



Rogers Stadium, Bellefonte, PA

JUNE 25, 2004

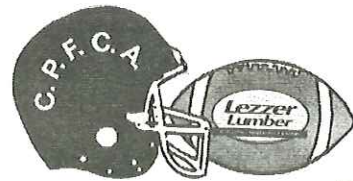
7:00 p.m.

# CLASSIC XX

CENTRAL PENNSYLVANIA  
FOOTBALL COACHES  
ASSOCIATION

CO-SPONSORED BY

Your Life. Your Paper.  
**CENTRE  
DAILY TIMES**  
www.centredaily.com

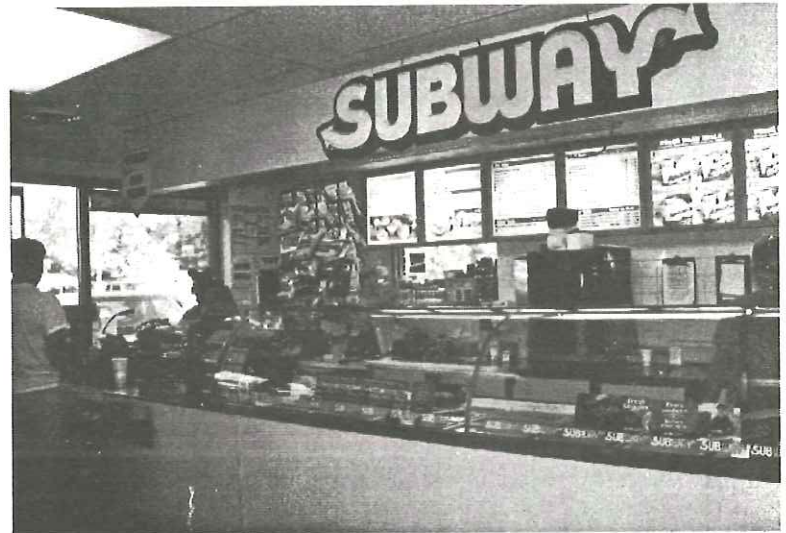


**NEWSRADIO**  
1390 AM 970 AM  
**WRSC~WBLF**  
Your News & Sports Leader in Lion Country!



Convenience Stores

Open 24 Hours Daily



**\*\* Fresh Pastries \*\* Fresh Bagels \*\* Subway Subs \*\***

**With Locations At:**

- |  |          |
|--|----------|
| • 1209 North Atherton Street * State College *     | 235-1970 |
| • Intersection of Rts. 350 and 220 in Bald Eagle * | 684-5240 |
| • Intersection of Rts. 45 and 144 in Centre Hall * | 364-9389 |
| • 219 Water Street * Bellefonte *                  | 357-7953 |
| • 604 N. Front Street * Philipsburg *              | 342-6533 |
| • Exit 120 I-80 * Clearfield *                     | 762-8191 |
| • 535 University Drive * State College *           | 231-8808 |

# LEZZER LUMBER CLASSIC 2004

## Table of Contents

Snappy s Ad	Inside Cover	West Branch Booster Club Ad	12	South Coaches	26	Claysburg-Kimmel Booster Club Ad	38
President s Message	1	Brookville Booster Club Ad	13	South Squad Player Photos	27	Jim s Sporting Goods Ad	38
2004 Hall of Fame Inductees	1	Pennsylvania Football News Ad	13	South Squad Player Photos	28	Big 33 Ad	39
State College Area Booster Club Ads	2	1994 North Team Photo, Bus. Cards	14	South Squad Player Photos	29	WRSC/WBLF Ad	40
MVP s and Classic Summaries	3	1994 South Team Photo, Bus. Cards	15	South Squad Player Photos	30	National Football Foundation Ad	41
2003 Centre Daily Times Classic write-up	4	Glendale Booster Club Ad	16	South Squad Player Photos	31	Indian Valley Booster Club Ad	42
Bellefonte Football Ad	5	Punxsutawney Booster Club Ad	16	Huntingdon Booster Club Ad	32	Lewistown Booster Club Ad	42
Curwensville Booster Club Ad	5	Special Thanks	16	Where are They Now? 1994 Profiles	33	Southern Huntingdon Booster Club Ad	42
Player Selection Procedure	6	University Orthopedics Ad	17	CPFCA Hall of Fame	33	Classic Scholarship Winners & 2001 Winners	43
2003 Lezzer Classic Pictures	6	North Coaches	18	Central Booster Club Ad	34	Previous Coaching Staffs	44
All-Star History	7	North Squad Player Photos	19	Altoona Big A Booster Club Ad	34	Gold & Silver Creations Ad	45
Philipsburg-Osceola Booster Clubs Ad	7	North Squad Player Photos	20	Drayer Physical Therapy Inst. Ad	35	Centre Daily Times Ad	46
Penns Valley Booster Club Ad	8	North Squad Player Photos	21	Bellwood-Antis Booster Club Ad	36	Game Records, Business Card	47
Clearfield Booster Clubs Ad	9	North Squad Player Photos	22	Williamsburg Booster Club Ad	36	Hollidaysburg Booster Club Ad	48
Moshannon Valley Booster Club Ad	9	North Squad Player Photos	23	Bishop Guilfoyle Booster Club Ad	36	District Champs	Inside Back Cover
Financial Statement & Patrons	10	North Squad Roster	24	Tyrone Booster Club Ad	37	Lezzer Lumber Ad	Back Cover
Central Mountain Booster Club Ad	11	South Squad Roster	25	Game Rules	38		

## PRESIDENT S MESSAGE

A heartfelt welcome to all fans, parents, coaches, players, friends, cheerleaders and all others associated with the 20th annual Lezzer Lumber Football Classic. Tonight s Classic is expected to be a hard-hitting and exciting contest.

The CPFCA and the Lezzer Lumber Football Classic combines the talents of some of the finest student athletes in Central Pennsylvania. This marks the final time that these young men will represent their high schools, coaches, families and communities. Tonight will be the last opportunity for many of these players to dawn a high school football uniform. For others, it will begin a new chapter to their college football careers. May we take time tonight to praise these young men for their discipline, dedication, and determination for successfully competing in this great game of football.

Tonight s event would not be possible without the never-ending support and generosity of the many sponsors listed in the program, most notably our good friends at Lezzer Lumber. Our sponsors truly have the best interests of our youth in mind. Also, tonight s game would not be possible without the endless hours of preparation and organization of Jack Bailey and Rob Irwin. Thanks Guys!

Lezzer Lumber and the CPFCA are proud to present tonight s football game. Sit back and thoroughly enjoy what will certainly be an interesting and entertaining evening of Central Pennsylvania high school football.

Always Hustle,  
Ron Walters  
2003-04 CPFCA President  
Head Football Coach, Penn Cambria High School

### 2003-04 CPFCA OFFICERS

**President** - Ron Walters, Penn Camberia  
**Vice-President** - Chris Dworek, Brookville  
**Secretary/Treasurer** - Rob Irwin, Bellefonte Area  
**Game Director** - Jack Bailey, Philipsburg-Osceola

## CENTRAL PENNSYLVANIA COACHES ASSOCIATION 2004 COACHES HALL OF FAME INDUCTEES

### DISTINGUISHED COACHES FROM CPFCA SCHOOLS BEING INDUCTED TONIGHT

#### Jack Krider, Central High School

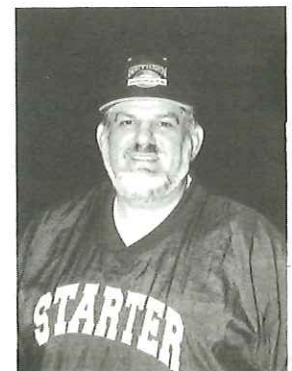
Retiring from coaching after twenty-five years. Head Coach at Claysburg-Kimmel before serving as Head Coach at Central for eighteen years. His Red Dragons teams entered D-6 playoffs seven times, finished as runner-up three years and winning the 1990 championship. His 1993 team won the 1993 Big Eight title, Jack has served as Head Coach for the South in 1991 and 2004 and assistant in 1986-87-93 and 1995.

#### Frank Baker, Southern Huntingdon

Veteran of thirty-one years of scholastic Football. Served as assistant coach and then Head Coach for eighth years at Southern. His Rockets entered the D-6 playoffs three times and won InterCounty Conference Titles in 1998 and 1999, and the Western Conference in 1998. He served as South assistant coach in the 1997, 1998, and 2001 Classics. He currently is an assistant coach at Huntingdon.



**Jack Krider**  
Central



**Frank Baker**  
Southern  
Huntingdon

**The State College Football Booster Club  
Congratulates**



**#86 Nate Chyle**



**#10 Matt Homan**



**#6 Scott Koch**



**#67 Mickey Rehring**



**#13 Kevin Suhey**

**on their selection to the  
Lezzer Lumber Classic and wishes  
them the best of luck in the future.**

---

**BEST WISHES  
COACH DAVE LINTAL**



**THANKS FOR YOUR SACRIFICE & COMMITMENT**

**FROM:  
YOUR COACHING STAFF & TRAINERS  
YOUR PLAYERS & MANAGERS  
PARENTS  
SCAHS FOOTBALL BOOSTER CLUB**

# Mid-State, Uni-Mart, and Lezzer Lumber Classic Summaries

## Most Valuable Performance

Year	Score	Offense	Defense
1985	South 14	Joe Irwin	George Zlupko
	North 13	Bishop Guilfoyle Keith Powell Philipsburg-Osceola	Altoona Bill Andrus Bellevonte Area
1986	North 29	Bill Hesketh	Bob Shea
	South 20	Kishacoquillas John Carey Bishop Guilfoyle	Curwensville Craig Sellers Huntingdon
1987	South 23	Rick Hoover	Cord Ferrari
	North 21	Altoona Doug Sieg Bellevonte Area	Huntingdon Tom Bowser State College
1988	South 28	Matt Koehle	Mike Cheslock
	North 13	Bishop Guilfoyle Tim Fritz Lock Haven	Altoona Brent Dunmire Lewistown
1989	North 12	Jim Renninger	Bob Oakes
	South 3	Bald Eagle Nittany Dave Hensor Juniata Valley	State College Mike Koehle Bishop Guilfoyle
1990	North 31	Bruce Graham	Todd Hardy
	South 22	Clearfield Dave Wyland Hollidaysburg	Bellevonte Area Lew Buddy Tress Mount Union
1991	South 7	Chris McCartney	Eric Bernatsky
	North 3	Bellwood-Antis Wade Kurzinger Bald Eagle Area	Purchase Line Bill Stringfellow Bald Eagle Nittany
1992	North 7	Don Gentzyl	Brian Carper
	South 6	Bucktail Matt Kemmerer Punxsutawney	Penns Valley Karl Montanaro Bellwood-Antis Brett Rankin Punxsutawney
1993	South 15	Ferdie Vaughn	Norm Huddy
	North 5	Mount Union Jeff Nixon State College	Punxsutawney Shanon Manning Penns Valley
1994	South 18	Tom Snyder	Dave Berkhimer
	North 7	Mount Union Brandon Knarr Lock Haven	Claysburg-Kimmel Joe Frank Philipsburg-Osceola

## Most Valuable Performance

Year	Score	Offense	Defense
1995	North 39	Chad Kroell	Scott Latosky
	South 26	Clearfield Wes Green Huntingdon	Moshannon Valley Jason Showwalter Juniata Valley
1996	South 23	Ryan Hostler	Jason Evans
	North 21	Bellwood-Antis Tim Kail DuBois	Huntingdon Mike Kemmerer Bald Eagle Nittany
1997	North 20	Eric Kaufman	Justin Ditty
	South 8	Clearfield J.J. Easter Mount Union	Bucktail Jonathan Seiner Tyrone
1998	North 21	Larry Johnson	Matt Maggs
	South 7	State College Josh Geis Altoona	Bald Eagle Nittany Mathias Harmon Central
1999	North 34	Josh Tkacik	Ben Lago
	South 18	Curwensville Chad Brindle Huntingdon	Bald Eagle Area Matt Deamer Indian Valley
2000	North 20	Justin Marshall	Jon Condo
	South 6	DuBois Kris Fideli Altoona	Philipsburg-Osceola David Pisanick Hollidaysburg
2001	South 34	Jesse Jones	Alex Dimoff
	North 10	Tyrone Philip Mann Central Mt.	Mt. Union Matt Harnish Curwensville
2002	South 34	Wes Krider	Dylan Crilly
	North 19	Central Jon Pribble Central Mt.	Hollidaysburg Lance Thompson Moshannon Valley
2003	South 17	Brendan Perretta	Matt Davis
	North 14	Altoona Dave Richards Clearfield	Hollidaysburg Jon Altemus Clearfield

## WE RE PROUD OF YOU



**PENNSYLVANIA  
NETWORKS, Inc.**

**Douglas M. Doyle**  
Director of Operations

P.O. Box 219  
Shade Gap, PA 17255

ddoyle@pennsylvanianetworks.com

814-259-3999  
Fax: 814-259-3979  
Cell: 814-251-1117



**L. Woods**  
Photography

415 Montgomery Street  
Hollidaysburg, Pa. 16648

PHONE (814) 695-5601 LOREN WOODS, OWNER

# Last-ditch effort

South 17

North 14

## South wins Lezzer Lumber Classic as Perretta hauls in last-minute TD

Centre Daily Times

By Jeff Rice

Tyrone — Brendan Perretta caught a 36-yard touchdown pass with 36 seconds left Saturday night to give the South a 17-14 win over the North in the Lezzer Lumber Football Classic before a full house at Gray Veterans Memorial Field.

Perretta, an all-state wide receiver at Altoona who will play in the Big 33 game next month and attend Penn State this fall, hauled in his second touchdown of the night from former Altoona teammate Joey Kleiner to give the South its third straight win in the series.

You can tell why he was invited to walk-on at Penn State, South coach Tom Irwin said of Perretta. It was a well-played game. It looked like last team with the ball was going to win.

Perretta who finished with four catches for 127 yards, earned offensive most valuable player honors for the South. His 52-yard touchdown catch with 45 seconds left in the first half tied the game at 7-7.

Hollidaysburg's Matt Davis was the South's Defensive MVP.

Clearfield's Dave Richards, another Big 33 player, was the North offensive MVP with 106 yards and a touchdown on 10 carries. Clearfield lineman Jon Altemus was the North defensive MVP.

State College's Curt Varner finished with 47 yards on 10 carries.

On Perretta's game-winning catch, State College's Jason Ganter rotated over from his safety position but the ball sailed just past his reach. I thought Ganter was going to tip it. I thought it was a tipped ball and that was it, said North assistant coach Jeff Vroman. Our kids never quit. It was just a matter of who had the ball last with the clock.

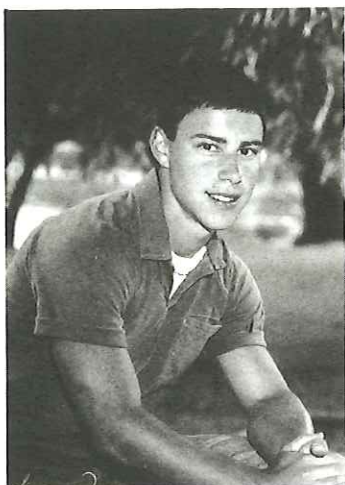
Punxsutawney's Joe Martin connected with Central Mountain's Justin Wilson on a 13-yard slant with 13:32 left in the second quarter to give the North a 7-0 lead. Wilson had five catches for 86 yards.

Bishop Guilfoyle's Tom Forr kicked a 43-yard field goal with 12:47 left in the third quarter, giving the South a 10-7 lead.

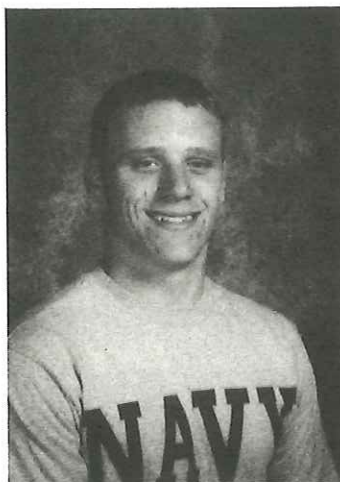
Richards put the North back on top when he scored on a 44-yard run early in the fourth.



The Bellefonte Coaching Staff  
and  
The Red Raider TEAM  
Congratulates



#44 Tony Torsell



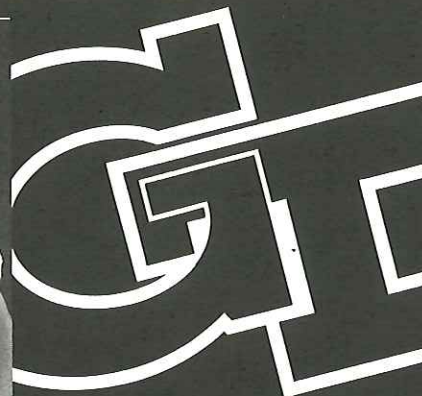
#32 Bill Waugh

for being selected to participate in the Lezzer Lumber Classic  
**TAKE EM TO THE WOODSHED!**

*Congratulations*  
**CURWENSVILLE  
GOLDEN TIDE**



GREG GILBERT



GARY KEPHART

from the  
Curwensville Golden Tide  
Football Booster Club

# PLAYER AND COACHES SELECTION

Players and coaches are selected for the game by members of the Central Pennsylvania Football Coaches Association. They require that a representative attend a minimum of three CPFCA meetings before a player is eligible. Players from schools failing to meet the minimum participation requirements are not eligible for the following year.

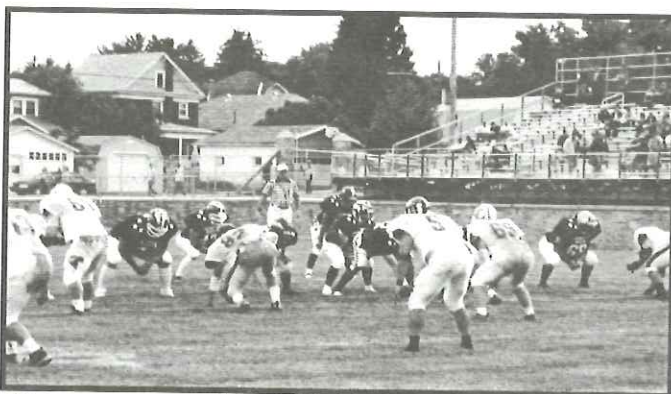
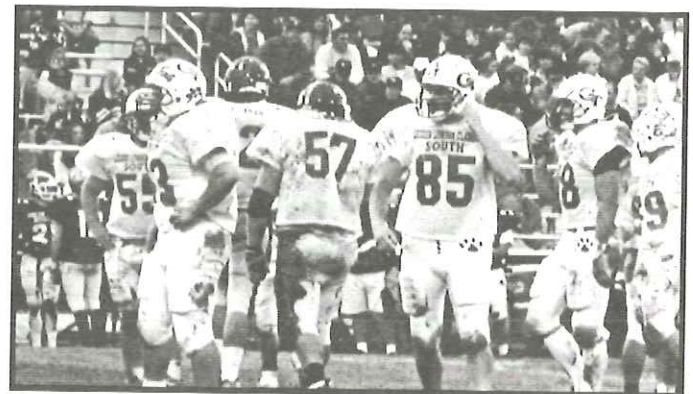
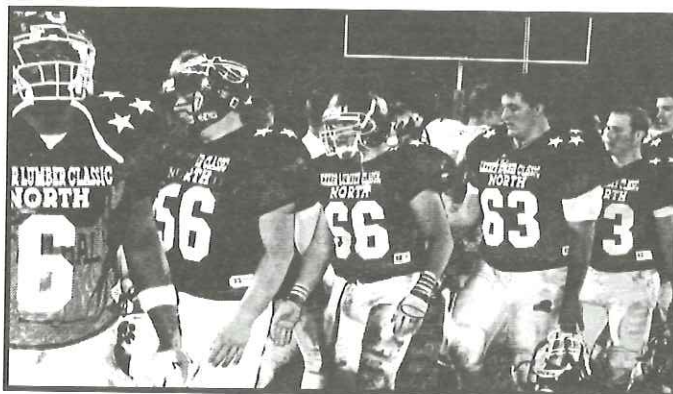
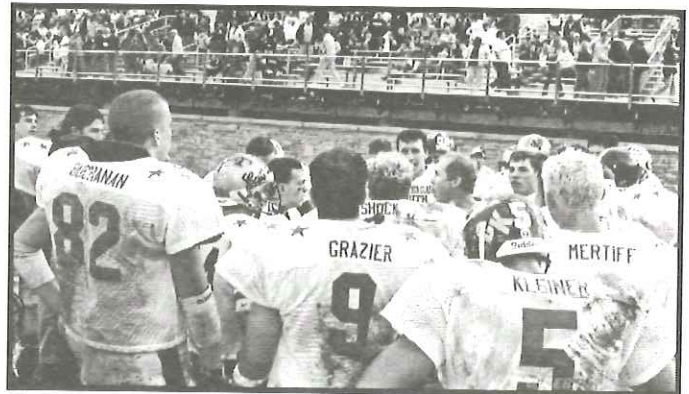
## Player Selection:

1. Graduating Senior players are nominated in writing by their head coach in December.
  - a. Each school may have no more than five players participate.
2. Players nominated are polled to ascertain that they will participate if selected.
3. Coaches from schools in each division review the nominated players and the forty players are selected by a consensus of the selection committees. (A player from each eligible school will be selected to participate in the game.)

## Coach Selection:

1. Members of the association select the coaching staff from member schools in each division -- North and South.
2. The coaching staffs for each division consist of a Head Coach and five Associate Coaches.

## Pictures from 2003 Lezzer Lumber Classic





# A Classic History

Previous Central Pennsylvania All-Star Football games such as the 1960 Central Counties and the 1977-78 Lewistown Lion Club were great football games, but were short lived.

In 1985, the Central Pennsylvania Football Coaches Association, with J. Gawen Stoker as the Game Director, initiated the Mid-State Classic under the corporate sponsorship of the Mid-State Bank. The game was established to promote scholastic football, to recognize excellence of our players and coaches, to provide a system of ongoing football education for our coaching staffs, and to fund a scholarship program. The first game involved players from twenty-five schools. Uni-Mart replaced Mid-State Bank as the game sponsor in 1993. Since 1996, Jack Bailey and Rob Irwin have served as Co-Game Directors for the Classic.

In 1998, the Lezzer Lumber Company became the major sponsor for the Classic with the CPFCA maintaining the football and organizational aspects of the game. We are proud to continue our association with the Lezzer Lumber as the corporate sponsor. Currently, there are thirty schools from District III, VI and IX involved in the game. To date, \$65,000 in the form of 130 scholarships have been awarded to help young people continue their education. The CPFCA holds monthly mini-clinics for high school and youth coaches during the winter months. To the players and coaches, being selected to participate in the Classic is held in high regard. It would seem that the goals for the Classic are being realized. The degree to which the game and the CPFCA can work toward these goals will depend upon the support we continue to receive.

The Lezzer Lumber Classic is considered as one of the premiere all-star football games in Pennsylvania. It is a tribute to our sponsors and co-sponsors, to the individual players sponsors, the business card and patron sponsors, and to families and friends of scholastic football in the Central Pennsylvania region. Please patronize our supporters, and let them know that you appreciate their contributions to the Classic when you visit their businesses.

**YOU MAKE IT ALL WORK!**

---

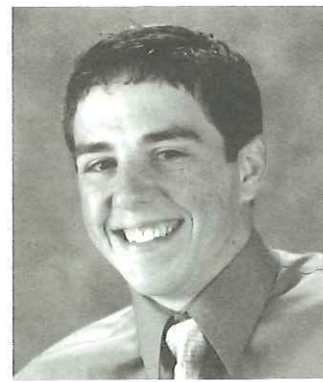
## WE RE MOUNTIE PROUD OF



**#4 Stan Koguc**



**#20 Ryan Dobo**



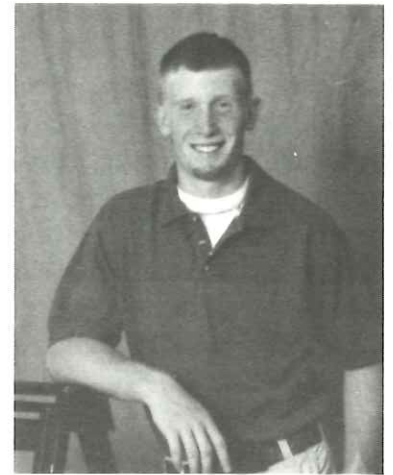
**#2 Adam White**

**Wishing continued success for the  
LEZZER LUMBER CLASSIC  
and Good Luck to the 04 MOUNTIES  
Compliments of the  
Philipsburg-Osceola Quarterback Club**

# The Penns Valley Athletic Booster Club Congratulates



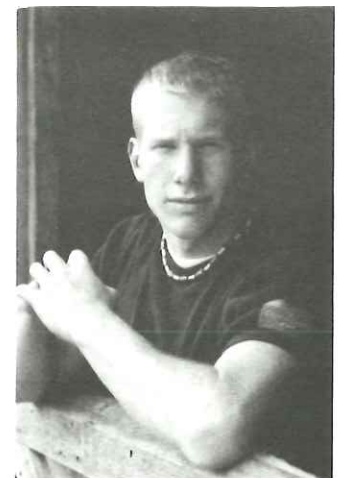
**#63 Josh Belcher**



**#14 Todd Bumgardner**



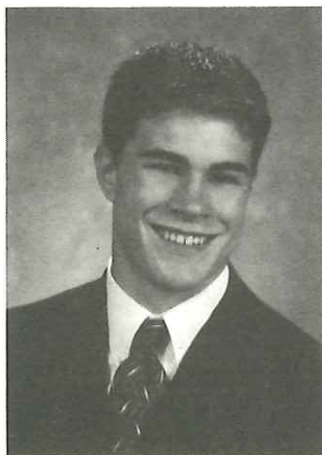
**#54 Douglas Leitch**



**#22 Curt Royer**

**On their selection to the  
Lezzer Lumber Football Classic,  
and wishes them good luck in the future.**

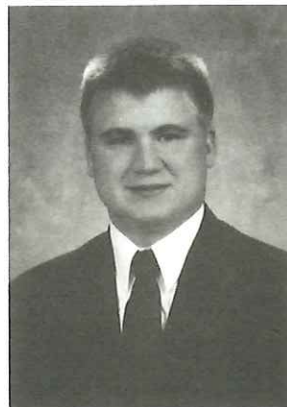
# The Clearfield Bison Quarterback Club Extends their best wishes to:



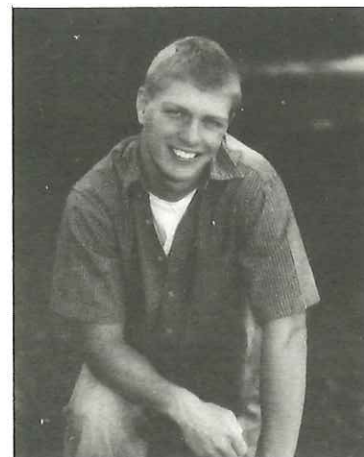
#81 Andrew Crotzer



#61 Ryan Graham



#73 Kurt Meckey



#24 Nathan Shadeck

---

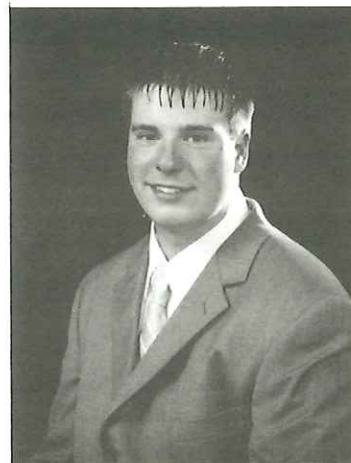
## MOSHANNON VALLEY KNIGHT BOOSTER CLUB and LADIES BOOSTER



#36 Larry Hayward



#88 Steve Holencik



#53 Gerald Hopkins

**Best of Luck in your future**

## CLASSICAL FINANCIAL STATEMENT

How are the funds raised?  
Where does the money go?

The Central Pennsylvania Football Coaches Association (CPFCA) is recognized as a non-profit organization. The CPFCA has been the administrative organization promoting and conducting the Classic over the past seventeen years. Annually the receipts and expenditures for the operation of the game are in the \$25,000 to \$30,000 range.

There are three avenues of revenue for the Classic -- 1) individual player sponsors provide for the one-third of the funds, 2) Game Sponsor and Co-Sponsors contributions equate to one-fourth of the revenue, and 3) the promotional component, including advertisers, business card and patron sponsors, sale of promotional items such as hats, T-shirts, and game program, video, and ticket sales constitutes the remainder of the revenues.

On the expenditure side, player expenses including game jerseys, practice meals, player commemorative awards, insurance coverage, and scholarship awards account for forty percent of the costs. An additional forty percent of the expenses are related to field rental, game site personnel, purchase of promotional items, and game program printing costs. The rest of the expenses are associated with coaching expenses, promotional fees, and administrative costs.

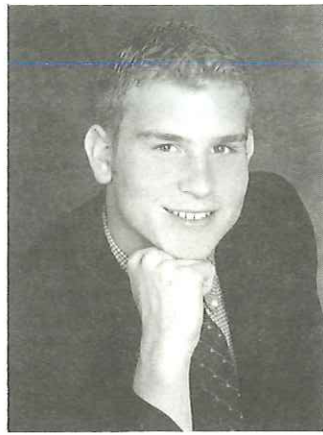
Basically, the game is a result of efforts of individuals from the thirty school comprising the Central Pennsylvania region working for continued success of the Lezzer Lumber Classic.

## 2004 PATRONS

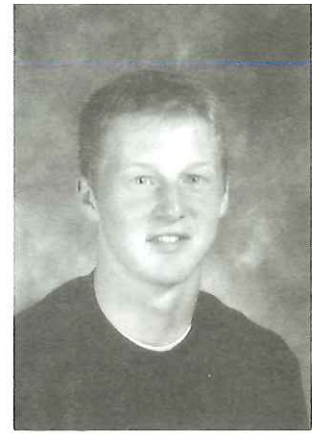
Richard & Abby Snyder  
Ed, Jill & Alicia Leitch  
Jerry & Kim Dyer  
David & Karen Piotrowski  
Dr. & Mrs. Wm. J. Kirsch  
Lester & Joyce Pittman  
Mike & Tina Plummer  
William & Norita Chyle  
A. Brady Appleman  
Barry M. England VMD  
James R. Becker  
Denny & Nancy Trexler  
Albert Petucci  
Paul & Jean Kozak  
Joe Stanowski VAQ142  
Ray & Gail Tipprtt  
Tim & Lori Gildea  
The Piper Family  
Gary & Millie Hopkins  
Terry Hawn Family  
Tom & Monica Rehring  
Joe & Delorse Homan  
James R. Becker  
Art & Donna Waleski  
Dennis & Rita Crotzer  
Doug & Kay Royer  
Jack & Carla Bailey  
Ron & Karen Davis  
Clair & Shelia Rockey  
Victor & Laura Costlow  
Wendell & Jennifer Doyle & Sons  
Homemade Memories . . . Bakery  
First Baptist Church, Brookville  
Larry & Pat Koch  
Jim, Nancy, & Ashley Becker  
Tim & Mary Lynne Meckey  
Scott & Cindy Laing & Family  
Jim, Patty, Jim II, & Joe Luther  
JP, Susan, Joe (97 Classic),  
Brian (99 Classic), Steve (04 Classic)  
Rob, Bethany, Kate, Kristin,  
Robbie, Chris, Patrick & Kyla Irwin  
Leslie Stanowski / Lynne Fisher / Ben Greenfield  
Good Luck #58 (Jerm), Mom, Joe, Ben & Gram  
Robbie, Cheryl, Robbie & Lindsay Gould



#72 Tyler Fida



#9 Chris Gould



#7 Sean Hanna



#75 Bryant Packer



#19 Stephen Pribble

Congratulations and Best Wishes from the  
Central Mountain Wildcats Football Booster Club

# West Branch Warriors

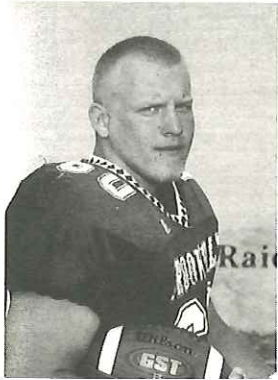
Congratulations & Good Luck!



Football Club  
2003-2004



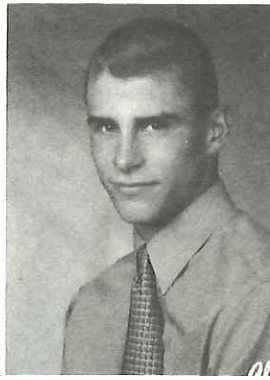
**THE BROOKVILLE RAIDER BOOSTER CLUB  
 WOULD LIKE TO EXTEND THEIR CONGRATULATIONS TO THE  
 BROOKVILLE PLAYERS FOR BEING SELECTED TO PARTICIPATE  
 IN THE  
 2004 LEZZER LUMBER CLASSIC**



**#60 Mark  
Kaczmarczyk**



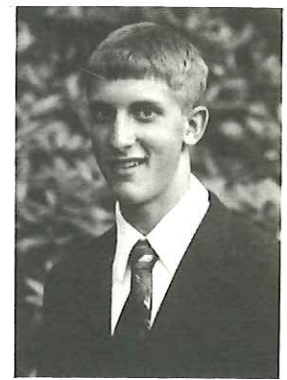
**#68 Tony  
Morres**



**#3 Cliff Park**



**#76 Geoff  
Peterson**



**#5 Brent Puller**

**G.O.O.D L.U.C.K**

## Pennsylvania Football News

PO Box 334 Revloc, PA 15948

Rich Vetock - Publisher -- Tom Elling - Editor

Subscription Rates

**18 Issues.....\$38.00**

Don't miss a single issue!

Read about:

what teams are hot... the weekly top stat stats... up-close-and personal profiles of top players... Notes from every PIAA District and the Philly Leagues... Scores of all games every week... Rankings- both computerized and by our rankings man Rich Vetock...

If you're a real Pennsylvania High School Football Fan...  
 PFN is a must for your reading list.



Former PA star **Steve Breaston** (Woodland Hills) with his buddy at the Big 33 Game

We mail first class, weekly so you have your paper before the next games are played.

**Subscribe to Pennsylvania Football News tonight!  
 Make check payable to PFN and mail to address above.**

Name: \_\_\_\_\_

Address: \_\_\_\_\_

City: \_\_\_\_\_ State: \_\_\_\_\_ Zip: \_\_\_\_\_

# 2004 Classic Roster--North



3 Eric Wagner	State College	33 Mike Saar	Jersey Shore	65 Mac Wright	State College
4 Mike Watson	Bellefonte	35 Steven Tekely	West Branch	66 Chris Anderson	Moshannon Valley
7 Ryan Andrews	Glendale	38 Toby Miller	State College	69 Eric Witherite	DuBois
9 Brian Passmore	DuBois	40 Todd Beers	DuBois	70 Mike Evans	West Branch
10 Scott Irwin	Curwensville	42 Robert Getz, Jr.	Bucktail	76 Tim Conway	Lock Haven
11 Mark Emigh	West Branch	43 Steven Bressler	Curwensville	77 Andy Young	Clearfield
14 John Yecina	Bald Eagle Area	44 James Godown	Moshannon Valley	84 Shawn Sampsell	Bald Eagle Nittany
15 Mike Stitzer	Penns Valley	45 Joe Gummo	Bald Eagle Area	86 Mike Miller	Bellefonte
16 Bryan McGarvey	Glendale	46 Joe Korney	DuBois		
20 Jeff Smalley	Lock Haven	47 Mike Norris	Clearfield	Head Coach	Herm Wertz, DuBois
21 BJ Graham	Clearfield	51 Joel Mack	Clearfield	Asst. Coaches	Tim Janocko, Clearfield
24 Dustin Eck	Jersey Shore	54 Denis Greendoner	Lock Haven		Rod Smith, DuBois
25 Jeff White	Bald Eagle Area	55 Jason Haines	Bald Eagle Nittany		Jeff Vizza, DuBois
26 Brandon Knarr	Lock Haven	56 Joshua Stauffer	Bald Eagle Area		Mike Weber, DuBois
30 Thom Henery	DuBois	58 George Summerson	Lock Haven		
31 Chris Achuff	Bellefonte	59 Joe Frank	Philipsburg-Osceola		
32 Mitch Rossman	Penns Valley	64 Jason Meyer	Bald Eagle Nittany		



110 Mt. Joy Road  
Clearfield, PA 16830  
(814) 765-4080  
FAX (814) 768-7802

*Major & Minor Collision Repair  
Free Estimates  
PA State Inspection*

**MOYER'S AUTO BODY**

**KEPHARTS**  
Home Improvements




**Fully Insured**  
The quality job at the price you deserve!

Free estimates  
814-378-7228    814-592-8413

**Kips Testing Service Inc.**  
*Commercial Drivers Licensing Testing*

**Your Truck or Ours**  
*Curwensville-Kittanning-Altoona*

(814) 236-1342 Curwensville (Main Office)  
(888) 209-5422 toll free  
(814) 940-1662 Altoona  
kipsinc@charter.net  
Class A, B, C, Passenger





**FOR ALL YOUR MASONRY NEEDS**  
*- Fully Insured -*

**JOSEPH GRAHAM MASONRY**  
*Snow Plowing & Removal / Skid Steer Service*

203 Als Road  
Woodland, PA 16881

(814) 857-7807  
Cell: (814) 592-5080



# 2004 Classic Roster--South



1 DJ Sentman	Mount Union	50 John Walter	Claysburg-Kimmel	83 Tom Snyder	Mount Union
4 Scott Noerr	Punxsutawney	51 Eric McMahon	Juniata Valley	84 Darren Finkle	Huntingdon
5 Bruce Walker	Huntingdon	52 Pete Metzgar	Central	88 Bob Penepacker	Lewistown
10 Brian Eckert	Lewistown	55 Eric Crosson	Indian Valley	89 Corey Wertz	Mount Union
11 AJ Hoenstine	Central	60 Rich Lampenfeld	Bishop Guilfoyle	99 Peter Stetter	Bellwood-Antis
16 Dave Berkheimer	Claysburg-Kimmel	61 Travis Woodward	Huntingdon		
18 Mike Crago	Altoona	62 Matt Cherry	Tyrone		
21 Bret Geishauser	Bishop Guilfoyle	68 Jeff Colbert	Central	Head Coach	Alan Hartman, Mt. Union
22 Duane Walter	Claysburg-Kimmel	72 Joe Danish	Mount Union	Asst. Coaches	Dave Baker, Williamsburg
25 David L. Jones	Altoona	73 JD Sheesley IV	Juniata Valley		Mark Connor, Lewistown
34 Cahd Zembower	Claysburg-Kimmel	75 Don Chille	Bellwood-Antis		Dave Hummel, Mt. Union
37 Darrell Wise	Lewistown	76 Matt Strong	Bellwood-Antis		Bob Shinskie, Lewistown
40 Shawn Ross	Bellwood-Antis	77 Shawn Fickes	Claysburg-Kimmel		Rick Wilson, Mt. Union
42 Joe Grassi	Holidaysburg	78 Kenneth G. Smith	Holidaysburg		
43 Brandon Fellingner	Bishop Guilfoyle	79 Chris Scalia	Huntingdon		
44 Brent Rhodes	Central	82 Craig Weston	Lewistown		

 **FOREST DIESEL, INC.**  
ENGINE & COMPONENT REBUILDING FIELD SERVICE  
CUMMINS DEALER - PARTS & SERVICE

Shop: (814) 378-8016  
Fax: (814) 378-8158  
Bob Jones (814) 592-3332  
 Scott Jones: Military  
Larry Hayward: (814) 553-1769

P.O. Box 284,  
339 Durbin St.  
Ramey, PA 16671

MARY JANE HORTON, DC

**HORTON**  
CHIROPRACTIC OFFICE

128 DOE RUN RD  
MANHEIM, PA 17545 717-664-3334

 **JOE LUTHER'S LANDSCAPING**  
RESIDENTIAL  
LANDSCAPE DESIGN  
Plant installation  
pruning and shaping  
mulching, edging,  
lawn maintenance  
  
JOE LUTHER  
Penn State Educated  
544 Fiske Road  
Fallentimber, PA 16639  
PHONE (814) 687-3507

*Quality and Satisfaction is Our Motto*

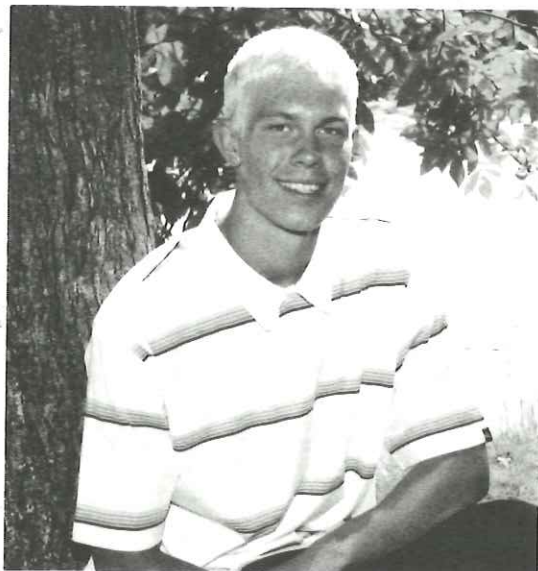
**H.V. CAMBERG SERVICES INC.**

Used Car Sales, Auto Repair,  
and Special Needs Transportation  
Route 729, Ansonville

814-672-3653 DAILY 9-4  
EVES: DAVE 672-3601  
OR HOWIE 378-5694

11368 Tyrone Pike  
Irvington, PA 16656

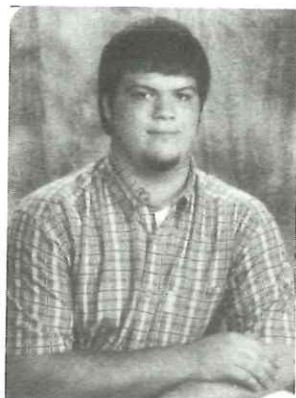
# The Glendale Viking Quarterback Club Congratulates



**#8 Scott Laing**  
on his selection to the Lezzer Lumber Classic.  
Best Wishes and Good Luck in the future.

## Punxsutawney First and Ten Club

Congratulates . . .



**#65 Neil Miller**



**#1 Andy Snyder**

. . . and wishes  
them the best of  
luck in their future.

## Special Thanks to These and Others Who Give Special Help

The Boards of Education, Administration, Facilities Maintenance, and  
Coaching Staffs at Bellefonte Area, State College and Tyrone Area

Greg Daughenbaugh -- Professional Video Services

Lezzer Lumber and Building Materials Centers

Larry Suhey, Balfour Co. -- Awards

WRCS Radio/Video Play-by-Play

Grove Printing -- Bellefonte

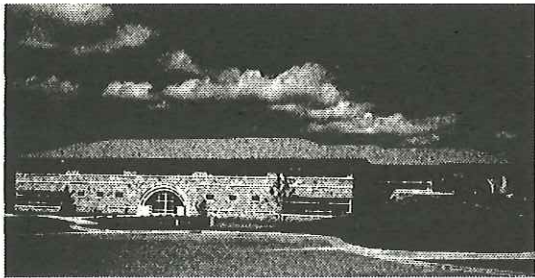
### Today's Referee Crew

Referee	Dick Neese	Side Judge	Barry Abbott
Umpire	Terry Fustine	Line Judge	Tino Geneviro
Linesman	Larry Adams	Back Judge	Don Walters
Field Judge	Kevin Doverspike		

# Making a Difference in the Community



The physicians and staff of University Orthopedics Center are proud to sponsor the Lezzer Lumber Football Classic. It is part of our



ongoing commitment to support student athlete recognition, teamwork and performance excellence.

Whether it's promoting athletic activity or delivering quality medical care, UOC is working to make a difference in the health of our community.

---

Dr. David M. Joyner, Dr. Thomas J. Ellis, Dr. Paul V. Suhey, Dr. Kenneth L. Cherry,  
Dr. Douglas E. R. Roeshot, Dr. Edwin J. Rogusky, and Dr. James S. Martin



101 Regent Court, State College, PA 16801 (814) 231-2101  
2525 9th Avenue, Suite 2B, Altoona, PA 16601 (814) 949-4050  
12 N. Dorcus Street, Lewistown, PA 17044 (717) 242-1522

**800-505-2101**

Participating with most major insurance companies

# NORTH SCHOOLS

# O

BALD EAGLE AREA

BELLEFONTE

BROOKVILLE

# R

CENTRAL MOUNTAIN

CLEARFIELD

CURWENSVILLE

DUBOIS

# T

EAST JUNIATA

GLENDALE

MOSHANNON VALLEY

PENNS VALLEY

# H

PHILIPSBURG-OSCEOLA

PUNXSUTWANEY

STATE COLLEGE AREA

WEST BRANCH

**Dave Lintal**  
State College Area  
Head Coach



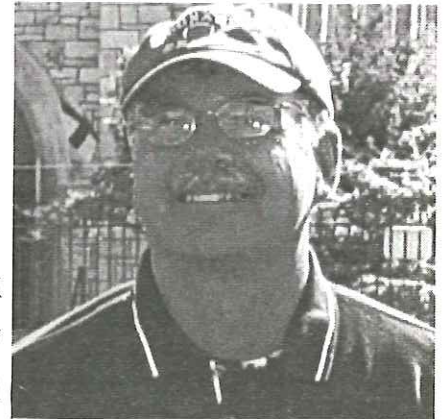
**Mark Baney**  
State College Area  
Asst. Coach



**John Cryder**  
State College Area  
Asst. Coach



**Mark Kirk**  
Punxsutwaney  
Asst. Coach



# S

# Q

# U

# A

# D

**Tom Sallade**  
State College Area  
Asst. Coach

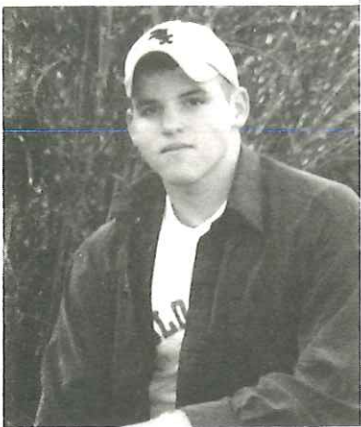


**Mike Snyder**  
State College Area  
Asst. Coach



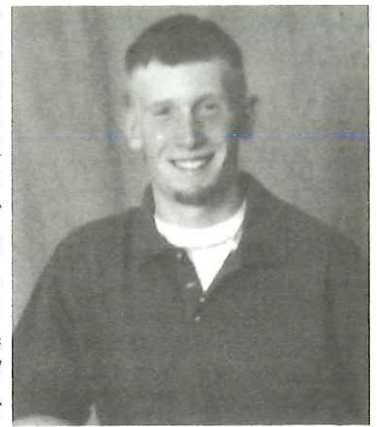
**Steve Turchetta**  
Central Mt.  
Asst. Coach





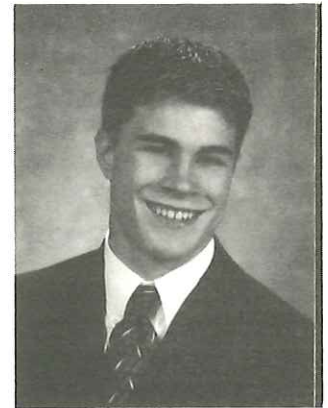
**#63 Josh Belcher**  
 Ht. 6 2" Wt. 235  
 Off. OL Def. DE  
 Penns Valley High School  
 Hometown: Spring Mills  
 Parents/Guardians:  
 Tim & Sharon Belcher  
 Sponsor:  
 Distance Learning Network  
 Future Plans:  
 Field: Criminology/Pre-Law

**#14 Todd Bumgardner**  
 Ht. 6' Wt. 200  
 Off. QB Def. LB  
 Penns Valley High School  
 Hometown: Lewistown  
 Parents/Guardians:  
 Kathy L. Bumgardner  
 Sponsor:  
 The Auto Glass Centre, Inc.  
 Future Plans:  
 Westminster/Lycoming College  
 Field: Psychology/  
 Guidance Counselor



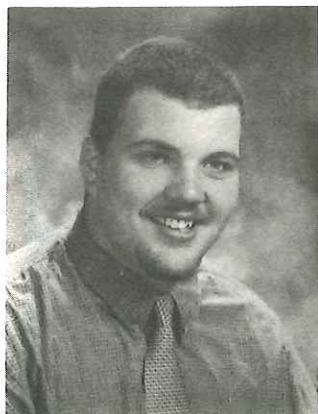
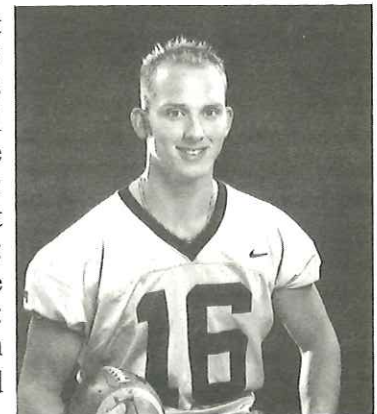
**#86 Nate Chyle**  
 Ht. 6 4" Wt. 215  
 Off. TE Def. DE  
 State College High School  
 Hometown: State College  
 Parents/Guardians:  
 William & Norita Chyle  
 Sponsor:  
 College Gardens Nursery  
 George s Trucking  
 Future Plans:  
 PSU/Delaware Valley  
 Field: Agricultural Sci.

**#81 Andrew Crotzer**  
 Ht. 5 11" Wt. 175  
 Off. WR Def. DB  
 Clearfield High School  
 Hometown: Clearfield  
 Parents/Guardians:  
 Dennis & Rita Crotzer  
 Sponsor:  
 Legends Sports Bar  
 Future Plans:  
 Edinboro University  
 Field: Undecided



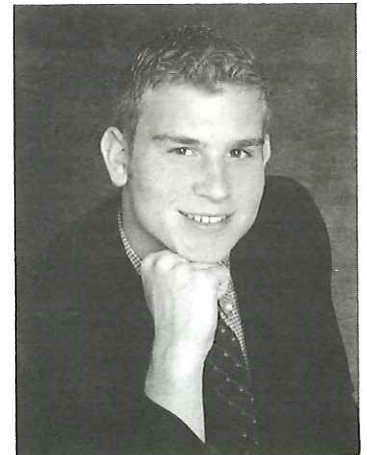
**#72 Tyler Fida**  
 Ht. 5 10" Wt. 230  
 Off. OL Def.  
 Central Mt High School  
 Hometown: Lock Haven  
 Parents/Guardians:  
 Dean & Cindy Fida  
 Sponsor:  
 Parents - Dean & Cindy Fida,  
 Grandparents - Dominic & Betty Fida,  
 Genevieve Lehmier, Judy Bloom  
 Future Plans: PSU  
 Field: Computer Science/MIS

**#16 Greg Gilbert**  
 Ht. 6 1" Wt. 195  
 Off. WR Def. DB  
 Curwensville High School  
 Hometown: Curwensville  
 Parents/Guardians:  
 Dave & Cheryl Gilbert  
 Sponsor:  
 Curwensville RHL/Smokehouse  
 Future Plans:  
 Univ of Utah  
 Field: Pre-Med



**#70 Bill Gomola**  
 Ht. 6 2" Wt. 290  
 Off. OL Def. DL  
 BEA High School  
 Hometown: Clarence  
 Parents/Guardians:  
 Joe & Paula Gomola  
 Sponsor:  
 G. W. Auto Collision  
 Future Plans:  
 Clarion University  
 Field:  
 Sports Administration

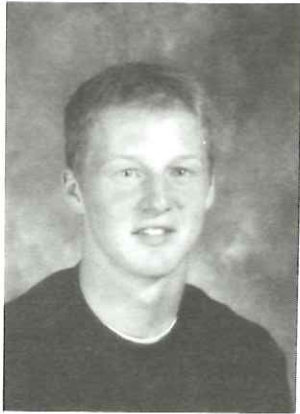
**#9 Chris Gould**  
 Ht. 6 1" Wt. 200  
 Off. P Def. K  
 Central Mt High School  
 Hometown: Lock Haven  
 Parents/Guardians:  
 Robert & Cheryl Gould  
 Sponsor:  
 M & R Contracting, Inc.  
 Future Plans:  
 University of Virginia  
 Field: Business





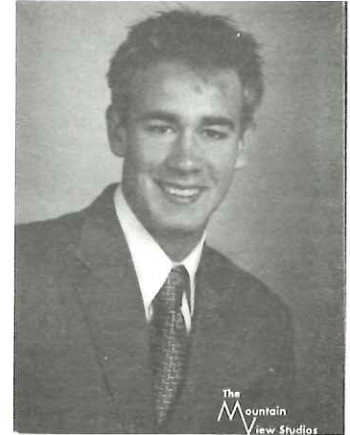
**#61 Ryan Graham**  
 Ht. 6 2" Wt. 283  
 Off. OL Def. DL  
 Clearfield High School  
 Hometown: Woodland  
 Parents/Guardians:  
 Joseph & Joann Graham  
 Sponsor:  
 Joseph Graham Masonry  
 Future Plans: UPJ  
 Field: Pre-Pharmacy

**#88 Steve Holencik**  
 Ht. 6 4" Wt. 225  
 Off. TE Def. DE/LB  
 Mo Valley High School  
 Hometown: Ramey  
 Parents/Guardians:  
 Thomas & Diane Holenick  
 Sponsor:  
 Ramey Garage, Buick Sales  
 Steve, Lisa, Tom, & Chris  
 Future Plans:  
 Field:  
 Business Management



**#7 Sean Hanna**  
 Ht. 6 4" Wt. 185  
 Off. QB Def.  
 Central Mt High School  
 Hometown: Lock Haven  
 Parents/Guardians:  
 JP & Susan Hanna  
 Sponsor:  
 Donald G. Walker Funeral Home, Inc.  
 Donald G. Walker, Supervisor  
 Moriarty-Dutcavich Funeral Home,  
 John V. Hanna, Sr. Supervisor  
 State Representative Mike Hanna  
 Future Plans: Lycoming College  
 Field: Second. Ed/Business

**#10 Matt Homan**  
 Ht. 5 11" Wt. 175  
 Off. WR Def. DB  
 State College High School  
 Hometown: Shingletown  
 Parents/Guardians:  
 Joe & Delorse Homan  
 Sponsor:  
 Wheeler's Small Engine  
 Future Plans: PSU  
 Field: Criminal Justice



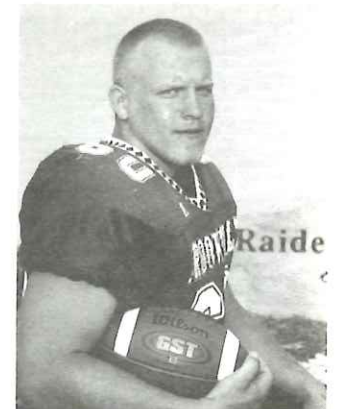
**#36 Larry Hayward**  
 Ht. 6 1" Wt. 210  
 Off. RB Def. LB  
 Mo Valley High School  
 Hometown: Madera  
 Parents/Guardians:  
 Larry & Marlene Hayward  
 Sponsor:  
 Looking Good Beauty Salon  
 Future Plans: Lock Haven  
 Field: Criminal Justice

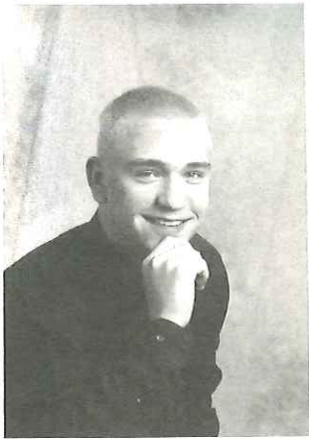
**#52 Gerald Hopkins**  
 Ht. 6 1" Wt. 250  
 Off. OL Def. DL  
 Mo Valley High School  
 Hometown: Houtzdale  
 Parents/Guardians:  
 Gerald & Millie Hopkins  
 Sponsor:  
 Fist Commonwealth  
 Future Plans: PSU  
 Field: Electrical Engineering



**#23 Jonathon Heverly**  
 Ht. 5 10" Wt. 175  
 Off. WR Def. DB  
 BEA High School  
 Hometown: Howard  
 Parents/Guardians:  
 Curt & Janice Heverly  
 Sponsor:  
 Ralph Spearly Contracting, Inc.  
 Future Plans: PSU Dubois  
 Field: Wildlife & Fisheries Science

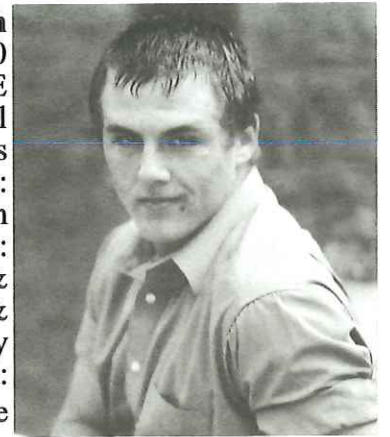
**#60 Mark Kaczmarczyk**  
 Ht. 5 11" Wt. 220  
 Off. OL Def. DL  
 Brookville High School  
 Hometown: Sigel  
 Parents/Guardians:  
 Ted Kaczmarczyk  
 Sponsor:  
 Brookville QB Club  
 Future Plans:  
 Undecided  
 Field:  
 Undecided





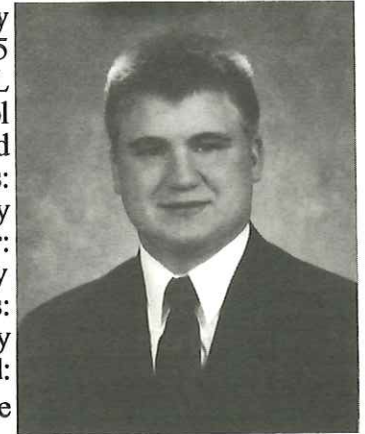
**#41 Gary Kephart**  
 Ht. 6' Wt. 214  
 Off. RB Def. LB  
 Curwensville High School  
 Hometown: Gampian  
 Parents/Guardians:  
 Pamela and Clay Wriglesworth  
 Sponsor:  
 Kips CDL Testing Service  
 Kepharts Home Improvements  
 Future Plans: Lock Haven  
 Field: Criminal Justice

**#54 Douglas Leitch**  
 Ht. 6 2" Wt. 210  
 Off. C Def. DE  
 Penns Valley High School  
 Hometown: Spring Mills  
 Parents/Guardians:  
 Ed & Jill Leitch  
 Sponsor:  
 Dr. Douglas Collins &  
 Dr. Harold Haney Oral &  
 Facial Surgery  
 Field:  
 Environmental Science



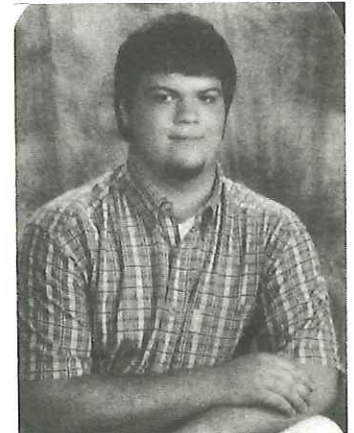
**#6 Scott Koch**  
 Ht. 5 8" Wt. 155  
 Off. RB Def. DB  
 State College High School  
 Hometown: State College  
 Parents/Guardians:  
 Pat & Larry Koch  
 Sponsor:  
 David W. Wigfield & Associates  
 Bob Metzger from Frost Conn, Inc.  
 Future Plans:  
 Washington and Jefferson College  
 Field: Business

**#73 Kurt Meckey**  
 Ht. 5 11" Wt. 205  
 Off. C Def. DL  
 Clearfield High School  
 Hometown: Clearfield  
 Parents/Guardians:  
 Tim & Mary Lynne Meckey  
 Sponsor:  
 Moyer s Auto Body  
 Future Plans:  
 Slippery Rock University  
 Field:  
 Computer Science



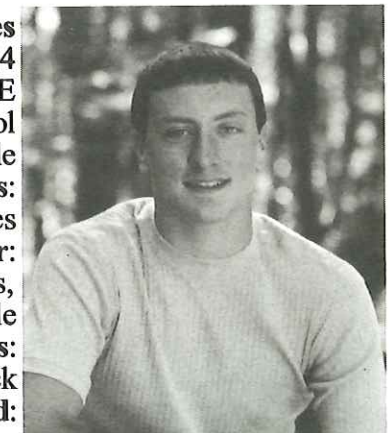
**#4 Stan Koguc**  
 Ht. 5 9" Wt. 195  
 Off. RB Def. LB  
 Philipsburg-Osceola High School  
 Hometown: Philipsburg  
 Parents/Guardians:  
 Anthony & Wendy Koguc  
 Black Moshannon Family Restaurant  
 Future Plans: Clarion  
 Field: Criminal Justice

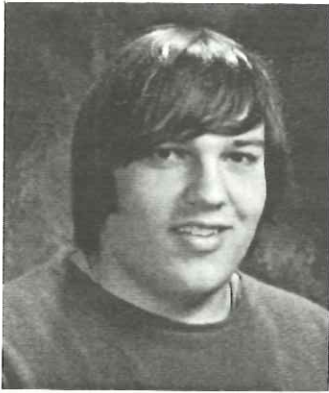
**#65 Neil Miller**  
 Ht. 5 10" Wt. 230  
 Off. Def. DL  
 Punxsutawney High School  
 Hometown: Dayton  
 Parents/Guardians:  
 Vinnie Miller/Tracy McDonald  
 Sponsor:  
 VL - Miller Sales & Service  
 Future Plans:  
 Armed Services



**#8 Scott Laing**  
 Ht. 6 2" Wt. 170  
 Off. WR Def. DB  
 Glendale High School  
 Hometown: Beccaria  
 Parents/Guardians:  
 Scott & Cindy Laing  
 Sponsor:  
 K & F Wood Products, Inc.  
 Future Plans: Clarion  
 Field: Business

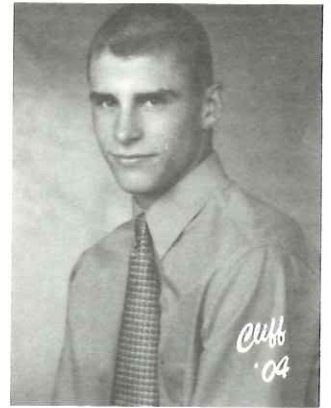
**#68 Tony Morres**  
 Ht. 6 3" Wt. 224  
 Off. C Def. DE  
 Brookville High School  
 Hometown: Brookville  
 Parents/Guardians:  
 Steve & Loretta Morres  
 Sponsor:  
 Fye s Lab Puppies,  
 814-849-5575, Brookville  
 Future Plans:  
 Slippery Rock  
 Field:  
 Health and Physical Education





**#75 Bryant Packer**  
 Ht. 6 3" Wt. 270  
 Off. OL Def. DL  
 Central Mt High School  
 Hometown: Mill Hall  
 Parents/Guardians:  
 Stanley & Angela Packer  
 Sponsor:  
**Future Plans:** West Virginia U.

**#3 Cliff Park**  
 Ht. 5 10" Wt. 150  
 Off. Def.  
 Brookville High School  
 Hometown: Summerville  
 Parents/Guardians:  
 Paul & Diane Park  
 Sponsor:  
 Diane Park Beauty Shop  
**Future Plans:**  
**Field:** Physical Education



**#76 Geoff Peterson**  
 Ht. 6 2" Wt. 300  
 Off. OL Def. DL  
 Brookville High School  
 Hometown: Brookville  
 Parents/Guardians:  
 Rev. Rohn & Marilyn Peterson  
 Sponsor:  
 DeMans Team Sports  
**Future Plans:**  
 Oberlin College  
**Field:** Pre-Law

**#53 Tyler Piotrowski**  
 Ht. 5 11" Wt. 205  
 Off. OL Def. DL  
 West Branch High School  
 Hometown: Morrisdale  
 Parents/Guardians:  
 Dave & Karen Piotrowski  
 Sponsor:  
 Nittany Oil Company/Minitmart  
**Future Plans:**  
 Lycoming College  
**Field:** Engineering



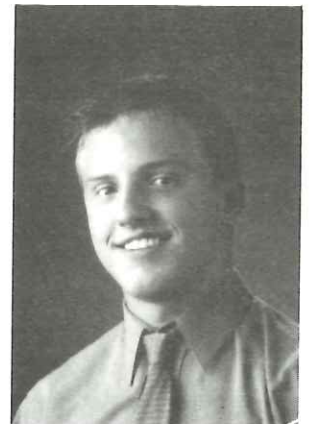
**#19 James Stephen Pribble**  
 Ht. 6' Wt. 165  
 Off. RB Def.  
 Central Mt High School  
 Hometown: Woolrich  
 Parents/Guardians:  
 Randy & Barbara Pribble  
 Sponsor:  
 Central Mtn. Food Products  
**Future Plans:**  
 Lock Haven  
**Field:**  
 Bus. Man/Marketing

**#5 Brent Puller**  
 Ht. 6" Wt. 170  
 Off. WR Def. DB  
 Brookville High School  
 Hometown: Brookville  
 Parents/Guardians:  
 Ray & Gail Puller  
 Sponsor:  
 Hanley & Bird, Inc.  
**Future Plans:**  
 West Virginia  
**Field:** Business



**#67 Mickey Rehring**  
 Ht. 6' Wt. 235  
 Off. OL Def. DL  
 State College High School  
 Hometown: Port Matilda  
 Parents/Guardians:  
 Tom & Monica Rehring  
 Sponsor:  
 Drs. Mooney & Pandolph,  
 Family Medicine  
**Future Plans:**  
 Franklin & Marshall College  
**Field:** Undecided

**#11 Monty Rockey**  
 Ht. 6 1" Wt. 200  
 Off. RB Def. LB  
 BEA High School  
 Hometown: Port Matilda  
 Parents/Guardians:  
 Clair & Sheila Rockey  
 Sponsor:  
 Eagle Valley Personal Care Home  
**Future Plans:**  
 Lock Haven  
**Field:**  
 Elementary Education







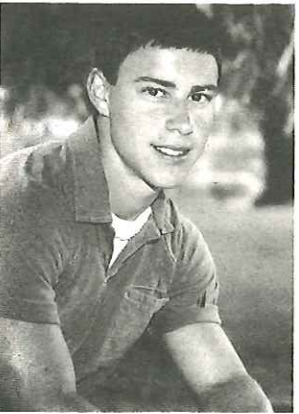
**#22 Curt Royer**  
 Ht. 5 10" Wt. 185  
 Off. WR Def. DB  
 Penns Valley High School  
 Hometown: Spring Mills  
 Parents/Guardians:  
 Doug & Kay Royer  
 Sponsor:  
 PA Pizza  
 Brewsky s  
 Future Plans: Temple  
 Field: Pre-Law

**#24 Nathan Shadeck**  
 Ht. 6 1" Wt. 170  
 Off. WR Def. DB  
 Clearfield High School  
 Hometown: Frenchville  
 Parents/Guardians:  
 Steve & Penny Shadeck  
 Sponsor:  
 Shadeck Construction  
 & Millwork  
 Future Plans:  
 Slippery Rock  
 Field:  
 Health & Physical Education



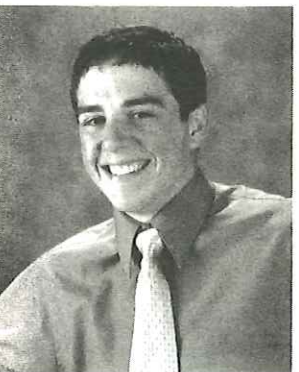
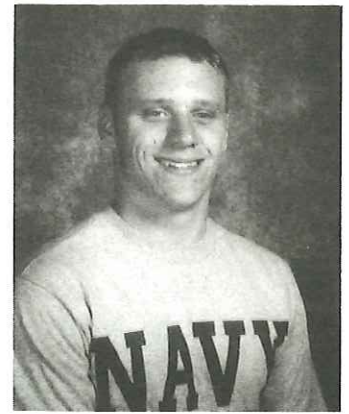
**#1 Andy Snyder**  
 Ht. 6 1" Wt. 175  
 Off. WR Def. DB  
 Punxsutawney High School  
 Hometown: Punxsutawney  
 Parents/Guardians:  
 Richard & Abby Snyder  
 Sponsor:  
 D. E. Limited F. P.  
 Future Plans: Juniata College  
 Field: Computer Science

**#13 Kevin Suhey**  
 Ht. 6 2" Wt. 195  
 Off. QB Def. DB  
 State College High School  
 Hometown: Boalsburg  
 Parents/Guardians:  
 Paul & Carolyn Suhey  
 Sponsor:  
 University Orthopedic Center  
 Future Plans: PSU  
 Field: Engineering



**#44 Tony Torsell**  
 Ht. 5 9" Wt. 160  
 Off. WR Def. DB  
 Bellefonte High School  
 Hometown: Bellefonte  
 Parents/Guardians:  
 Dan & Leslee Torsell  
 Sponsor:  
 Pennwood Corp.  
 Future Plans: Clemson  
 Field: Architecture

**#32 Bill Waugh**  
 Ht. 6' Wt. 220  
 Off. OL Def. LB  
 Bellefonte High School  
 Hometown: Bellefonte  
 Parents/Guardians:  
 Jim & Joyce Waugh  
 Sponsor:  
 Friends of Bill Waugh  
 Future Plans:  
 Grove City College  
 Field: Polical Science



**#2 Adam White**  
 Ht. 5 11" Wt. 190  
 Off. RB Def. DB  
 Philipsburg-Osceola  
 Hometown: Morrisdale  
 Parents/Guardians:  
 Jerry & Mary White  
 Sponsor:  
 Lamb Chiropractic  
 Future Plans: West Verginia  
 Field: Undecided

**#20 Ryan Dobo**  
 Ht. 5 6 Wt. 145  
 Off. RB Def. DB  
 Philipsburgh-Osceola  
 Parents/Guardians:  
 Jim & Denise Dobo  
 Sponsor:  
 JJ Powell  
 Future Plans:  
 PSU-DuBois  
 Field:  
 Secondary Ed.



# NORTH ROSTER 2004

No.	Name	School	Ht.	Wt.	Off.	Def.
1	Andy Snyder	Punxsutawney	6 1"	175	WR	DB
2	Adam White	Philipsburg-Osceola	5 11"	190	RB	DB
3	Cliff Park	Brookville	5 10"	150		
4	Stan Koguc	Philipsburg-Osceola	5 9"	195	RB	LB
5	Brent Puller	Brookville	6"	170	WR	DB
6	Scott Koch	State College	5 8"	155	RB	DB
7	Sean Hanna	Central Mountain	6 4"	185	QB	
8	Scott Laing	Glendale	6 2"	170	WR	DB
9	Chris Gould	Central Mountain	6 1"	200	P	K
10	Matt Homan	State College	5 11"	175	WR	DB
11	Monty Rocky	Bald Eagle Area	6 1"	200	RB	LB
13	Kevin Suhey	State College	6 2"	195	QB	DB
14	Todd Bumgardner	Penns Valley	6'	200	QB	LB
16	Greg Gilbert	Curwensville	6 1"	195	WR	DB
19	James Stephen Pribble	Central Mountain	6'	165	RB	
20	Ryan Dobo	Philipsburg-Osceola	5 6"	145	RB	DB
22	Curt Royer	Penns Valley	5 10"	185	WR	DB
23	Jonathon Heverly	Bald Eagle Area	5 10"	175	WR	DB
24	Nathan Shadeck	Clearfield	6 1"	170	WR	DB
32	Bill Waugh	Bellefonte	6'	220	OL	LB
36	Larry Hayward	Moshannon Valley	6 1"	210	RB	LB
41	Gary Kephart	Curwensville	6'	214	RB	LB
44	Tony Torsell	Bellefonte	5 9"	160	WR	DB
52	Gerald Hopkins	Moshannon Valley	6 1"	250	OL	DL
53	Tyler Piotrowski	West Branch	5 11"	205	OL	DL
54	Douglas Leitch	Penns Valley	6 2"	210	C	DE
60	Mark Kaczmarczyk	Brookville	5 11"	220	OL	DL
61	Ryan Graham	Clearfield	6 2"	283	OL	DL
63	Josh Belcher	Penns Valley	6 2"	235	OL	DE
65	Neil Miller	Punxsutawney	5 10"	230		DL
67	Mickey Rehring	State College	6'	35	OL	DL
68	Tony Morres	Brookville	6 3"	224	C	DE
70	Bill Gomola	Bald Eagle Area	6 2"	290	OL	DL
72	Tyler Fida	Central Mountain	5 10"	230	OL	
73	Kurt Meckey	Clearfield	5 11"	205	C	DL
75	Bryant Packer	Central Mountain	6 3"	270	OL	DL
76	Geoff Peterson	Brookville	6 2"	300	OL	DL
81	Andrew Crotzer	Clearfield	5 11"	175	WR	DB
86	Nate Chyle	State College	6 4"	215	TE	DE
88	Steve Holencik	Moshannon Valley	6 4"	225	TE	DE/LB

Head Coach:	Dave Lintal, State College	Trainer:	Scott DeVore
Assistant Coaches:	Mark Baney, State College		Jason Chelik
	John Cryder, State College		
	Tom Sallade, State College	Team Physician:	Dr. Paul Suhey
	Mike Snyder, State College		University Orthopedics
	Mark Kirk, Punxsutawney		

# SOUTH ROSTER 2004

No.	Name	School	Ht.	Wt.	Off.	Def.
1	Jarvis Reeves	Hollidaysburg	5 11"	175	WR	DB
2	Jesse Hileman	Central	5 10"	165	WR	LB
3	Paul Frederick	Central	6 2"	155	QB	DB
5	Jeremy Knott	Claysburg-Kimmel	5 10"	165	QB	DE
6	Alex Waleski	Huntingdon	6 3"	235	RB/TE	LB
7	Craig Tremel	Penn Cambria	5 10"	175	WR	DB
11	Max Soellner	Tyrone	6 2"	210	TE	DE
13	Geoff Kozak	Huntingdon	6'	177	QB/WR	DB
17	Corey Doyle	Southern Hunt	6 3"	170	QB	DB
20	Corey Gildea	Hollidaysburg	5 10"	173	RB	DB
21	Matt Georgiana	Bishop Guilfoyle	5 11"	188	RB	LB
23	Josh DeStefano	Bishop Guilfoyle	6'	198	RB	LB
24	Chuck Koch	Altoona	5 8"	185	RB	DB
27	Corry Nale	Claysburg-Kimmel	5 9"	155	RB	DB
28	Justin Angermeir	Altoona	6 1"	190		LB
30	Lance T. Tippett	Altoona	6 2"	145	WR	
32	Gifford Piper	Hollidaysburg	5 10"	200	RB	
33	Lucas Stewart	Indian Valley	5 11"	180	RB	LB
34	Andy Pugh	Hollidaysburg	6 2"	180	TE	DE
40	Chris Bilger	Southern Hunt	6 1"	220	RB	LB
44	Pete Doyle	Penn Cambria	6'	170	RB	LB
45	Jonathon Baker	Lewistown	5 9"	180	RB	LB
50	Josh Isenberg	Central	6 2"	225	C	DL
53	Mike Miklinski	Penn Cambria	6'	215	OL	DE
55	Justin Clark	Tyrone	6 2"	215	OL	DE
58	Jeremy Stanowski	Huntingdon	5 9"	231	OL	DL
60	Roger Pittman	Penn Cambria	6'	220	C	DL
64	Tyler Moyer	Hollidaysburg	5 10"	220	OL	LB
67	Josh Petucci	Bishop Guilfoyle	5 11"	270	OL	DL
69	Sean Vahey	Claysburg-Kimmel	6' 3"	08	OL	DL
71	Terry Hawn Jr.	Juniata Valley	6 1"	210	OL	DE
73	Jack McCartney	Mt Union	6 1"	285	OL	DL
76	Jim Becker	Williamsburg	6 7"	380	OL	DL
82	Jared Dyer	Lewistown	5 10"	160	WR	DB
84	Lee Kensinger	Central	6 3"	180	WR	DB
86	Nick Kirsch	Bishop Guilfoyle	6 2"	200	OL	DE
88	Matt Plummer	Bellwood-Antis	6'	195	TE	LB
98	George Watson	Indian Valley	5 10"	183	C	DL

Head Coach: Jack Krider, Central  
 Assistant Coaches: Jeff Lingenfelter, Claysburg-Kimmel  
 Tom Bussman, Central  
 Fred Guyer, Central  
 John Franco, Tyrone  
 Bud Chonko, Central  
 Tom Gibboney, Huntingdon

Trainers: Craig Sechler  
 Dave Showalter  
 Team Physician: Dr. Paul Suhey  
 University Orthopedics

# SOUTH SCHOOLS

**O** ALTOONA  
BELLWOOD-ANTIS  
BISHOP GUILFOYLE  
CENTRAL  
**U** CLAYSBURG-KIMMEL  
HOLLIDAYSBURG  
HUNTINGDON  
**T** INDIAN VALLEY  
JUNIATA VALLEY  
LEWISTOWN  
**H** MOUNT UNION  
PENN CAMBRIA  
S. HUNTINGDON  
TYRONE AREA  
WILLIAMSBURG

# SQUAD



**Bud Chonko**  
Central  
Asst. Coach



**Tom Gibboney**  
Huntingdon  
Asst. Coach

**Jack Krider**  
Central  
Head Coach



**Tom Bussman**  
Central  
Asst. Coach



**John Franco**  
Tyrone  
Asst. Coach



**Jeff Lingenfelter**  
Claysburg-Kimmel  
Asst. Coach





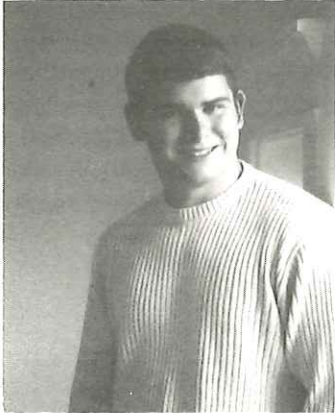
**#28 Justin Angermeir**  
 Ht. 6 1" Wt. 190  
 Off. Def. LB  
 Altoona High School  
 Hometown: Altoona  
 Parents/Guardians:  
 Richard Garner & Denise Angermeier  
 Sponsor:

**Future Plans:** Univ. of California, PA  
**Field:** Business

**#55 Justin Clark**  
 Ht. 6 2" Wt. 215  
 Off. OL Def. DE  
 Tyrone High School  
 Hometown: Tyrone  
 Parents/Guardians:  
 Bill & Mary Clark  
 Sponsor:

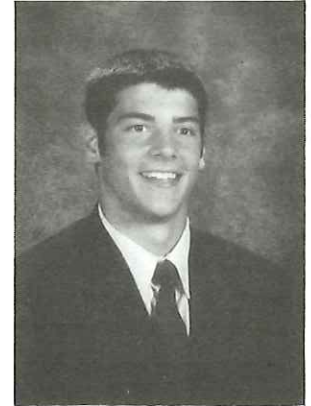
North American Comm.  
**Future Plans:**

**Field:** Pre-Law



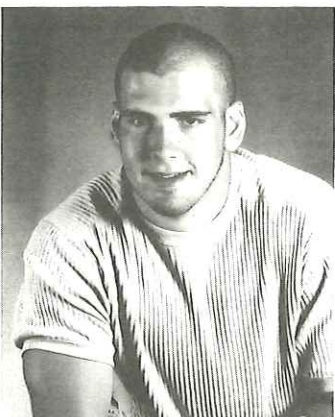
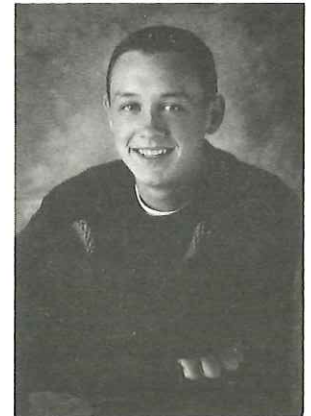
**#45 Jonathan Baker**  
 Ht. 5 9" Wt. 180  
 Off. RB Def. LB  
 Lewistown High School  
 Hometown: Lewistown  
 Parents/Guardians:  
 Mark & Susan Baker  
 Sponsor:  
 Overhead Door,  
 PA Division  
**Future Plans:** Shippensburg  
**Field:** Business

**#23 Josh DeStefano**  
 Ht. 6' Wt. 198  
 Off. RB Def. LB  
 Bishop Guilfoyle High School  
 Hometown: Altoona  
 Parents/Guardians:  
 Ralph & Karen DeStefano  
 Sponsor:  
 The DeStefano & Beard Family  
**Future Plans:** Bucknell  
**Field:** Civil Engineering



**#76 Jim Becker**  
 Ht. 6 7" Wt. 380  
 Off. OL Def. DL  
 Williamsburg High School  
 Hometown: Williamsburg  
 Parents/Guardians:  
 James & Nancy Becker  
 Sponsor:  
 WHS Football Boosters  
**Future Plans:** Undecided  
**Field:** Ag. Man./Criminology

**#17 Corey Doyle**  
 Ht. 6 3" Wt. 170  
 Off. QB Def. DB  
 Southern Hunt High School  
 Hometown: Orbinsonia  
 Parents/Guardians:  
 Doug & Marsha Doyle  
 Sponsor:  
 Southern Huntingdon County  
 Football Booster Culb  
**Future Plans:**  
 Juniata College  
**Field:** Business



**#40 Chris Bilger**  
 Ht. 6 1" Wt. 220  
 Off. RB Def. LB  
 Southern Hunt High School  
 Hometown: Orbinsonia  
 Parents/Guardians:  
 Rodney & Denise Bilger  
 Sponsor:  
 Southern Huntingdon County  
 Football Booster Culb  
**Future Plans:** Lock Haven  
**Field:**  
 Sports Administration

**#44 Pete Doyle**  
 Ht. 6' Wt.  
 Off. RB Def. LB  
 Penn Cambria High School  
 Hometown:  
 Parents/Guardians:  
 Paul & Mary Doyle  
 Sponsor:

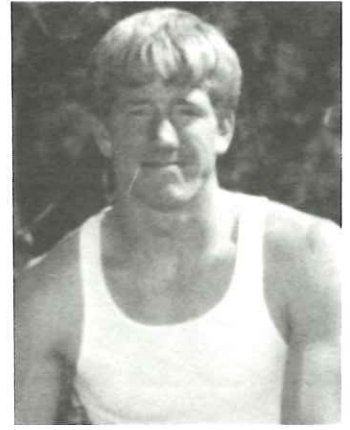
**Future Plans:**  
 Undecided  
**Field:**  
 Undecided





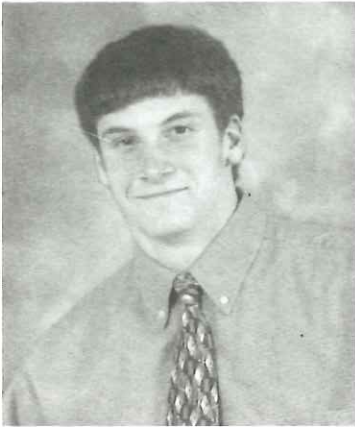
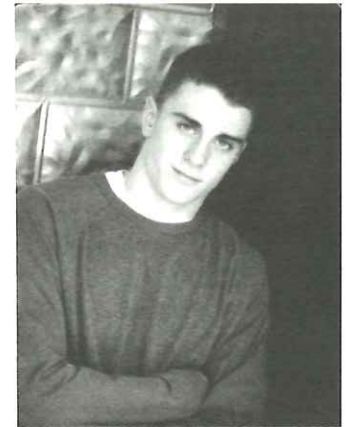
**#82 Jared Dyer**  
 Ht. 5 10" Wt. 160  
 Off. WR Def. DB  
 Lewistown High School  
 Hometown: McVeytown  
 Parents/Guardians:  
 Jerry & Kim Dyer  
 Sponsor:  
 Treasured Homes  
 Future Plans: Millersville  
 Field: Technology Education

**#71 Terry Hawn Jr.**  
 Ht. 6 1" Wt. 210  
 Off. OL Def. DE  
 Juniata Valley High School  
 Hometown: Huntingdon  
 Parents/Guardians:  
 Terry & Shirley Hawn  
 Sponsor:  
 Drayer P. T. Institute  
 Future Plans:  
 Construction Worker  
 Field:



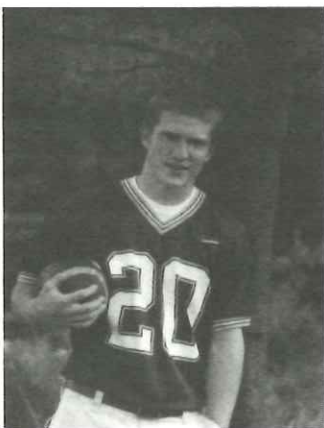
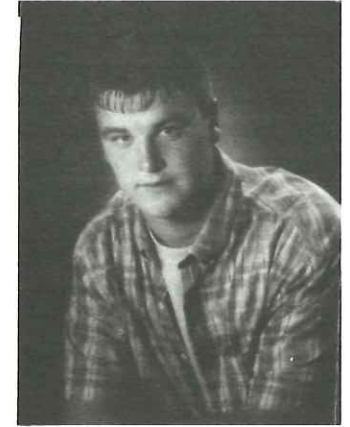
**#3 Paul Frederick**  
 Ht. 6 2" Wt. 155  
 Off. QB Def. DB  
 Central High School  
 Hometown: Martinsburg  
 Parents/Guardians:  
 Mark & Carla Frederick  
 Sponsor:  
 Cove Farm Supply,  
 Cargill Feeds  
 Hershberger & Myers Ins.  
 Future Plans: PSU-Altoona  
 Field:  
 Elementary Education

**#2 Jessie Hileman**  
 Ht. 5 10" Wt. 165  
 Off. WR Def. LB  
 Central High School  
 Hometown: Martinsburg  
 Parents/Guardians:  
 Arnie Hileman, Jeanne Hileman  
 Sponsor:  
 Douth & Snyder Construction  
 Future Plans: Shippensburg  
 Field: Undecided



**#21 Matt Georgiana**  
 Ht. 5 11" Wt. 188  
 Off. RB Def. LB  
 Bishop Guilfoyle High School  
 Hometown: Altoona  
 Parents/Guardians:  
 Vince & Mary Lou Georgiana  
 Sponsor:  
 Angelo Pacifico &  
 Sons Bakery  
 Future Plans:  
 Lycoming College  
 Field:  
 Business

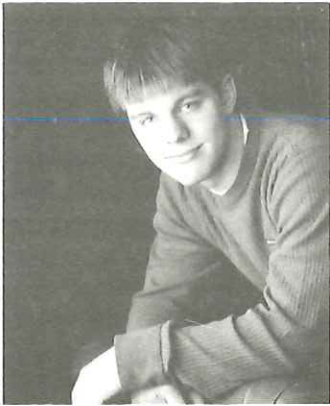
**#50 Josh Isenberg**  
 Ht. 6 2" Wt. 225  
 Off. C Def. DL  
 Central High School  
 Hometown: Martinsburg  
 Parents/Guardians:  
 George & Mary Isenberg  
 Sponsor:  
 Metzler Auto, Truck & Trailor  
 Leidy s In Martinsburg  
 Jeremy Over  
 Future Plans: PSU-Altoona  
 Field: Electrical Engineering



**#20 Corey Gildea**  
 Ht. 5 10" Wt. 173  
 Off. RB Def. DB  
 Hollidaysburg High School  
 Hometown: Hollidaysburg  
 Parents/Guardians:  
 Tim & Lori Gildea  
 Sponsor:  
 Ansley RV/  
 Pro Active Sports  
 Future Plans:  
 Field: Athletic Training-  
 Sports Medicine

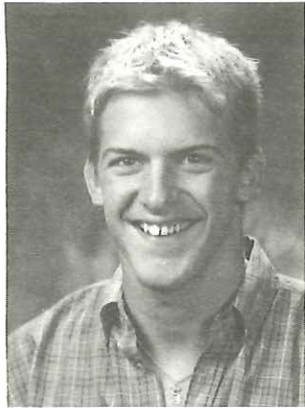
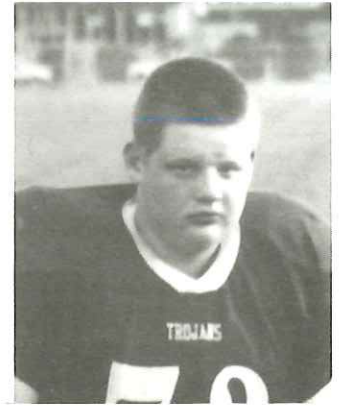
**#84 Lee Kensinger**  
 Ht. 6 3" Wt. 180  
 Off. WR Def. DB  
 Central High School  
 Hometown: Martinsburg  
 Parents/Guardians:  
 Kenneth & Brenda Kensinger  
 Sponsor:  
 Martinsburg RV Expo-  
 Motor Homes, Fifth Wheels, &  
 Travel Trailers  
 Future Plans: Mount Aloysius  
 Field: Undecided





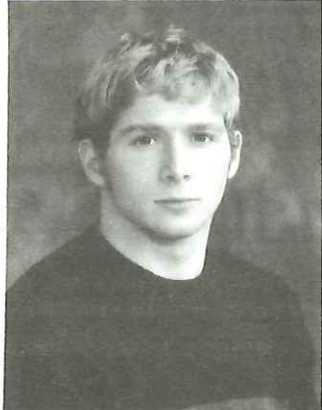
**#86 Nick Kirsch**  
 Ht. 6 2" Wt. 200  
 Off. OL Def. DE  
 Bishop Guilfoyle High School  
**Hometown:** Roaring Spring  
**Parents/Guardians:**  
 Bill & June Kirsch  
**Sponsor:**  
 Nason Hosipal  
**Future Plans:** St. Vincent  
**Field:** Mechanical Engineering

**#73 Jack McCartney**  
 Ht. 6 1" Wt. 285  
 Off. OL Def. DL  
 Mt Union High School  
**Hometown:** Mapleton Depot  
**Parents/Guardians:**  
 Jack McCartney, Wendy Macknair  
**Sponsor:**  
 Mt. Union High School  
 Football Club  
**Future Plans:** Military  
**Field:**



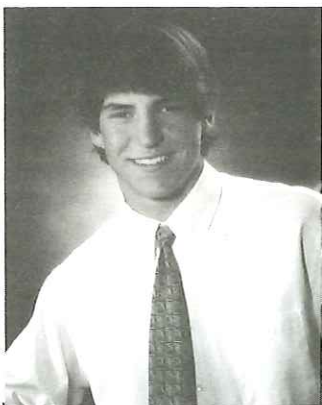
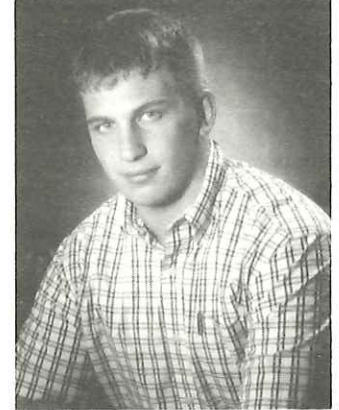
**#5 Jeremy Knott**  
 Ht. 5 10" Wt. 165  
 Off. QB Def. DE  
 Claysburg-Kimmel High School  
**Hometown:** Claysburg  
**Parents/Guardians:**  
 Jerry Knott & Cynthia Venesky  
**Sponsor:**  
 K. R. Masonry  
**Future Plans:**  
**Field:** Nursing

**#53 Mike Miklinski**  
 Ht. 6' Wt. 215  
 Off. OL Def. DE  
 Penn Cambria High School  
**Hometown:** Lilly  
**Parents/Guardians:**  
 Garry & Karen Miklinski  
**Sponsor:**  
 Michael s Godmother  
**Future Plans:**  
**Field:** Psychology



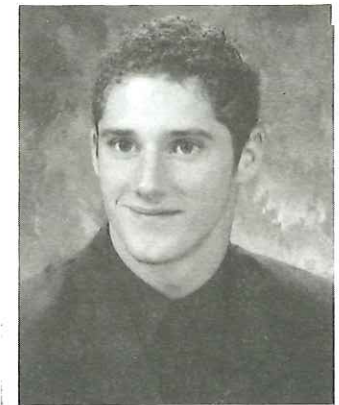
**#24 Chuck Koch**  
 Ht. 5 8" Wt. 185  
 Off. RB Def. DB  
 Altoona High School  
**Hometown:** Altoona  
**Parents/Guardians:**  
 Chuck & Cindy Koch  
**Sponsor:**  
 Wendy s of Altoona  
**Future Plans:** Lock Haven  
**Field:** Bus. Man.

**#64 Tyler Moyer**  
 Ht. 5 10" Wt. 220  
 Off. OL Def. LB  
 Hollidaysburg High School  
**Hometown:** Duncansville  
**Parents/Guardians:**  
 Scott & Judy Moyer  
**Sponsor:**  
 Home Nursing Agency  
**Future Plans:** PSU  
**Field:** Engineering



**#13 Geoff Kozak**  
 Ht. 6' Wt. 177  
 Off. QB/WR Def. DB  
 Huntingdon High School  
**Hometown:** Huntingdon  
**Parents/Guardians:**  
 Paul & Jean Kozak  
**Sponsor:**  
 Drs. Buza, Miller & Thomas  
**Future Plans:**  
**Field:** Chemistry

**#27 Corry Nale**  
 Ht. 5 9" Wt. 155  
 Off. RB Def. DB  
 Claysburg-Kimmel High School  
**Hometown:** Claysburg  
**Parents/Guardians:**  
 Doug Nale & Sharon Hainsey  
**Sponsor:**  
 Jill Brumbaugh - UGA  
**Future Plans:** Slippery Rock  
**Field:** Physical Therapy





**#67 Josh Petucci**  
 Ht. 5 11" Wt. 270  
 Off. OL Def. DL  
 Bishop Guilfoyle  
 High School  
**Hometown:** Altoona  
**Parents/Guardians:**  
 Albert & Pam Petucci  
**Sponsor:**  
 North American  
 Communications, Inc.  
**Future Plans:**

**Field:**



**#32 Gifford Piper**  
 Ht. 5 10 Wt. 200  
 Off. RB Def.  
 Hollidaysburg High School  
**Hometown:** Hollidaysburg  
**Parents/Guardians:**  
 Fred & Becky Piper  
**Sponsor:**  
 Lakemont Veterinary Clinic  
**Future Plans:**  
 Washington & Jefferson  
**Field:** Biology

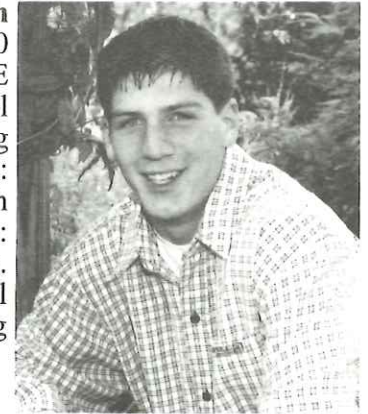


**#60 Roger Pittman**  
 Ht. 6' Wt. 220  
 Off. C Def. DL  
 Penn Cambria High School  
**Hometown:** Gllitzin  
**Parents/Guardians:**  
 Lester & Joyce Pittman  
**Sponsor:**  
 C & G Savings Bank  
**Future Plans:**  
 Albright College  
**Field:**  
 Mathematics Teacher

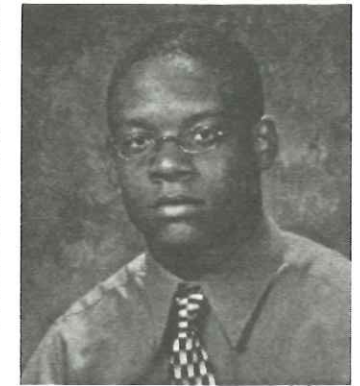


**#88 Matt Plummer**  
 Ht. 6' Wt. 195  
 Off. TE Def. LB  
 Bellwood-Antis High School  
**Hometown:** Bellwood  
**Parents/Guardians:**  
 Mike & Tina Plummer  
**Sponsor:**  
 Courtesy Motors -  
 Dodge, Nissan, Ford, Kia  
**Future Plans:**  
 Shippensburg University  
**Field:** Criminal Justice

**#34 Andy Pugh**  
 Ht. 6 2" Wt. 180  
 Off. TE Def. DE  
 Hollidaysburg High School  
**Hometown:** Hollidaysburg  
**Parents/Guardians:**  
 William & Karen Pugh  
**Sponsor:**  
 Metz Builders, Inc.  
**Future Plans:** Technical School  
**Field:** Computer Networking



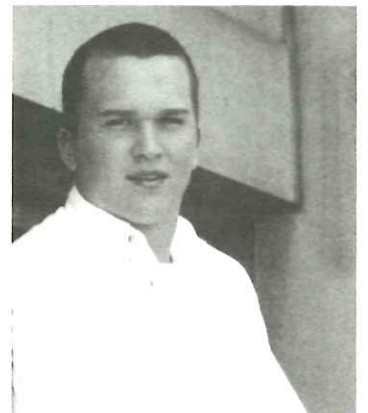
**#1 Jarvis Reeves**  
 Ht. 5 11" Wt. 175  
 Off. WR Def. DB  
 Hollidaysburg High School  
**Hometown:** Hollidaysburg  
**Parents/Guardians:**  
 Charles & Donna Reeves  
**Sponsor:**  
 The Locker Room  
**Future Plans:** PSU  
**Field:**



**#11 Max Soellner**  
 Ht. 6 2" Wt. 210  
 Off. TE Def. DE  
 Tyrone High School  
**Hometown:** Tyrone  
**Parents/Guardians:**  
 Max & Sherri Soellner  
**Sponsor:**  
 Healthy Alternatives  
**Future Plans:** Undecided  
**Field:** Undecided

**#58 Jeremy Stanowski**  
 Ht. 5 9" Wt. 231  
 Off. OL Def. DL  
 Huntingdon High School  
**Hometown:** Huntingdon  
**Parents/Guardians:**  
 John & Leslie Stanowski  
**Sponsor:**  
 Gary O Korn State Farm Ins.  
**Future Plans:**

**Field:** Criminology/Elementary Ed.

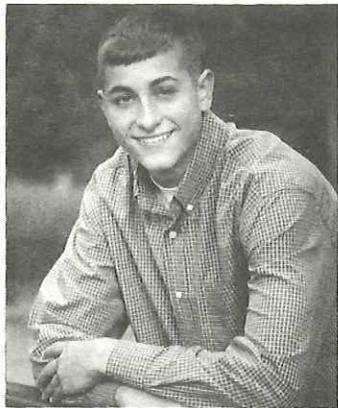






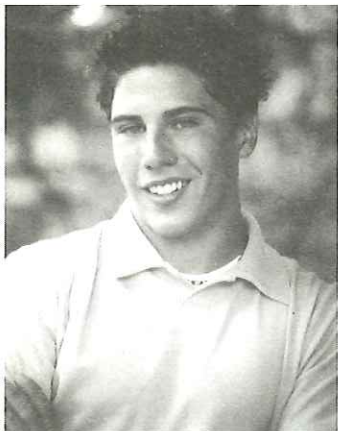
**#33 Lucas Stewart**  
 Ht. 5 11" Wt. 180  
 Off. RB Def. LB  
 Indian Valley High School  
 Hometown: Lewistown  
 Parents/Guardians:  
 Scott & Cynthia Stewart  
 Sponsor:  
 Stewart Home Improvement  
 Future Plans: IUP  
 Field: Business

**#69 Sean Vahey**  
 Ht. 6' Wt. 308  
 Off. OL Def. DL  
 Claysburg-Kimmel High School  
 Hometown: Claysburg  
 Parents/Guardians:  
 Donald & Marsha J. Vahey  
 Sponsor:  
 Yingling Insurance Agency  
 Future Plans:  
 Field: Nursing



**#30 Lance T. Tippett**  
 Ht. 6 2" Wt. 145  
 Off. WR Def.  
 Altoona High School  
 Hometown: Altoona  
 Parents/Guardians:  
 Ray &  
 Gail Tippett  
 Sponsor:  
 Waddell & Sons  
 Professional Painting, Inc.  
 Future Plans: Juniata College  
 Field: Physical Therapy

**#6 Alex Waleski**  
 Ht. 6 3" Wt. 235  
 Off. RB/TE Def. LB  
 Huntingdon High School  
 Hometown: Huntingdon  
 Parents/Guardians:  
 Art & Donna Waleski  
 Sponsor:  
 S & A Homes,  
 Altoona Region  
 Future Plans: Shippensburg  
 Field: Biotechnology



**#7 Craig Tremel**  
 Ht. 6' Wt.  
 Off. WR Def.  
 Penn Cambria High School  
 Hometown:  
 Parents/Guardians:  
 Regis & Patty Tremel  
 Sponsor:  
 Future Plans:  
 Shepard University  
 Field:  
 Sports Management

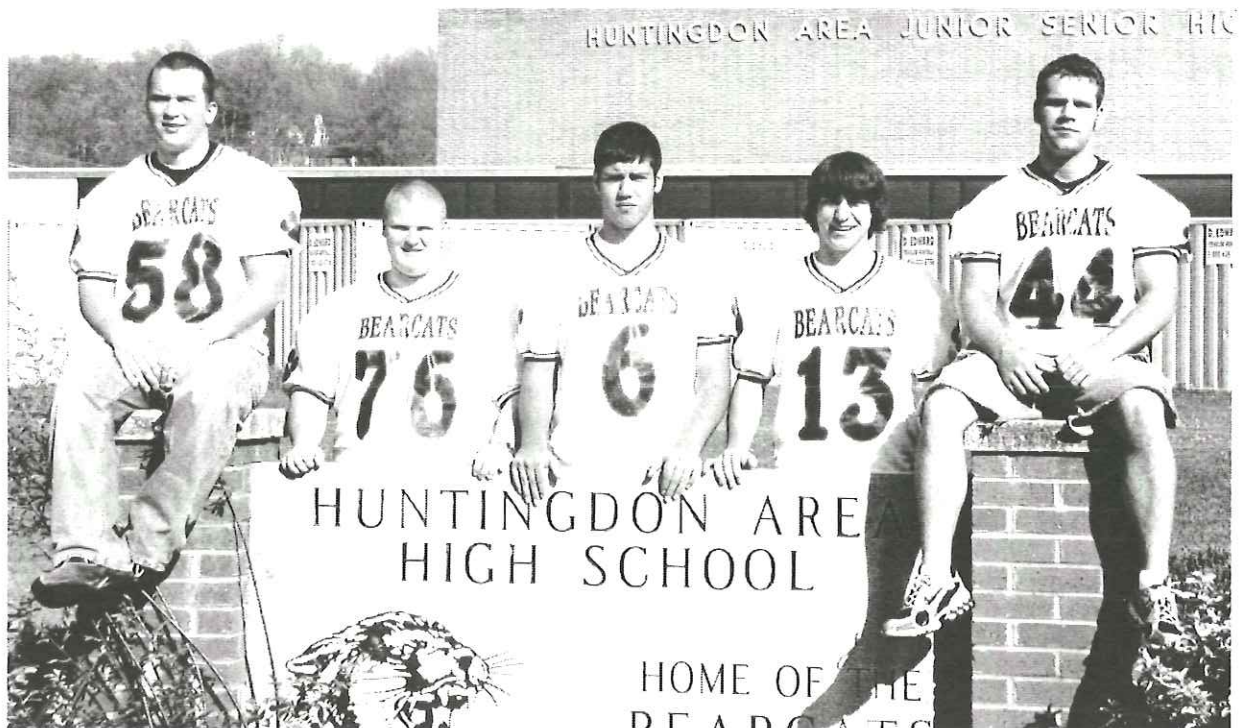
**#98 George Watson**  
 Ht. 5 10" Wt. 183  
 Off. C Def. DL  
 Indian Valley High School  
 Hometown: Burnham  
 Parents/Guardians:  
 George & Kathy Watson  
 Sponsor:  
 MeridianRail & Friends  
 Future Plans: ITT Technical Institute  
 Field: Computer &  
 Electronical Engineering



# HUNTINGDON BEARCATS BOOSTER CLUB



would like to congratulate all players and have fun tonight. Good Luck in your future endeavors.



#58 Jeremy  
Stanowski

#76 Andy  
Kyle

#6 Alex  
Waleski

#13 Geoff  
Kozak

#44 Tyler  
Higgins

## BEARCAT ALL-STARS

# Where are they now . . .

## Player Profiles from the 94 Uni-Mart Classic

**Chris Achuff** (Bellefonte) Graduated from Bloomsburg University after lettering for four years as outstanding outside linebacker for the Huskie Defense. Has coached at Bloomsburg University, Bryant College, Kutztown Univeristy and is currently is a graduate assistant at Penn State. His father, Ken, was inducted into the Central Pennsylvania Coaches Hall of Fame in 2003.

**A. J. Hoenstine** (Central) Graduated from Mansfield University with a degree in Elementary Education after an outstanding Baseball career. Selected to the PSAC All Conference team in 1995, 1997, and 1998 and was an Academic All-American in 1998. He ha been an assistant Football and Baseball coach at Central and will become the Head Football Coach for the 2004 season.

## CENTRAL PENNSYLVANIA FOOTBALL COACHES ASSOCIATION HALL OF FAME



1995  
J. Gawen Stoker  
Bald Eagle Area



1997  
Jack Bailey  
Philipsburg-Osceola



1997  
BILL VROMAN  
West Branch



1998  
Harold Price  
Holidaysburg



1998  
Bill Clouse  
Juniata Valley



1999  
Ron Pavlechko  
State College



1999  
Mike Flickenger  
Penns Valley



2000  
Alan Hartman  
Mt. Union



2000  
Pete Sellers  
Huntingdon



2001  
JOHN WETZLER  
Bellefonte Area



2001  
LYLE DOMICO  
Curwensville



2002  
Dave Baker  
Williamsburg



2002  
Chet Dillen  
Bellwood-Antis



2003  
MIKE PACKER  
Lock Haven,  
Central Mountain



2003  
HERM WERTZ  
DuBois



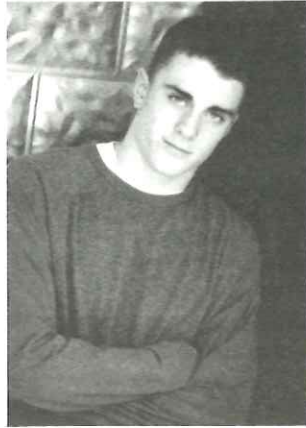
2003  
E. KEN A CE A CHUFF  
BELLEFONTE AREA

# SPRING COVE QUARTERBACK CLUB

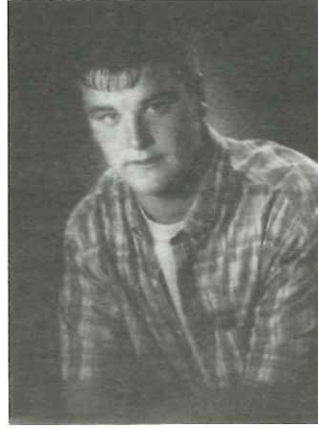
Sends Best Wishes for Success To



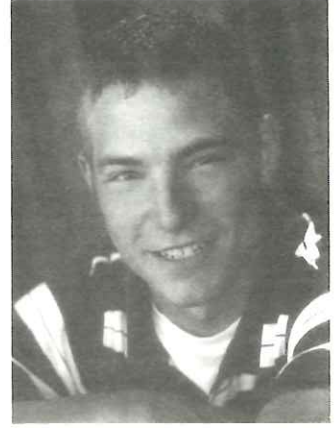
#3 Paul Frederick



#2 Jesse Hileman



#50 Josh Isenberg



#84 Lee Kensinger

---

## ALTOONA AREA HIGH SCHOOL

Big

# A

Booster Club

Congratulates  
and

Wishes the best in the future  
to our Lezzer All-Star Athletes.



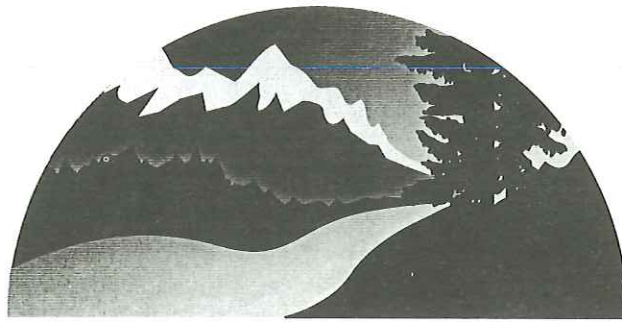
#28 Justin  
Angermeir



#24 Chuck  
Koch



#30 Lance T.  
Tippett



# **DRAYER**

**Physical Therapy Institute**

*Leading the Way to Good Health*

*Ready to serve your physical therapy and sports medicine needs at the following locations:*

**ALTOONA CENTER**

3200 Pleasant Valey Blvd.  
Altoona, PA 16602  
**PHONE: 814-949-9500**

**LEWISTOWN CENTER**

152 E. Market Street, Suite 200  
Lewistown, PA 17044  
**PHONE: 717-242-4840**

**CLEARFIELD CENTER**

900 Leonard Street  
Clearfield, PA 16830  
**PHONE: (814) 762-8356**

**ROARING SPRING CENTER**

506 Route 36 South  
Roaring Spring, PA 16673  
**PHONE: 814-224-1370**

*Specializing in...*

- ◆ Sports and orthopedic rehabilitation
- ◆ Outpatient physical therapy for spine and extremity injuries as well as post operative patients
- ◆ Treatment of acute injuries with various manual techniques
- ◆ Exercise-based programs for all patient populations including workman's compensation, auto insurance, and medicare
- ◆ Community outreach and educational programs

# The Bellwood-Antis Quarterback Club Salutes



## #88 Matt Plummer

BLUE DEVIL COACHING STAFF

HEAD COACH: JOHN HAYES

VARSITY ASSISTANTS: Bill Crowell, Randy Miller, Scott Boyer, Nick Lovrich, Mike Estep  
 Charlie Burch, Junior High Head Coach; Galen Claar, Equipment Manager  
 Jr. High Assistants: Art Partner, Chuck Erickson, Rick Schreirer, Brandon Hescoc

## BISHOP GUILFOYLE HIGH SCHOOL

Congratulations & Good Luck  
To Our Participating Student Athletes



#23 Josh DeStefano



#21 Matt Georgiana



#86 Nick Kirsch



#67 Josh Petucci

## MeadWestvaco

Williamsburg Location

*Congratulates:*



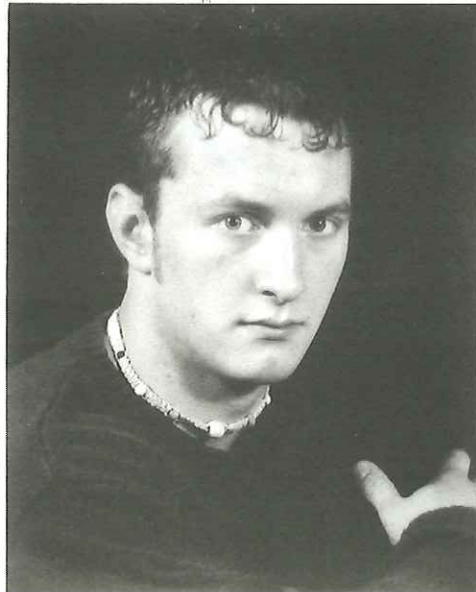
#76 James Becker

Williamsburg High School

2003 - 2004

Scholar Athlete

# TYRONE GOLDEN EAGLES



**#55 Justin Clark**

**Success! Through Hard Work and Dedication  
Good Luck Men**

**Ad Sponsored by the Tyrone Golden Eagle Football Boosters.**

# LEZZER LUMBER FOOTBALL CLASSIC GAME RULES

## OFFENSIVE RESTRICTIONS:

Must play with a balanced line. There must be three men on either side of center on the line of scrimmage. The offense may align in or motion to trips formation as long as one running back remains aligned in the backfield between the tackles. Each team must attempt passes on 30% of the offensive plays. Percentages will be checked midway through the third quarter. If under the 30% passes have been thrown, each non-pass play will be penalized as unsportsmanlike conduct until the percentage is met and maintained.

Forced scrambles and sacks shall be counted as pass percentage.

## DEFENSIVE RESTRICTIONS:

Must align in basic 5-2 with a man on the center, a man on each tackle, a man on each end (or outside the defensive tackle on a split end side.) Linebackers must be over the guards and deeper than the heels of the defensive tackles. Secondary may be man or zone in any desired scheme. Defensive ends (one or both may drop for pass coverage) but must start in alignment outside defensive tackle on or off the line. There shall be no blitzing or shooting linebackers or secondary. Slanting & Looping by front five is permitted.

## SPECIAL FOR KICKING GAME:

In kicking game situations the linebackers may move up onto line of scrimmage, and the secondary may move up (but must stay outside the defensive end): however, no more than 7 may rush on any one play.

## SPECIAL FOR GOAL-LINE:

Anytime the offense has less than three yards to go for a first down or a touchdown, the linebackers may move as close to the line as desired, and the secondary may place two men on the line (secondary men must be outside the defensive end). After a score by either team, a team that is behind by 9 or more points will have the choice to kick-off or receive.

## PLAYING TIME:

Each player must participate for at least 15 plays.

## TIME SPECIFICATIONS:

Quarters 1 and 3 will be 12 minutes

Quarters 2 and 4 will be 15 minutes

## TIE BREAKER:

If the score is tied at the end of regulation play it will stand as a tie.

## GOOD LUCK



**#5 Jeremy  
Knott**



**#27 Cory  
Nale**



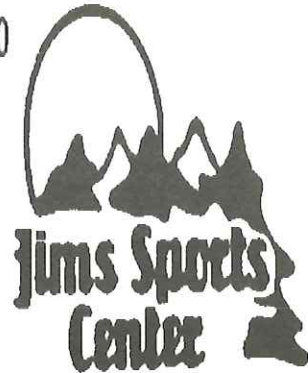
**#69 Sean  
Vahey**

from the

**CLAYSBURG - KIMMEL  
FOOTBALL  
BOOSTER CLUB**

26 N. 2nd St.  
Clearfield, PA 16830

Phone (814) 765-3582  
Fax (814) 765-7467



Embroidery - Screen Printing  
Team Sales

Printing Done  
on Premises

DANIEL L. MALLOY



# forty-seventh Annual



**FOOTBALL CLASSIC**

**July 24, 2004**

**Hersheypark Stadium 7:00 PM**

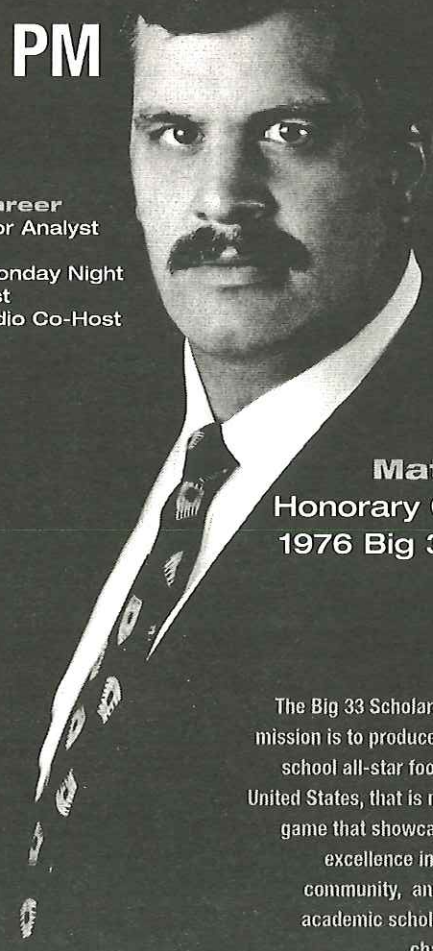
**Pennsylvania vs. Ohio**

**Matt Millen's Playing Career**  
**1976** Big 33  
**1976-79** Penn State University  
**1979** First Team All-America  
**1980** Oakland Raiders  
**1980-88** Oakland/LA Raiders  
**1988** Pro Bowl  
**1989-90** San Francisco 49ers  
**1991** Washington Redskins

**Matt Millen's Broadcast Career**  
**1992-93** CBS Sports NFL Color Analyst  
**1994-00** NFL Color Analyst  
**1996-00** CBS Radio Sports Monday Night Football Color Analyst  
**1998-00** NFL Players, Inc. Radio Co-Host  
**2001-** President and CEO,  
**Present** Detroit Lions

**Presented By**  
  
**HIGHMARK BLUE SHIELD**  
An Independent Licensee of the Blue Cross and Blue Shield Association

**Sponsored By**  
 AAA  
 abc 27  
 Chi-Chi's  
 Mrs. T's Pierogies  
 PHEAA/AES  
 Sprint  
 Toyota  
 Waste Management  
 Waveline Direct  
 Westra Construction



**Matt Millen**  
 Honorary Chairman  
 1976 Big 33 Alumni



The Big 33 Scholarship Foundation's mission is to produce the premier high school all-star football game, in the United States, that is much more than a game that showcases and develops excellence in students and the community, and raises funds for academic scholarships and other charitable activities.

"The Super Bowl of High School Football"

**WRSC WBLF**

**news / sports / talk**

**1390 970**

## Speaking of Sports

with Jed Donahue, Jerry Fisher, and Phil Grosz  
Monday and Friday 5 to 7PM on WBLF - 6 to 7PM on WRSC

## Sportsline with Jeff Byers

Tuesday and Thursday 6 to 7 PM

## Nascar Live

Wednesday from 6 to 7PM

## Penn State Football Coverage

Live Broadcast Fridays from SBS

Saturday Football Jam/WRSC-WBLF Tailgate Party

Penn State Football Play-By-Play & Commentary

WRSC-WBLF Postgame Show

## High School Football Coverage This Fall

Lion Country Game of the Week on WBLF

# Central Pennsylvania Chapter The National Football Foundation and College Hall of Fame, Inc.

1423 North Atherton Street  
State College, PA 16803  
814-238-8474

## Honoring Central Pennsylvania 2003 - 2004 Scholar Athletes

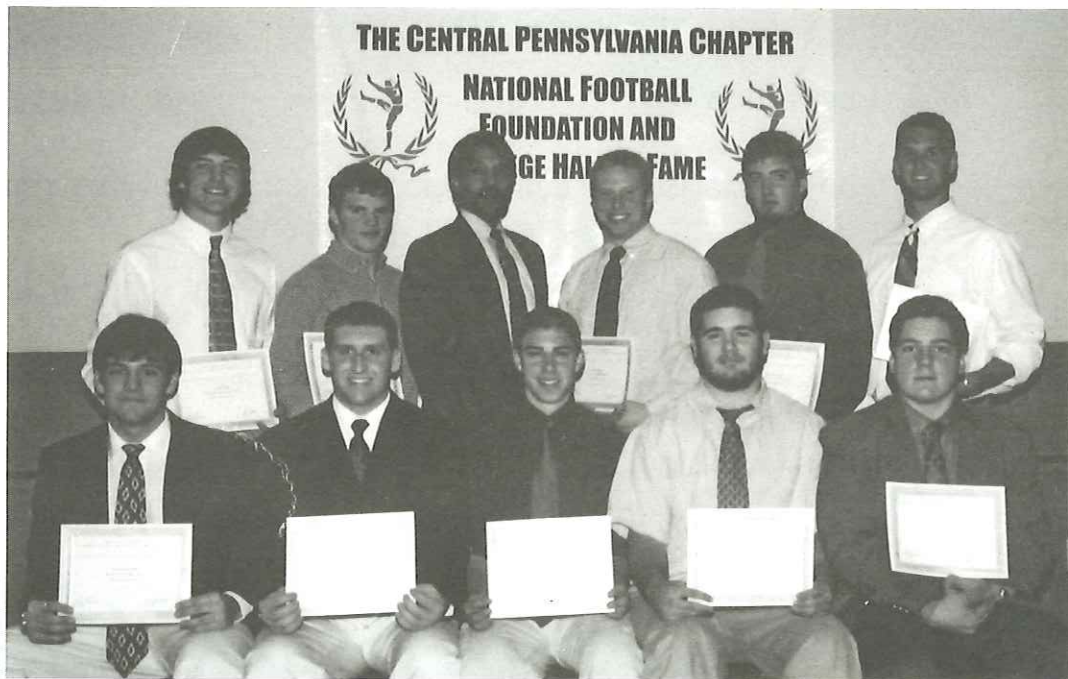
**President**  
Bill Asbury

**Vice President**  
John Freeman

**Secretary**  
Mark Sherburne

**Past Presidents**  
Ron Pavlechko  
Bill Berrier  
Ron Bracken  
Jerry Sandusky  
Tom Templeton

**Advisory Board**  
Darrell Alt  
Dick Anderson  
Jeff Anderson  
Jack Bailey  
Robert Forbes  
John Kulka  
Dan Leitzell  
Dave Lintal  
Jim Martin  
Bud O'Brien  
Lou Prato  
Ed Reutzel  
Phil Riccio  
Joe Sarra  
Jim Schnell  
Jerry Slagle  
Bob White



Front Row: (L to R)

Josh Mulhollem Altoona Area	Michael Surovec Bald Eagle Area	Tony Torsell Bellefonte Area	Kirk Hayes Brookville Area	Tyler Fida Ct. Mt.
--------------------------------	------------------------------------	---------------------------------	-------------------------------	-----------------------

**Honary Board**

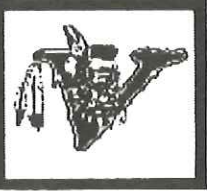
Tim Curley  
Ed Czekaj  
Pat Daugherty  
Bob Mitinger  
Dr. Dennis E. Murray  
Dennis Onkotz  
Joe Paterno  
Frank Rocco  
Jim Tarman  
L. Budd Thalman

Back Row: (L to R)

Geoff Kozak Huntingdon	Matt Shank Indian Valley	Harry Hamilton Guest Speaker	Zach Swartz Juniata Area	Matt Vonada Penns Valley	Kevin Suhey State College
---------------------------	-----------------------------	---------------------------------	-----------------------------	-----------------------------	------------------------------



# Indian Valley Warrior Football



**#33 Lucas Stewart**

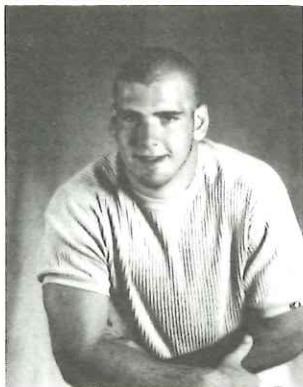


**#98 George Watson**

Congratulations Lucas & George on being selected to the  
2003 Lezzer Lumber Classic.

Good Luck! Indian Valley Booster Club

## *The Southern Huntingdon Football Boosters Club*

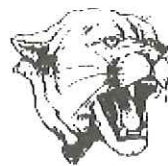


**#40 Chris Bilger**



**#17 Corey Doyle**

## LEWISTOWN FOOTBALL



and



## THE PANTHER CLUB



**#45 Jonathon  
Baker**

wish



**#82 Jared Dyer**

Good Luck!

# SCHOLARSHIP WINNERS

## 1985 North & South

Bryon Comly, Bellefonte Area  
Chris Davis, Hollidaysburg  
Kevin Shaw, Philipsburg-Osceola  
Greg Ferner, Tyrone  
Lester Smeal, West Branch  
Tom Franco, Bishop Guilfoyle

## 1986 North & South

Jacque DeMatteo, Clearfield  
Adam Claar, Bellwood-Antis  
Brian Dimmick, Curwensville  
Rich Dodson, Hollidaysburg  
Rob Ewing, Penns Valley  
Scott Kerr, Claysburg-Kimmel  
Marc McMullin, Bellefonte Area  
Craig Sellers, Huntingdon  
Tim Shirey, Philipsburg-Osceola  
Shawn Wesner, Bishop Guilfoyle

## 1987 North & South

Cary Dimmick, Bellefonte Area  
Mark Chamberlain, Huntingdon  
Dave Boal, Penns Valley  
Mark Smith, Southern Huntingdon  
Dave Eisenhooth, Bald Eagle Area  
Bill Weyandt, Altoona  
Terry Powers, Philipsburg-Osceola  
Rich Lang, Glendale

## 1988 North & South

David Domico, Curwensville  
Mike Burket, Huntingdon  
Aaron Gustkey, Philipsburg-Osceola  
Jerry DeLucia, Moshannon Valley  
Don Mansfield, Lock Haven  
Newt Holobinko, Altoona

## 1989 North & South

Steve Dorman, Bald Eagle Area  
Jim Foster, Juniata Valley  
Phil Lowry, Bellefonte Area  
Dale Frank, Hollidaysburg  
Doug Stratton, Philipsburg-Osceola  
James Garver, Claysburg-Kimmel

## 1990 North & South

Jason Clark, DuBois  
Jamie Brumbaugh, Mt. Union  
Fred Ironside, Penns Valley  
Doug Claycomb, Claysburg-Kimmel  
Mike Weaver, Bellefonte Area  
Steve Mock, Williamsburg

## 1991 North & South

George Tirch, Bald Eagle Area  
Aaron Crilly, Central  
Nelson Tressler, Bellefonte Area  
Shawn Leslie, Claysburg-Kimmel  
Chuck Zannino, Lewistown  
Brian Long, Hollidaysburg

## 1992 North & South

Bob McCaffrey, Penns Valley  
Rob Closson, Altoona  
Bob Selfridge, Clearfield  
Jason Long, Central

## 1993 North & South

Mike Love, Clearfield  
Jim Rivello, Juniata Valley  
Corby Lucas, Penns Valley  
Don Peterson, Tyrone

## 1994 North & South

Chris Achuff, Bellefonte Area  
DJ Sentman, Mount Union  
Todd Beers, DuBois  
Scott Noerr, Punxsutawney

## 1995 North & South

Jeff Wetzler, Bellefonte Area  
Shawn Hoyer, Hollidaysburg  
Hayes Bickle, West Branch  
Andy Krider, Central  
Steve Hill, Bald Eagle Nittany  
Chris Fultz, Indian Valley

## 1996 North & South

Brad Wood, Philipsburg-Osceola  
Greg Kennis, DuBois  
Nate Glunt, Curwensville  
Jeff Bowers, Bald Eagle Nittany  
Jacob Steinbugl, Altoona  
Bill Gunnett, Williamsburg  
Ron Schlecht, Hollidaysburg  
Ryan Wolfkiel, Indian Valley

## 1997 North & South

Mark Hagen, State College  
Kyle Hubler, West Branch  
Paul McClellan, Glendale  
Bill Raab, Moshannon Valley  
Ray Rosenberry, Southern Huntingdon  
Trevore Broadbent, Juniata Valley  
Mike Hoover, Williamsburg  
Matt Lehman, Central

## 1998 North & South

Shawn Hanzely, DuBois Area  
David Mottin, Bald Eagle Area  
Shawn Passmore, Moshannon Valley  
Chris Roser-Jones, State College  
Brent Hescox, Bellwood-Antis  
Chris Hileman, Claysburg-Kimmel  
Drew Onkst, Bishop Guilfoyle  
Ryan French, Lewistown Area

## 1999 North & South

Matt Lintal, State College  
Rob Confer  
B.J. Batterson  
Jeff O'Link, Clearfield  
Josh Tkacik, Curwensville  
William Bishop Jr., Punxsutawney  
Matt Deamer, Indian Valley  
Albert Hammers, Tyrone  
J.P. Matychak, Altoona  
Andy Hostler, Bellwood-Antis

## 2000 North & South

Joe Luther, Glendale  
Eric Bressler, Curwensville  
Andy Rehing, State College  
Derek Tyson, Penns Valley  
Paul Kozak, Huntingdon  
Adam Hicks, Mount Union  
Tyler Piper, Hollidaysburg  
Matt Sell, Claysburg-Kimmel

## 2001 North & South

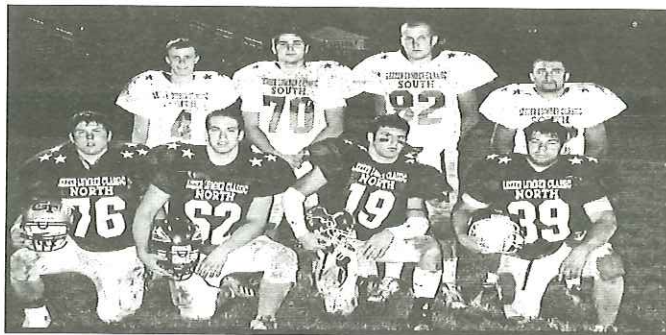
Kris Albright, Moshannon Valley  
Ricky Williamson, State College  
TC Curry, Curwensville  
Justin Todd, State College  
Joe Lehner, Tyrone  
Brandon Goshorn, South. Huntingdon  
Alex Dimoff, Mt. Union  
Troy Pincherri, Altoona

## 2002 North & South

Joshua Korb, Clearfield  
Ryan Bickle, West Branch  
Thomas J. Wulderk, Moshannon Valley  
Benjamin A. Miller, Central  
Tyler J. Otero, Lewistown  
Ben Gibboney, Huntingdon

## 2003 North & South

Kory Blose, Punxsutawney  
Nicholas G. Yocum, State College  
Christopher T. Swab, Brookville  
Cory Daniel Bailor, Curwensville  
Dmetri Patitsas, Huntingdon  
Drew Aurand, Mt. Union  
Chris Buchanan, Altoona  
Tom Forr, Bishop Guilfoyle



Above: 2003 Scholarship Winners: Front row (l to r) 76, Cory Bailor; 62, Chris Swab; 19, Nic Yocum; 39 Kory Blose. Second row (l to r) 4, Tom Forr; 70 Dmetri Patitsas; 82 Chris Buchanan; 22 Drew Aurand.

Left: 2003 Classic MVP s, 72 Jon Altemus; 10 Dave Richards; 6 Brendan Perretta; 11 Matt Davis

# CPFCA CLASSIC COACHING STAFFS

Year	Team	Head Coach	Assistant Coaches	Year	Team	Head Coach	Assistant Coaches
1985	North	Don Folmar, Philipsburg-Osceola	J. Gawen Stoker, Bald Eagle Area Dick Cummings, Lewistown Jack Bailey, Philipsburg-Osceola Frank Pipik, Philipsburg-Osceola	1995	North	Tim Janocko, Clearfield	Todd Connor, Bald Eagle Nittany Mike Packer, Lock Haven Forrest Campman, Clearfield Jacque DeMatteo, Clearfield Jerry Moore, Clearfield
	South	John Hayes, Bellwood-Antis	Vince Nedimyer, Altoona Harold Price, Hollidaysburg Tom Irwin, Bishop Guilfoyle Pete Sellers, Huntingdon		South	Jeff Lingenfelter, Claysburg-Kimmel	Jack Krider, Central Harold Price, Hollidaysburg Monte Cowher, Claysburg-Kimmel Anthony Garver, Central Kent Sell, Claysburg-Kimmel
1986	North	J. Gawen Stoker, Bald Eagle Area	John Wetzler, Bellefonte Area Ken Achuff, Bellefonte Area Bob Myers, Bald Eagle Area Curt Heverly, Bald Eagle Area	1996	North	Howie Camberg, Moshannon Valley	Steve Gutoff, Philipsburg-Osceola Gary Hubler, West Branch Frank Beella, Moshannon Valley Jerry Delucia, Moshannon Valley Jeff Vroman, Moshannon Valley
	South	Harold Price, Hollidaysburg	John Hayes, Bellwood-Antis William Clouse, Juniata Valley Jack Krider, Central John Franco, Altoona		South	John Franco, Tyrone	Mike Burket, Huntingdon John Hayes, Bellwood-Antis John McDonald, Tyrone John Meredith, Tyrone Mark Woodring, Tyrone Bob Young, Bucktail Gary Hubler, West Branch
1987	North	John Wetzler, Bellefonte Area	Ron Pavlechko, State College Dick Bell, Bellefonte Area Ken Achuff, Bellefonte Area Tim Janocko, Clearfield	1997	North	Howie Camberg, Moshannon Valley	Ron Hoover, Bald Eagle Area Jerry Delucia, Moshannon Valley Jeff Vroman, Moshannon Valley Frank Baker, Southern Huntingdon Dave Baker, Williamsburg John McDonald, Tyrone Richard Hatch, Tyrone Willie Breen, Indian Valley
	South	William Clouse, Juniata Valley	Tom Miller, Tyrone Jack Krider, Central Tom Gibboney, Huntingdon Bob Rupert, Juniata Valley		South	John Franco, Tyrone	Tom Broeren, State College Chris Folmar, Curwensville Dave Lintal, State College Martin Tobias, Penns Valley Bill Wetzel, Curwensville
1988	North	Jack Bailey, Philipsburg-Osceola	Dan Decker, Bald Eagle Nittany Frank Pipik, Philipsburg-Osceola Mike Packer, Lock Haven Dick Wood, Philipsburg-Osceola Chuck Hoover, Tyrone	1998	North	Lyle Domico, Curwensville	Frank Baker, Southern Huntingdon Mike Culver, Lewistown Toby Mitchell, Huntingdon Craig Sellers, Huntingdon Mike Zinobile, Juniata Valley Mark Baney, State College John Cryder, State College Tom Sallade, State College Chris Weakland, State College
	South	Tom Irwin, Bishop Guilfoyle	Mark Montrella, Bishop Guilfoyle Howie Camberg, Moshannon Valley Denny Conlon, Bishop Guilfoyle		South	Jim Zauzig, Huntingdon	Ron Hoover, Bald Eagle Area Martin Tobias, Penns Valley Tom Gibboney, Huntingdon Jeff Glenn, Juniata Valley Jeff Lingenfelter, Claysburg-Kimmel John McDonald, Bishop Guilfoyle Mike Smith, Juniata Valley
1989	North	Gary Hubler, West Branch	Joe Lauver, Indian Valley Ed Williams, West Branch Bill Vroman, West Branch Joe Kovalcin, West Branch	1999	North	Dave Lintal, State College	Tom Shaffer, Bald Eagle Nittany Mike Shenkle, DuBois William Vroman, West Branch John Franco, Altoona
	South	John Hayes, Bellwood-Antis	Tom Gibboney, Huntingdon Chet Dillen, Bellwood-Antis John Franco, Altoona Bill Crowell, Bellwood-Antis		South	Mike Zinobile, Juniata Valley	Tom Shaffer, Bald Eagle Nittany Mike Shenkle, DuBois William Vroman, West Branch John Franco, Altoona Tom Gibboney, Huntingdon Jeff Lingenfelter, Claysburg-Kimmel Harold Price, Hollidaysburg
1990	North	Tim Janocko, Clearfield	Forrest Campman, Clearfield Mike Flickinger, Penns Valley Mike Packer, Lock Haven Jerry Moore, Clearfield	2000	North	Tom Gravish, Bellefonte Area	Don Lucas, Penns Valley Mike Packer, Lock Haven Ron Pavlechko, State College Howie Camberg, Moshannon Valley Gary Garzoni, Punxsutawney Alan Hartman, Mount Union
	South	Alan Hartman, Mount Union	William Clouse, Juniata Valley David Hummel, Mount Union Rick Wilson, Mount Union		South	John Barton, Hollidaysburg	Steve Turchetta, Central Mountain Tom Shafer, Central Mountain JP Hanna, Central Mountain Tom Gravish, Bellefonte Area John Kutz, Glendale Frank Baker, Southern Huntingdon Ron Walters, Penn Cambria Jay Baker, Penn Cambria Jim Georgina, Penn Cambria John McDonald, Bishop Guilfoyle
1991	North	Dan Decker, Bald Eagle Nittany	Jess Long, Bald Eagle Nittany Tom Shaffer, Bald Eagle Nittany Mike Shenkle, DuBois William Vroman, West Branch	2001	North	Mike Packer, Central Mountain	John McDonald, Bishop Guilfoyle Mike Smith, Juniata Valley Tim Janocko, Clearfield Herm Wertz, DuBois Chris Dworek, Brookville Mike Turner, Bellefonte Area Ron Iadarola, Bellefonte Area Jim Zauzig, Huntingdon Andy Walter, Hollidaysburg Paul Yakymac, Hollidaysburg Mike Hudy, Huntingdon Toby Mitchell, Huntingdon
	South	Jack Krider, Central	Tom Gibboney, Huntingdon Jeff Lingenfelter, Claysburg-Kimmel Harold Price, Hollidaysburg		South	Dave Baker, Williamsburg	Tom Shafer, Central Mountain JP Hanna, Central Mountain Tom Gravish, Bellefonte Area John Kutz, Glendale Frank Baker, Southern Huntingdon Ron Walters, Penn Cambria Jay Baker, Penn Cambria Jim Georgina, Penn Cambria John McDonald, Bishop Guilfoyle
1992	North	Mike Flickinger, Penns Valley	Don Hosterman, Penns Valley Don Lucas, Penns Valley Mike Packer, Lock Haven Ron Pavlechko, State College	2002	North	Tim Janocko, Clearfield	Nate Glunt, Clearfield Dave Domico, Clearfield Gary Hubler, West Branch Curt Heverly, Bald Eagle Area Todd Consiglio, Altoona Rock DePiro, Altoona Todd Hooper, Altoona Nick Mineilli, Altoona Tom Gibboney, Huntingdon Mike Rakovan, Brookville Doug Davis, Brookville
	South	Gary Juart, Punxsutawney	Howie Camberg, Moshannon Valley Gary Garzoni, Punxsutawney Alan Hartman, Mount Union Bob Dwyer, Lock Haven		South	Phil Riccio, Altoona	Tom Gravish, Bellefonte Jeff Vroman, Philipsburg-Osceola John Kutz, Glendale Chris Elliott, Bishop Guilfoyle John Franco, Tyrone Gawen Stoker, Indian Valley John Barton, Hollidaysburg Fred Foster, Southern Huntingdon
1993	North	Mike Packer, Lock Haven	Mike Flickinger, Penns Valley John Englert, Lock Haven J.P. Hannah, Lock Haven Bob Shinskie, Lewistown	2003	North	Chris Dworek, Brookville	Tom Gibboney, Huntingdon Doug Davis, Brookville Tom Gravish, Bellefonte Jeff Vroman, Philipsburg-Osceola John Kutz, Glendale Chris Elliott, Bishop Guilfoyle John Franco, Tyrone Gawen Stoker, Indian Valley John Barton, Hollidaysburg Fred Foster, Southern Huntingdon
	South	John Franco, Altoona	Dan Bender, Altoona Tom Gibboney, Huntingdon Tom Bussman, Altoona Jack Krider, Central Rick Hatch, Altoona John Knopick, Punxsutawney		South	Tom Irwin, Bishop Guilfoyle	Tom Gibboney, Huntingdon Doug Davis, Brookville Tom Gravish, Bellefonte Jeff Vroman, Philipsburg-Osceola John Kutz, Glendale Chris Elliott, Bishop Guilfoyle John Franco, Tyrone Gawen Stoker, Indian Valley John Barton, Hollidaysburg Fred Foster, Southern Huntingdon
1994	North	Herm Wertz, DuBois	Tim Janocko, Clearfield Rod Smith, DuBois Jeff Vizza, DuBois	2003	North	Chris Dworek, Brookville	Tom Gibboney, Huntingdon Doug Davis, Brookville Tom Gravish, Bellefonte Jeff Vroman, Philipsburg-Osceola John Kutz, Glendale Chris Elliott, Bishop Guilfoyle John Franco, Tyrone Gawen Stoker, Indian Valley John Barton, Hollidaysburg Fred Foster, Southern Huntingdon
	South	Alan Hartman, Mount Union	Dave Baker, Williamsburg Mark Conner, Lewistown Dave Hummel, Mount Union Bob Shinskie, Lewistown Rick Wilson, Mount Union		South	Tom Irwin, Bishop Guilfoyle	Tom Gibboney, Huntingdon Doug Davis, Brookville Tom Gravish, Bellefonte Jeff Vroman, Philipsburg-Osceola John Kutz, Glendale Chris Elliott, Bishop Guilfoyle John Franco, Tyrone Gawen Stoker, Indian Valley John Barton, Hollidaysburg Fred Foster, Southern Huntingdon

**RALPH SPEARLY CONTRACTING, INC.**  
**513 KRISTINA CIRCLE • STATE COLLEGE, PA 16803**

NEW HOMES • ROOFING • SIDING • CONCRETE  
 PATIOS • DECKS • KITCHENS • BATHROOMS • REC. ROOMS  
 PLUMBING • ELECTRICAL

**PHONE: (814) 231-2325**

**RALPH L. SPEARLY**

## BALFOUR - "CHOICE OF CHAMPIONS"



FOR YEARS **BALFOUR** HAS ENJOYED THE PRIVILEGE OF PRODUCING CHAMPIONSHIP RINGS FOR WINNING TEAMS OF SUPER BOWLS, WORLD SERIES, STANLEY CUPS AND MORE. CHAMPIONSHIP PLAYERS HAVE CHOSEN **BALFOUR** RINGS TO SYMBOLIZE THEIR ULTIMATE VICTORY. CHAMPIONS LIKE YOU CAN DO THE SAME BY SELECTING A *BALFOUR CUSTOM CLASS RING* - MADE BY THE VERY CRAFTSMEN WHO CREATE RINGS FOR WORLD CHAMPION ATHLETES.

### *LOCAL CHAMPIONSHIP TEAMS WITH BALFOUR RINGS:*

2003 STATE COLLEGE H.S. BASKETBALL STATE CHAMPIONS

2003 ATLOONA H.S. FOOTBALL REGIONAL CHAMPIONS

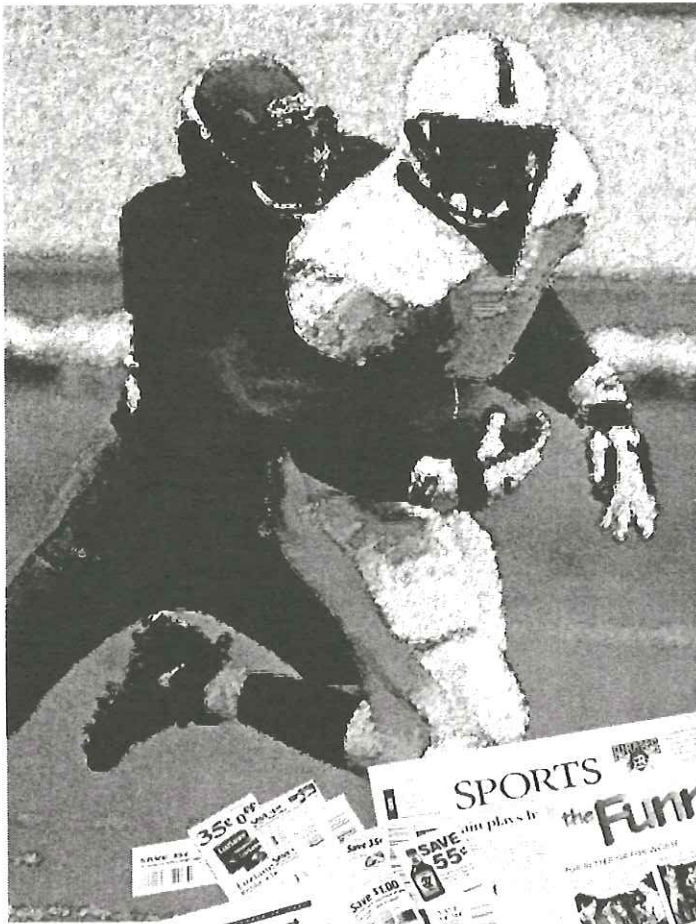
2003 FOREST HILLS H.S. FOOTBALL REGIONAL CHAMPIONS

1999 BALD EAGLE AREA H.S. WRESTLING TEAM CHAMPIONS

1982 & 1983 PENN STATE FOOTBALL NATIONAL CHAMPIONS

1998 PENN STATE HOCKEY NATIONAL CHAMPIONS

**LARRY SUHEY**  
814-237-3860  
P.O. Box 845  
LEMONT, PA 16851



# Your source for local sports



- High School and PSU Sports
- CDT Best Deal Classifieds
- CareerBuilder.com
- Local News
- Comics
- Sunday Living
- Coupons
- Parade Magazine
- Real Estate
- CDTV

—Pennsylvania's "Newspaper of the Year"—

Your Life. Your Paper.  
**CENTRE  
DAILY TIMES**

[www.centredaily.com](http://www.centredaily.com)

To subscribe, please call  
**1-888-237-3801**



**Easy Pay Club**



# CLASSIC GAME RECORDS

1985 — South 14-13  
 1986 — North 29-20  
 1987 — South 23-21  
 1988 — South 28-13  
 1989 — North 12-3

1990 — North 31-22  
 1991 — South 7-3  
 1992 — North 7-6  
 1993 — South 15-3  
 1994 — South 18-7

1995 — North 39-26  
 1996 — South 23-21  
 1997 — North 20-7  
 1998 — North 21-7  
 1999 — North 34-18

2000 — North 20-6  
 2001 — South 34-10  
 2002 — South 34-19  
 2003 — South 17-14

*South leads series 10-9*

## TEAM OFFENSE

### Most Points

39 — 1995 North

### Yards Rushing

260 — 1998 South

### Yards Passing

374 — 1990 North

### Total Offense

441 — 1990 North

## TEAM DEFENSE

### Least Points Allowed

3 — 1989 North  
 3 — 1991 South  
 3 — 1993 South

### Least Yards Rushing

22 — 1993 South

### Least Total Offense

120 — 1994 South

### Most Take Aways

7 — 1995 North  
 7 — 2000 North

### Fumble Recoveries

4 — 2000 North

### Interceptions

5 — 1996 South

## INDIVIDUAL OFFENSE

### 100+ Yards Rushing

180 — 2001 Jones (TYRONE)  
 172 — 1988 Koehle (BG)  
 144 — 1999 Brindle (HUNT)  
 112 — 2003 Richards (CLFD)  
 102 — 1986 Hesketh (KISH)

### TD / Rushing

3 — 1988 Koehle (BG)

### Longest Rushing TD

77 — 2001 Jones (TYRONE)  
 75 — 1999 Brindle (HUNT)

### Most Points

18 — 1988 Koehle (BG)  
 18 — 1999 Brindle (HUNT)

### 300+ Passing

318 — 1990 Graham (CLFD)

### 200+ Passing

206 — 1995 Kroell (CLFD)

### TD Passes

3 — 1990 Graham (CLFD)  
 3 — 1995 Kroell (CLFD)

### Passes Completed

14 — 1990 Graham (CLFD)

### 100+ Receiving

162 — 2000 Fedeli (ALT)  
 145 — 1990 Ironside (PV)  
 124 — 2003 Perretta (ALT)  
 103 — 1995 Gibson (CLFD)

## INDIVIDUAL DEFENSE

### Fumble Recoveries

2 — 2000 Nagle (BEA)

### Interceptions

3 — 1988 Cheslock (ALT)  
 3 — 1996 Evans (HUNT)

### Fumble Return / TD

46 — 1999 Thompson (BEA)

### Interception Return TD

30 — 1996 Rhoades (ALT)

### Sacks

5.5 — 1992 Carper (PV)

### Tackles

10 — 1990 Hardy (BLFT)

## INDIVIDUAL KICKING

### Most Points

10 — 1994 Snyder (Mt.U)

### Field Goals

3 — 1994 Snyder (Mt.U)

### Longest Field Goal

53 — 2000 Kimball (SC)

### Punting Average

45 — 2000 Condo (P-O)

### Longest Punt

80 — 2000 Condo (P-O)

### Kickoff Return TD

None

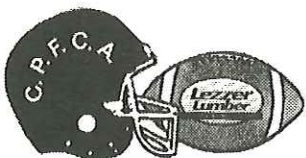
### Longest Punt Return TD

81 — 1996 Hostler (B-A)

## JACK BAILEY

*Game Director*  
 106 Curtis Street  
 Philipsburg, PA 16866

Home-814-342-6496  
 FAX -814-342-4878



# Hollidaysburg Area Golden Tigers Booster Club Congratulates

**G  
o  
o  
d  
L  
u  
c  
k  
  
G  
o  
l  
d  
e  
n  
T  
i  
g  
e  
r  
s**

**H  
o  
l  
l  
i  
d  
a  
y  
s  
b  
u  
r  
g  
  
B  
o  
o  
s  
t  
e  
r  
s**



**#20 Corey Gildea**



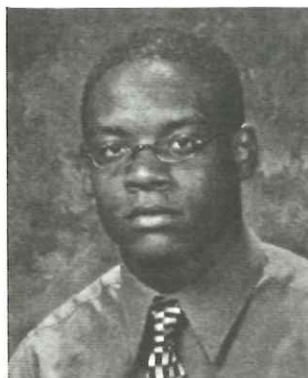
**#64 Tyler Moyer**



**#32 Gifford Piper**



**#34 Andy Pugh**



**#1 Jarvis Reeves**

**District VI AAAA Champions 85 89 90 95 99  
48 Big 8 Champions 73  
Allegheny Conference Champions 94**

**Western Conference Champions  
65 67 82 85 88 89 90  
Central Counties Conference Champions  
56 73 74 75 78 81 82 85**

# CENTRAL PENNSYLVANIA FOOTBALL COACHES ASSOCIATION SALUTES THEIR OUTSTANDING TEAMS AND COACHES



**Dave Lintal**  
State College  
District VI AAAA Champs  
Western Finalist  
North --Coach of the Year



**John Franco**  
Tyrone  
District VI AA Champs



**Jim Zauzig**  
Huntingdon  
District VI AAA Champs  
South--Coach of the Year

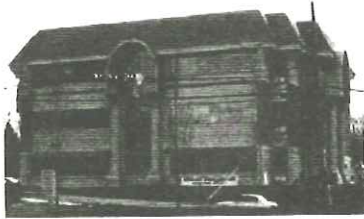


**Tim Janocko**  
Clearfield  
President PSFCA

<u>YEAR</u>	<u>AAAA DISTRICT VI</u>	<u>AAAA DISTRICT IX</u>
1985	*HOLLIDAYSBURG	
1986	JOHNSTOWN VT	
1987	*STATE COLLEGE	
1988	*ALTOONA	
1989	*HOLLIDAYSBURG	
1990	*HOLLIDAYSBURG	*PUNXSUTAWNEY
1991	*STATE COLLEGE	*DUBOIS
1992	*STATE COLLEGE	*DUBOIS
1993	*HOLLIDAYSBURG	*CLEARFIELD
1994	*STATE COLLEGE	*DUBOIS
1995	*HOLLIDAYSBURG	
	<u>DISTRICT VI &amp; IX</u>	
1996	*ALTOONA	
1997	*ALTOONA	
1998	*STATE COLLEGE	
1999	*HOLLIDAYSBURG	
2000	*ALTOONA	
2001	*ALTOONA	
2002	*ALTOONA	
2003	*STATE COLLEGE	
	<u>DISTRICT V &amp; VI</u>	
1996	*TYRONE	
1997	*TYRONE	
1998		
1999	*TYRONE	
2000	*TYRONE	
2003	*TYRONE	

<u>YEAR</u>	<u>AAA DISTRICT VI</u>	<u>AAA DISTRICT IX</u>
1985	FOREST HILLS	
1986	*HUNTINGDON	
1987	*TYRONE	
1988	*BALD EAGLE AREA	
1989	*BELLEFONTE AREA	
1990	*CENTRAL	
1991	*LOCK HAVEN	
1992	*LOCK HAVEN	
1993	*LOCK HAVEN	
1994	*LOCK HAVEN	
1995	CENTRAL CAMBRIA	
	<u>DISTRICT VI &amp; IX</u>	
1996	*LOCK HAVEN	
1997	*HUNTINGDON	
1998	*HUNTINGDON	
1999	*BELLEFONTE AREA	*CLEARFIELD
2000	BRADFORD	*CLEARFIELD
2001	*HUNTINGDON	BRADFORD
2002	*INDIAN VALLEY	*CLEARFIELD
2003	*HUNTINGDON	
	<u>DISTRICT V &amp; VI</u>	
1996	*MOSHANNON VALLEY	
1997	*BELLWOOD-ANTIS	
1998		
1999		
2000		*CURWENSVILLE

\*Indicates CPFCA member



# Locations

## Williamsport

3580 W. 4th Street  
Williamsport, PA 17701  
Ph: 570-323-9889  
Chris McKeown- Manager

## State College

2350 E. College Avenue  
State College, PA 16801  
814-237-3511  
Ken Kelley- Project Manager  
Tracy Cornwell- Project Manager

## Curwensville

75 Cooper Rd.  
Curwensville, PA 16833  
814-236-7434  
Ken Peters- Project Manager



Lezzer Commercial Door is staffed with a UL fire rated shop. Builders needing commercial door units can find it all at Lezzer Commercial Door. With shops in State College, and Williamsport we can provide contractors with project estimates and detailing, Write door and hardware specifications for architects and provide quality installation for your building needs. All locations have an abundant inventory in stock. Lezzer Commercial Door has availability to all major hardware lines and can also supply you with quality washroom accessories and toilet partitions.

**Lezzer Commercial Door Washroom Accessories and Toilet Partitions:**  
A.S.I., A.I. Washroom, Bobrick, Franklin, Frost, Santana, General Partitions, Knickerbocker.



[www.lezzerlumber.com](http://www.lezzerlumber.com)

