



MANSION PARK ALTOONA PA

JUNE 24, 2000

# CLASSIC XV

CENTRAL PENNSYLVANIA

FOOTBALL COACHES  
ASSOCIATION

CO-SPONSORED BY



CONVENIENCE MARKET

CENTRE DAILY TIMES

NEWSRADIO

1390 AM 970 AM

WRSC~WBLF

Your News & Sports Leader in Lion Country!





**Convenience Market**

**OPEN DAILY  
24 HOURS!**



★ Fresh Pastries    ★ Fresh Bagels    ★ Subway Subs

**With Locations At:**

- ★ 1209 North Atherton Street, State College • 235-1970
- ★ Intersection of Rts. 350 and 220 in Bald Eagle • 684-5240
- ★ Intersection of Rts. 45 and 144 in Centre Hall • 364-9389



# LEZZER LUMBER CLASSIC 2000

## Table of Contents

Snappy's Ad	Inside Cover	Patrons	13	Huntingdon Booster Club Ad	26	Demans Sports Ad	40
President's Message	1	Classic Financial Statement	13	Where are They Now?	27	Business Card Ads	40
2000 Hall of Fame Inductees	1	Central Mountain Booster Club Ad	14	Don Joy Athletic Supplies Ad	28	Southern Huntingdon Booster Club Ad	41
State College Area Booster Club Ad	2	North Squad	15	University Orthopedics Ad	29	Business Card Ads	41
MVP's and Classic Summaries	3	North Squad	16	Pennsylvania Football News Ad	29	1999 CPFCA Coaches of the Year	42
1999 Centre Daily Times Classic write-up	4	Bald Eagle Area Booster Club Ad	17	Bellwood-Antis Booster Club Ad	30	1999 Lezzer Classic Award Winner's Photos	42
Bellefonte Booster Club Ad	5	1990 Classic Players--North	18	South Squad	31	Classic Scholarship Winners	43
Player Selection Procedure	6	Business Card Ads	18	South Squad	32	Previous Coaching Staffs	44
Special Thanks	6	1990 Classic Players--South	19	Game Rules	33	Hall of Fame Inductees	45
All-Star History	7	Business Card Ads	19	Claysburg-Kimmel Booster Club Ad	33	Central Booster Club Ad	45
Philipsburg-Osceola Booster Clubs Ad	7	East Juniata Booster Club Ad	20	Jim's Sporting Goods Ad	33	WRSC/WBLF Ad	46
Penns Valley Booster Club Ad	8	2000 CPFCA Prospect Camp Photos	21	Tyrone Booster Club Ad	34	Bellefonte Area HS Cheerleaders Photo	47
Clearfield Booster Clubs Ad	9	Rutger-Organics Ad	21	Tyrone State Champions Team Photo	35	Holidaysburg HS Cheerleaders Photo	47
Moshannon Valley Booster Club Ad	9	Brookville Booster Club Ad	22	South Squad	36	Holidaysburg Booster Club Ad	48
DuBois Booster Club Ad	10	Curwensville Booster Club Ad	23	South Squad	37	District Champs	Inside Back Cover
North Squad	11	2000 North Roster	24	Big 33 Ad	38	Lezzer Lumber Ad	Back Cover
North Squad	12	2000 South Roster	25	Centre Daily Times Ad	39		

## PRESIDENT'S MESSAGE

On behalf of the Altoona Area School District and the Allegheny Mountains Convention and Visitors Bureau, I would like to welcome you to Mansion Park Stadium, one of the premier athletic complexes in Pennsylvania, for the 16<sup>th</sup> annual Lezzer Lumber Classic football game.

Thanks to generous contributions from our sponsors, especially Lezzer Lumber, the Central Pennsylvania Football Coaches Association has been able to award more than 100 scholarships in excess of \$50,000 to players.

I am certain you'll enjoy watching the outstanding athletes who will be playing their final high school football game tonight. The Classic is regarded as one of the finest all-star football games in the Commonwealth. Friendships made here in Altoona this week will last for a lifetime.

The effort put forth by CPFCA members, especially game director Jack Bailey and secretary/treasurer Rob Irwin, is much appreciated. I would personally like to thank these hard-working people, as well as all of our sponsors, for making this Classic such a great success.

Thank you for attending tonight's game!

Phil Riccio  
2000 CPFCA President  
Head Coach, Altoona High School

### 2000 CPFCA OFFICERS

**President** - Phil Riccio, Altoona  
**Vice-President** - Tom Gravis, Bellefonte Area

**Secretary/Treasurer** - Rob Irwin, Bellefonte Area  
**Game Director** - Jack Bailey, Philipsburg-Osceola

## CENTRAL PENNSYLVANIA COACHES ASSOCIATION 2000 COACHES HALL OF FAME INDUCTEES

### Alan Hartman, Mount Union High School

Alan coached at Mt. Union for 23 years, thirteen as the Head Coach. His outstanding Trojan teams lost in the Class AA District VI finals in 1989, 1992, and 1993. Served as the South's Head Coach in 1990 and 1994 and as an Assistant Coach in 1992.

### Pete Sellers, Huntingdon High School

Pete was one of the original founding coaches of the Central Pennsylvania Football Coaches' Association and served as Association President in 1984-85. Long-time assistant and Head Coach at Huntingdon where his "Bearcats" captured the 1980 Big 8 Championship. Assistant Coach for the South in 1985.

### DISTINGUISHED COACHES FROM CPFCA SCHOOLS BEING INDUCTED TONIGHT

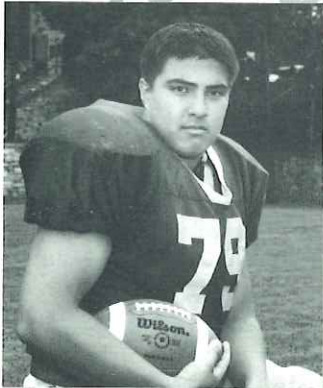


**ALAN HARTMAN**  
Mt. Union

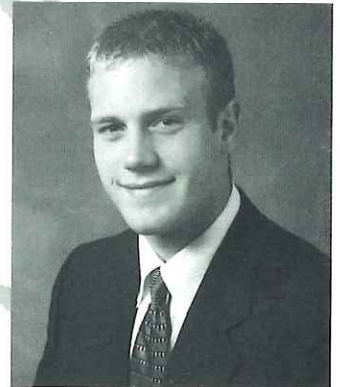


**PETE SELLERS**  
Huntingdon

# The State College Football Booster Club Congratulates



#79 John Caldwell



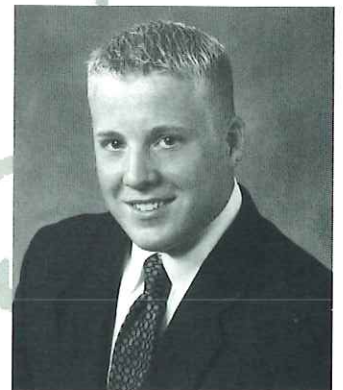
#2 Mike Drenning



#1 Tony Johnson



#32 Dave Kimball



#76 Andy Rehring

on their selection to the  
**Lezzer Lumber Classic** and wishes  
them the best of luck in the future.



# Mid-State, Uni-Mart, and Lezzer Lumber Classic Summaries

<u>Most Valuable Performance</u>				<u>Most Valuable Performance</u>			
<u>Year</u>	<u>Score</u>	<u>Offense</u>	<u>Defense</u>	<u>Year</u>	<u>Score</u>	<u>Offense</u>	<u>Defense</u>
1985	South14 North13	Joe Irwin <i>Bishop Guilfoyle</i> Keith Powell <i>Philipsburg-Osceola</i>	George Zlupko <i>Altoona</i> Bill Andrus <i>Bellefonte Area</i>	1993	South15 North 5	Ferdie Vaughn <i>Mount Union</i> Jeff Nixon <i>State College</i>	Norm Huddy <i>Punxsutawney</i> Shanon Manning <i>Penns Valley</i>
1986	North29 South20	Bill Hesketh <i>Kishacoquillas</i> John Carey <i>Bishop Guilfoyle</i>	Bob Shea <i>Curwensville</i> Craig Sellers <i>Huntingdon</i>	1994	South18 North 7	Tom Snyder <i>Mount Union</i> Brandon Knarr <i>Lock Haven</i>	Dave Berkhimer <i>Claysburg-Kimmel</i> Joe Frank <i>Philipsburg-Osceola</i>
1987	South23 North21	Rick Hoover <i>Altoona</i> Doug Sieg <i>Bellefonte Area</i>	Cord Ferrari <i>Huntingdon</i> Tom Bowser <i>State College</i>	1995	North39 South26	Chad Kroell <i>Clearfield</i> Wes Green <i>Huntingdon</i>	Scott Latosky <i>Moshannon Valley</i> Jason Showwalter <i>Juniata Valley</i>
1988	South28 North13	Matt Koehle <i>Bishop Guilfoyle</i> Tim Fritz <i>Lock Haven</i>	Mike Cheslock <i>Altoona</i> Brent Dunmire <i>Lewistown</i>	1996	South23 North21	Ryan Hostler <i>Bellwood-Antis</i> Tim Kail <i>DuBois</i>	Jason Evans <i>Huntingdon</i> Mike Kemmerer <i>Bald Eagle Nittany</i>
1989	North12 South 3	Jim Renninger <i>Bald Eagle Nittany</i> Dave Hensor <i>Juniata Valley</i>	Bob Oakes <i>State College</i> Mike Koehle <i>Bishop Guilfoyle</i>	1997	North 20 South 8	Eric Kaufman <i>Clearfield</i> J.J. Easter <i>Mount Union</i>	Justin Ditty <i>Bucktail</i> Jonathan Seiner <i>Tyrone</i>
1990	North31 South22	Bruce Graham <i>Clearfield</i> Dave Wyland <i>Hollidaysburg</i>	Todd Hardy <i>Bellefonte Area</i> Lew Buddy Tress <i>Mount Union</i>	1998	North 21 South 7	Larry Johnson <i>State College</i> Josh Geis <i>Altoona</i>	Matt Maggs <i>Bald Eagle Nittany</i> Mathias Harmon <i>Central</i>
1991	South 7 North 3	Chris McCartney <i>Bellwood-Antis</i> Wade Kurzinger <i>Bald Eagle Area</i>	Eric Bernatsky <i>Purchase Line</i> Bill Stringfellow <i>Bald Eagle Nittany</i>	1999	North 34 South 18	Josh Tkacik <i>Curwensville</i> Chad Brindle <i>Huntingdon</i>	Ben Lago <i>Bald Eagle Area</i> Matt Deamer <i>Indian Valley</i>
1992	North 7 South 6	Don Gentzyl <i>Bucktail</i> Matt Kemmerer <i>Punxsutawney</i>	Brian Carper <i>Penns Valley</i> Karl Montanaro <i>Bellwood-Antis</i> Brett Rankin <i>Punxsutawney</i>				

## WE'RE PROUD OF YOU

### **UNCLE PHIL'S GENERAL STORE**

OPEN 5 A.M. TO 11 P.M. DAILY

P.O. BOX 94, 111 SUGAR STREET-FALLEN TIMBER, PA 16639  
814-687-3594 OR 1-888-UINC-PHIL

### **STORAGE BARNS AND GAZEBOS**

Oak & Hickory Rockers, Gun Cabinets, Chests, Hand-Carved Mirrors, Onits, Picnic Tables, Lounge Chairs, Swings, Bird Feeders, Chairs, Rockers, Settees, Benches, Sheds, Gazebos, Gifts, Food, Gasoline, Grocery ...and much more!



### **CENTRE COUNTY PRISON**

213 EAST HIGH STREET

BELLEFONTE, PA 16823

David L. Immel  
Warden

(814) 355 - 6794  
FAX (814) 355 - 6995  
E-mail: dlimmel@co.centre.pa.us



# “So much fun”

*The North’s players could afford to sport that attitude after cruising to a 34-18 win over the South.*

**By David Comer, Centre Daily Times**

**State College** – They said they just want to have fun. They said winning isn’t all that important. And they said that the game really doesn’t mean that much.

But when the 15<sup>th</sup> annual Lezzer Lumber Football Classic kicked off a couple minutes past 7 o’clock Saturday night all that changed. The players wanted nothing more than to walk off the field with a victory in their final high school football game.

“It’s a blast all week,” said North’s Jonathan Nabavi, a defensive lineman from State College Area High School. “It’s a lot of fun, but when it comes down to it you really want to win.”

Nabavi and the North, led by a contingent of fellow Centre Countians, did just that. They broke open a close game in the fourth quarter on their way to a 34-18 victory over the South squad.

The win was the third straight for the North and gave it a 8-7 lead in the all-time series. “This week is so much fun,” said North’s Ben Lago of Bald Eagle Area, who was voted the defensive most valuable player for his team. “When you’re on the field you know it’s serious and you want to win. When we had to dig down deep and make big plays that’s what we did.”

And how. After Chad Brindle of Huntingdon burst loose for a 75-yard touchdown run with 9:16 left in the game to pull the South within 22-18, the North didn’t need long to respond.

Eric Dare of State College retruned the ensuing kickoff 47 yards to the South 48, and nine plays later John Kelly of BEA darted in from the 23 to extend the North’s lead to 28-18.

Nabavi then snatched a Jon Collins screen pass out of the air and rumbled 25 yards for the clinching touchdown and a 34-18 lead. Lago, who promised earlier in the week that he would help Nabavi score his first high school touchdown, helped out with a crushing block on Brindle. “It was amazing,” Nabavi said. “It was just a crazy play.”

It was a crazy week, really. Forty players got together Monday morning and practiced for just five days. But during those five days they developed new friendships and what North head coach Dave Lintal likes to call a sense of team.

“It really feels great,” said Lintal of State High, who was still soaking wet from a Gatorade shower just minutes earlier. “I thought we really had a sense of team, and I’m really pleased with that. They’re buddies now. It’s so nice to see that, to see all the kids come together.”

The North players seemed truly were sad to see the game and week end. Now they must have the memories to hold onto, but there is no doubt they will try to forget a few things about the game. Like the first quarter.

Neil Gioiosa of Bishop Guilfoyle picked off a pass midway through the opening stanza and returned it 14 yards to the North 26. Four plays later, on a fourth-and-one from the 17, Brindle caught a play-action pass and rumbled into the end zone, but not before he ran over John Hanna.

And the South’s defense, led by its MVP Matt Deamer of Indian Valley, was holding the North offense in check.

But the North finally broke through in the second quarter in large part because of the accurate arm of quarterback Brandon McCliment of Philipsburg-Osceola Area High School. McCliment, who finished 6 of 7 for 73 yards and a score, hit Mike Vogt of Penns Valley with a 3-yard touchdown pass to make it 6-6.

“I was just thinking, “Catch it and stay in bounds,” Vogt said.

The pass, like all of the other ones from McCliment, was on target. “I felt good tonight,” McCliment said. “It’s funny because all week at practice I was trying to get in a groove, and tonight I did.”

The North converted a fake extra point – Hanna hit Matt Lintal in the corner of the end zone – to take an 8-6 lead.

Then Curtis Thompson of BEA picked up a fumble and returned it 46 yards for a North touchdown. Hanna added an extra point, and the North had a 15-6 lead at halftime.

Brindle, who carried the ball 14 times for 144 and two rushing touchdowns, capped off a 16-play, 83-yard drive with a 6-yard run to pull the South within 15-12 late in the third.

“He plays hard,” South head coach Mike Zinobile said of the 5-foot-19, 190-pound Brindle, who was voted his team’s offensive MVP. “He just loves the game and plays so hard. When he gets the ball good things happen.”

Lintal put it this way: “He’s a tough kid. Oh, boy, he’s a tough kid.” But on this night, Brindle couldn’t do it by himself. Whereas he was the South’s main weapon both running with the ball and catching it, the North used balance.

Josh Tkacik of Curwensville, who caught four passes for 98 yards and was named the offensive MVP for the North, made perhaps his biggest catch early in the fourth quarter. His team was staring at a fourth-and-15 from the South 25, but he helped bail it out with a leaping 2-yard grab from Dare that put the ball at the 1.

Kelly, who finished with eight carries for 65 yards, ran it in two plays later, and, after Hanna booted the PAT, the North had a 22-12 lead.

Brindle responded with that 75-yard scamper, but Kelly and Nabavi and the rest of the North came up big to preserve the victory. “It was just a great week,” Vogt said. “And to win is just the icing on the cake.”

## Lezzer Lumber Summary

North	34
South	18
South	6 0 6 6 18
North	0 15 7 12 34

## Scoring Summary

### First Quarter

South – Brindle 17 pass from Collins (kick blocked), 6:17

### Second Quarter

North – Vogt 3 pass from McCliment (Lintal pass from J. Hanna), 9:44

North – Thompson 46 fumble return (J. Hanna kick), 4:43

### Third Quarter

South – Brindle 6 run (kick failed), 3:01

### Fourth Quarter

North – Kelly 1 run (J. Hanna kick), 14:07

South – Brindle 75 run (kick failed), 9:16

North – Kelly 23 run (kick failed), 7:37

North – Nabavi 25 interception return (kick failed), 7:13

## Team Statistics

	South	North
First Downs	12	5
Rushes-yards	36-177	37-135
Passing yards	74	174
Passes	7-17-1	10-19-1
Punts	5-29.4	5-34.4
Fumbles-lost	4-2	3-1
Penalties-yards	1-5	3-36

## Individual Statistics

**RUSHING:** South – Chad Brindle 14-144, Brad Price 6-25, Jonathan Wasovich 5-9, Sebastian Smelko 3-(minus 15), Patrick Allison 2-1, Jon Collins 6-13; North – Eric Dare 2-7, Andrew Ryland 5-12, Andy Hull 8-19, John Kelly 8-65, Brandon McCliment 6-(minus 3), Jim Lewis 3-2, Ben Lago 1-13, Mike Maney 1-4, Josh Tkacik 1-(minus 3), John Hanna 2-19.

**PASSING:** South – Collins 5-10-62-1, Smelko 2-7-12-0; North – Dare 2-9-26-1, McCliment 6-7-73-0, Maney 1-1-30-0, J. Hanna 1-2-20-0.

**RECEIVING:** South – Brindle 2-27, Price 1-6, Chet Clark 3-24, Mike Gartman 1-17; North – Tkacik 4-98, Brian Hanna 2-33, Kelly 1-24, Mike Vogt 1-3, Kevin Valentine 1-7, Hull 1-4.

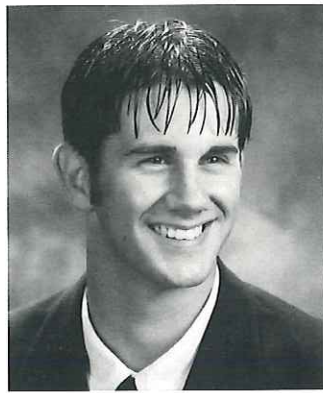




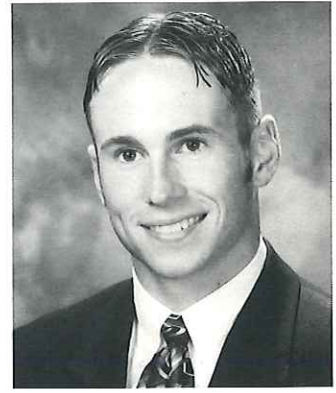
The Red Raider Coaching  
Staff  
and  
The Red Raider  
Booster Club  
Congratulates



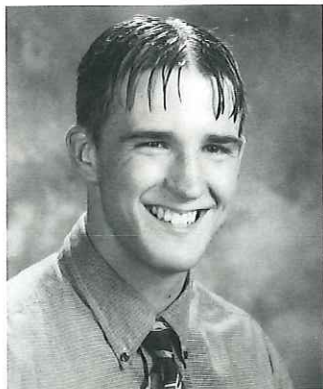
#75 Ward Butler



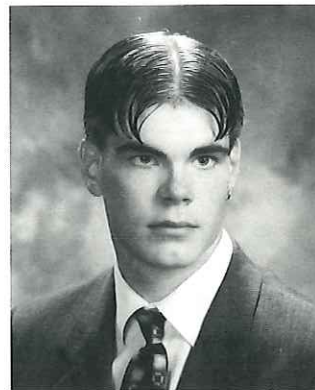
#23 Kris Glunt



#20 Tom McKee



#18 Ryan Poorman



#9 Bill Witmer

for being selected to participate in the  
Lezzer Lumber Classic

# PLAYER AND COACHES SELECTION

Players and coaches are selected for the game by members of the Central Pennsylvania Football Coaches Association. They require that a representative attend a minimum of three CPFCA meetings before a player is eligible. Players from schools failing to meet the minimum participation requirements are not eligible for the following year.

## Player Selection:

1. Graduating Senior players are nominated in writing by their head coach in December.
  - a. Each school may have no more than five players participate.
2. Players nominated are polled to ascertain that they will participate if selected.
3. Coaches from schools in each division review the nominated players and the forty players are selected by a consensus of the selection committees. (A player from each eligible school will be selected to participate in the game.)

## Coach Selection:

1. Members of the association select the coaching staff from member schools in each division -- North and South.
2. The coaching staffs for each division consist of a Head Coach and five Associate Coaches.



1999 Classic -- North sideline

## Special Thanks to These and Others Who Give Special Help

The Boards of Education, Administration, Facilities Maintenance, and Coaching Staffs at Bellefonte Area and Altoona Area

Al Crafts -- Professional Video Services

Lezzer Lumber and Building Materials Centers

Matt Leon & John Wetzler -- Radio/Video Play-by-Play

Grove Printing -- Bellefonte

Today's Referee Crew

Bellefonte & Altoona Pizza Huts

North Trainer, Scott DeVore -- for going the extra mile!



# A Classic History

Previous Central Pennsylvania All-Star Football games such as the 1960 Central Counties and the 1977-78 Lewistown Lion Club were "great football games," but were short lived.

In 1985, the Central Pennsylvania Football Coaches Association, with J. Gawen Stoker as the Game Director, initiated the Mid-State Classic under the corporate sponsorship of the Mid-State Bank. The game was established to promote scholastic football, to recognize excellence of our players and coaches, to provide a system of ongoing football education for our coaching staffs, and to fund a scholarship program. The first game involved players from twenty-five schools.

In 1993, Uni-Mart, Inc. became the major sponsor for the Classic with the CPFCA maintaining the football and organizational aspects of the game. Currently, there are thirty schools from District VI and IX involved in the game. To date, \$50,000 in the form of one hundred scholarships have been awarded to help young people continue their education. The CPFCA holds monthly mini-clinics for high school and youth coaches during the winter months. To the players and coaches, being selected to participate in the "Classic" is held in high regard. It would seem that the goals for the Classic are being realized. The degree to which the game and the CPFCA can work toward these goals will depend upon the support we continue to receive.

The Lezzer Lumber Classic is considered as one of the premiere all-star football games in Pennsylvania. It is a tribute to our sponsors and co-sponsors, to the individual players sponsors, the business card and patron sponsors, and to families and friends of scholastic football in the Central Pennsylvania region. Please patronize our supporters, and let them know that you appreciate their contributions to the Classic when you visit their businesses.

**YOU MAKE IT ALL WORK!**

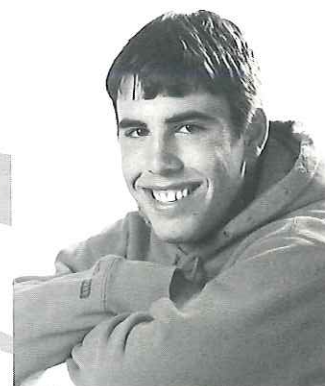
## WE'RE MOUNTIE PROUD OF



**#74 Jim  
Barnett**



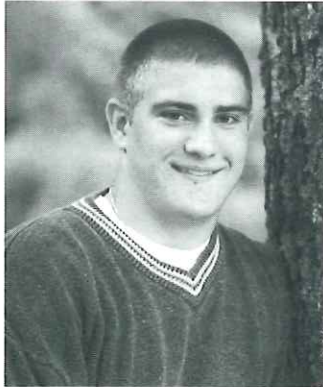
**#8 Jon Condo**



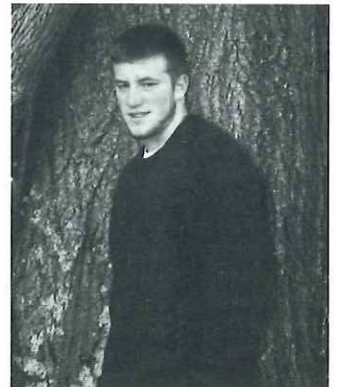
**#45 Cory Wood**

**Wishing continued success for the  
LEZZER LUMBER CLASSIC  
and Good Luck to the '00 MOUNTIES  
Compliments of the  
Philipsburg-Osceola Quarterback Booster Club**

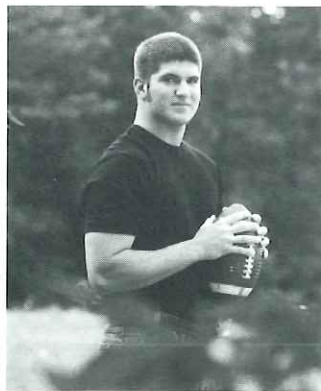
# The Penns Valley Athletic Booster Club Congratulates



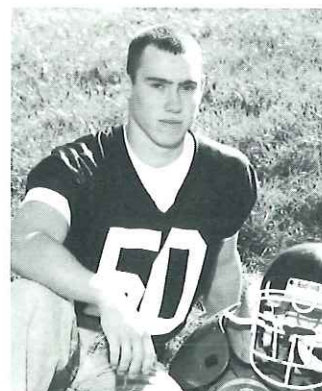
**#60 David Immel**



**# 40 Aaron Smith**



**#99 Jeff Wert**



**#50 Nevin Wilt**

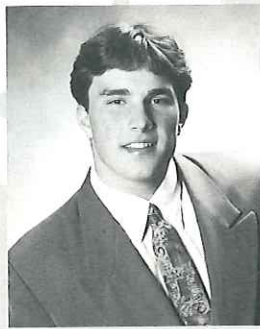
**On their selection to the  
Lezzer Lumber Football Classic,  
and wishes them good luck in the future.**



**BEST WISHES AND CONTINUED SUCCESS  
ON AND OFF THE FIELD  
TO CLEARFIELD HIGH SCHOOL AND THE  
NORTH SQUAD**



**#11 Jeremy  
Adams**



**#44 Jeremy Irwin**



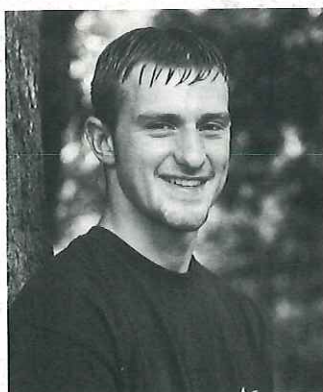
**#77 Tim Taylor**



**#13 Derrick Yohe**

**Clearfield Bison Quarterback Club**

**MOSHANNON VALLEY  
KNIGHT BOOSTER CLUB  
and  
LADIES BOOSTER  
AUXILIARY**



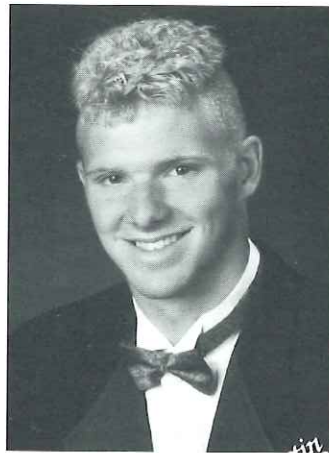
**#21 Jeremy  
Alleman**

**“Best of Luck” in your future**

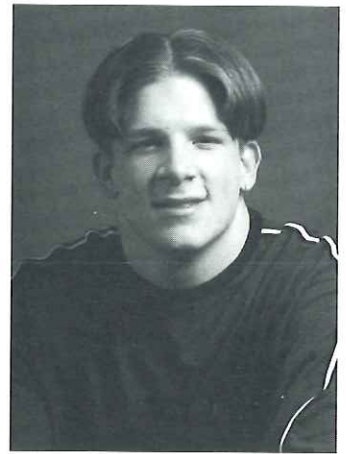
# DuBois Area Football Boosters Congratulates our Lezzer Lumber Classic **ALL STARS!**



#51 Barry Brubaker



#36 Paul Kot



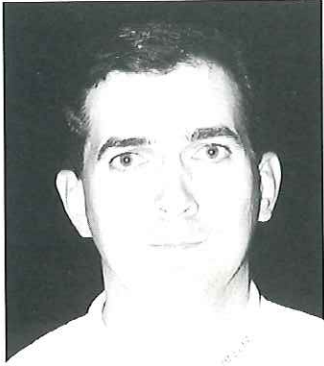
#39 Justin Marshall



## Good Luck!



# NORTH SQUAD



**Tom Gravish**  
Bellefonte Area  
Head Coach



**Tim Janocko**  
Clearfield  
Assistant Coach



**Herm Wertz**  
DuBois  
Assistant Coach

## NORTH SCHOOLS

BALD EAGLE AREA  
BELLEFONTE  
BROOKVILLE  
BUCKTAIL  
CENTRAL MOUNTAIN  
CLEARFIELD  
CURWENSVILLE  
DUBOIS  
EAST JUNIATA  
GLENDALE  
MOSHANNON VALLEY  
PENNS VALLEY  
PHILIPSBURG-OSCEOLA  
STATE COLLEGE AREA  
WEST BRANCH



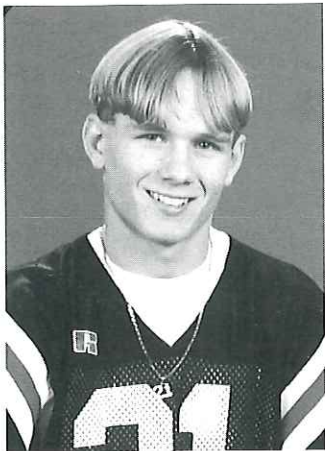
**Chris Dworek**  
Brookville  
Assistant Coach



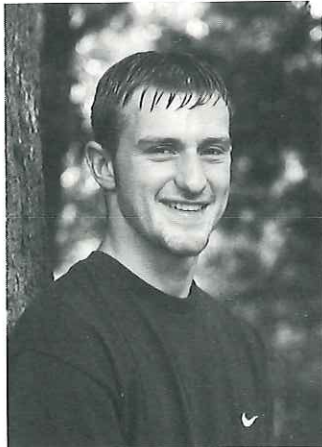
**Mike Turner**  
Bellefonte Area  
Assistant Coach



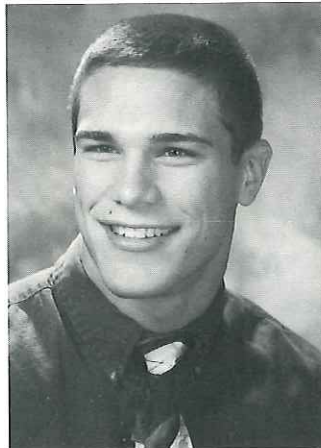
**Ron Iadarola**  
Bellefonte Area  
Assistant Coach



**#11 Jeremy Adams**  
Clearfield  
Walker Financial  
Services



**#21 Jeremy Alleman**  
Moshannon Valley  
NBOC Bank



**#42 John Arrigoni**  
Central Mountain  
Helt Hanna Kline  
Funeral Home, Inc.



**#74 Jim Barnett**  
Philipsburg-Osceola  
Mitchell Oil



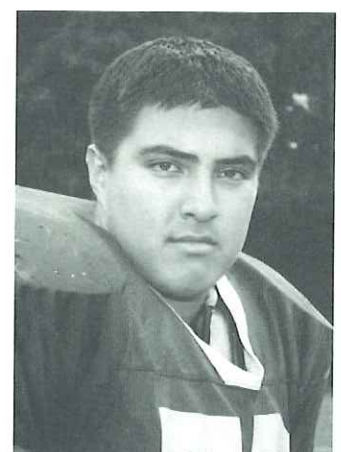
**#64 Eric Bressler**  
Curwensville  
Russell Real Estate



**#51 Barry Brubaker**  
Dubois  
Paris Uniform Rental &  
Corporate Image Wear



**#75 Ward Butler**  
Bellefonte  
Invisible Fencing of  
Central PA



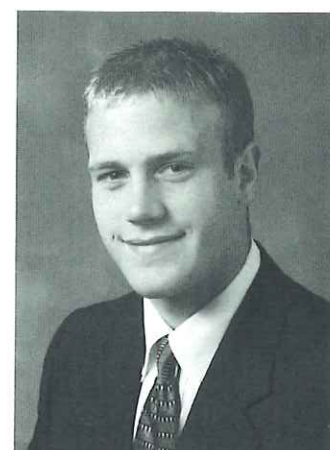
**#79 John Caldwell**  
State College  
Panda House  
Chinese Restaurant



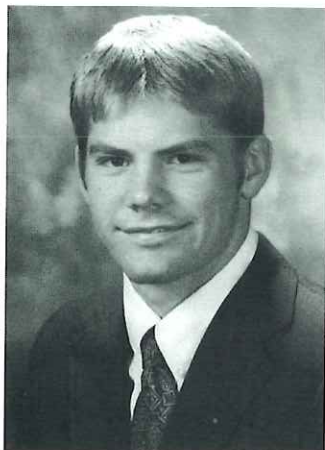
**#16 Ron Carlson**  
Bald Eagle Area  
D.L. Spear Trucking, Inc.



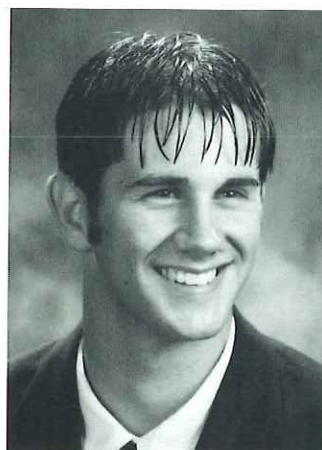
**#8 Jon Condo**  
Philipsburg-Osceola  
Waterwise Pool  
Company



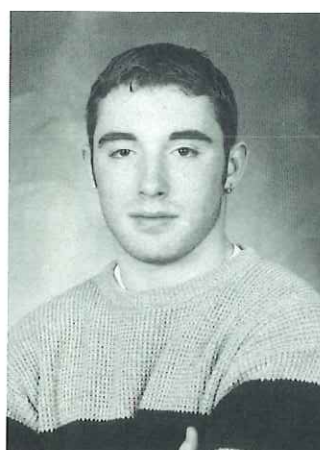
**#2 Mike Drenning**  
State College  
Joel Confer Pontiac-  
Buick-GMC Trucks-  
BMW-Dodge-Isuzu



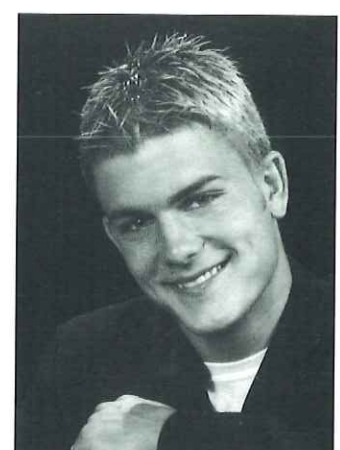
**#7 Josh Fuller**  
Central Mountain  
Tiadaghton Embroidery, Inc.



**#23 Kris Glunt**  
Bellefonte  
The Hofbrau



**#19 Jared Graybill**  
East Juniata  
Richenbaugh Building  
Supply



**#84 Ryan Hess**  
Curwensville  
Bob's Paint & Body  
Shop



## CLASSICAL FINANCIAL STATEMENT

How are the funds raised?  
Where does the money go?

The Central Pennsylvania Football Coaches Association (CPFCA) is recognized as a non-profit organization. The CPFCA has been the administrative organization promoting and conducting the Classic over the past fourteen years. Annually the receipts and expenditures for the operation of the game are in the \$25,000 to \$30,000 range.

There are three avenues of revenue for the Classic -- 1) individual player sponsors provide for the one-third of the funds, 2) Game Sponsor and Co-Sponsors contributions equate to one-fourth of the revenue, and 3) the promotional component, including advertisers, business card and patron sponsors, sale of promotional items such as hats, T-shirts, and game program, video, and ticket sales constitutes the remainder of the revenues.

On the expenditure side, player expenses including game jerseys, practice meals, player commemorative awards, insurance coverage, and scholarship awards account for forty percent of the costs. An additional forty percent of the expenses are related to field rental, game site personnel, purchase of promotional items, and game program printing costs. The rest of the expenses are associated with coaching expenses, promotional fees, and administrative costs.

Basically, the game is a result of efforts of individuals from the thirty school comprising the Central Pennsylvania region working for continued success of the Lezzer Lumber Classic.

## 2000 PATRONS

Steve, Cheryl, Steph & Sean Kleckner  
Ann Drumm

Kathleen R. Kimball  
Fred & Janene Lightner

Karen Owens Family  
Steve, Joellen, Bret & Tyler Phillips

Tom & Wanda Berry  
Bill Phillips & Donna Ziarkowski

Glenn & Peggy Wagner  
Phyllis & Henry Todd  
Bill, Lesley, Heather, & Ryan Todd

The Family of Andy Rehring  
Barry W. Wright

Daniel & Kathy Norris  
Denny, Debbie & Jason Adams

John & Janice Wert & Sons  
Terry & Lois Fisher

Mr. & Mrs. Richard Wood  
Steve & Julie Gibboney

William & Dorothy Witmer  
Michael & Susan Drenning

Jack & Carla Bailey  
Beau & Mary Lou Bourne

Ward H. Butler  
Tom & Kim Glunt

Frederick D. Piper  
Steve Goodman

Rosebud Reflections — Barbara J. Laing  
St. Joan of Arc Catholic Church

The Walstroms-Gary, Betsy, & Gary Jr.  
Tim & Chris Harter and Family

Merle, Sandy, Clay & Ty Ammerman  
Edward & Susanna Drapcho

Ted & Norma Carlson  
Ron, Cynthia & Matthew Carlson

Chuck & Barb Ethers and Family  
Mr. & Mrs. John Arrigone

Christine E. Major  
Kate, Kristin, Robbie, Chris, Patrick, & Kyla Irwin

Ron, Jill, & Tori Sabourin  
Matt & Nancy Medei

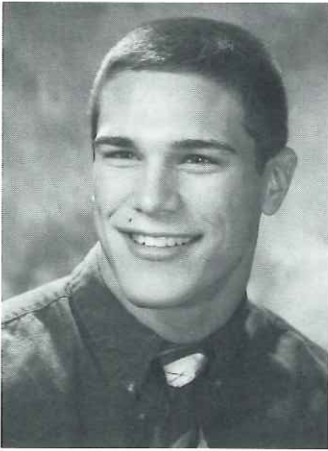
Wayne, Gaylene & Jarrett Sweeley  
Mike & Becky Baronak

You Da Man #61, Proud Parents of Michael Foltz, Scott &  
Sue Foltz

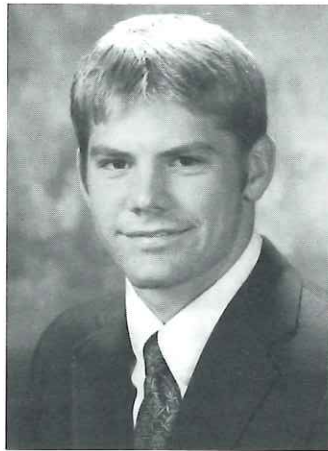
John & Susan Edwards  
Pal-Mino's Pizza

Jerry, Gale, and Jason Fuller

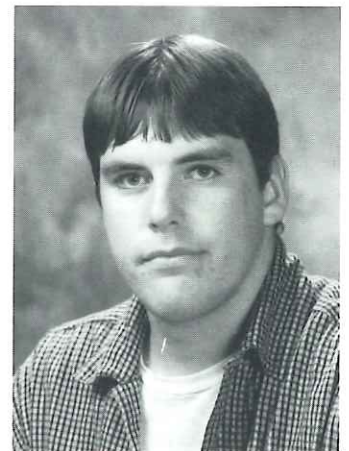
Good Luck Bill, Tim, & Gary--Juniata Valley Varsity J Club  
Building II Rec. Hall & Athletic Club



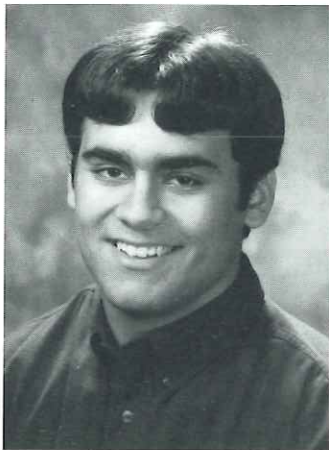
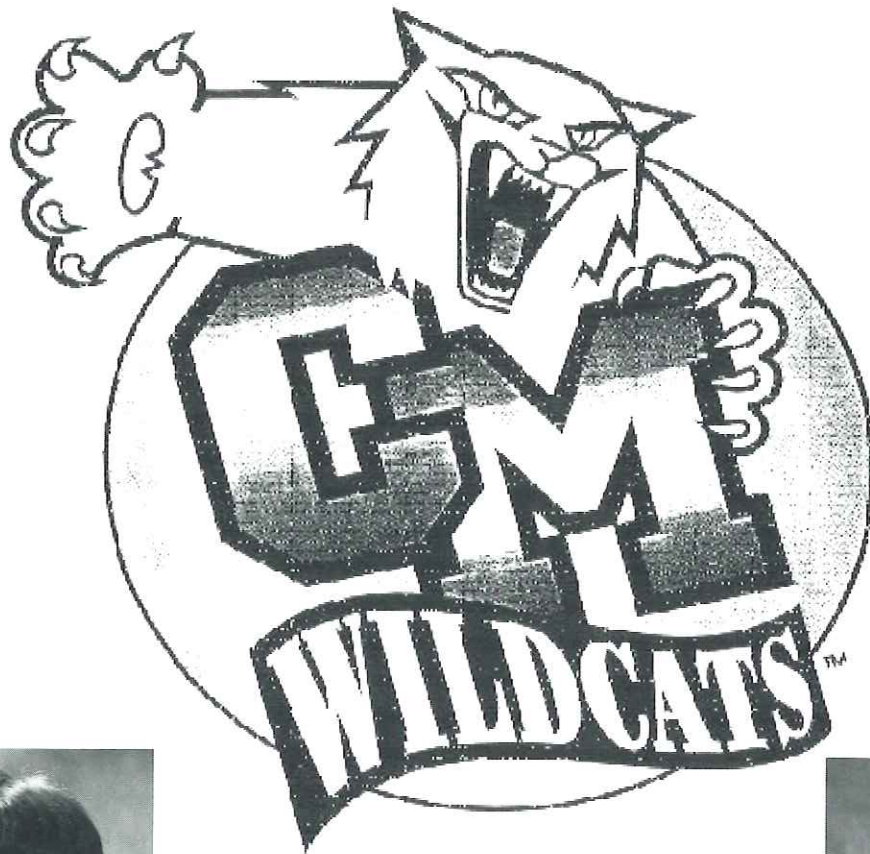
#42 John Arrigione



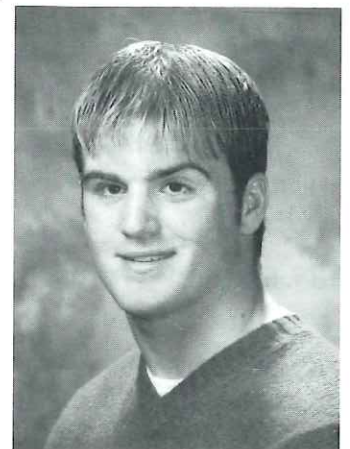
#7 Josh Fuller



#83 Brett Kleckner



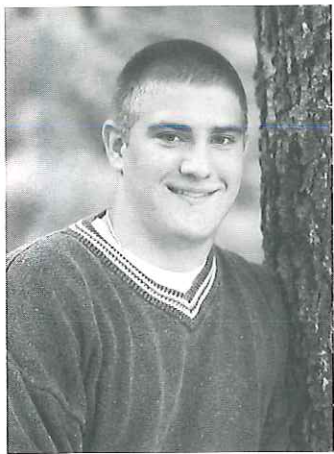
#78 Jason Sweeley



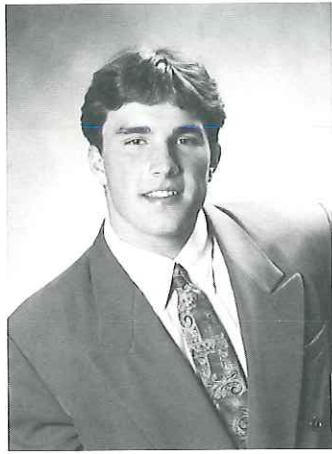
#22 Chad Todd

Congratulations and Best Wishes from the  
Central Mountain Wildcats Football Booster Club

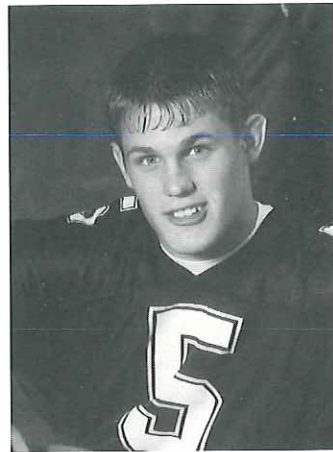




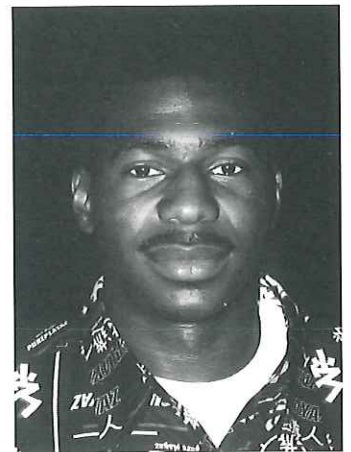
**#60 David Immel**  
Penns Valley  
Auto Glass Centre



**#44 Jeremy Irwin**  
Clearfield  
Irwin's Citgo



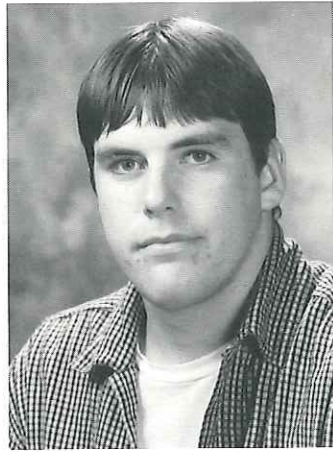
**#5 Emil Johnson**  
Brookville  
Reinard's Remodeling,  
Rea Jobber, & Owens  
Illinois



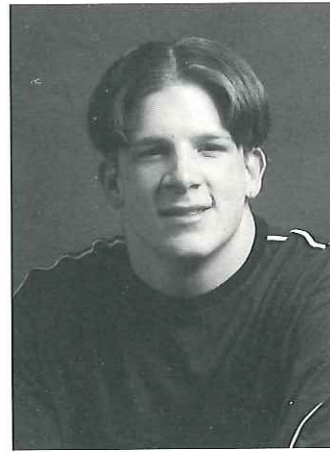
**#1 Tony Johnson**  
State College  
Raleigh Car Company



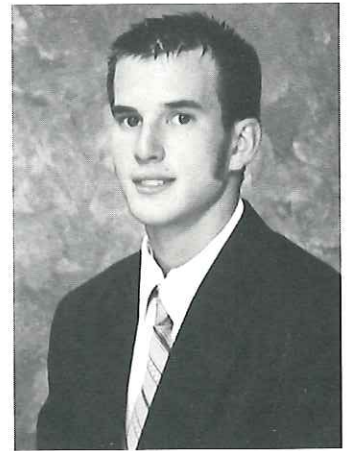
**#32 Dave Kimball**  
State College  
Wendy's of State  
College



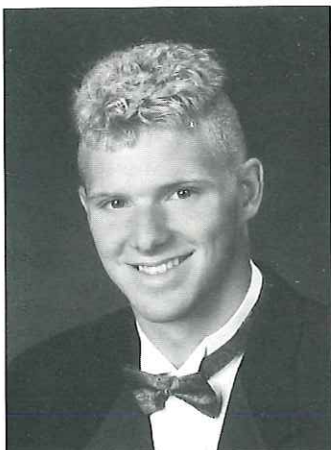
**#83 Brett Kleckner**  
Central Mountain  
Lock Haven Hospital



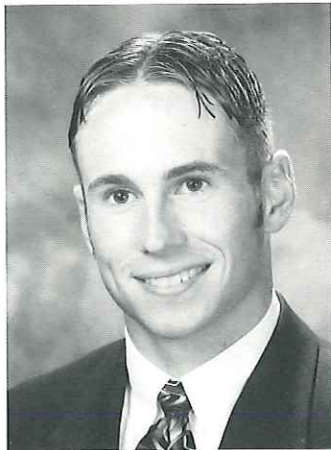
**#36 Paul Kot**  
Dubois  
Frank's Pizza



**#3 Joe Luther**  
Glendale  
Uncle Phil's



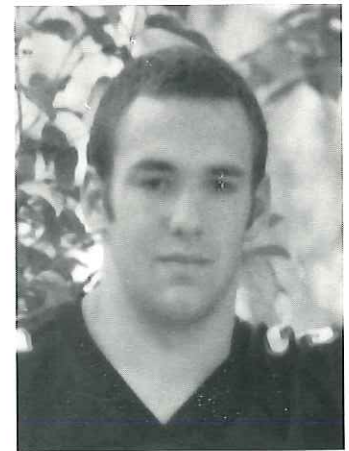
**#39 Justin Marshall**  
Dubois  
Marshall Bros. Const.  
Services



**#20 Tom McKee**  
Bellefonte  
The Hartman Agency

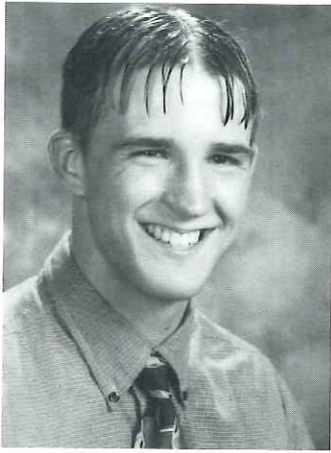


**#30 Jesse Nagle**  
Bald Eagle Area  
Red Zone Enterprises, Inc.



**#31 Eric Painter**  
Brookville  
George I. Reitz &  
Son's, Inc.

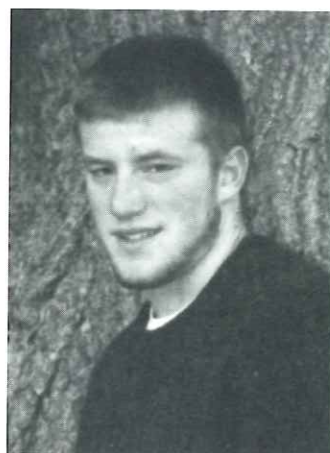




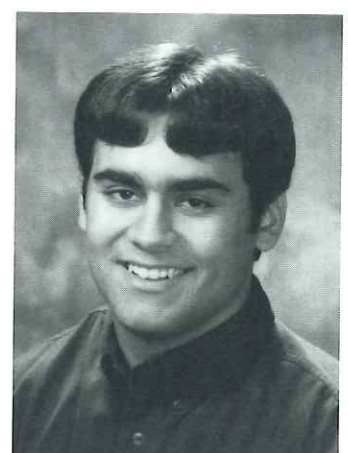
**#18 Ryan Poorman**  
 Bellefonte  
 Rightnour Mfg. Co.



**#76 Andy Rehring**  
 State College  
 Rutgers Organics  
 Corporation



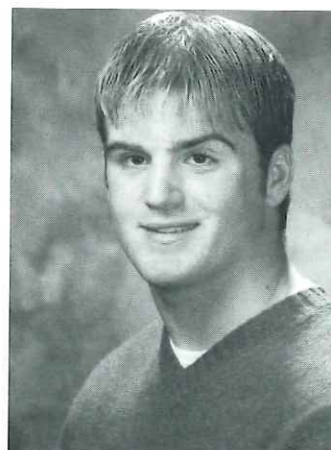
**#40 Aaron Smith**  
 Penns Valley  
 Discount Remodelers, Inc.



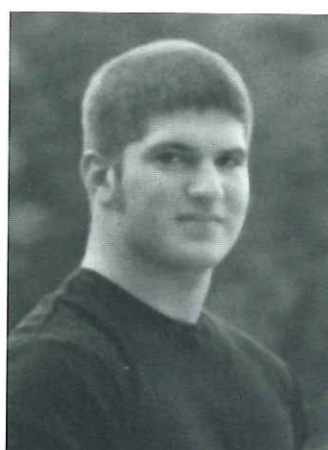
**#78 Jason Sweeley**  
 Central Mountain  
 G.S. Long Contractor &  
 Builder



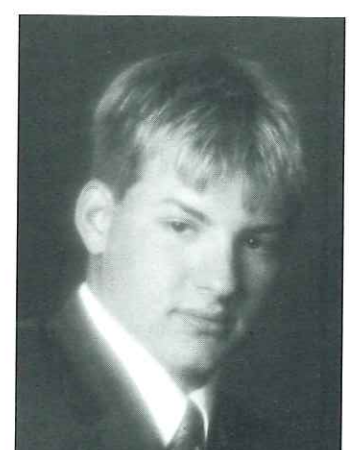
**#77 Tim Taylor**  
 Clearfield  
 County National Bank,  
 Clearfield



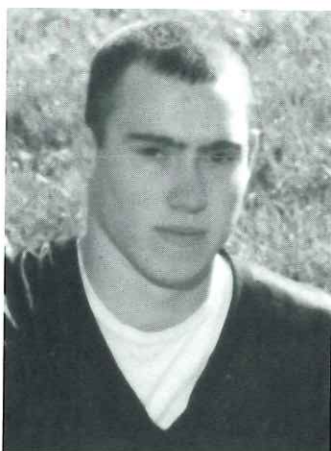
**#22 Chad Todd**  
 Central Mountain  
 Bair's Masonry  
 Miller Bros. Auto



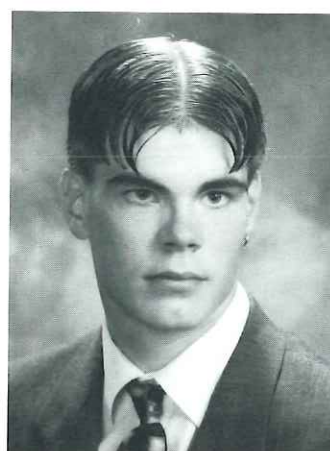
**#99 Jeff Wert**  
 Penns Valley  
 Allegheny Power



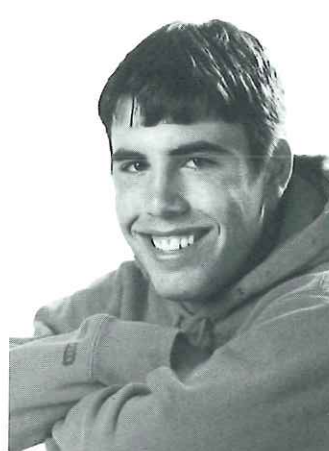
**#14 Jerry White**  
 West Branch  
 White Distributing Co.



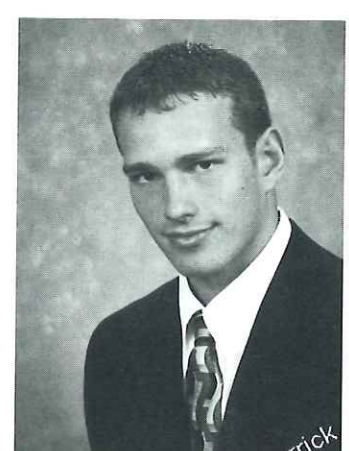
**#50 Nevin Wilt**  
 Penns Valley  
 Dale E. Wilt Jr.  
 Electrical Contractor



**#9 Bill Witmer**  
 Bellefonte  
 Bellefonte VFW Teener  
 League



**#45 Cory Wood**  
 Philipsburg-Osceola  
 JJ Powell, Inc.

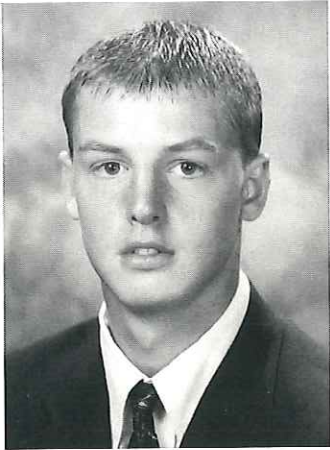


**#13 Derrick Yohe**  
 Clearfield  
 Miller & Son, Plbg. &  
 Htg., Inc. - DuBois

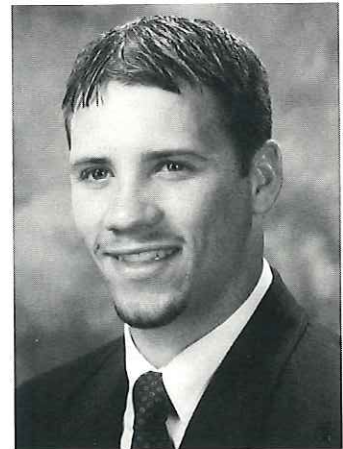


# Good Luck!

# BEA & North



#16 Ron Carlson



#30 Jesse Nagle

## First and Ten Club

## Bald Eagle Area

## High School





# 1999 Classic Roster--South



1 Jonathan Shields	S.Hunt	34 T. Jay Hileman	Altoona	73 Matt Sankey	Altoona
2 Dan Casillo	BG	38 Eric Hufford	Central	74 Darren Stiffler	Holliday.
9 Leverne House	Mt. Union	41 Brad Snyder	Bellwood-Antis	75 Pat Steel	Mt. Union
10 Lew Tress	Mt. Union	44 Kurt Border	Huntingdon	76 Clinton Gresh	Mo-Valley
11 Erik Klinger	Holliday.	51 Steve Mock	Williamsburg	77 John Paul Wensel	Juniata Valley
12 Mike Coulter	Bell.-Antis	52 Jason Weaver	Hollidaysburg	78 Jamie Brumbaugh	Mt. Union
19 T. J. Keith	Altoona	54 John Colton	Mo-Valley	81 Shant Aposhian	Bell.-Antis
20 Matt Baker	Williamsburg	58 Scott Harrington	Hollidaysburg	Coaches	
21 Mike Mock	Central	62 John Garner	Huntingdon	Alan Hartman, Head Coach	
22 Dave Wyland	Holliday.	63 Jeff Parks	S. Hunt.	David Baker	
23 Louie Lang	Williamsburg	64 Brian Bettwy	Bell.-Antis	William Clouse	
24 Joel Musselman	Central	65 Kevin Dodson	Central	David Hummel	
25 Shawn Ivie	Juniata Valley	70 Doug Claycomb	Clay.-Kimmel	Rick Wilson	
30 Tim Beals	Tyrone	72 Paul Elder	Huntingdon	John Garritano	

**NATIONWIDE  
INSURANCE**

Nationwide is on your side

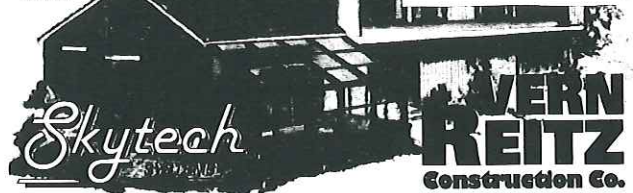
301 E. Spruce St.  
Philipsburg, PA 16866  
Office: 814-342-1600  
FAX: 814-342-7608

1535 N. Atherton St., Suite 21  
State College, PA 16803  
Office: 814-237-5192  
FAX: 814-238-6339

**DAVID T. BYRON**  
Agent

Additions • Remodeling • Repairs  
Green Houses • Sun Rooms  
Kitchens • Baths  
Decks

451 Gregory Lane  
Bellefonte, Pa. 16823  
o. 814-357-8122  
h. 814-357-8116 eve.



**MANUFACTURER'S AND  
DISTRIBUTORS OF QUALITY  
MUZZLELOADING AND ARCHERY ACCESSORIES**

Bob Rightnour - President  
Phone 814-383-4079  
814-383-4207  
Fax 814-383-4509

Rightnour Manufacturing Co.  
Box 107 Hecla Road  
Mingoville, PA 16856



*L. Woods*  
Photography

415 Montgomery Street  
Hollidaysburg, Pa. 16648

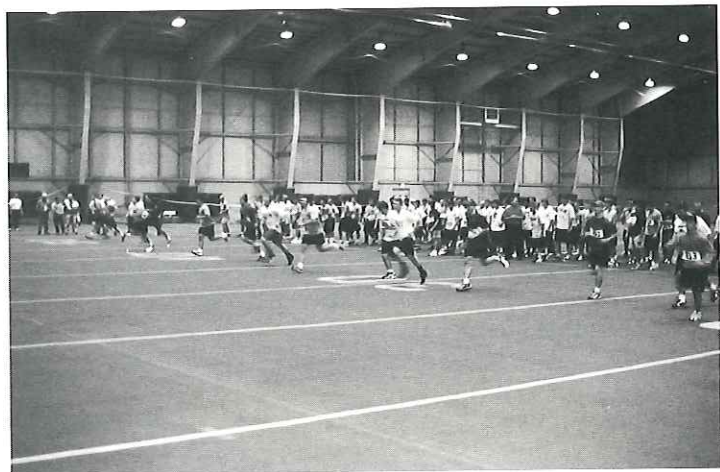
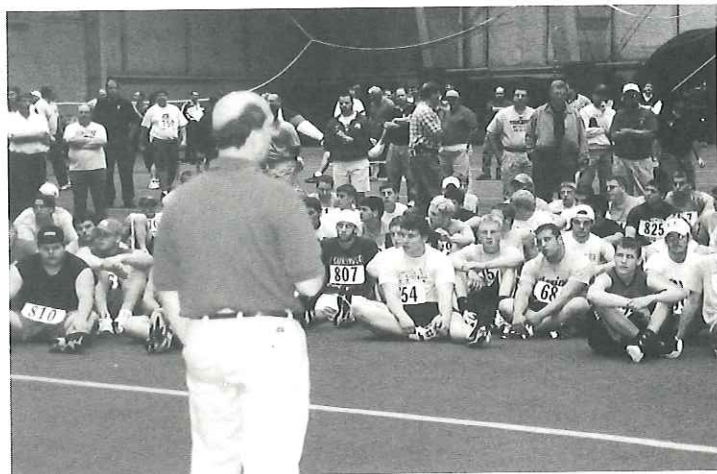
PHONE (814) 695-5601 LOREN WOODS, OWNER





# 2000 CPFCA Prospect Camp Photos

May 22, 2000 -- PSU, Holuba Hall



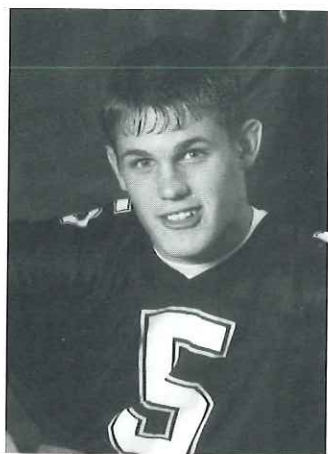
**MAKING  
A DIFFERENCE . . .  
TODAY AND  
TOMORROW**

**RÜTGERS-ORGANICS**

201 Struble Road, State College, PA 16801

*A Centre County Neighbor For Over 42 Years*

The Raider Football Booster Club  
Congratulates Brookville's  
first two players in the Classic.



#5 Emil Johnson



#31 Eric Painter

... have a great game and  
best of luck in the future!



# Where are they now . . .

## Player Profiles from the '90 Classic

**“Tut” Bailey (Philipsburg-Osceola)** – graduated cum laude from Shippensburg University with a BS/Ba Degree in Marketing and Public Relations. 1993 Second Team Region II Baseball, 1994 and 1995 PSAC-East Scholar Athlete Award. 1995 All-Conference PSAC-East, All Region II, and First Team Division II GE-CoSida Academic All-American. Employed at Penn States’ Mt. Alto campus as Continuing Education representative.

**Matt Baker (Williamsburg)** – graduated from Juniata College with a Science teaching degree. Was a three-year Middle Atlantic All-Conference selection as Wide Receiver and All-Conference selection in Baseball his Senior year. Teaching at Lebanon High School and coaching football, basketball, and baseball.

---

## 1999 Classic Photos



Left: Mike Lezzer, Lezzer Lumber Classic Sponsor; John Franco, Tyrone Head Coach; David “Whitey” Berardinelli, 1989 Player Profile; Mike Flickinger, Penns Valley HS, 1999 CPFCA Hall of Fame Inductee; Henry Haitz, Centre Daily Times, Controller; and Ron Pavlechko, State College HS, 1999 CPFCA Hall of Fame Inductee.

Right: Lezzer Lumber Sponsor, Mike Lezzer presenting the winning trophy to North Head Coach, Dave Lintal, State College HS.



**DONJOY™**

**S O S**

---

**SPORTS & ORTHOPEDIC SPECIALISTS, INC.**

---

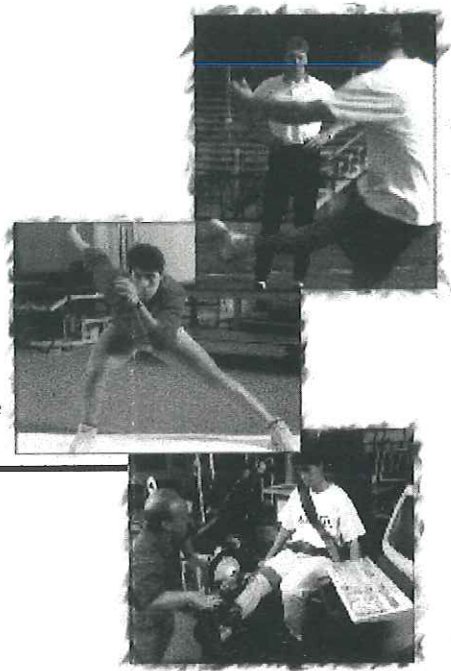


# Touching lives, improving life

**Our Services Include:**

- General Orthopedic & Sports Physical Therapy
  - Treatment of Work-Related Injuries
  - Neck and Back Rehabilitation
  - Athletic Training
  - McKenzie Mechanical Spinal Assessment
  - Orthotic Fabrication
  - Sports Performance Programs
  - Hand Therapy
- All physician referrals welcome
  - Appointments within 24 hours
  - Immediate sports injury consultations
  - Day, evening and weekend hours available
  - Accessible 24 hours a day & weekends

Puritan Park Medical Center  
2525 9th Avenue, Suite IA  
Altoona, PA  
814-944-9226



located behind Bon Secour Holy Family Hospital

**JOYNER CLINICS**  
ALTOONA • TIPTON • STATE COLLEGE • LEWISTOWN

**Subscribe to:**



Get 17 jam-packed issues to the best source of high school football in the state of Pennsylvania for only \$35.00 a year.

Follow all the action across the state each week during the high school football season. The **Pennsylvania Football News** features state-wide rankings in each class, predications, feature players, outstanding performances, Dan-Merr computer rankings, district notes, scores of every game in Pa each week, weekly columns, and much, much more.

Don't miss out on all of the action. **Subscribe today!**

\_\_\_\_\_ Yes, I want to subscribe to the PFN. Enclosed is my check for \$35.00. Please send my subscription to:

Name: \_\_\_\_\_

Address: \_\_\_\_\_

City: \_\_\_\_\_ St: \_\_\_\_\_ Zip: \_\_\_\_\_

Send form to: **Pennsylvania Football News, P. O. Box 334, Dept LL, Revloc, PA 15948**

# The Bellwood-Antis Quarterback Club Salutes



**These Three Outstanding Athletes  
From Bellwood-Antis High School**



**#84 Steve Cogan**



**#73 Brad Kirk**



**#69 Jason Kyle**

## **BLUE DEVIL COACHING STAFF**

**HEAD COACH:** John Hayes.

**ASSISTANTS:** Jim Torsell, Gene Yingling, Bill Crowell,  
John Garritano, Randy Miller, Charlie Burch, Galen Claar, Ken Swanson.



# SOUTH SQUAD

## SOUTH SCHOOLS



HOLLIDAYSBURG

**John Barton**  
Hollidaysburg  
Head Coach



**Jim Zauzig**  
Huntingdon  
Assistant Coach



**Andy Walter**  
Hollidaysburg  
Assistant Coach

ALTOONA  
BELLWOOD-ANTIS  
BISHOP GUILFOYLE  
CENTRAL  
CLAYSBURG-KIMMEL  
HOLLIDAYSBURG  
HUNTINGDON  
INDIAN VALLEY  
JUNIATA VALLEY  
LEWISTOWN  
MOUNT UNION  
PUNXSUTAWNEY  
S. HUNTINGDON  
TYRONE AREA  
WILLIAMSBURG



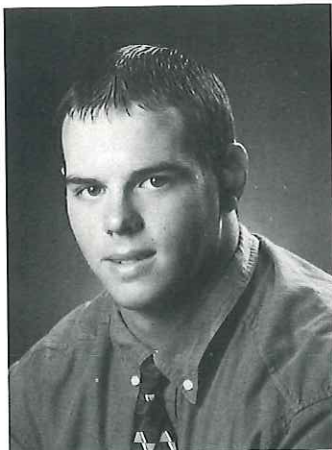
**Paul Yakymac**  
Hollidaysburg  
Assistant Coach



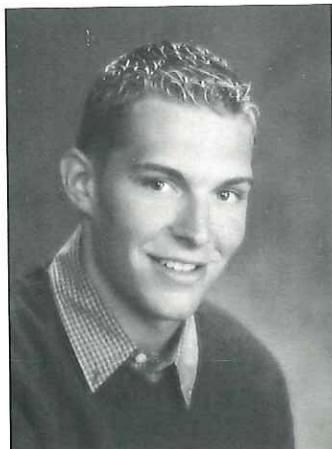
**Toby Mitchell**  
Huntingdon  
Assistant Coach



**Mike Hudy**  
Huntingdon  
Assistant Coach



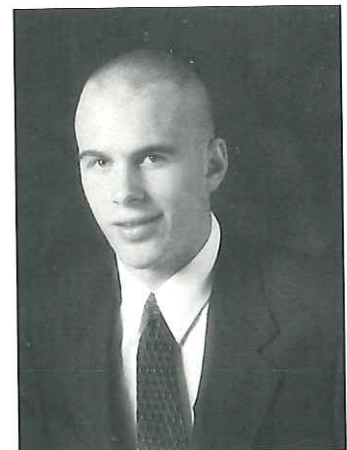
**#31 Scott Ayers**  
Central  
Dr. Joan Bartolotta



**#85 Tyler Beckwith**  
Tyrone  
B&GLtd. - Hollidaysburg



**#9 T. Blake Bourne VI**  
Hollidaysburg  
Joseph Chiropractic Office  
Thomas B. Bourne V

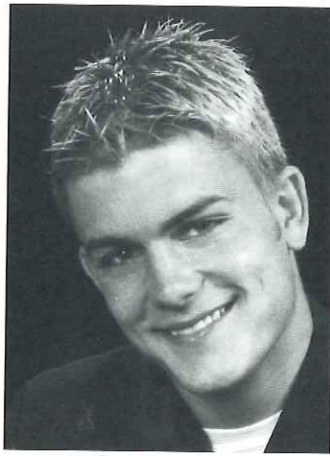


**#5 Aaron Brown**  
South. Huntingdon  
Brown & Walters  
Insurance Agency, Inc.

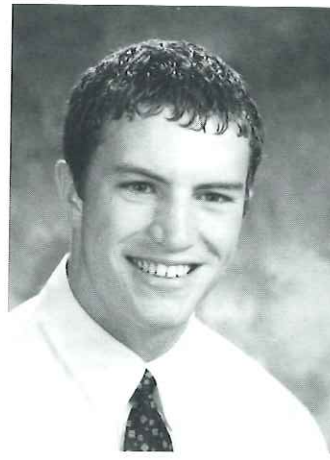




**#66 Bill Burrows**  
Bishop Guilfoyle  
William P. Burrows



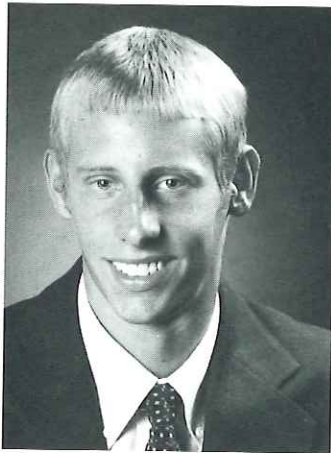
**#52 Alex Clouse**  
Williamsburg  
Clouse Trucking, Inc.  
For Your Bulk Hauling Needs



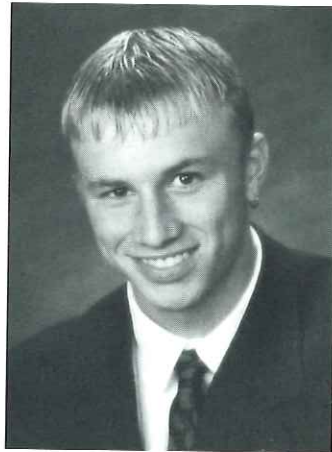
**#84 Steven Cogan**  
Bellwood-Antis  
Natural Gains - Complete  
Fitness Supplier



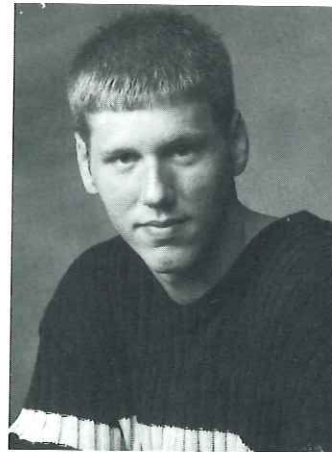
**#50 Rock DePiro**  
Altoona  
Big A Booster Club



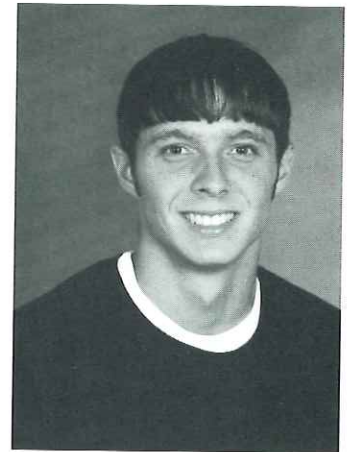
**#25 Chris Edwards**  
Altoona  
Big A Booster Club



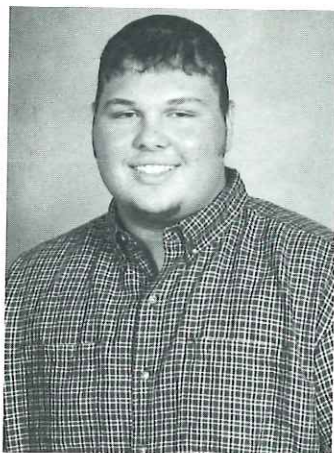
**#15 Kris Fedeli**  
Altoona  
New PIG Corporation



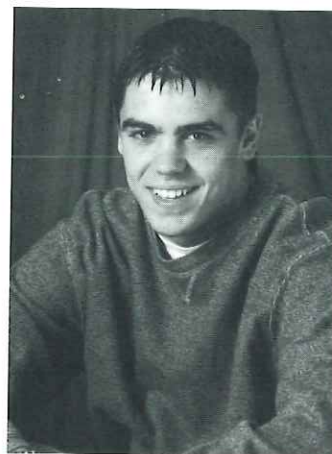
**#74 Ryan Fisher**  
Huntingdon  
Stickler Construction  
LLC



**#88 Jason Foltz**  
Lewistown  
Nittany Media, Inc.



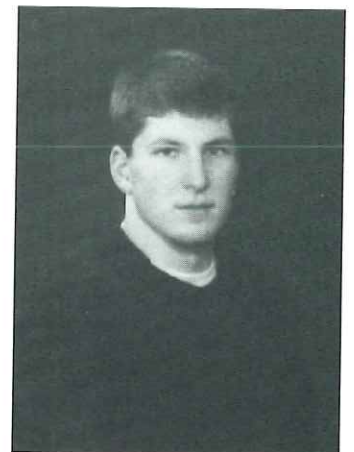
**#61 Michael Foltz**  
Lewistown  
Snedeker Oil Company



**#28 J. B. Gibboney**  
Huntingdon  
McMurtries Tavern



**#77 Jake Hennaman**  
Bishop Guilfoyle  
Captain Hook's Hotel,  
Juniata & Altoona



**#3 Bruce Henrich**  
Huntingdon  
Genex Co-op



# LEZZER LUMBER FOOTBALL CLASSIC GAME RULES

## OFFENSIVERESTRICTIONS:

Must play with a balanced line. There must be three men on either side of center on the line of scrimmage. The offense may align in or motion to trips formation as long as one running back remains aligned in the backfield between the tackles. Each team must attempt passes on 30% of the offensive plays. Percentages will be checked midway through the third quarter. If under the 30% passes have been thrown, each non-pass play will be penalized as unsportsmanlike conduct until the percentage is met and maintained.

Forced scrambles and sacks shall be counted as pass percentage.

## DEFENSIVERESTRICTIONS:

Must align in basic 5-2 with a man on the center, a man on each tackle, a man on each end (or outside the defensive tackle on a split end side.) Linebackers must be over the guards and deeper than the heels of the defensive tackles. Secondary may be man or zone in any desired scheme. Defensive ends (one or both may drop for pass coverage) but must start in alignment outside defensive tackle on or off the line. There shall be no blitzing or shooting linebackers or secondary. Slanting & Looping by front five is permitted.

**SPECIAL FOR KICKING GAME:** In kicking game situations the linebackers may move up onto line of scrimmage, and the secondary may move up (but must stay outside the defensive end); however, no more than 7 may rush on any one play.

## SPECIAL FOR GOAL-LINE:

Anytime the offense has less than three yards to go for a first down or a touchdown, the linebackers may move as close to the line as desired, and the secondary may place two men on the line (secondary men must be outside the defensive end). After a score by either team, a team that is behind by 9 or more points will have the choice to kick-off or receive.

## PLAYING TIME:

Each player must participate for at least 15 plays.

## TIME SPECIFICATIONS:

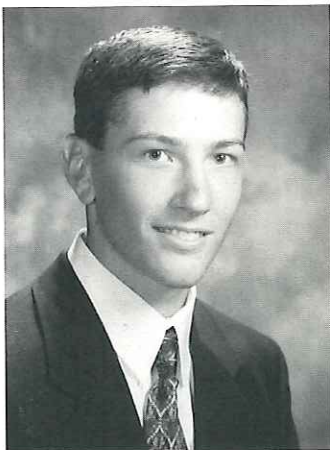
Quarters 1 and 3 will be 12 minutes

Quarters 2 and 4 will be 15 minutes

## TIE BREAKER:

If the score is tied at the end of regulation play it will stand as a tie.

## GOOD LUCK



#11 Matt Sell

from the

**CLAYSBURG - KIMMEL  
FOOTBALL  
BOOSTER CLUB**

26 N. 2nd St.  
Clearfield, PA 16830

Phone (814) 765-3582  
Fax (814) 765-7467



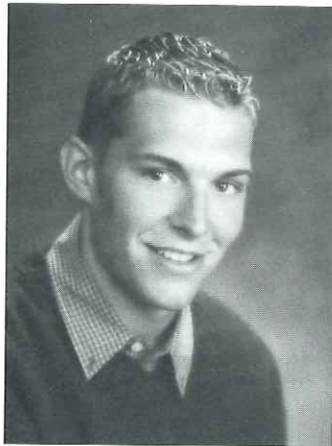
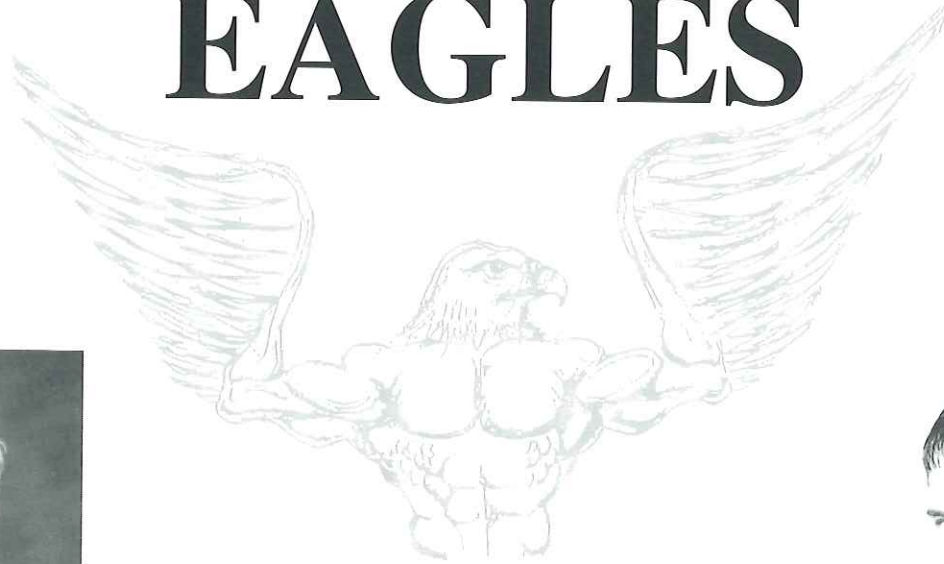
Embroidery - Screen Printing  
Team Sales

Printing Done  
on Premises

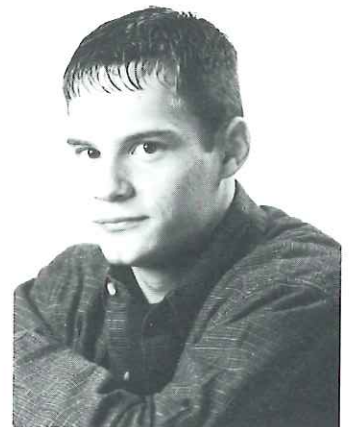
DANIEL L. MALLOY

29

# TYRONE GOLDEN EAGLES



#85 Tyler Beckwith



#24 Steve Johnson

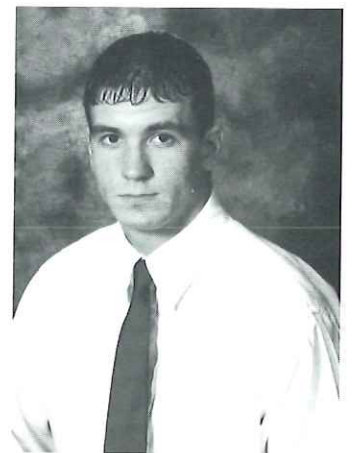
1999 AA  
PA STATE  
CHAMPIONS



#55 Michael McNelis



#45 Jamal Owens



#22 Nathan J. Verilla

These young men were the Heart and Soul of the 1999 Tyrone Golden Eagle Football Squad.

Success! Through Hard Work and Dedication

Good Luck Men

Ad Sponsored by the Tyrone Golden Eagle Football Boosters.



# TYRONE GOLDEN EAGLES

## 1999 AA PENNSYLVANIA STATE CHAMPIONS

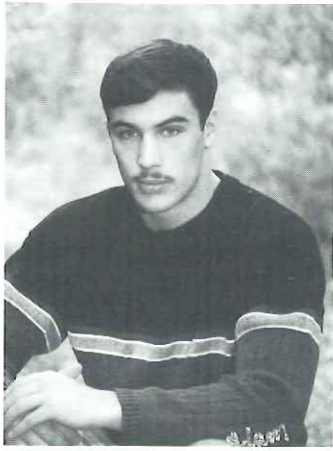
15-0



Front row (l to r): Pat McNelis, Jamal Owens, Josh Lucas, Steve Johnson, and Nate Verilla. Second row (l to r): Jason Crowell, Doug Roseberry, Mike McNelis, Lee Thompson, Jesse Jones, Eric Latchford, Tyler Beckwith, Scott Gummo, Dave McCahan, and Brandon Hoover. Third row (l to r): Evan Klesius, Justin Moore, Tim Dry, Garrett Desch, John Medina, Mike Mueller, Tyler Mertiff, Ben Johnson, Tony Lalhi, and Joe Lehner. Fourth row (l to r): Eric Sloss, Jerry Wilson, Byron Conrad, Mike Whitby, Clayton Ellenberger, Josh Taylor, Charles Otto, Chris Woomer, and Jon Nye. Fifth row (l to r): Ron Shoenberger, Brad Tuskovich, Brian Moore, Tae Ayers, Brad Owlett, Jason Kurtz, Ryan Hildebrand, Adam Kobuck, and Dan Miller. Sixth row (l to r): Heidi Banas, Tony Yaniello, John Meredith, John Gressler, Luke Rhoades, Craig Sechler, John Meredith, Chuck Banas, Dan Bender, Rick Match, Darren Elvey, and Al Shoenberger. (Photo by Steve Michaels).

Special Congratulations from the Central Pennsylvania Football Coaches Association





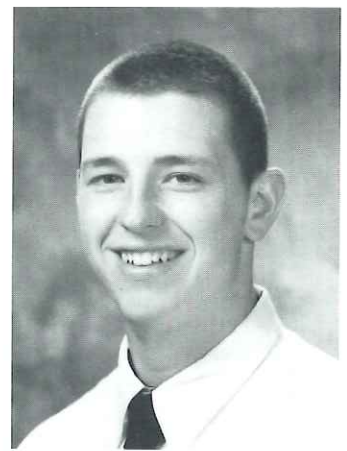
**#43 Adam Hickey**  
 Mount Union  
 Mount Union Area  
 Football Boosters



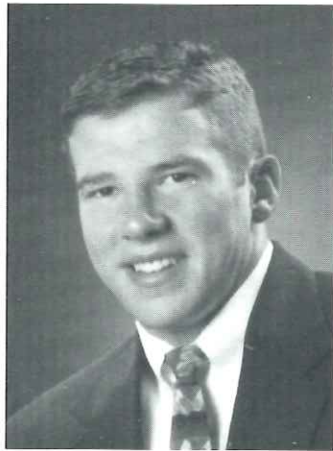
**#32 Travis Hunsinger**  
 South. Huntingdon  
 Buck's Barber Shop  
 Wakefields AutoParts  
 Ingersolrand, Inc.



**#24 Steve Johnson**  
 Tyrone  
 Westvaco Corporation



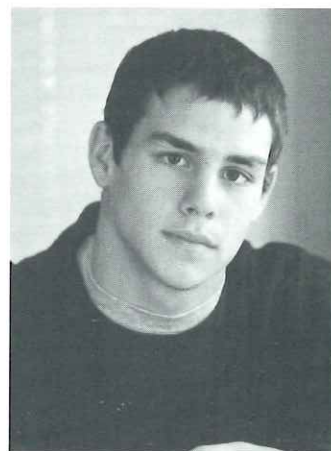
**#73 Brad Kirk**  
 Bellwood-Antis  
 Stapleton Insurance  
 Agency



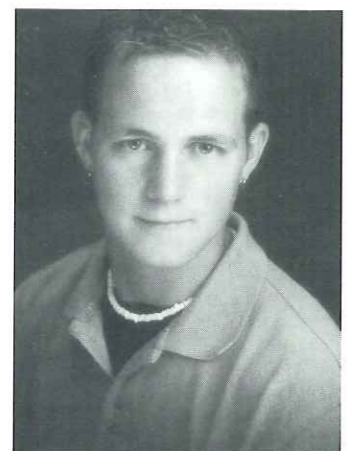
**#1 Paul Kozak**  
 Huntingdon  
 Jim Bair



**#69 Jason Kyle**  
 Bellwood-Antis  
 Litz Electric, Inc.



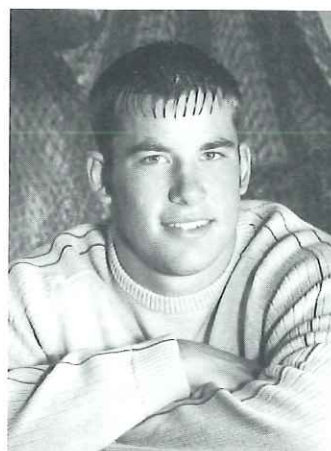
**#20 Garrett Lestochi**  
 Bishop Guilfoyle  
 Pacifico Bakery



**#6 Bill Lightner**  
 Juniata Valley  
 Mead School & Office  
 Products Division



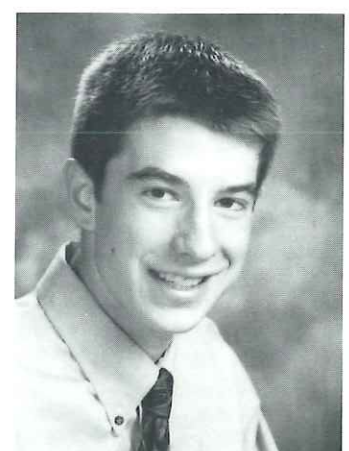
**#67 Christopher Major**  
 Mount Union  
 Mount Union Area  
 Football Boosters



**#21 Brian R. McCoy**  
 Central  
 McCoy's Lawn &  
 Garden



**#33 Tim McCrum**  
 Juniata Valley  
 Juniata Valley Varsity J



**#34 Marc McKillop**  
 Hollidaysburg  
 Altoona Giant Eagle





**#55 Michael McNelis**  
Tyrone  
Mid Penn Lodge



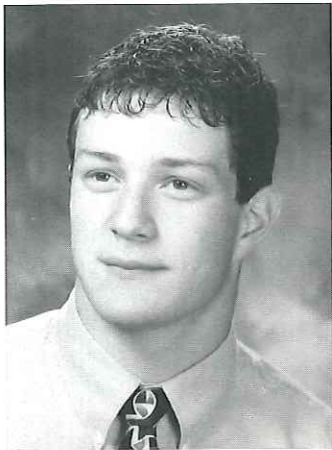
**#23 John Mond**  
Puxsutawney  
Cole Orthodontics  
Associates



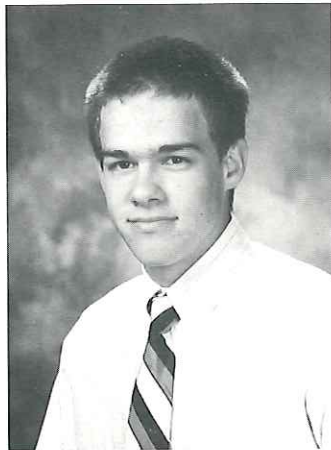
**#44 Jason Norris**  
Huntingdon  
Corbin's Alignment Shop



**#45 Jamal Owens**  
Tyrone  
Chuck & Cindee Banas



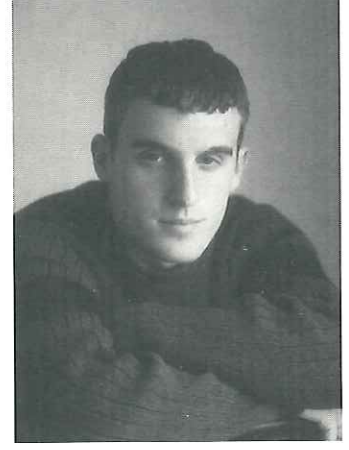
**#12 Tyler Piper**  
Hollidaysburg  
The Blair Candy Co., Inc.  
Altoona



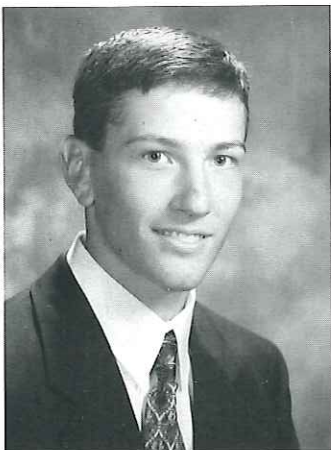
**#54 Dave Pisanick**  
Hollidaysburg  
Evey, Routch, Black,  
Dorezas, Magee &  
Levine LLP



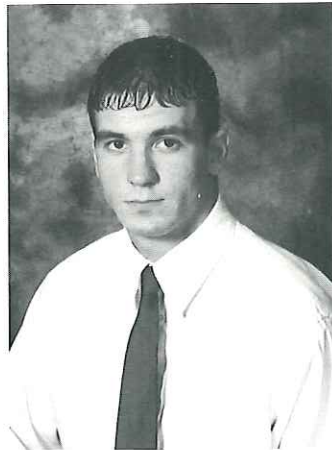
**#72 Gary Rowe**  
Juniata Valley  
Juniata Valley Varsity J



**#2 Eric Sabourin**  
Bishop Guilfoyle  
Fry Technology



**#11 Matt Sell**  
Claysburg Kimmel  
Minetech Engineers



**#22 Nathan J. Verilla**  
Tyrone  
N.A.P.A. Auto Parts



**#4 Rick Zupon**  
Altoona  
Big A Booster Club



PNC BANK BIG 33 FOOTBALL CLASSIC PRESENTS  
 "Super Bowl of High School Football"

# Pennsylvania vs. Ohio

HERSHEYPARK STADIUM JULY 22, 2000 7:00 PM

**Jim Kelly**

2000 Big 33  
 Honorary Chairman



SPONSORED BY:

abc 27 . AAA

Capital Blue Cross . Sprint

Toyota . Waste Management

Westra Construction

NATIONAL FOOTBALL LEAGUE (NFL)  
 Buffalo Bills (1986 - 1996)

- Led the Bills to four consecutive AFC Championships from 1990 - 1993.
- Between 1988 - 1995 guided Bills to six AFC East Championships.
- Four back-to-back Super Bowl appearances (XXV, XXVI, XXVII, XXVIII).

- Named MVP of the 1991 Pro Bowl during one of his five Pro Bowl appearances.
- Holds every major Buffalo Bills passing record.
- Thrown for over 35,000 passing yards and 237 touchdowns.
- His career passer rating of 84.4% is the sixth highest in NFL history.

UNITED STATES FOOTBALL LEAGUE (USFL)  
 Houston Gamblers (1984 - 1985)

- Threw 83 touchdowns in two seasons with the Houston Gamblers.
- Named 1984 USFL Player of the Year.

- Had sixteen 300-yard passing games, three 400-yard games and one spectacular 574-yard performance.

COLLEGE  
 University of Miami (1979 - 1982)

- First Quarterback star at "Quarterback U."
- Led Hurricanes to 1980 Peach Bowl Appearance.
- Upset #1 Penn State in his first college game.

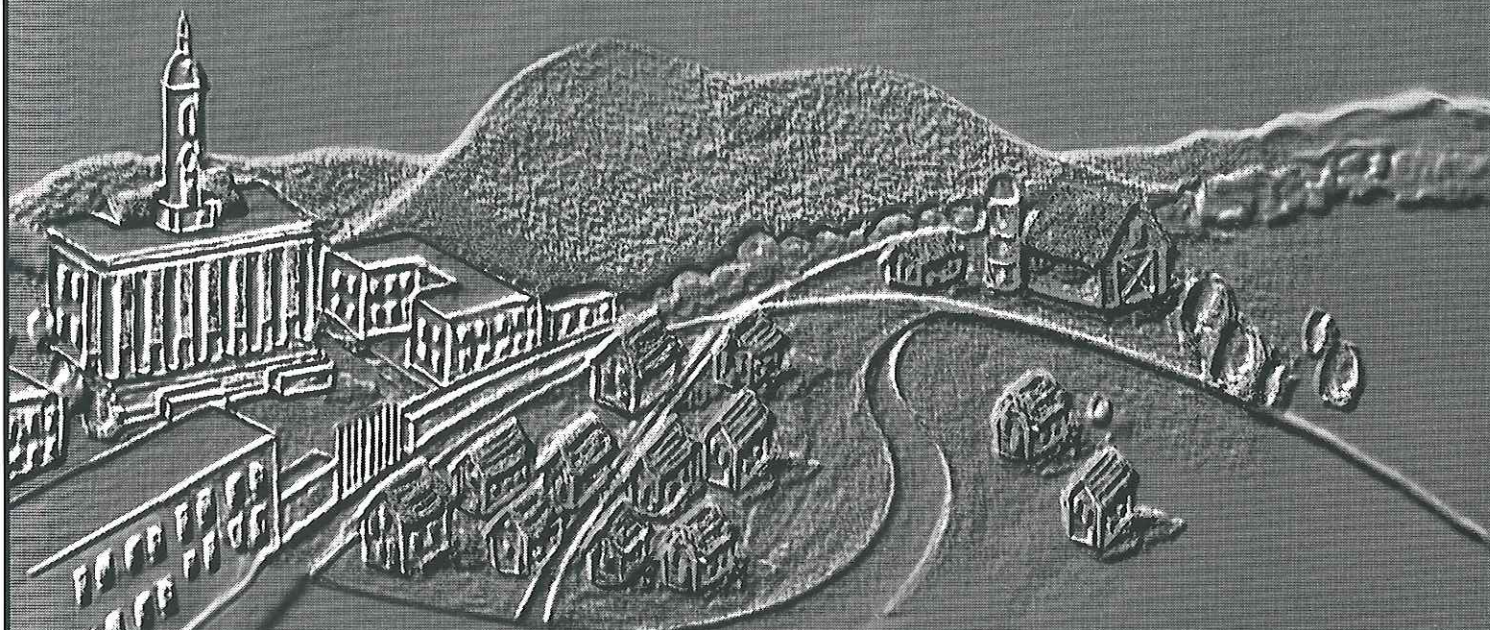
- Was a Heisman Trophy candidate before separating his shoulder during his senior season.
- Inducted into the University of Miami Hall of Fame in 1999.

*Big 33 Scholarship Foundation's mission is to produce the premier high school all-star football game in the United States that is much more than a game, that showcases and develops excellence in students and the community, and raises funds for academic scholarships and other charitable activities*



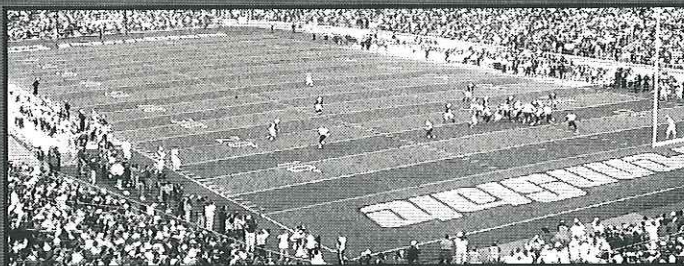
The Number One Source For Local Area Sports Teams.

Source: The Customer Study: Readers and Potential Readers By Clark, Martire & Bartolomeo, 1998



WE ARE  
**SPORTS COVERAGE**  
**SPORTS COVERAGE**  
**SPORTS COVERAGE**

For home delivery of Central PA's number one source  
for local sports, call  
**(888) 237-3801**. Find the  
best in-depth online  
PSU sports coverage at  
[www.centredaily.com](http://www.centredaily.com)



Your Life. Your Paper. **CENTRE DAILY TIMES** [www.centredaily.com](http://www.centredaily.com)

The award-winning Centre Daily Times is proud to support the Lezzer Lumber Football Classic.





The **Experience**  
Shows



Russell Athletic. The name says it all. Everything we make, from a basic t-shirt to Major League Baseball uniforms, has over 97 years of manufacturing experience built right in. So when you want proven quality and durability at a great value, get Russell Athletic. The Experience Shows.

**DeMans Sports**  
295 Main Street  
Brookville, PA 15825  
Phone 814 849-2351  
Fax 814 849-7892

<http://www.russellathletic.com>

*Aon Risk Services  
Salutes the Accomplishments of the  
2000 Football All-Stars Selected to the  
Lezzer Lumber Classic!*



*Insure your vision*

- *Insurance Coverages*
- *Risk Management Consulting*
- *Employee Benefits*
- *Loss Control Consulting*

*Aon Risk Services, Inc. of Pennsylvania  
Hershey, PA 17033  
tel: (717) 533-3371 • fax: (717) 533-8514  
e-mail: peter\_stauning@ars.aon.com  
Web Site - www.aon.com*

**Gold & Silver Creations — Balfour Co.**  
Larry Suhey  
High School Products

Championship Rings & Watches

817 South Sparks Street 814-237-3860  
State College, PA 16801 Fax: 867-6324

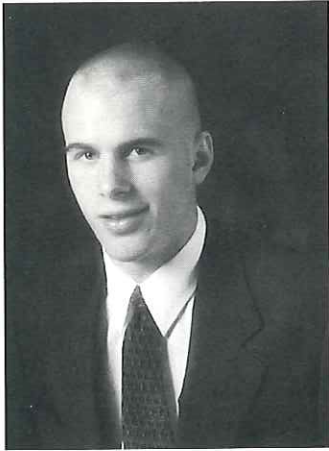
**JUNIATA VALLEY**

**FOOTBALL  
COACHES**



# CONGRATULATIONS

## SOUTHERN HUNTINGDON *ROCKETS*



#5 Aaron Brown



#32 Travis Hunsinger

# 7-3

## S.H.C. Football Boosters

**Woods Auto Parts**  
**765-2332**

*Low Prices on  
New Auto Parts!* 210 North 4th Street  
Clearfield  
Mon.-Fri. 8 a.m.-5 p.m.  
Sat. 8 a.m.-1:30 p.m.

Bob Johns

**STATE COLLEGE**  
210 Rolling Ridge Drive  
Penn Eagle Industrial Park  
Bellefonte, PA 16823  
(814) 353-8400  
Fax: (814) 353-8403

BRANCHES  
Mechanicsburg, PA  
Ephrata, PA

**CROFF**  
TRACTOR & EQUIPMENT, INC.

*Quality and Satisfaction is Our Motto*

**H.V. CAMBERG SERVICES INC.**

Used Car Sales, Auto Repair,  
and Special Needs Transportation  
Route 729, Ansonville

814-672-3653 DAILY 9-4  
EVES: DAVE 672-3601  
OR HOWIE 378-5694

MAILING ADDRESS:  
RR #1, Box 87  
IRVONA, PA 16656



*"Baxter Built"*


Tork Baxter  
Debbie Lamison  
(814) 342-2382

405 W. Presqueisle St.  
Phillipsburg, PA 16866  
Fax: (814) 342-2383

# CPFCA CLASSIC COACHING STAFFS


Year	Team	Head Coach	Assistant Coaches	Year	Team	Head Coach	Assistant Coaches
1985	North	Don Folmar, Philipsburg-Osceola	J. Gawen Stoker, Bald Eagle Area Dick Cummings, Lewistown Jack Bailey, Philipsburg-Osceola Frank Pipik, Philipsburg-Osceola	1993	North	Mike Packer, Lock Haven	Bob Dwyer, Lock Haven Mike Flickinger, Penns Valley John Englert, Lock Haven J.P. Hannah, Lock Haven Bob Shinskie, Lewistown
	South	John Hayes, Bellwood-Antis	Vince Nedimyer, Altoona Harold Price, Hollidaysburg Tom Irwin, Bishop Guilfoyle Pete Sellers, Huntingdon		South	John Franco, Altoona	Dan Bender, Altoona Tom Gibboney, Huntingdon Tom Bussman, Altoona Jack Krider, Central Rick Hatch, Altoona
1986	North	J. Gawen Stoker, Bald Eagle Area	John Wetzler, Bellefonte Area Ken Achuff, Bellefonte Area Bob Myers, Bald Eagle Area Curt Heverly, Bald Eagle Area	1994	North	Herm Wertz, DuBois	Tim Janocko, Clearfield Rod Smith, DuBois Jeff Vizza, DuBois
	South	Harold Price, Hollidaysburg	John Hayes, Bellwood-Antis William Clouse, Juniata Valley Jack Krider, Central John Franco, Altoona		South	Alan Hartman, Mount Union	Dave Baker, Williamsburg Mark Conner, Lewistown Dave Hummel, Mount Union Bob Shinskie, Lewistown Rick Wilson, Mount Union
1987	North	John Wetzler, Bellefonte Area	Ron Pavlechko, State College Dick Bell, Bellefonte Area Ken Achuff, Bellefonte Area Tim Janocko, Clearfield	1995	North	Tim Janocko, Clearfield	Todd Connor, Bald Eagle Nittany Mike Packer, Lock Haven Forrest Campman, Clearfield Jacque DeMatteo, Clearfield
	South	William Clouse, Juniata Valley	Tom Miller, Tyrone Jack Krider, Central Tom Gibboney, Huntingdon Bob Rupert, Juniata Valley		South	Jeff Lingenfelter, Claysburg-Kimmel	Jerry Moore, Clearfield Jack Krider, Central Harold Price, Hollidaysburg Monte Cowher, Claysburg-Kimmel Anthony Garver, Central Kent Sell, Claysburg-Kimmel
1988	North	Jack Bailey, Philipsburg-Osceola	Dan Decker, Bald Eagle Nittany Frank Pipik, Philipsburg-Osceola Mike Packer, Lock Haven Dick Wood, Philipsburg-Osceola	1996	North	Howie Camberg, Moshannon Valley	Steve Gutoff, Philipsburg-Osceola Gary Hubler, West Branch Frank Belella, Moshannon Valley Jerry Delucia, Moshannon Valley
	South	Tom Irwin, Bishop Guilfoyle	Chuck Hoover, Tyrone Mark Montrella, Bishop Guilfoyle Howie Camberg, Moshannon Valley Denny Conlon, Bishop Guilfoyle		South	John Franco, Tyrone	Jeff Vroman, Moshannon Valley Mike Burket, Huntingdon John Hayes, Bellwood-Antis John McDonald, Tyrone John Meredith, Tyrone Mark Woodring, Tyrone
1989	North	Gary Hubler, West Branch	Joe Lauver, Indian Valley Ed Williams, West Branch Bill Vroman, West Branch Joe Kovalcin, West Branch	1997	North	Howie Camberg, Moshannon Valley	Bob Young, Bucktail Gary Hubler, West Branch Ron Hoover, Bald Eagle Area Jerry Delucia, Moshannon Valley
	South	John Hayes, Bellwood-Antis	Tom Gibboney, Huntingdon Chet Dillen, Bellwood-Antis John Franco, Altoona Bill Crowell, Bellwood-Antis		South	John Franco, Tyrone	Jeff Vroman, Moshannon Valley Dave Baker, Williamsburg John McDonald, Tyrone Richard Hatch, Tyrone Willie Breon, Indian Valley
1990	North	Tim Janocko, Clearfield	Forrest Campman, Clearfield Mike Flickinger, Penns Valley Mike Packer, Lock Haven Jerry Moore, Clearfield	1998	North	Lyle Domico, Curwensville	Tom Broeren, State College Chris Folmar, Curwensville Dave Lintal, State College Martin Tobias, Penns Valley
	South	Alan Hartman, Mount Union	David Baker, Williamsburg William Clouse, Juniata Valley David Hummel, Mount Union Rick Wilson, Mount Union		South	Jim Zauzig, Huntingdon	Bill Wetzel, Curwensville Frank Baker, Southern Huntingdon Mike Culver, Lewistown Toby Mitchell, Huntingdon Craig Sellers, Huntingdon Mike Zinobile, Juniata Valley
1991	North	Dan Decker, Bald Eagle Nittany	Jess Long, Bald Eagle Nittany Tom Shaffer, Bald Eagle Nittany Mike Shenkle, DuBois William Vroman, West Branch	1999	North	Dave Lintal, State College	Mark Baney, State College John Cryder, State College Tom Sallade, State College Chris Weakland, State College
	South	Jack Krider, Central	John Franco, Altoona Tom Gibboney, Huntingdon Jeff Lingenfelter, Claysburg-Kimmel Harold Price, Hollidaysburg		South	Mike Zinobile, Juniata Valley	Ron Hoover, Bald Eagle Area Martin Tobias, Penns Valley Tom Gibboney, Huntingdon Jeff Glenny, Juniata Valley Jeff Lingenfelter, Claysburg-Kimmel John McDonald, Bishop Guilfoyle Mike Smith, Juniata Valley
1992	North	Mike Flickinger, Penns Valley	Don Hosterman, Penns Valley Don Lucas, Penns Valley Mike Packer, Lock Haven Ron Pavlechko, State College				
	South	Gary Juart, Punxsutawney	Howie Camberg, Moshannon Valley Gary Garzoni, Punxsutawney Alan Hartman, Mount Union John Knopick, Punxsutawney				

**C. P. F. C. A.**



**JACK BAILEY**  
Game Director  
106 Curtis Street  
Philipsburg, PA 16866  
H - 814-342-6496  
Fax 814-342-4898

**C. P. F. C. A.**



**ROB IRWIN**  
Secretary/Treasurer  
2461 Buchenhorst Road  
State College, PA 16801  
H - 237-7597  
W - 355-4833



# CENTRAL PENNSYLVANIA FOOTBALL COACHES ASSOCIATION HALL OF FAME



**1995**  
J. Gawen Stoker  
Bald Eagle Area



**1997**  
Jack Bailey  
Philipsburg-  
Osceola



**1997**  
BILL VROMAN  
West Branch



**1998**  
Harold Price  
Holidaysburg



**1998**  
Bill Clouse  
Juniata Valley



**1999**  
Ron Pavlechko  
State College

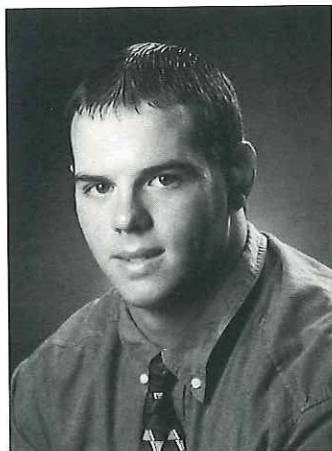


**1999**  
Mike Flickenger  
Penns Valley

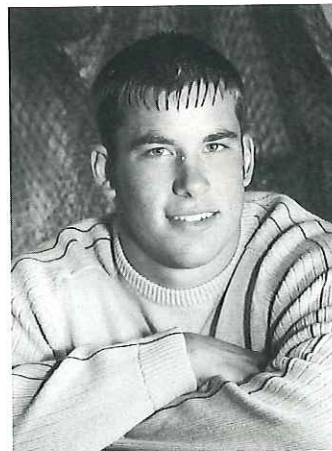
---

# SPRING COVE QUARTERBACK CLUB

Sends Best Wishes for Success To



**#31 Scott Ayers**



**#21 Brian R.  
McCoy**

**CATCH ALL THE ACTION WEEKNIGHTS 5:30-7:00PM**

**1390/970AM**

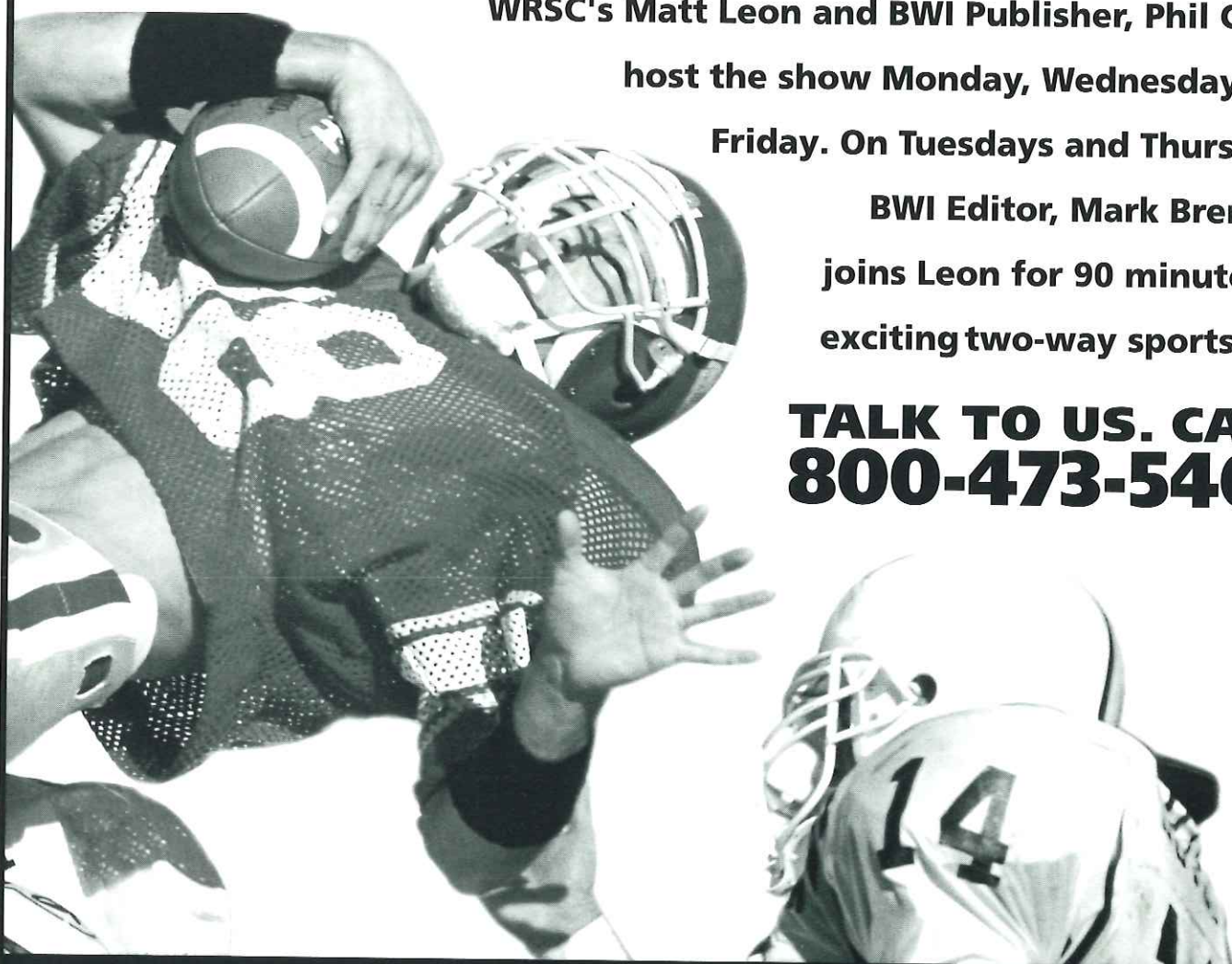
# **WRSC**

## **TALK RADIO**

**S P O R T S L I N E**

**WRSC's Matt Leon and BWI Publisher, Phil Grosz, host the show Monday, Wednesday and Friday. On Tuesdays and Thursdays, BWI Editor, Mark Brennan joins Leon for 90 minutes of exciting two-way sports talk.**

**TALK TO US. CALL  
800-473-5466**



**ON THE WEB @ [www.bluewhite.net](http://www.bluewhite.net)**

**EMAIL—[sportsline70@hotmail.com](mailto:sportsline70@hotmail.com)**



# BELLEFONTE AREA CHEERLEADERS



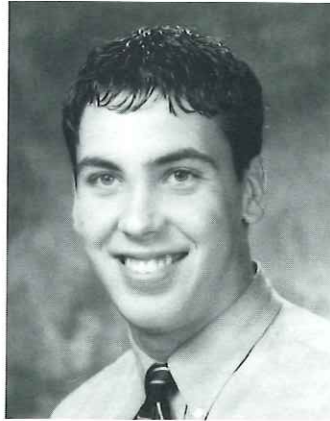
**First Row:** Tara Brown, Tara Tice, Sara Kuhlman. **Row 2:** Alayna Stephens, Lindsey Lucas, Billie Bird, Sara Neff. **Row 3:** Katie Musser, Jaime Reish, Annie Rockey, Katie Garner, Megan Reighard, Rachel Roberts, Lindsey Powers, Rachel Frazier.

# HOLLIDAYSBURG JR. HIGH CHEERLEADERS

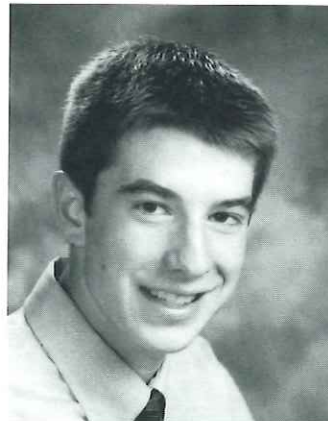


**FRONT ROW:** (L to R) Jennifer Hoover, Katie Boal, Hillary Dempsie, Sarah Higgins, Jenna Chamberlain, Stacy Wagner. **MIDDLE ROW:** Abbey Sheetz, Aeden Ghebreselassie, Sara Bow, Heghan Counsman, Tara Dunn, Mickie Roth, Stephanie Erb. **STANDING:** Annie Crilly, Angie Mazzei, Christine Cortez, Bridget Collins, Chelsy Montgomery, Courtney Nagle, Christina Zerby. **Coaches:** Tammee Kaminski and Donna Harker.

# Hollidaysburg Area Golden Tigers Booster Club Congratulates



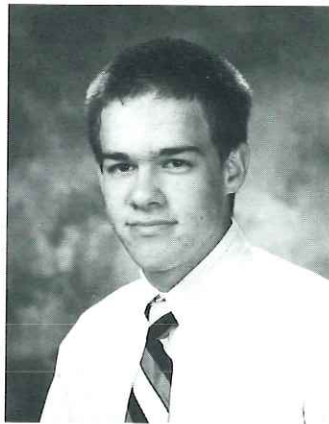
#9 T. Blake  
Bourne VI



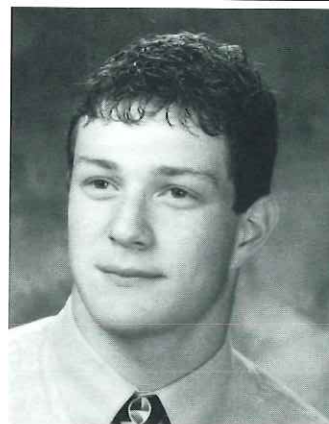
#34 Marc McKillop

Good Luck Golden Tigers

Hollidaysburg Boosters



#12 Tyler Piper



#54 Dave Pisanick

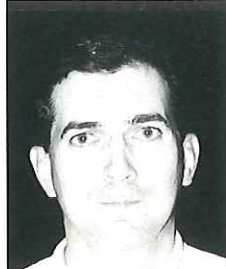
Western Conference Champions  
'65 '67 '82 ' 85 '88 '89 '90  
Central Counties Conference Champs  
'56 '73 '74 '75 '78 '81 '82 '85  
District VI AAAA Champions  
'85 '89 '90 '95 '99  
Big 8 Champions  
'73  
Allegheny Conference Champions  
'94



# CENTRAL PENNSYLVANIA FOOTBALL COACHES ASSOCIATION SALUTES THEIR OUTSTANDING TEAMS AND COACHES



John Barton,  
Hollidaysburg  
District VI & IX  
AAAA Champs



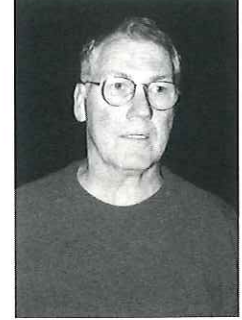
Tom Gravish,  
Bellefonte Area  
District VI & IX  
AAA Champs



Tim Janocko  
District IX  
AAA Champs



John Franco, Tyrone  
PA State  
District V & VI  
AA Champs  
Big 33 Coach



J. Gawen Stoker  
Indian Valley  
Big 33 Inductee  
Coaches Hall of Fame

<u>YEAR</u>	<u>AAAA DISTRICT VI</u>	<u>AAAA DISTRICT IX</u>
1985	*HOLLIDAYSBURG	
1986	JOHNSTOWNVT	
1987	*STATECOLLEGE	
1988	*ALTOONA	
1989	*HOLLIDAYSBURG	
1990	*HOLLIDAYSBURG	*PUNXSUTAWNEY
1991	*STATECOLLEGE	*DUBOIS
1992	*STATECOLLEGE	*DUBOIS
1993	*HOLLIDAYSBURG	*CLEARFIELD
1994	*STATECOLLEGE	*DUBOIS
1995	*HOLLIDAYSBURG	
	<u>DISTRICT VI &amp; IX</u>	
1996	*ALTOONA	
1997	*ALTOONA	
1998	*STATECOLLEGE	
1999	*HOLLIDAYSBURG	

<u>YEAR</u>	<u>AAA DISTRICT VI</u>	<u>AAA DISTRICT IX</u>
1985	FORESTHILLS	
1986	*HUNTINGDON	
1987	*TYRONE	
1988	*BALDEAGLEAREA	
1989	*BELLEFONTEAREA	
1990	*CENTRAL	
1991	*LOCKHAVEN	
1992	*LOCKHAVEN	
1993	*LOCKHAVEN	
1994	*LOCKHAVEN	
1995	CENTRALCAMBRIA	
	<u>DISTRICT VI &amp; IX</u>	
1996	*LOCKHAVEN	
1997	*HUNTINGDON	
1998	*HUNTINGDON	*CLEARFIELD
1999	*BELLEFONTEAREA	*CLEARFIELD

<u>YEAR</u>	<u>AA DISTRICT VI</u>	<u>AA DISTRICT V</u>
1985	*BISHOPGUIFOYLE	
1986	UNITED	
1987	*BISHOPGUIFOYLE	
1988	*BELLWOOD-ANTIS	
1989	WESTMONTHILLTOP	
1990	PURCHASELINE	REDBANK
1991	FORESTHILLS	VALLEY
1992	FORESTHILLS	CARNACITY
1993	FORESTHILLS	BROOKVILLE
1994	FORESTHILLS	BROOKVILLE
1995	*TYRONE	
	<u>DISTRICT V &amp; VI</u>	
1996	*TYRONE	
1997	*TYRONE	
1998	UNITED	
1999	*TYRONE	

<u>YEAR</u>	<u>A DISTRICT VI</u>	<u>A DISTRICT IX</u>
1985	HOMERCITY	
1986	*JUNIATA VALLEY	
1987	*JUNIATA VALLEY	
1988	*WESTBRANCH	
1989	LAUREL VALLEY	
1990	LAUREL VALLEY	
1991	SALTSBURG	SMETHPORT
1992	CONEMAUGH VAL.	SMETHPORT
1993	LAUREL VALLEY	CLARIONLIMESTONE
1994	LAUREL VALLEY	COUDERSPORT
1995	FERNDALE	SMETHPORT
	<u>DISTRICT V &amp; VI</u>	
1996	*MOSHANNON VALLEY	
1997	*BELLWOOD-ANTIS	
1998		
1999	BISHOPCARROL	

\*Indicates CPFCA Member

When it comes to buying the quality products that you want and need for your home...

# We Make The Difference!

With the vast array of home improvement products on the market, you need a knowledgeable voice to separate fact from fiction...to answer your questions like:

- Which product is better?
- What's the difference between products?
  - How long is the warranty?
  - How is it applied?
  - How much will I need?

These are common questions, and ones that require a knowing, experienced sales representative in order to be answered completely and accurately. That's what Lezzer Lumber is all about - experience in every area of the operation, from sales to delivery! Trust Lezzer Lumber!

*Lezzer Lumber...Tradition, Quality and Service Since 1927!*

**Ask Us About Installing Your Next Project!**

**Eight Locations To Serve You!**



**CertainTeed**  
*Quality, made certain. Satisfaction guaranteed.*

**Armstrong**

**KEMPER**  
DISTINCTIVE CABINETS

**FOREVER**  
STORM & SCREEN DOORS  
By EMCO.

**OWENS CORNING**



**DEWALT**

**Lezzer**  
PRO INSTALLATIONS, INC.

Curwensville  
DuBois  
Indiana  
Butler  
Muncy  
State College  
Grove City  
Cranberry

Lezzer Commercial Door  
Division  
Lezzer Truss Systems, Inc.