

MEMORIAL FIELD **June 21** STATE COLLEGE  
1997

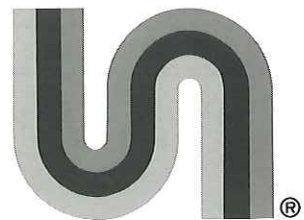


CO - SPONSORED BY



CONVENIENCE MARKET

SPONSORED BY



UNI-MARTS, INC.

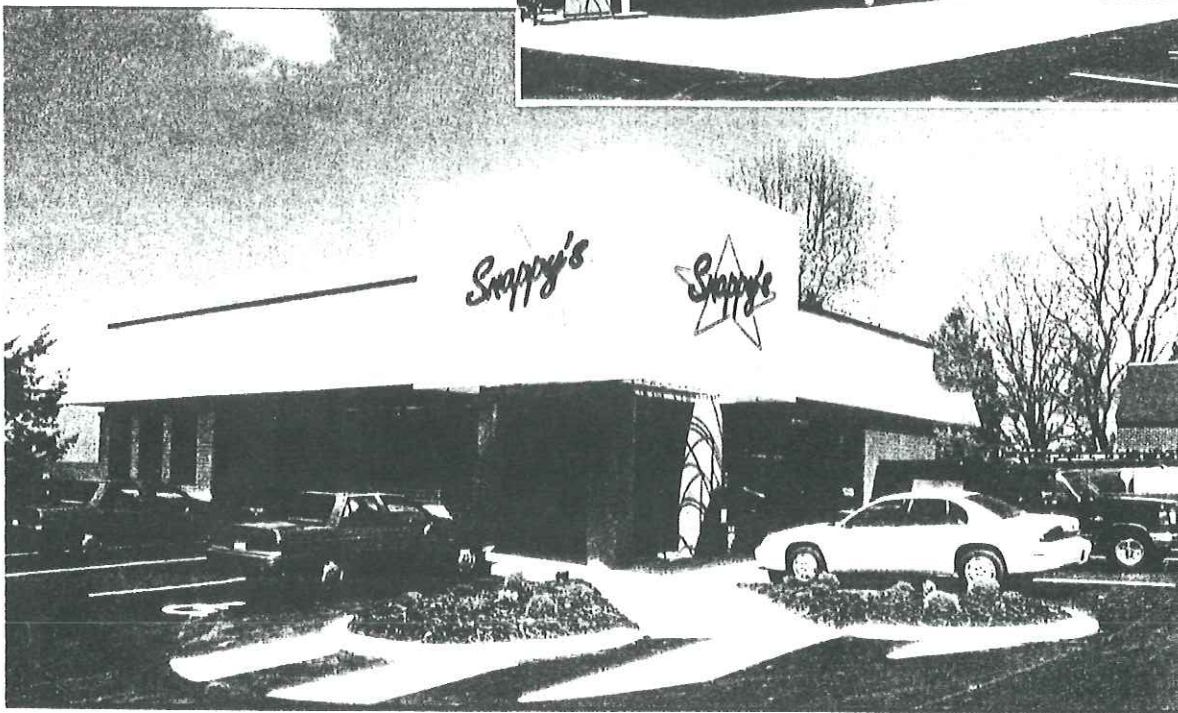
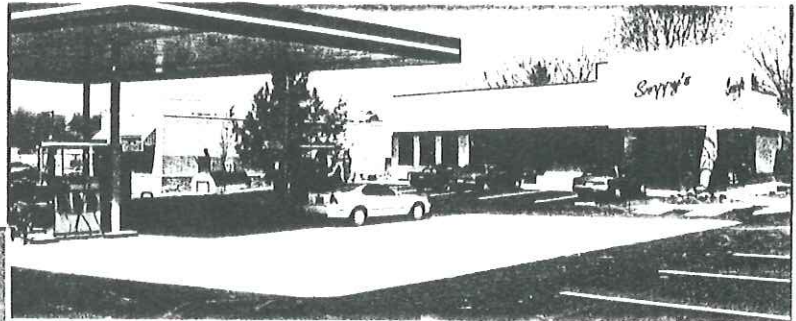
**Snappy's**

**CONVENIENCE MARKET**

**AMOCO GAS**

\*\*\*\*\*

**OPEN DAILY 24  
HOURS**



**Fresh Pastries \* Fresh Bagels \* Hot Stuff Pizza \* Subway Subs**

■ Locations at 1209 No  
Intersection of

age \* 235-1470 and  
\* 684-5240



# UNI-MART CLASSIC 1997

<b>Table of Contents</b>					
Snappy's Ad	Inside Cover	North Squad	12	Centre Daily Times Ad	36
President's Message	1	Patrons	13	Where are They Now?	36
1997 Hall of Fame Inductees	1	Classic Financial Statement	13	Business Card Ads	37
State College Area Booster Club Ad	2	Penns Valley Booster Club Ad	14	District 6 & 9 Champions	37
MVP's and Classic Summaries	3	Indian Caverns Ad	14	Business Card Ads	38
1996 Centre Daily Times Classic write-up	4	North Squad	15	Indian Valley Booster Club Ad	39
Bellefonte Booster Club Ad	5	North Squad	16	Bucktail Booster Club Ad	40
Player Selection Procedure	6	Bald Eagle Nittany Booster Club Ad	17	South Squad	40
Special Thanks	6	1987 Classic Player--North	18	South Squad	41
All-Star History	7	Business Card Ads	18	Business Card Ads	42
Philipsburg-Osceola Booster Clubs Ad	7	1987 Classic Player--South	19	Hollidaysburg Booster Club Ad	43
Tyrone Booster Club Ad	8	Business Card Ads	19	South Squad	43
Lewistown Booster Club Ad	9	DuBois Booster Club Ad	20	South Squad	44
Moshannon Valley H. S. Cheerleaders	9	WRSC Ad	21	Jostens Ad	45
Uni-Mart Ad	10	North Roster	22	Game Rules	Back Cover
North Squad	11	South Roster	23		
				24	Claysburg-Kimmel Booster Club Ad
				25	Curwensville Booster Club Ad
				25	DeMans Ad
				26	Tyrone Area High School Cheerleaders
				26	Lock Haven Booster Club Ad
				27	Huntingdon Booster Club Ad
				28	Clearfield Booster Club Ad
				29	Business Card Ads
				30	Scholarship Winners
				31	Previous Coaching Staffs
				32	Central Booster Club Ad
				33	Moshannon Valley Booster Club Ad
				34	Bellwood-Antis Booster Club Ad
				35	CPFCA District Champions
				36	Big 33 Ad

## PRESIDENT'S MESSAGE

Having come to the conclusion of my seasons' term as President of the CPFCA, I take pride in the great strides that our Association has made. Thousands of dollars in scholarship money have been and are continuing to be made available to student athletes. A successful "Film Festival" has been a key to collegiate exposure for our athletes. Hundreds of our players have participated in the well-organized College Prospect Camp held on the Penn State campus. And the Uni-Mart Classic all-star game itself has developed into one of the finest games of its kind in the State. All these things have been accomplished by coaches past and present, the help of sponsors and you the fan.

Support your high school coaching staff, encourage a youngster to be involved in his high school football program and recognize the great values of commitment, discipline, and cooperation that high school football offers.

Tim Janocko  
Clearfield High School  
CPFCA President

### 1997 CPFCA OFFICERS

**President** -Tim Janocko, Clearfield  
**Vice-President** -John Franco, Tyrone

**Secretary/Treasurer** -Rob Irwin, Bellefonte Area  
**Game Director** -Jack Bailey, Philipsburg-Osceola

## CENTRAL PENNSYLVANIA COACHES ASSOCIATION COACHES HALL OF FAME

### Jack Bailey — Philipsburg-Osceola

Over twenty years association with scholastic football as Head Coach at West Branch and Assistant Coach/Head Coach at Philipsburg-Osceola. Served as Secretary/Treasurer for the Coaches Association from 1984-1991 helping establish the Football Classic. In addition, he was an Assistant Coach in the 1985 Classic and North Head Coach in 1988. Jack has been the Game Director for the Uni-Mart the past two years.

### Bill Vroman — West Branch

Bill has coached scholastic football as Head Coach at Alomosa, Colorado and Assistant Coach/Head Coach at West Branch Area. In addition, he coached at the collegiate level at Mansfield State College and Millersville State College. While at West Branch, he was also the Head Baseball Coach and Athletic Director. Bill served as an assistant coach for the North Squad in the 1989 and 1991 Mid-State Classics. Bill was inducted into the Clearfield County Regional — Pennsylvania Sports Hall of Fame in 1996.

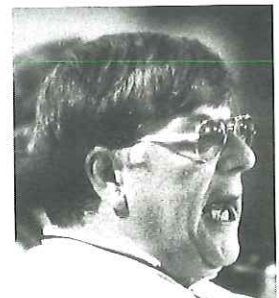
### Previous Inductees to the CPFCA Coaches Hall of Fame

1995 J. Gawen Stoker -- Bald Eagle Area

## DISTINGUISHED COACHES FROM CPFCA SCHOOLS BEING INDUCTED TONIGHT

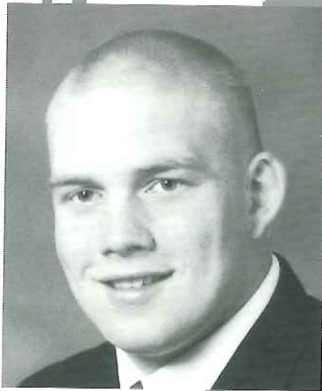


**BILL VROMAN**  
West Branch Area

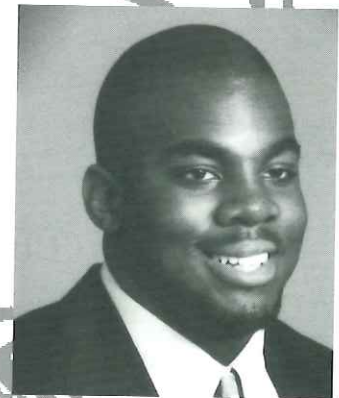


**JACK BAILEY**  
Philipsburg-Osceola

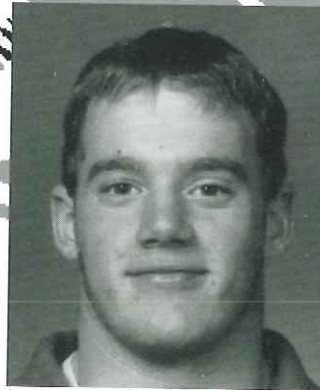
# **The State College Football Booster Club Congratulates**



**#70 Ray A. Ghaner**



**#33 Patrick Nixon**



**#32 Mark Hagen**

**on their selection to the  
Uni-Mart Classic and wishes  
them the best of luck in the future.**



# Uni-Mart and Mid-State Classic Summary

Year	Score	Most Valuable Performance	
		Offense	Defense
1985	South 14 North 13	Joe Irwin <i>Bishop Guilfoyle</i> Keith Powell <i>Philipsburg-Osceola</i>	George Zlupko <i>Altoona</i> Bill Andrus <i>Bellefonte Area</i>
1986	North 29 South 20	Bill Hesketh <i>Kishacoquillas</i> John Carey <i>Bishop Guilfoyle</i>	Bob Shea <i>Curwensville</i> Craig Sellers <i>Huntingdon</i>
1987	South 23 North 21	Rick Hoover <i>Altoona</i> Doug Sieg <i>Bellefonte Area</i>	Cord Ferrari <i>Huntingdon</i> Tom Bowser <i>State College</i>
1988	South 28 North 13	Matt Koehle <i>Bishop Guilfoyle</i> Tim Fritz <i>Lock Haven</i>	Mike Cheslock <i>Altoona</i> Brent Dunmire <i>Lewistown</i>
1989	North 12 South 3	Jim Renninger <i>Bald Eagle Nittany</i> Dave Hensor <i>Juniata Valley</i>	Bob Oakes <i>State College</i> Mike Koehle <i>Bishop Guilfoyle</i>
1990	North 31 South 22	Bruce Graham <i>Clearfield</i> Dave Wyland <i>Holidaysburg</i>	Todd Hardy <i>Bellefonte Area</i> Lew Buddy Tress <i>Mount Union</i>
1991	South 7 North 3	Chris McCartney <i>Bellwood-Antis</i> Wade Kurzinger <i>Bald Eagle Area</i>	Eric Bernatsky <i>Purchase Line</i> Bill Stringfellow <i>Bald Eagle Nittany</i>
1992	North 7 South 6	Don Gentzyl <i>Bucktail</i> Matt Kemmerer <i>Punxsutawney</i>	Brian Carper <i>Penns Valley</i> Karl Montanaro <i>Bellwood-Antis</i> Brett Rankin <i>Punxsutawney</i>
1993	South 15 North 5	Ferdie Vaughn <i>Mount Union</i> Jeff Nixon <i>State College</i>	Norm Huddy <i>Punxsutawney</i> Shanon Manning <i>Penns Valley</i>
1994	South 18 North 7	Tom Snyder <i>Mount Union</i> Brandon Knarr <i>Lock Haven</i>	Dave Berkhimer <i>Claysburg-Kimmel</i> Joe Frank <i>Philipsburg-Osceola</i>
1995	North 39 South 26	Chad Kroell <i>Clearfield</i> Wes Green <i>Huntingdon</i>	Scott Latosky <i>Moshannon Valley</i> Jason Showwalter <i>Juniata Valley</i>
1996	South 23 North 21	Ryan Hostler <i>Bellwood-Antis</i> Tim Kail <i>DuBois</i>	Jason Evans <i>Huntingdon</i> Mike Kemmerer <i>Bald Eagle Nittany</i>

# South picks off North hopes

## South picks off five passes, blocks last-second field goal in Uni-Mart Classic

By Chris Rosenblum, Centre Daily Times

Altoona — Whoever first said the best defense is a good offense got it backwards.

Struggling on offense for most of the 12th annual Uni-Mart Football Classic, the South intercepted the North five times, including three by Huntingdon's Jason Evans, and blocked a last-second 34-yard field goal by Lock Haven's Travis Forney to win 23-21 Saturday at Mansion Park.

Forney actually got two tries to snatch victory from defeat. After Tim Long nailed a 29-yard field goal with 1:11 left and Evans nabbed DuBois' Tim Kail's desperate heave at the South's 33, the contest looked over.

But Long shanked an eight-yard punt after the South ran down the clock, giving the North the ball at the 34 with only a few ticks on the clock. Forney then left his 49-yard attempt short, and the South supporters cheered.

However, the yellow flags appeared — roughing the kicker. Forney lined up again, but a wave of red jerseys smothered the kick to preserve the victory.

"When we lined up for the second field goal, I thought we were going to win," North coach Howie Camberg said. "There wasn't any doubt in my mind that Travis wasn't going to make it, but the South came up with a big defensive play."

The block may have been more dramatic, but Evans thievery cut the heart out of the North's offense in the second half and fueled the South's comeback from a 14-7 halftime deficit. Normally a cornerback, Evans robbed State College's Steve Weaver (3-10, TD, four interceptions) twice from the free safety position in addition to Kail (4 for 9, one touchdown), the North's offensive MVP.

"I think we found his best position, no doubt," South coach John Franco said.

Evans deferred credit to his teammates.

"If it wasn't for our front seven on our defense, if they hadn't stopped the run, then they would have never had the opportunities," he said.

The North struck first with 8:30 left in the first quarter when Weaver connected over the middle with Bald Eagle Area's Jeff Bucha for a 27-yard touchdown strike.

Forney's extra point was good, and the North led 7-0.

The South then drove to the North's 21-yard line before coughing up the ball on a botched snap to Bald Eagle Nittany's Mike Kemmerer, the North's defensive MVP.

The North went right back to work, scoring six plays later on Kail's 15-yard heave to DuBois' Greg Kennis, who made a nice juggling catch.

The South had two chances to get on the board in the second quarter with field goal attempts by Long. But his 60-yard attempt dropped well short, and West Branch's Terry Smeal blocked his 49-yard try.

But the South hit paydirt when Bellwood-Antis' Ryan Hostler fielded a punt on his 19 with 22 seconds in the half, broke several tackles cutting across the field and streaked down the left sideline for the score.

Hostler also ran 31 yards and was named the South's offensive MVP. The North looked fully in control when Kail ran in from the six to make the score 21-7 with 9:09 in the third quarter.

But Tyrone's Lucas Rhoades grabbed an errant Weaver pass and returned it 30 yards to make the score 21-14 with 11:49 left in the fourth quarter.

The North gave up the ball on downs the next possession and the South capitalized with a 20-yard toss from Williamsburg's Ben Gunnnett to Bishop Guilfoyle's Lucas Kelleher, one of his six receptions.

Long, however, missed the extra point wide left, giving him a chance to redeem himself with his game-winning boot.

"It was really two halves of football," Camberg said. "In the first, our offense clicked with the passing attack, and in the second, we had too many turnovers."

<b>North</b>	<b>14</b>	<b>0</b>	<b>7</b>	<b>0</b>	<b>21</b>
<b>South</b>	<b>0</b>	<b>7</b>	<b>0</b>	<b>16</b>	<b>23</b>

### First Quarter

North: Bucha 27 (Weaver) (Forney kick) 8:30

North: Kennis 15 (Kail) (Forney kick) :22

### Second Quarter

South: Hostler 81 punt return (Long kick) :22

### Third Quarter

North: Kail 6 run (Forney kick) 9:09

### Fourth Quarter

South: Rhoades 30 int (Long kick) 11:49

South: Kelleher 20 from Gunnnett (kick missed) 6:10

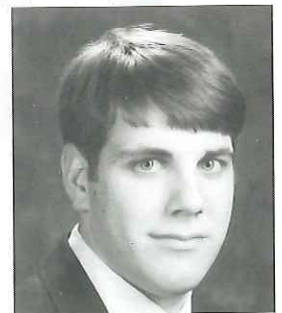
South: Long 29 FG 1:11



# BELLEFONTE RED RAIDER BOOSTER CLUB CONGRATULATES



**#75 Ben Boldin**



**#5 Benjamin Adam  
Hardy**

**and wishes them continuing success**

# PLAYER AND COACHES SELECTION

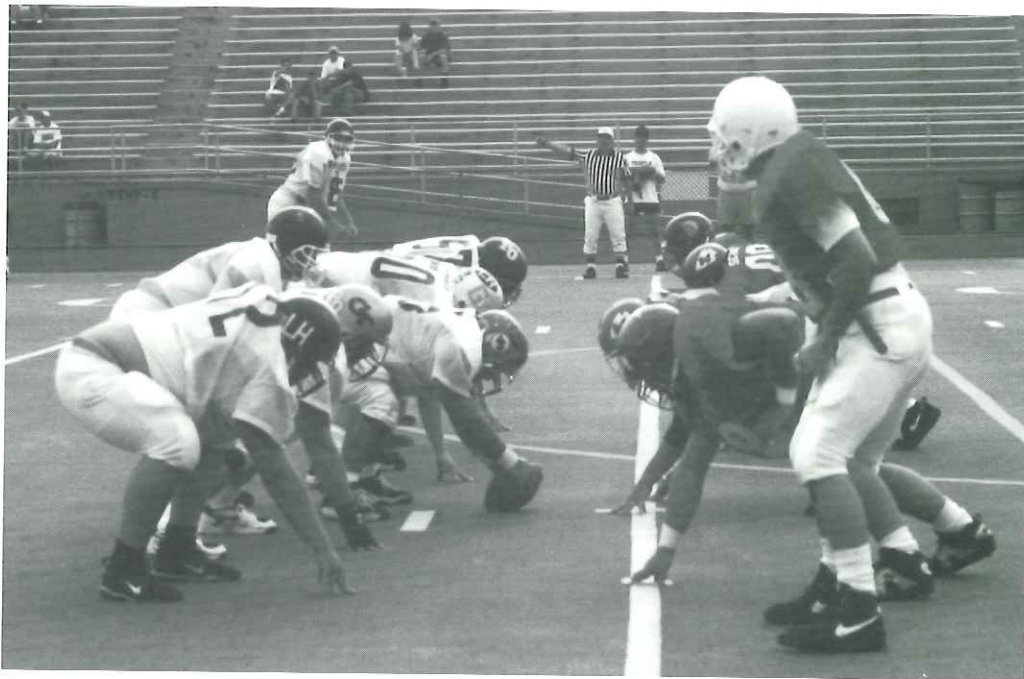
Players and coaches are selected for the game by members of the Central Pennsylvania Football Coaches Association. They require that a representative attend a minimum of three CPFCA meetings before a player is eligible. Players from schools failing to meet the minimum participation requirements are not eligible for the following year.

## Player Selection:

1. Graduating Senior players are nominated in writing by their head coach in December.
  - a. Each school may have no more than five players participate.
2. Players nominated are polled to ascertain that they will participate if selected.
3. Coaches from schools in each division review the nominated players and the forty players are selected by a consensus of the selection committees. (A player from each eligible school will be selected to participate in the game.)

## Coach Selection:

1. Members of the association select the coaching staff from member schools in each division -- North and South.
2. The coaching staffs for each division consist of a Head Coach and five Associate Coaches.



## Special Thanks to These and Others Who Give Special Help

The Boards of Education, Administration, Facilities Maintenance, and Coaching Staffs at Altoona and Bellefonte Area

Al Crafts & Al Bonsell-- Professional Video Services

Bob Bish -- Game Photographer

Uni-Marts, Inc., Marketing and Community Relations Staff

Larry Suhey, Balfour Co. -- Awards

Jeff Byers -- Radio/Video Play-by-Play

John Wetzler -- Radio/Video Play-by-Play, Color

Tom Fallon -- Radio/Video Play-by-Play -- Sidelines

Linda Palochko

Grove Printing -- Bellefonte

Athletic Training Supplies provided by Sports & Orthopedic Specialist / Don Joy,  
Don Joy Sales Representatives: Mark Freeman and Dan Pahls



# A Classic History

Previous Central Pennsylvania All-Star Football games such as the 1960 Central Counties and the 1977-78 Lewistown Lion Club were great football games, but were short lived.

In 1985, the Central Pennsylvania Football Coaches Association, with J. Gawen Stoker as the Game Director, initiated the Mid-State Classic under the corporate sponsorship of the Mid-State Bank. The game was established to promote scholastic football, to recognize excellence of our players and coaches, to provide a system of ongoing football education for our coaching staffs, and to fund a scholarship program. The first game involved players from twenty-five schools.

In 1993, Uni-Mart, Inc. became the major sponsor for the Classic with the CPFCA maintaining the football and organizational aspects of the game. Currently, there are thirty schools from District VI and IX involved in the game. To date, \$37,000 in the form of seventy-four scholarships have been awarded to help young people continue their education. The CPFCA holds monthly mini-clinics for high school and youth coaches during the winter months. To the players and coaches, being selected to participate in the Classic is held in high regard. It would seem that the goals for the Classic are being realized. The degree to which the game and the CPFCA can work toward these goals will depend upon the support we continue to receive.

The Uni-Mart Classic is considered as one of the premiere all-star football games in Pennsylvania. It is a tribute to our sponsors and co-sponsors, to the individual players sponsors, the business card and patron sponsors, and to families and friends of scholastic football in the Central Pennsylvania region.

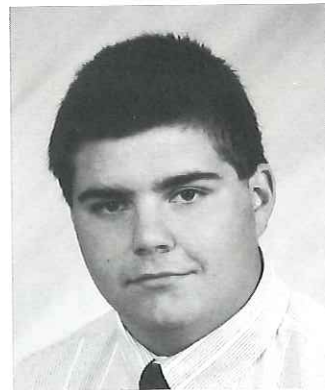
*YOU MAKE IT ALL WORK!*

---

## WE'RE MOUNTIE PROUD OF



**#72 Eric Johnson**



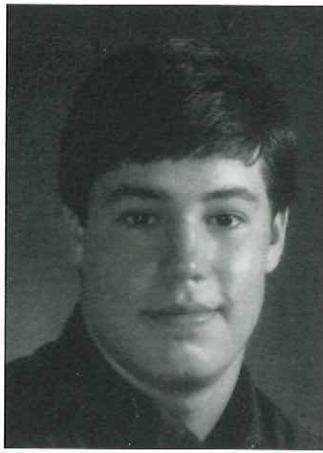
**#53 William Long**

**Wishing continued success for the  
UNI-MART CLASSIC  
and Good Luck to the '97 MOUNTIES**

**Compliments of the Philipsburg-Osceola  
Quarterback Club and MOM's Club**



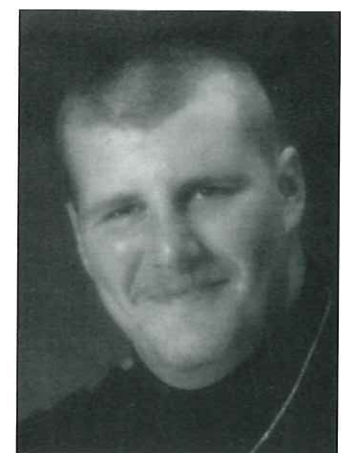
**#67 Justin Ditty**  
 Bucktail  
 Nestlerode Contracting  
 Co., Inc., Lock Haven



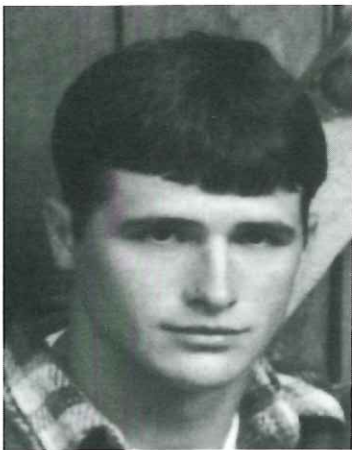
**#62 Corby Fetterolf**  
 Penns Valley  
 Con-Stone, Inc.,  
 Aaronsburg



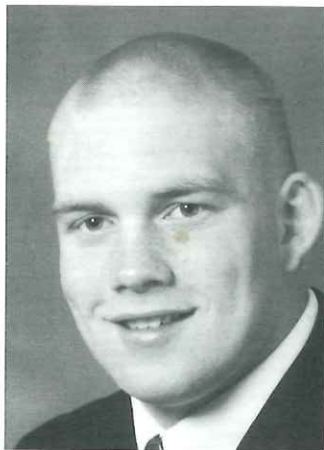
**#10 Justin W. Finalle**  
 DuBois  
 Gateway Cafe, D#4



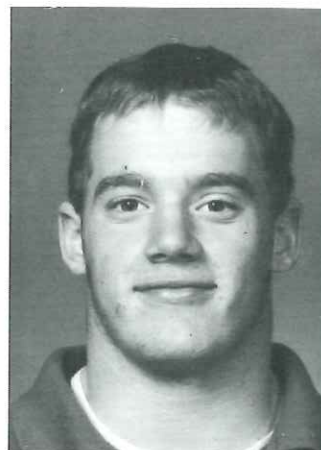
**#66 Brian Gallagher**  
 DuBois  
 Plumbers & Pipe Fitters  
 Local Union 354



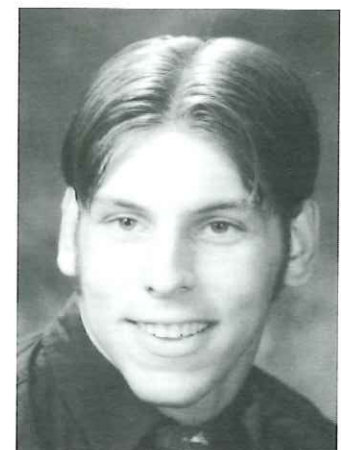
**#30 Dennis Getz Jr.**  
 Bucktail  
 K & L Auto Sales, Inc.  
 Dremel's Sunoco



**#70 Ray A. Ghaner**  
 State College  
 Weis Markets,  
 Martin St.



**#32 Mark Hagen**  
 State College  
 Hoss's Steak &  
 Sea House

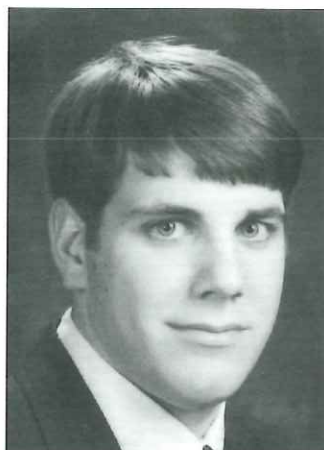


**#40 Phillip Hanley**  
 Bald Eagle Nittany  
 Steven W. Geise, D.O.

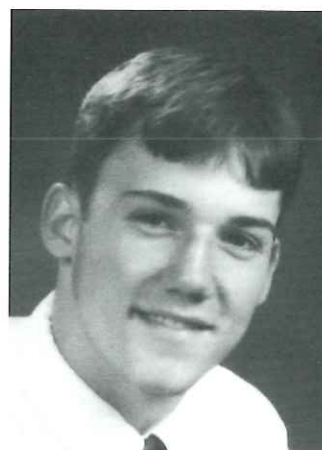


**#86 Joe Hanna**  
 Lock Haven

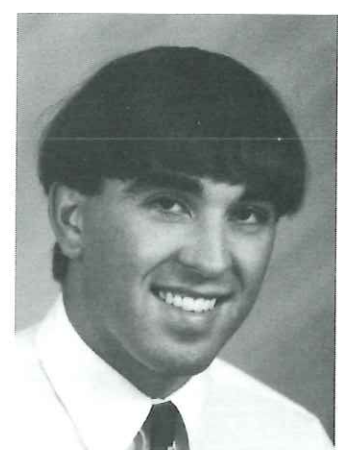
Daniel L. Vitello Cl. Co. Com.  
 Weaver & Probst, Mann Garage  
 Mike Hanna State Representative  
 12 Donald Walker Cl. Co. Corner



**#5 Benjamin Adam  
 Hardy**  
 Bellefonte Area  
 Eby Paving &  
 Construction, Inc.



**#14 Matt Heintz**  
 Lock Haven  
 Hanna Electric, Inc.,  
 Lock Haven



**#26 Kyle Hubler**  
 West Branch  
 White Distributing Co.



## CLASSICAL FINANCIAL STATEMENT

How are the funds raised?  
Where does the money go?

The Central Pennsylvania Football Coaches Association (CPFCA) is recognized as a non-profit organization. The CPFCA has been the administrative organization promoting and conducting the Classic over the past twelve years. Annually the receipts and expenditures for the operation of the game are in the \$25,000 to \$30,000 range.

There are three avenues of revenue for the Classic -- 1) individual player sponsors provide for the one-third of the funds, 2) Game Sponsor and Co-Sponsors contributions equate to one-fourth of the revenue, and 3) the promotional component, including advertisers, business card and patron sponsors, sale of promotional items such as hats, T-shirts, and game program, video, and ticket sales constitutes the remainder of the revenues.

On the expenditure side, player expenses including game jerseys, practice meals, player commemorative awards, insurance coverage, and scholarship awards account for forty percent of the costs. An additional forty percent of the expenses are related to field rental, game site personnel, purchase of promotional items, and game program printing costs. The rest of the expenses are associated with coaching expenses, promotional fees, and administrative costs.

Basically, the game is a result of efforts of individuals from the thirty schools comprising the Central Pennsylvania region working for continued success of the Uni-Mart Classic.

## PATRONS

Barry & LeAnn Anderson  
Congratulations D.J. We are proud of you. Love Dad, Mom,  
Hunky, Vinnie, Devin, Deena  
Donna Rotsch  
Roy & Betty Young  
Don & Jackie Friday  
Congratulations Justin Ditty. We are proud of you!! Love  
Mom, Dad, Brother s  
Good Luck Denny! We re proud of you! Dad, Amy,  
Brian, Matt & Megan  
Jack & Becky Davis  
Mick, Sandi, Eric, & Jared Murnyack  
Mr. & Mrs. Bruce Cafferty & Family  
Steve Smitchko, Sr.  
Jim & Dolores Noerr  
Tom, Karen & Gina Soccio  
Robert M. Jones Jr. -- Jones Funeral Home  
Mr. & Mrs. Donald McIntyre  
John Mannion  
Bishop Guilfoyle Athletic Department  
Jim Hennaman  
Fred Piper  
Jack & Carla Bailey  
Sam, Patty, Jessica, & Mike Marrara  
Howard & Diana Johnston  
Dick & Peg Ingram  
Thomas, Shirley & Amy Boldin  
Greg & Shelley Thompson  
Mr. & Mrs. Lloyd Cavanaugh  
Ed & Janice Long  
John, Toni, & Kristie Nixon  
Weis Markets, Mark Mills  
J.P. & Susan Hanna  
Rob & Bethany Irwin and Kids  
Michael & Barbara Rends  
Michael & Patty Wood  
Mike, Jackie & Scott Long  
George Bailey (GW Computer Serv.)  
Dennis & Rosalie Fetterolf  
John, Bobbie Jo, & Samantha Gallagher  
Derrill & Sandre Ghaner  
Allen & Ethelene Giles--  
Clearview Camp Grounds  
Anthony Owens, Sr.  
Clark & Ruth Hubler  
Gary & Madalyn Hubler

# PENNS VALLEY RAMS BOOSTER CLUB CONGRATULATES



#62 CORBY  
FETTEROLF

and wishes the '97 Football team  
the best of luck in the upcoming season

EXTENSIVE SCENIC BEAUTY    AUTHENTIC INDIAN HISTORY    A REAL INDIAN CAVERN



**WORLD FAMOUS  
INDIAN CAVERNS  
SPRUCE CREEK, PA.**

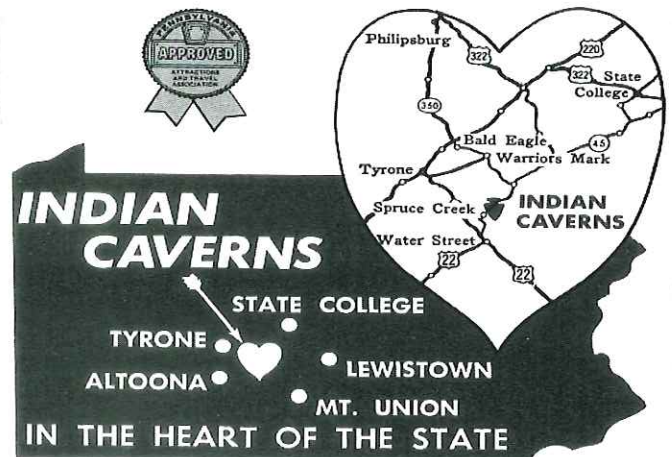
**GUIDED TOUR SCHEDULE (Rain or Shine)**

OPEN DAILY 9 am to 4 pm MAY 30 THROUGH LABOR DAY  
OPEN DAILY 9 am to 4 pm APR. MAY. SEPT. OCT  
CLOSED NOVEMBER THROUGH MARCH

PHONE (814) 632-7578 OR WRITE:  
INDIAN CAVERNS, SPRUCE CREEK, PA 16683

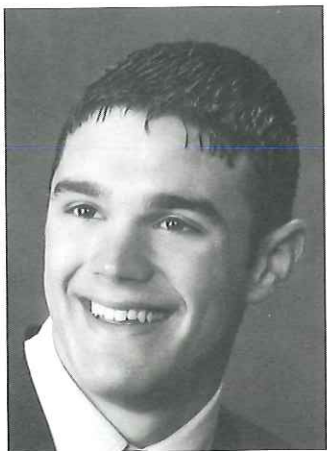
Group rates are extended to pre-arranged groups of 20 or more.  
**Regular admission;** Adults \$8.00 Children \$4.00 twelve years  
old or younger.

**Group Rates;** Adults \$6.00 Children \$3.00 This rate applies to all  
who are with the group, such as relatives, chaperones or "tag alongs".

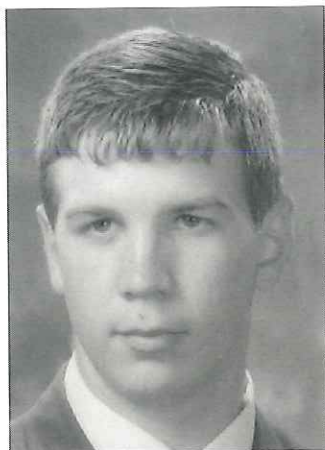


**INDIAN CAVERNS**  
STATE COLLEGE  
TYRONE  
ALTOONA  
LEWISTOWN  
MT. UNION  
IN THE HEART OF THE STATE





**#4 Justin T. Ingram**  
Clearfield  
Laurance & Susan  
Seaman



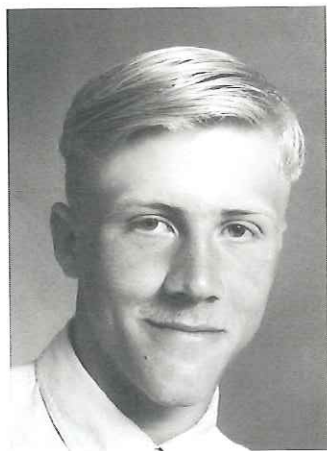
**#38 Kerry Jodon**  
Bald Eagle Area  
Floor Covering Installation  
Rick's Cover Up



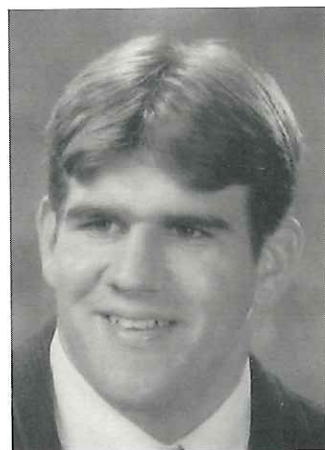
**#72 Eric Johnston**  
Philipsburg-Osceola  
Philipsburg True Value  
Mitchell Oil



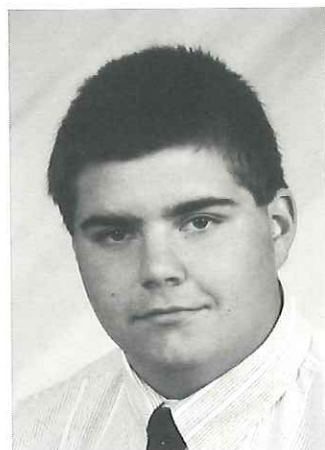
**#7 Eric Kaufman**  
Clearfield  
Clearfield Dairy Queen



**#22 Michael Keith**  
Moshannon Valley  
Howard's Bi-Lo Foods



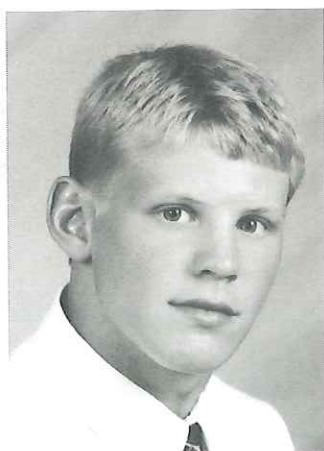
**#42 Chad Koleno**  
Bald Eagle Area  
Hoy Transfer, Inc.



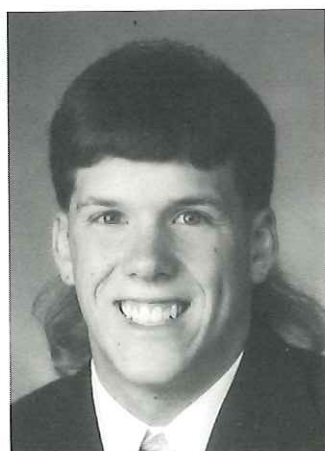
**#53 William Long**  
Philipsburg-Osceola  
Waterwise Pool Co.,  
Philipsburg



**#94 Brandon Marshall**  
DuBois  
TCBY Treats, DuBois



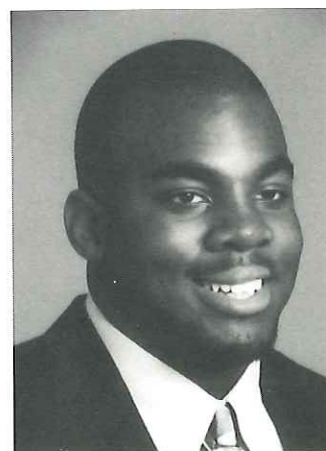
**#20 Josh McBride**  
Curwensville  
Warquier Coal Co



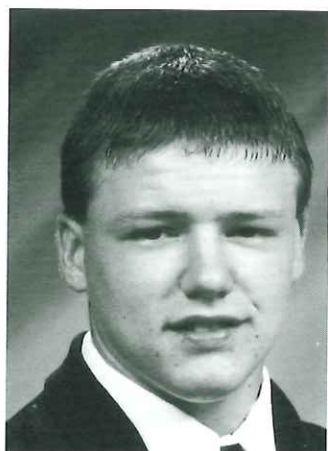
**#25 Paul McClellan**  
Glendale  
Glendale Quarterback  
Club



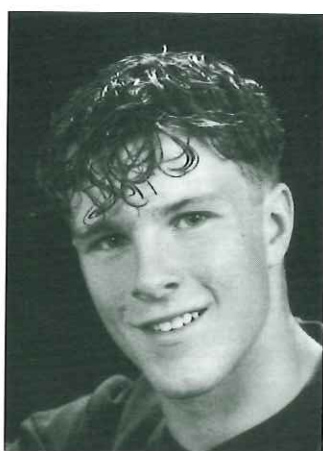
**#76 Michael Murnyack**  
Bald Eagle Area  
Smitchko Tool &  
Die, Inc.



**#33 Patrick Nixon**  
State College  
Damon's Restaurant



**#1 D.J. Perry**  
 Bucktail  
 Renovo Automotive &  
 Pro Hardware



**#64 Bill Raab**  
 Moshannon Valley  
 Looking Good Beauty  
 Salon, Philipsburg



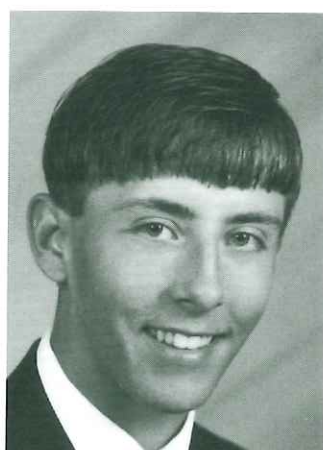
**#47 Michael Rendos**  
 Lock Haven  
 Rick's Auto Sales,  
 Lock Haven



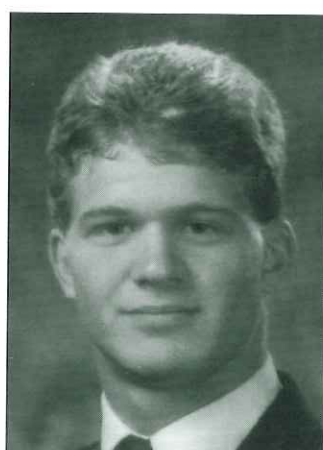
**#63 Josh Robison**  
 Moshannon Valley  
 Kitko Wood Products,  
 Glen Hope



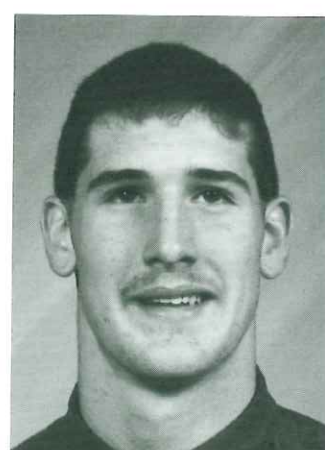
**#55 James Rosman**  
 DuBois  
 Rossi Fine Jewelers



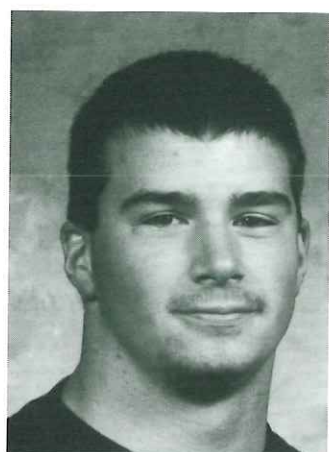
**#2 Chris Tekely**  
 Moshannon Valley  
 Jim's Sports Center,  
 Clearfield



**#99 Jade V. Thompson**  
 Bald Eagle Area  
 Hall's IGA



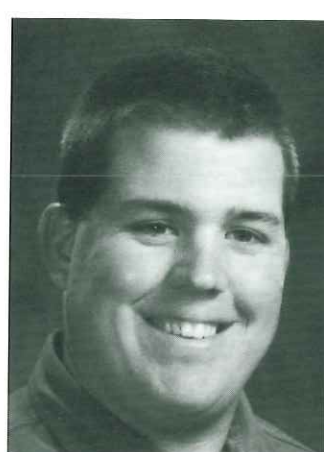
**#91 Phillip Turner**  
 Curwensville  
 Snack Shack &  
 Blue Kow



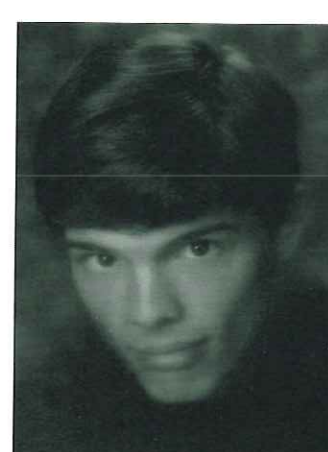
**#61 Gary T. Waroquier**  
 Curwensville  
 Waroquier Coal Co.



**#8 Shawn Weaver**  
 Bald Eagle Nittany  
 Watt's Family Restaurant,  
 Logantown



**#58 Chad M. Wolfe**  
 Lock Haven  
 Hanna Electric, Inc.,  
 Lock Haven



**#24 Philip Wood**  
 West Branch  
 Larson Enterprises, Inc.,  
 Kylertown



# **THE BALD EAGLE NITTANY QUARTERBACK CLUB**

*Salutes*

## **TWO OUTSTANDING ATHLETES**



**#40 Phillip Hanley**

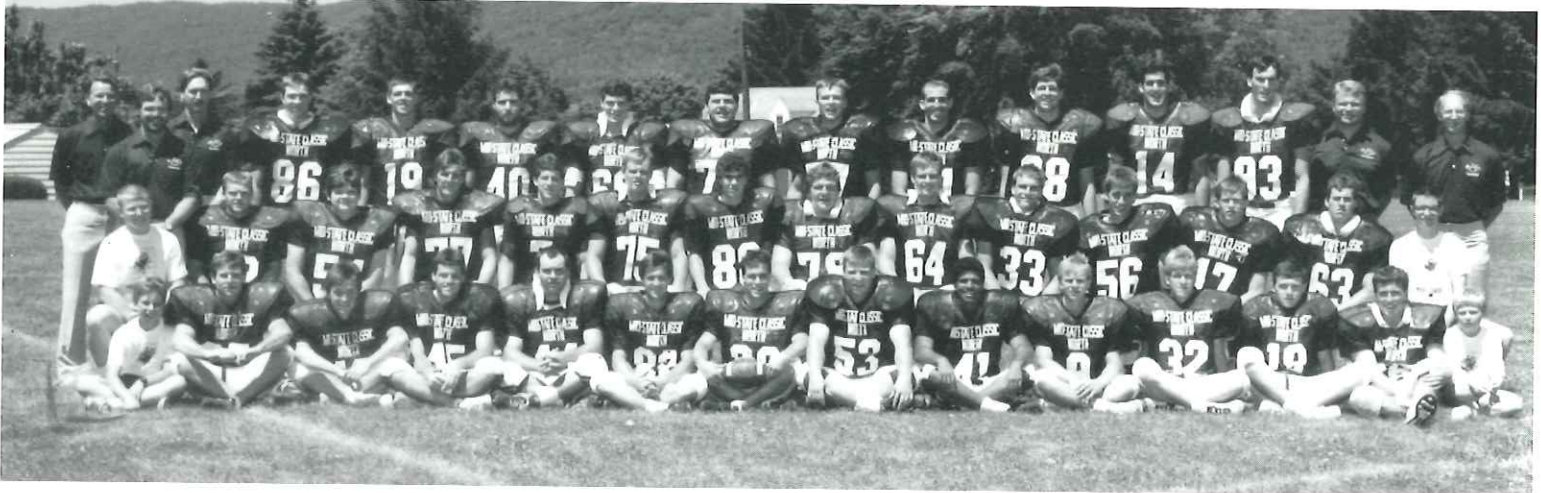


**#8 Shawn Weaver**

**BEST OF LUCK to the NORTH SQUAD**

**PANTHER PROUD**

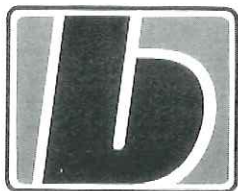
# 1987 Classic Roster--North



Seated left to right: Chris Achuff (manager) , Rick Metzger (PO), Nic Allison (Lewis.), Chris Dixon (Clear.), Rick Ennis (BEA), Eric Bjalme (Bell.), Mike Alterio (Bell.) Tim Pavlechko (SC), Dan Lynch (Clear.), Mark Luther (WB), Steve Shedlock (P-O), Mike Leister (Chief), Bob Raible (BEN), Jeff Wetzler (manager).

Middle Row: Aaron Pavlechko (manager), Mike Saxton (Lewis.), Brent Kephart (P-O), Joe Ceprish (WB), Terry Powers (PO), Kenny Walker (Bell.), Stuart Hall (BEA), Tracy Mackey (LH), Larry Walker (Bell.), Terry Jordan (Clear.), Allen White (Clear.), John Johnson (Cur.), Dave Carter (Cur.), Chip Jodon (manager).

Standing: Dick Bell (Bell.-Asst. Coach), John Wetzler (Bell.-Head Coach), Tim Janocko (Clear.-Asst. Coach), Brian Robison (Clear.), Scott Tobias (PV), Bob Jozefick (BEA), Dave Eisenhooth (BEA), Rich Corl (PV), Tom Bowser (SC), Jim Scourtis (SC), E.J. Sandusky (SC) Doug Sieg (Bell.), John Mickey (SC), Ron Pavlechko (SC-Asst. Coach), Ken Achuff (Bell.-Asst. Coach).



**boyer**  
Refrigeration  
Heating • Air Conditioning

P.O. Box 130, Bellwood, PA 16617  
Bus: (814) 742-7234/942-2106 Fax: (814) 942-7044

GENERAL REPAIRS • CUSTOM PIPE BENDING



**McCracken's Garage**  
EXHAUST SYSTEMS OUR SPECIALITY

PHONE  
814-742-8145

601 MAIN STREET  
BELLWOOD, PA 16617

**GOOD LUCK**

**JOE and DAVE**

**PUNXSUTAWNEY COACHING  
STAFF**

**All Star Football. Cool.**



**Play to win Taylor!**





# 1987 Classic Roster--South



Seated left to right: Nate Isenberg (manager), Don Myers (Hunt.), Steve Glenly (JV), Rick Hoover (Alt.), Harvey Norris (Tyr.), Lance Miller (Tyr.), Roger Branstetter (Tyr.), Scott Slippey (JV), Brian Stayer (Alt.), Jeff Vroman (Mo-Val.), Steve Claycomb (Clays.), Jon Ludwig (manager).

Middle Row: Bob Rupert (JV-Asst. Coach), Rich Laing (Glen.), Jeff Kyper (JV), B.J. Fahr (Holl.), Steve Perry (B-G), Andy Holmes (Hunt.), Ryan Garlock (S. Hunt.), Mark Negley (Cent.), Brad Young (Williams.), Kevin Ferner (Tyr.), Bill Davis (Alt.), Sean Hoover (Hunt.), Tom Gibboney (Hunt.-Asst. Coach).

Standing: Tom Miller (Tyr.-Asst. Coach), Bill Weyandt (Alt.), Kurt Schmidhamer (B-G), Doug Garber (Cent.), Mark Loucks (Cent.), Erick Kozak (Holl.), John Smith (Glen.), Shawn Bailey (B-A), Steve Weyer (Tyr.), Mike Zinobile (S. Hunt.), Mike Smith (JV), Jack Krider (Cent.-Asst. Coach), Bill Clouse (JV-Head Coach).

Not in Photo: Jack Dorminy (B-A), Pat Hart (Hunt.), Cord Ferrari (Hunt.).

## PROUD POOCHES OBEDIENCE TRAINING



One-On-One Private Lessons  
Dogs 12 Weeks & Up • No Physical Punishment  
Free Puppy Tips

717-242-3484

Fax 717-242-6491

## Miller Welding Service



*Aluminum	*Stainless Steel	*Structural Steel
*Fabrication	Portable Equipment	*General Repairs

Robert E. Miller, Jr.  
owner

RD #1 Box 809  
Petersburg, PA 16669  
(814)667-3443

1831 W. College Ave.  
State College, PA 16801  
Ph./Fax (814)238-2950

## BILLETT'S MARKET SUBS, SANDWICHES, & DELI

33 S. Main Street., Reedsville, Pa. 17084 (717) 667-2286

- Variety of hot and cold sandwiches
  - Different kind of soup everyday (except Sat. & Sun.)
  - Grocery items
  - Vacuumed-packed hamburger, sausage & porkchops from Myers Meats of Spring Mills
- OPEN:** Monday thru Thursday 6 A.M. - 9 P.M.  
Friday 6 A.M. - 10 P.M. Saturday 7 A.M. - 10 P.M.  
Sunday 8 A.M. - 9 P.M.
- CALL AHEAD TO PLACE YOUR ORDER

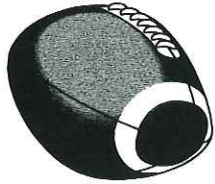
## ROBERT E. FLECK & ASSOCIATES LTD

Tracey J. Childers  
Vice President & Executive Director

814/231/3717  
800/428/8105  
Fax: 814/231/2256

270 Walker Drive / Suite 101 / P.O. Box 259 / State College, PA 16804

# DuBois Area Football Boosters Congratulates our Uni-mart Classic



# All Stars !



**Chris # 15**

Son of Sam Marrara and  
Barb Bennett



**Justin # 10**

Son of Paula & Wes Finalle



**Brian #66**

Son of Bobbie &  
John Gallagher



**Brandon # 89**

Son of Lance &  
Debbie Marshall



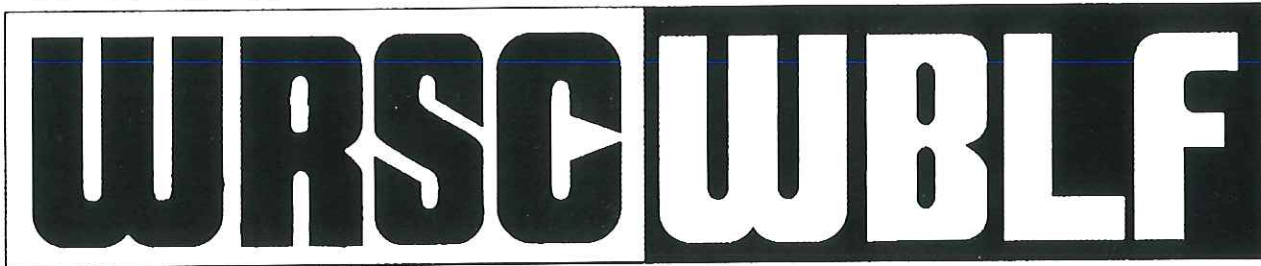
**James #55**

Son of Bill & Nancy Pringle

# Good Luck !



NEWS • TALK • SPORTS



1390 AM • WRSC NEWSCHANNEL 54 • 970 AM

Jeff Byers and the WRSC/WBLF  
Sports team...

Your #1 Source for Sports

Sportsline

Centre County's only live local sports talkshow  
5:30 - 7PM

One on One Sports

Papa Joe keeps the sports talk going.  
weekdays from 7 - 10PM

ESPN Sports

The number one name in sports  
Saturday and Sunday nights

and WRSC/WBLF is home for Penn State  
and High School Play-by-play.

# NORTH ROSTER 1997

No.	Name	School	Ht.	Wt.	Off.	Def.	Future Plans	Degree/program
1	D.J. Perry	Bucktail	5'8"	140	QB	DB	Undecided	
2	Chris Tekely	Moshannon Valley	5'9"	150	SE	C	Gannon	Physical Therapy
4	Justin T. Ingram	Clearfield	6'2"	190	TB	LB	PSU	Undeclared
5	Benjamin A. Hardy	Bellefonte Area	6'3"	210	QB	DB	Gettysburg	Undeclared
7	Eric Kaufman	Clearfield	6'	175	SE		College	Graphic Design
8	Shawn Weaver	Bald Eagle Nittany	6'2"	190	QB	LB	Old Dominion	
10	Justin W. Finale	DuBois	6'	200	QB	DE	Allegheny	Undeclared
12	J. R. Baughman	Moshannon Valley	6'2"	170	QB	DB	Bucknell	Civil Engineering
13	Christopher Bennett	DuBois	6'1"	175	TB	DB	PSU—DuBois	Metalology/El. Ed.
14	Matt Heintz	Lock Haven	6'2"	175	QB		Lycoming	Undeclared
20	Josh McBride	Curwensville	5'9"	165	TB		Shippensburg	Health Sciences
22	Michael Keith	Moshannon Valley	5'10"	155	TB	LB	St. Francis	Undeclared
24	Philip Wood	West Branch	6'3"	170	SE	DB	Lock Haven	Pre-Law
25	Paul McClellan	Glendale	5'11"	185	TB	LB	UPJ	Physical Therapy
26	Kyle Hubler	West Branch	5'9"	170	TB	DB	Lock Haven	Health Sciences
30	Dennis Getz	Bucktail	5'11"	190	TB	DB	Lock Haven	Undeclared
32	Mark Hagen	State College	5'9"	180	TB	LB	PSU	Architect. Engineering
33	Patrick Nixon	State College	6'1"	223	TB	LB	Lock Haven	Sec. Ed.—Social Sci.
38	Kerry Jodon	Bald Eagle Area	6'	170	RB	LB	Lock Haven	Undeclared
40	Phillip Hanley	Bald Eagle Nittany	6'	190	TB	LB	Lycoming	Criminal Justice
42	Chad Koleno	Bald Eagle Area	6'	185	QB	LB	Lock Haven	Education
47	Michael Rendos	Lock Haven	5'10"	170	FB	LB	Lock Haven	Criminal Justice
52	John Davis Jr.	Lock Haven	6'3"	210	OG	LB	Lock Haven	
53	William Long	Philipsburg-Osceola	6'2"	250	C	DT	Lock Haven	Sociology
55	James Rosman	DuBois	5'11"	200	OT	LB	St. Francis	Finance & Marketing
58	Chad M. Wolfe	Lock Haven	6'5"	280	OT		Lock Haven	Special Ed.
61	Gary T. Waroquier	Curwensville	5'11"	230	OG	N	Shippensburg	Business Admin.
62	Corby Fetterolf	Penns Valley	6'	210	OG	LB	Penn College	Landscaping/Turf Man.
63	Josh Robison	Moshannon Valley	6'2"	280	OT	DT	St. Francis	Environmental Sc.
64	Bill Raab	Moshannon Valley	6'1"	180	C	DE	Juniata	Chemical Engineering
66	Brian Gallagher	DuBois	5'11"	220	C	DT	St. Francis	Elementary Ed.
67	Justin Ditty	Bucktail	6'1"	235	OG	N	Lock Haven	Criminal Justice
70	Ray A. Ghaner	State College	6'3"	243	OT	DT	Juniata	Pre-Med.
72	Eric Johnston	Philipsburg-Osceola	6'	245	OT	DT	Lycoming	Undeclared
75	Ben Boldin	Bellefonte Area	6'4"	270	OT	DT	Clarion	Bus. Man.
76	Michael Murnyack	Bald Eagle Area	6'	225	G	DL	Work	Heavy Equipment
86	Joe Hanna	Lock Haven	6'3"	215	SE	DE	Colgate	Liberal Arts
91	Phillip Turner	Curwensville	6'5"	210	TE	DE	Marine Corps	
94	Brandon Marshall	DuBois	6'	220	TE	DE	Mansfield	Pre-Law
99	Jade V. Thompson	Bald Eagle Area	6'	190	TE	DE	PSU	Wildlife & Fisheries

Head Coach: Howie Camberg, Moshannon Valley  
 Assistant Coaches: Jerry Delucia, Moshannon Valley  
 Jeff Vroman, Moshannon Valley  
 Gary Hubler, West Branch  
 Ron Hoover, Bald Eagle Area  
 Bob Young, Bucktail

Trainers: Scott Devore  
 Scot Sechler (Game Day)  
 Ryan Grube (Game Day)

Team Physician: Dr. Kenneth Cherry  
 University Orthopedics



# SOUTH ROSTER 1997

No.	Name	School	Ht.	Wt.	Off.	Def.	Future Plans	Degree/Program
1	George W. Bailey Jr.	Altoona	6'1"	185	SE	DB	Edinboro	Physical Therapy
2	Matt Lehman	Central	6'1"	180	SE	DB	PSU	Engineering
7	Shawn M. Young	Huntingdon	6'2"	185	QB	DB	Juniata	Environ. Science
8	Steve Conlon	Bellwood-Antis	6'3"	180	QB	DB	Waynesburg	Elementary Ed.
9	Lanny L. Ramey Jr.	Mount Union	6'2"	160	QB	DB	St. Francis	Accounting
10	Jarrold Anderson	Tyrone	5'11"	160	QB	DB	Clarion	Elementary Ed.
11	Joe Hall	Punxsutawney	6'	190	QB	LB	Lock Haven	Undeclared
12	Benjamin S. Piper	Hollidaysburg	5'10"	187	QB	DB	PSU	Computer Engineering
16	Kyle Davis	Williamsburg	6'3"	160	QB	DB	West Chester	Criminal Justice
20	Shaun McIntyre	Bishop Guilfoyle	5'11"	165	SE	DB	PSU--Altoona	Business Admin.
21	Seth Soccio	Lewistown	6'3"	165	SE		Juniata	Psychology
22	Jerome Easter Jr.	Mount Union	5'10"	165	TB	DB	College	Physical Therapy
23	Andy Showalter	Juniata Valley	6'4"	205	QB	DB	Lycoming	Undeclared
26	Mark Goshorn	Southern Huntingdon	5'10"	160	FB	LB	York Tech.Inst.	Heating & Refrig.
27	George Eardley	Altoona	5'9"	170	TB	DB	Clarion	Environ. Sci/Geology
28	Bill Householder	Huntingdon	6'5"	195	TE	DT	Waynesburg	Criminal Justice
30	Marcus Owens	Tyrone	5'9"	162	TB	DB	Shippensburg	English
33	Mark Snyder	Mount Union	5'8"	180	FB	LB	St. Francis	Marketing
35	Lloyd Cavanaugh	Indian Valley	5'10"	210	TB	LB	Work	
36	Shaun T. Berkheimer	Altoona	6'	240	FB	LB	Cal. U. of PA	Criminal Justice
40	Randy Landrum	Huntingdon	5'7"	155	TB		Triangle Tech--DuBois	
46	Joey Kitt	Central	5'11"	180	TB		Shippensburg	Elementary Ed.
48	Tom Shaffer	Central	6'	185	FB	LB	Frostburg	History Ed.
50	Richi Fickes	Claysburg-Kimmel	6'	300	OT	N	Waynesburg	Computer Science
55	Luke Friday	Tyrone	6'4"	205	OG	DE	Lock Haven	Secondary Ed.
56	Travis Fortney	Bellwood-Antis	6'2"	275	C	N	PSU	Ag. Science
57	Eric Toggart	Hollidaysburg	5'11"	175	OG	LB	Franklin & Marshall	
61	Mark Condryn	Bishop Guilfoyle	5'9"	215	C	LB	UPJ	Undeclared
62	Jonathan Seiner	Tyrone	6'2"	230	C	DT	PSU	Nursing
64	Ray Rosenberry	Southern Huntingdon	6'	185	OG	DE	Shippensburg	Business Admin.
66	Randy Beers	Altoona	6'3"	275	OG	DT	Youngstown	Criminal Justice
68	Nate Musselman	Central	6'	220	OT	DT	Work/Military	Service
70	John Creuzberger Jr.	Hollidaysburg	6'3"	235	OT	DE	Juniata	Biology
71	Mike Hoover	Williamsburg	5'9"	250	C	DL	Bucknell	Chemical Engineering
73	David Rotsch	Punxsutawney	6'2"	240	OT	DT	Shippensburg	English Ed.
75	Karl Pisch	Indian Valley	6'3"	240	OT	DT	College	Police Science
82	Matt Johnson	Altoona	6'4"	250	TE	DE	Shippensburg	Sec. Ed.--English
86	Dennis Ritchey	Indian Valley	6'3"	185	TE	DE	PA Col. of Tech.	Ford Asset
87	Trevor Broadbent	Juniata Valley	6'3"	205	SE	DE	PSU--Altoona	Undeclared
99	Taylor B. Patterson	Huntingdon	6'2"	245	OG	DT	Fort Lewis Col.	Undeclared

Head Coach: John Franco, Tyrone  
 Assistant Coaches: Frank Baker, Southern Huntingdon  
 Dave Baker, Williamsburg  
 John McDonald, Bishop Guilfoyle  
 Willie Breon, Indian Valley  
 Richard Hatch, Tyrone

Trainers

Craig Sechler  
 Amy Geisemann  
 Seth Kinley

Team Physician:

Dr. Thomas Ellis  
 Joyner Sports Medicine Institute

# DISTRICT VI & IX FOOTBALL CHAMPIONS


YEAR	AAAA	AAA	AA	A
1985	*HOLLIDAYSBURG	FOREST HILLS	*BISHOP GUILFOYLE	HOMER CENTER
1986	JOHNSTOWN VT	*HUNTINGDON	UNITED	*JUNIATA VALLEY
1987	*STATE COLLEGE	*TYRONE	*BISHOP GUILFOYLE	*JUNIATA VALLEY
1988	*ALTOONA	*BALD EAGLE AREA	*BELLWOOD-ANTIS	*WEST BRANCH
1989	*HOLLIDAYSBURG	*BELLEFONTE AREA	WESTMONT HILLTOP	LAUREL VALLEY
1990	*HOLLIDAYSBURG	*CENTRAL	PURCHASE LINE	LAUREL VALLEY
1991	*STATE COLLEGE	*LOCK HAVEN	FOREST HILLS	SALTSBURG
1992	*STATE COLLEGE	*LOCK HAVEN	FOREST HILLS	CONEMAUGH VAL.
1993	*HOLLIDAYSBURG	*LOCK HAVEN	FOREST HILLS	LAUREL VALLEY
1994	*STATE COLLEGE	*LOCK HAVEN	FOREST HILLS	LAUREL VALLEY
1995	*HOLLIDAYSBURG	*CENTRAL CAMBRIA	*TYRONE	FERNDALE
1991	*PUNXSUTAWNEY	BROOKVILLE	—	SMETHPORT
1992	*DUBOIS	—	REDBANK VALLEY	SMETHPORT
1993	*DUBOIS	—	CARNS CITY	CLARION LIMESTONE
1994	*CLEARFIELD	—	BROOKVILLE	COUDERSPORT
1995	*DUBOIS	—	BROOKVILLE	SMETHPORT
	<b>District VI-IX</b>	<b>District VI-IX</b>	<b>District V-VI</b>	<b>District V-VI</b>
1996	*Altoona	*Lock Haven	*Tyrone	*Moshannon Valley

\* Indicates CPFCA Schools

CPFCA Schools have won thirty-five district football championships

26 N. 2nd St.  
Clearfield, PA 16830

Phone (814) 765-3582  
Fax (814) 765-7467



**Jims Sports Center**

Embroidery - Screen Printing  
Team Sales

Printing Done  
on Premises

DANIEL L. MALLOY

**P.A.M.P.**

Printing And More Printing

814-355-3007 FAX 814-355-3305

**SCREENPRINTING • OFFSET PRINTING**  
**AD SPECIALTIES**

201 South Potter St., Bellefonte, Pa 16823

**NOERR ASSOCIATES**

TIMOTHY NOERR, PRESIDENT

262 NOERR LANE, LEWISTOWN, PA 17044

VOICE MAIL #558-5053

717-543-6446

CREATIVE IMAGING SOLUTIONS



State-of-the-art computer systems, software & presses create Premium Quality Finished Projects at

**laBue Printing, Inc.**

DuBois 371.5059 St Marys 781.6000

**Thomas Farr Masonary**

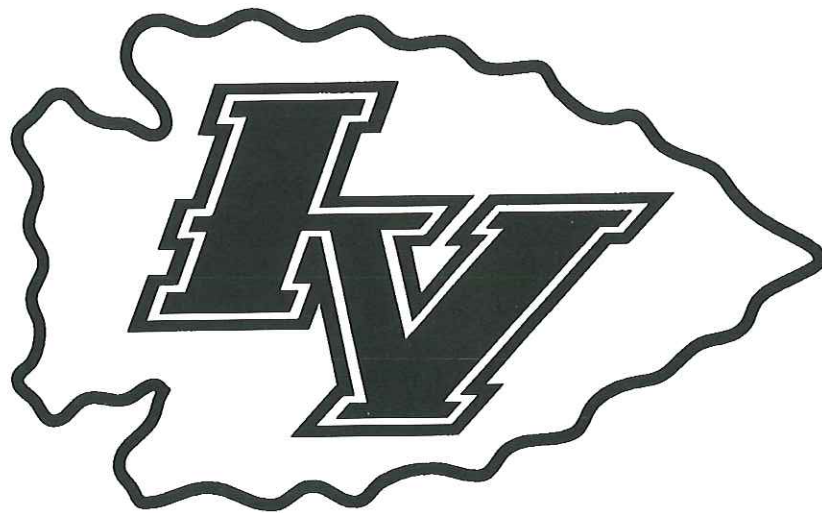
311 Ridge Avenue  
Altoona, PA 16602  
(814) 944-5479



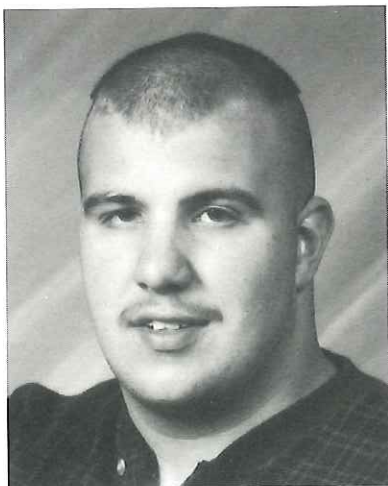
**PPG Industries, Inc.**  
Works 27  
Route 220  
Post Office Box 307  
Tipton, Pennsylvania 16684-0307 USA



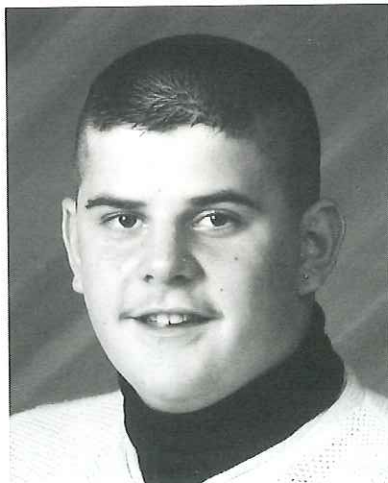
# the WARRIOR CLUB of Indian Valley High School



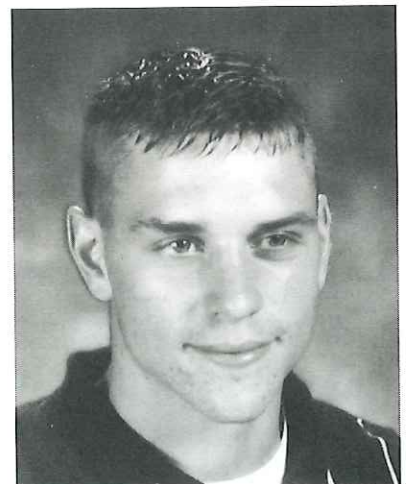
salutes the young men representing our  
high school in this UNI-MART Classic.



#35 Lloyd Cavanaugh



#75 Karl Pisch

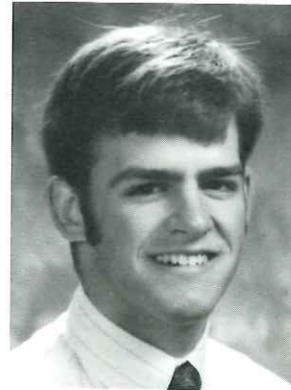


#86 Dennis Ritchey

# Hollidaysburg Area Golden Tigers Booster Club Congratulates



#70 John Creuzberger



#12 Benjamin S. Piper

GOO  
L  
J  
E  
E  
E  
G  
O  
O  
D  
L  
I  
G  
H  
T  
S

H  
o  
l  
l  
i  
d  
a  
y  
s  
b  
u  
r  
g  
B  
o  
o  
s  
t  
e  
r  
s

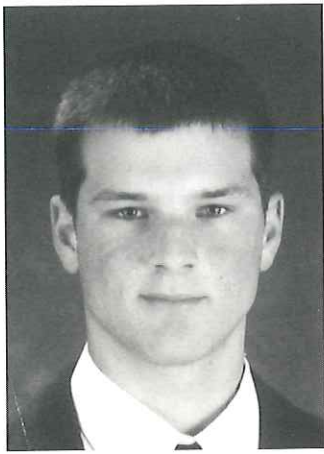


#57 Eric Toggart

Western Conference Champions  
'65, '67, '82, '85, '88, '89, '90  
Central Counties Conference Champs  
'56, '73, '74, '75, '78, '81, '82, '85  
District VI AAAA Champions  
'85\*, '89, '90, '95  
Big 8 Champions  
'73  
Allegheny Conference Champions '94







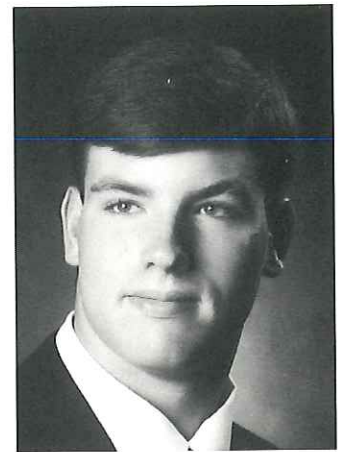
**#11 Joe Hall**  
Punxsutawney  
Hall's Plantshop,  
Punxsutawney



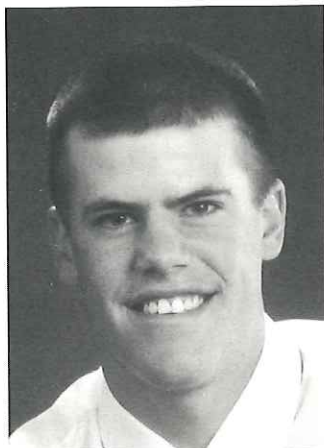
**#71 Mike Hoover**  
Williamsburg  
American Legion Post 456,  
Williamsburg  
Altoona Mirror



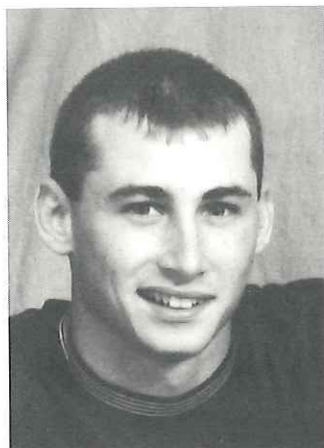
**#28 Bill Householder**  
Huntingdon  
Huntingdon Bone & Joint  
Surgery, Inc.



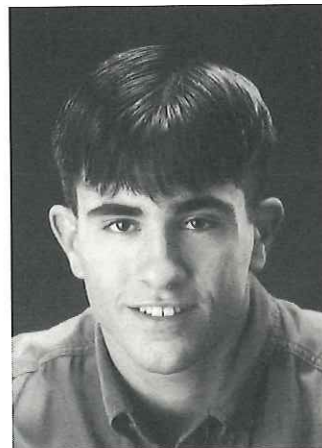
**#82 Matt Johnson**  
Altoona  
Big A Booster Club



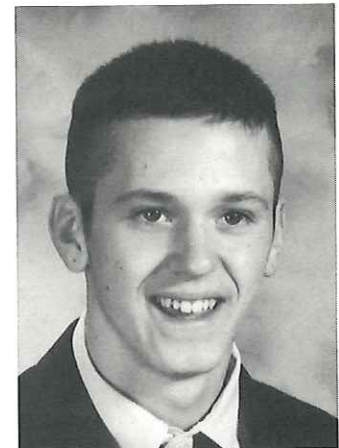
**#46 Joey Kitt**  
Central  
Bridenbaugh Farm Market  
ECS Refining



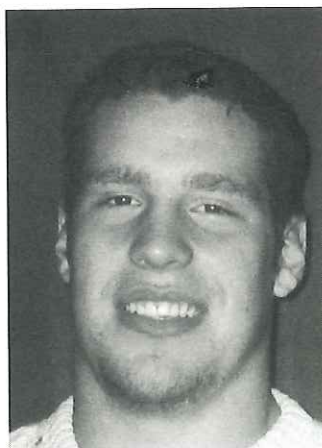
**#40 Randy Landrum**  
Huntingdon  
Huntingdon County  
AVTS Student Youth  
Organization



**#2 Matt Lehman**  
Central  
Atlas World Wide  
Vanline Moving



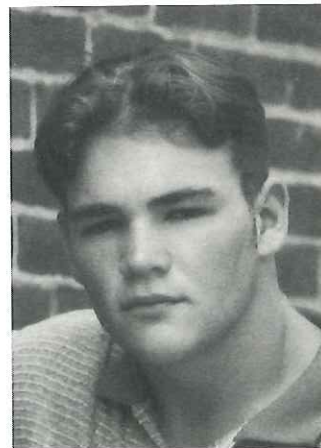
**#20 Shaun McIntyre**  
Bishop Guilfoyle  
Kruisin Ko.  
PPG Industries, Inc.  
K Management Group, Inc.



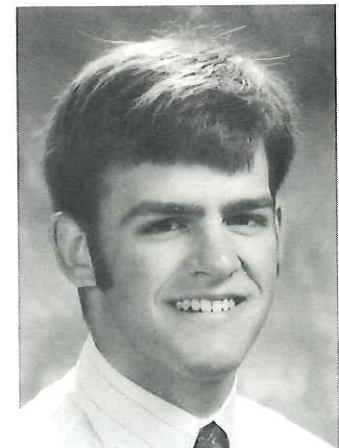
**#68 Nate Musselman**  
Central  
Musselman Family &  
Friends



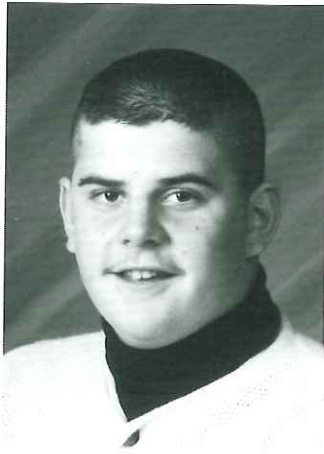
**#30 Marcus Owens**  
Tyrone  
Candy Bouquet of  
Altoona



**#99 Taylor B. Patterson**  
Huntingdon  
Graphics & Design is an  
Advertising Firm



**#12 Benjamin S. Piper**  
Hollidaysburg  
Central Bank,  
Duncansville



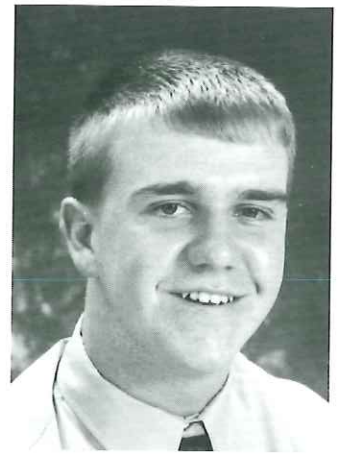
**#75 Karl Pisch**  
Indian Valley  
H. C. Kerstetter Company



**#9 Lanny L. Ramey Jr.**  
Mount Union  
American Legion Post 322,  
Mapleton Depot & Dad



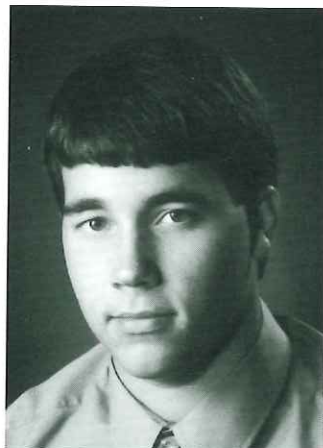
**#86 Dennis Ritchey**  
Indian Valley  
Eichhorn's Tax Service  
Snyders Landscapes  
Unlimited



**#64 Ray Rosenberry**  
Southern Huntingdon  
Rodney K. Hough, MD  
-- Family Practice--



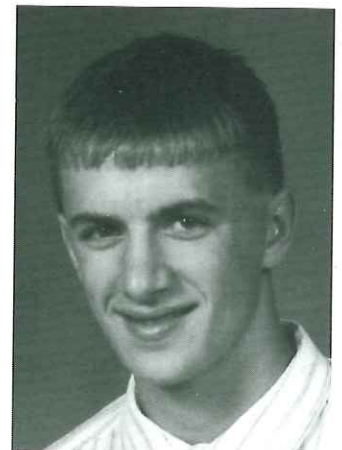
**#73 David Rotsch**  
Punxsutawney  
County Market &  
Several Punxsutawney  
Merchants



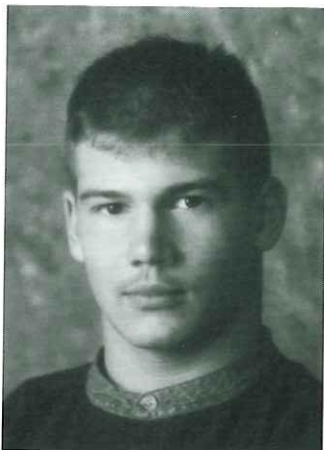
**#62 Jonathan Seiner**  
Tyrone  
Bull Pen Lounge



**#48 Tom Shaffer**  
Central  
Ronald D. Walters, MD



**#23 Andy Showalter**  
Juniata Valley  
HRI, Inc., State College



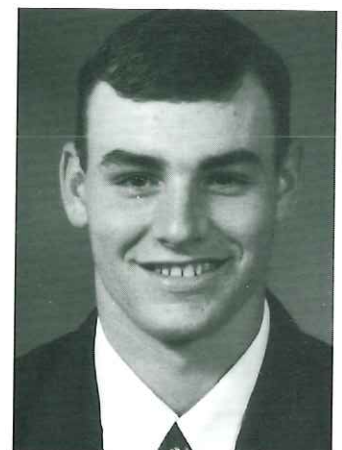
**#33 Mark Snyder**  
Mount Union  
Julie's Beauty Salon  
Scratchard Agency  
J. S. Giacobello, Inc.



**#21 Seth Soccio**  
Lewistown  
Zampelli Electronics,  
Lewistown



**#57 Eric Toggart**  
Hollidaysburg  
Terry R. Varner,  
Wienken & Associates



**#7 Shawn M. Young**  
Huntingdon  
Raystown Boat Exchange,  
James Creek



# JOSTENS



*No matter where life takes you, when you hit the high points, Jostens will be there to help you celebrate. From graduation to achieving your best at whatever you do, we'll be there with class rings, yearbooks, caps and gowns and much-deserved awards.*

*Beverly A. Harader  
Sales Representative*

*~~P.O. Box 967~~  
~~Lemont, Pa 16851~~  
(814) 234-1938*

*768 N. ARRON DR  
STATE COLLEGE, PA  
16803*

# UNI-MART FOOTBALL CLASSIC GAME RULES

**OFFENSIVE RESTRICTIONS:** Must play with a balanced line. There must be three men on either side of center on the line of scrimmage. The offense may align in or motion to trips formation as long as one running back remains aligned in the backfield between the tackles. Each team must attempt passes on 30% of the offensive plays. Percentages will be checked midway through the third quarter. If under the 30% passes have been thrown, each non-pass play will be penalized as unsportsmanlike conduct until the percentage is met and maintained.

Forced scrambles and sacks shall be counted as pass percentage.

**DEFENSIVE RESTRICTIONS:** Must align in basic 5-2 with a man on the center, a man on each tackle, a man on each end (or outside the defensive tackle on a split end side.) Linebackers must be over the guards and deeper than the heels of the defensive tackles. Secondary may be man or zone in any desired scheme. Defensive ends (one or both may drop for pass coverage) but must start in alignment outside defensive tackle on or off the line. There shall be no blitzing or shooting linebackers or secondary. Slanting & Looping by front five is permitted.

**SPECIAL FOR KICKING GAME:** In kicking game situations the linebackers may move up onto line of scrimmage, and the secondary may move up (but must stay outside the defensive end); however, no more than 7 may rush on any one play.

**SPECIAL FOR GOAL-LINE:** Anytime the offense has less than three yards to go for a first down or a touchdown, the linebackers may move as close to the line as desired, and the secondary may place two men on the line (secondary men must be outside the defensive end). After a score by either team, a team that is behind by 9 or more points will have the choice to kick-off or receive.

**PLAYING TIME:** Each player must participate for at least 15 plays.

**TIME SPECIFICATIONS:** Quarters 1 and 3 will be 12 minutes  
Quarters 2 and 4 will be 15 minutes

**TIE BREAKER:** If the score is tied at the end of regulation play it will stand as a tie.

## GOOD LUCK



#50 Richi Fickes

from the

**CLAYSBURG - KIMMEL  
FOOTBALL  
BOOSTER CLUB**

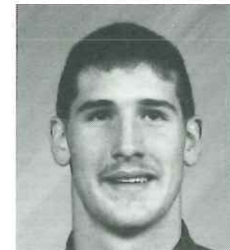
## CONGRATULATIONS WE'RE PROUD OF YOU

CURWENSVILLE

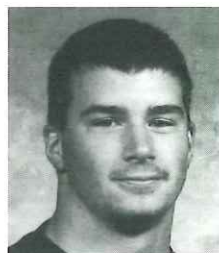
Golden Tide Football Club  
&  
Coaches



#20 Josh  
McBride



#91 Phillip  
Turner



#61 Gary  
Waroquier



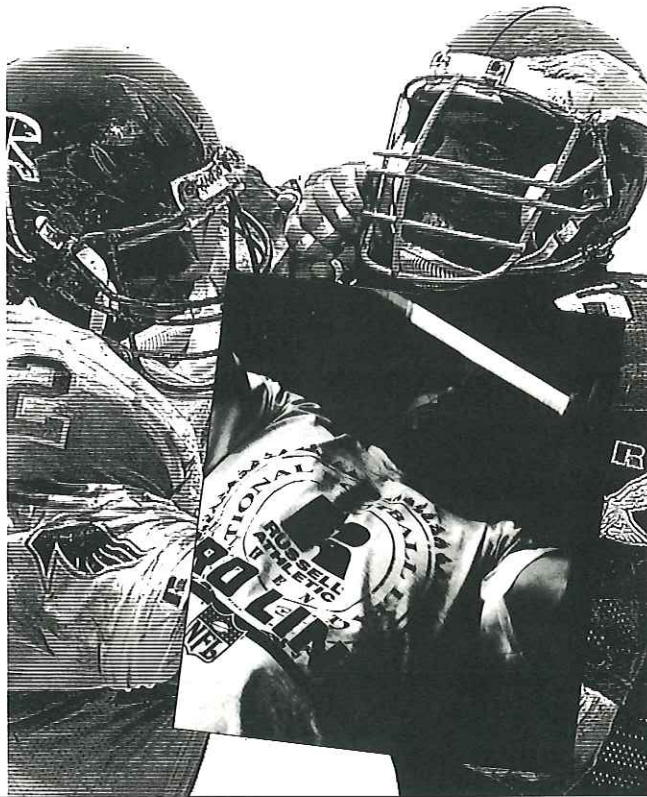


**Worn by America's Top Teams**

Get the same quality and style your favorite Pro team demands with the Russell Athletic NFL Proline collection. Authentic apparel and game jerseys used by the players in the locker room and on the field. Russell Athletic, Worn by America's Top Teams.



**DeMans**  
295 MAIN ST.  
BROOKVILLE, PA. 15825  
PHONE (814) 849-2351

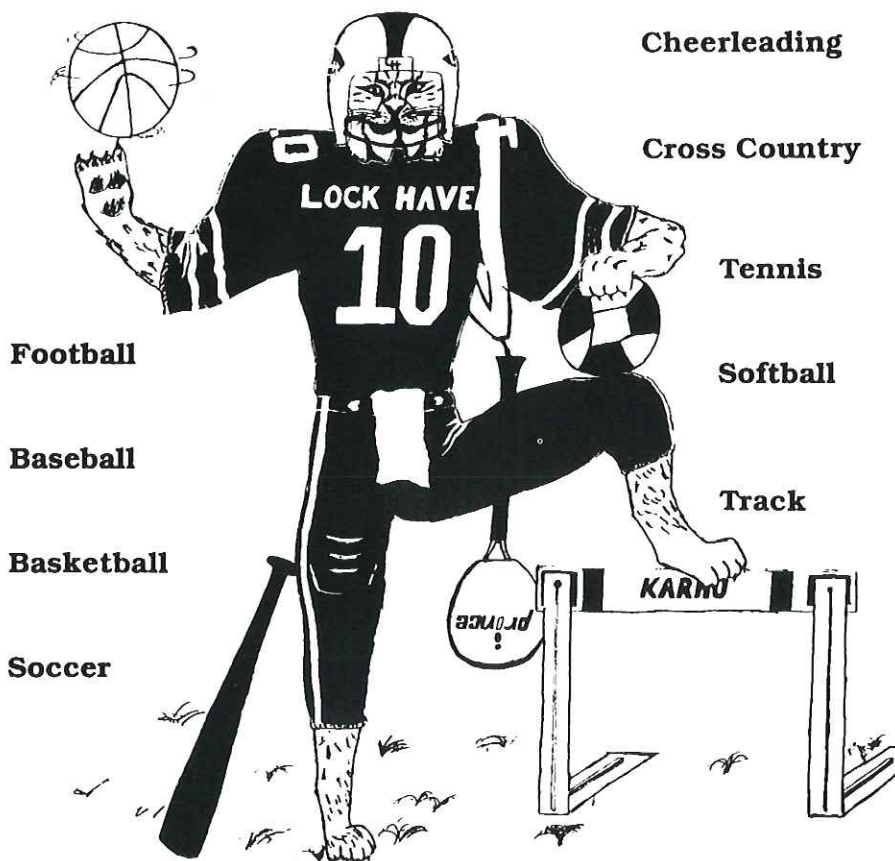


## TYRONE CHEERLEADERS FOR THE SOUTH



Front Row: Jenn Brinkman, Jaime McConnell—Head Cheerleader, Jess HosBand—Co. Head. Middle Row: Wendy Fink, Abby Isenburgh, Jessica Focht, Carol Anders. Back Row: Jenn Conrad, Marcy Behrens, Kim Crofchek, Amanda Hostler, Abi Ramsey. Missing from photo: Christy Brower, Amber Edmundson, Kelly Broadwater, Jenna LaRosa, Tabitha Lewis, Charity Garthwaite, Terri Shultz—Coach, Jaime Miles—Asst. Coach. 37

# Lock Haven Bobcat Booster Club



**Football**  
**Baseball**  
**Basketball**  
**Soccer**

**Cheerleading**  
**Cross Country**  
**Tennis**  
**Softball**  
**Track**

**Congratulations to the Bobcat Football Team**

**District VI Champions '91, '92, '93, '94**

**District VI-IX Champions '96**

**Region III (Northwest Region) Champions '92**



**#52 John Davis**



**#86 Joe Hanna**



**#14 Matt Heintz**



**#47 Mike Rendos**



**#58 Chad Wolfe**



# HUNTINGDON HIGH FOOTBALL BOOSTER CLUB WISHES GOOD LUCK TO

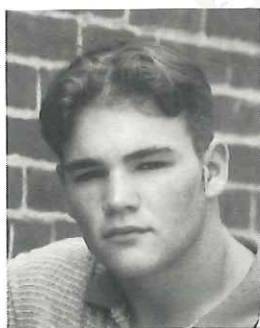
## Bearcat All-Stars



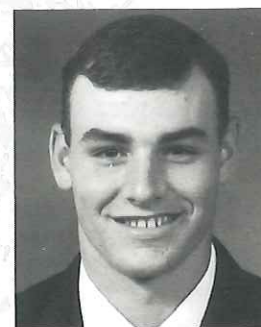
**#28 Bill  
Householder**



**#40 Randy  
Landrum**



**#Taylor B.  
Patterson**

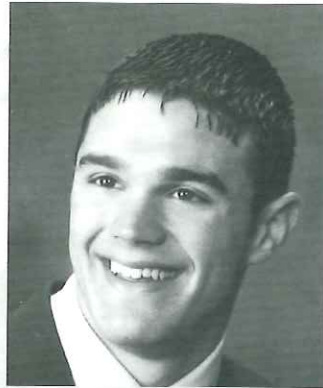


**#7 Shawn M.  
Young**

**Good Luck  
To The 1997  
Bearcat Football Squad**

# BEST WISHES

TO



#4 Justin Ingram



#7 Eric Kaufman

From The  
**Clearfield Bison**  
**Red And Black Club And**  
**The Quarterback Club**

**Gold & Silver Creations — Balfour Co.**

High School Products

Championship Rings & Watches

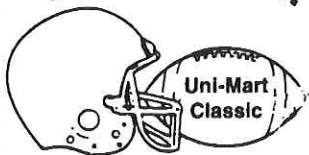
817 South Sparks Street    814-237-3860  
State College, PA 16801    Fax: Same

*JOSTENS*

BEVERLY A. HARADER  
Sales Representative  
(814) 234-1938

School Products Group  
Box 967  
111 Grove Circle  
Lemont, PA 16851

C. P. F. C. A.



**ROB IRWIN**

Secretary/Treasurer  
2461 Buchenhorst Road  
State College, PA 16801  
H - 237-7597  
W - 355-4833



*L. Woods*  
Photography

415 Montgomery Street  
Hollidaysburg, Pa. 16648



# SCHOLARSHIP WINNERS

## 1985 North & South

Bryon Comly--Bellefonte Area  
Chris Davis, Hollidaysburg  
Kevin Shaw--Philipsburg-Osceola  
Greg Ferner--Tyrone  
Lester Smeal--West Branch  
Tom Franco--Bishop Guilfoyle

## 1986 North & South

Jacque DeMatteo--Clearfield  
Adam Claar--Bellwood-Antis  
Brian Dimmick--Curwensville  
Rich Dodson--Hollidaysburg  
Rob Ewing--Penns Valley  
Scott Kerr--Claysburg-Kimmel  
Marc McMullin--Bellefonte Area  
Craig Sellers--Huntingdon  
Tim Shirey--Philipsburg-Osceola  
Shawn Wesner--Bishop Guilfoyle

## 1987 North & South

Cary Dimmick--Bellefonte Area  
Mark Chamberlain--Huntingdon  
Dave Boal--Penns Valley  
Mark Smith--Southern Huntingdon  
Dave Eisenhooth--Bald Eagle Area  
Bill Weyandt--Altoona  
Terry Powers--Philipsburg-Osceola  
Rich Lang--Glendale

## 1988 North & South

David Domico--Curwensville  
Mike Burket--Huntingdon  
Aaron Gustkey--Philipsburg-Osceola  
Jerry DeLucia--Moshannon Valley  
Don Mansfield--Lock Haven  
Newt Holobinko--Altoona

## 1989 North & South

Steve Dorman--Bald Eagle Area  
Jim Foster--Juniata Valley  
Phil Lowry--Bellefonte Area  
Dale Frank--Hollidaysburg  
Doug Stratton--Philipsburg-Osceola  
James Garver--Claysburg-Kimmel

## 1990 North & South

Jason Clark--DuBois  
Jamie Brumbaugh--Mt. Union  
Fred Ironside--Penns Valley  
Doug Claycomb--Claysburg-Kimmel  
Mike Weaver--Bellefonte Area  
Steve Mock--Williamsburg

## 1991 North & South

George Tirsch--Bald Eagle Area  
Aaron Crilly--Central  
Nelson Tressler--Bellefonte Area  
Shawn Leslie--Claysburg-Kimmel  
Chuck Zannino--Lewistown  
Brian Long--Hollidaysburg

## 1992 North & South

Bob McCaffrey--Penns Valley  
Rob Closson--Altoona  
Bob Selfridge--Clearfield  
Jason Long--Central

## 1993 North & South

Mike Love--Clearfield  
Jim Rivello--Juniata Valley  
Corby Lucas--Penns Valley  
Don Peterson--Tyrone

## 1994 North & South

Chris Achuff--Bellefonte Area  
DJ Sentman--Mount Union  
Todd Beers--DuBois  
Scott Noerr--Punxsutawney

## 1995 North & South

Jeff Wetzler--Bellefonte Area  
Shawn Hoyer--Hollidaysburg  
Hayes Bickle--West Branch  
Andy Krider--Central  
Steve Hill--Bald Eagle Nittany  
Chris Fultz--Indian Valley

## 1996 North & South

Brad Wood, Philipsburg-Osceola  
Greg Kennis, DuBois  
Nate Glunt, Curwensville  
Jeff Bowers, Bald Eagle Nittany  
Jacob Steinbugl, Altoona  
Bill Gunnett, Williamsburg  
Ron Schlecht, Hollidaysburg  
Ryan Wolfkiel, Indian Valley

# PREVIOUS CPFCA CLASSIC COACHING STAFFS

Year	Team	Head Coach	Assistant Coaches	Year	Team	Head Coach	Assistant Coaches
1985	North	Don Folmar, Philipsburg-Osceola	J. Gawen Stoker, Bald Eagle Area Dick Cummings, Lewistown Jack Bailey, Philipsburg-Osceola Frank Pipik, Philipsburg-Osceola	1991	North	Dan Decker, Bald Eagle Nittany	Jess Long, Bald Eagle Nittany Tom Shaffer, Bald Eagle Nittany Mike Shenkle, DuBois William Vroman, West Branch
	South	John Hayes, Bellwood-Antis	Vince Nedimyer, Altoona Harold Price, Hollidaysburg Tom Irwin, Bishop Guilfoyle Pete Sellers, Huntingdon		South	Jack Krider, Central	John Franco, Altoona Tom Gibboney, Huntingdon Jeff Lingenfelter, Claysburg-Kimmel Harold Price, Hollidaysburg
1986	North	J. Gawen Stoker, Bald Eagle Area	John Wetzler, Bellefonte Area Ken Achuff, Bellefonte Area Bob Myers, Bald Eagle Area Curt Heverly, Bald Eagle Area	1992	North	Mike Flickinger, Penns Valley	Don Hosterman, Penns Valley Don Lucas, Penns Valley Mike Packer, Lock Haven Ron Pavlechko, State College
	South	Harold Price, Hollidaysburg	John Hayes, Bellwood-Antis William Clouse, Juniata Valley Jack Krider, Central John Franco, Altoona		South	Gary Juart, Punxsutawney	Howie Camberg, Moshannon Valley Gary Garzoni, Punxsutawney Alan Hartman, Mount Union John Knopick, Punxsutawney
1987	North	John Wetzler, Bellefonte Area	Ron Pavlechko, State College Dick Bell, Bellefonte Area Ken Achuff, Bellefonte Area Tim Janocko, Clearfield	1993	North	Mike Packer, Lock Haven	Bob Dwyer, Lock Haven Mike Flickinger, Penns Valley John Englert, Lock Haven J.P. Hannah, Lock Haven Bob Shinskie, Lewistown
	South	William Clouse, Juniata Valley	Tom Miller, Tyrone Jack Krider, Central Tom Gibboney, Huntingdon Bob Rupert, Juniata Valley		South	John Franco, Altoona	Dan Bender, Altoona Tom Gibboney, Huntingdon Tom Bussman, Altoona Jack Krider, Central Rick Hatch, Altoona
1988	North	Jack Bailey, Philipsburg-Osceola	Dan Decker, Bald Eagle Nittany Frank Pipik, Philipsburg-Osceola Mike Packer, Lock Haven Dick Wood, Philipsburg-Osceola	1994	North	Herm Wertz, DuBois	Tim Janocko, Clearfield Rod Smith, DuBois Jeff Vizza, DuBois
	South	Tom Irwin, Bishop Guilfoyle	Chuck Hoover, Tyrone Mark Montrella, Bishop Guilfoyle Howie Camberg, Moshannon Valley Denny Conlon, Bishop Guilfoyle		South	Alan Hartman, Mount Union	Dave Baker, Williamsburg Mark Conner, Lewistown Dave Hummel, Mount Union Bob Shinskie, Lewistown Rick Wilson, Mount Union
1989	North	Gary Hubler, West Branch	Joe Lauver, Indian Valley Ed Williams, West Branch Bill Vroman, West Branch Joe Kovalcin, West Branch	1995	North	Tim Janocko, Clearfield	Todd Connor, Bald Eagle Nittany Mike Packer, Lock Haven Forrest Campman, Clearfield Jacque DeMatteo, Clearfield Jerry Moore, Clearfield
	South	John Hayes, Bellwood-Antis	Tom Gibboney, Huntingdon Chet Dillen, Bellwood-Antis John Franco, Altoona Bill Crowell, Bellwood-Antis		South	Jeff Lingenfelter, Claysburg-Kimmel	Jack Krider, Central Harold Price, Hollidaysburg Monte Cowher, Claysburg-Kimmel Anthony Garver, Central Kent Sell, Claysburg-Kimmel
1990	North	Tim Janocko, Clearfield	Forrest Campman, Clearfield Mike Flickinger, Penns Valley Mike Packer, Lock Haven Jerry Moore, Clearfield	1996	North	Howie Camberg, Moshannon Valley	Steve Gutoff, Philipsburg-Osceola Gary Hubler, West Branch Frank Belella, Moshannon Valley Jerry Delucia, Moshannon Valley Jeff Vroman, Moshannon Valley
	South	Alan Hartman, Mount Union	David Baker, Williamsburg William Clouse, Juniata Valley David Hummel, Mount Union Rick Wilson, Mount Union		South	John Franco, Tyrone	Mike Burket, Huntingdon John Hayes, Bellwood-Antis John McDonald, Tyrone John Meredith, Tyrone Mark Woodring, Tyrone

BREAKFAST • LUNCH • DINNERS  
EAT-IN • TAKEOUT • DELIVERY • CATERING

**ANN'S T.D. RESTAURANT**  
*Where Cooking Is An Art and Eating Is A Pleasure  
The Talk of the Town*

**ALL HOMEMADE  
SOUPS • PASTRIES • SALADS**

205 Allegheny Street  
Phone 695-7301 Hollidaysburg, PA 16648

**K-D SPORTS**  
Custom Clubs ♡ Club Repair ♡ Golf Supplies & Equipment



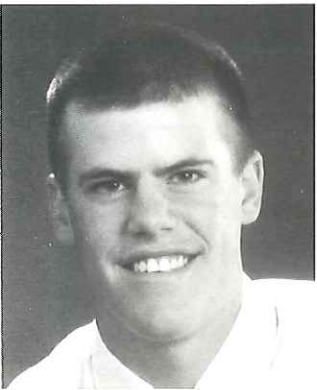
DAVID & KATHY RADAKER

RD 1, Box 44, DuBois, PA 15801  
**(814) 371-0634**

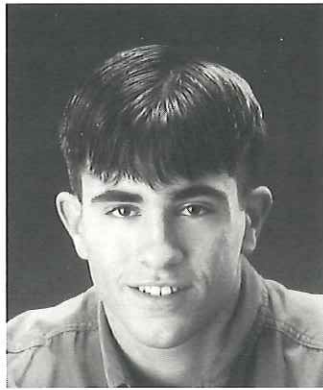


# SPRING COVE QUARTERBACK CLUB

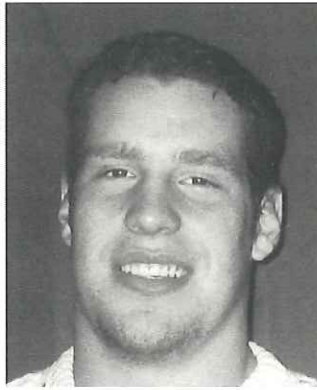
Sends Best Wishes for Success To



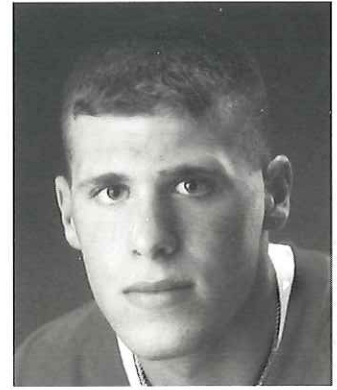
#46 Joey Kitt



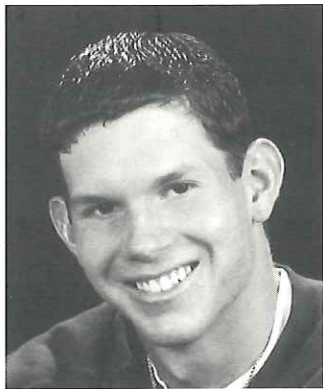
#2 Matt Lehman



#68 Nate Musselman



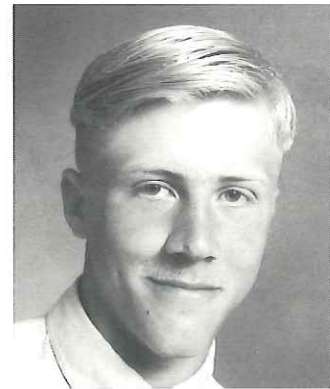
#48 Tom Shaffer



#12 J.R. Baughman

Moshannon Valley  
**KNIGHT BOOSTER CLUB**  
and  
**LADIES BOOSTER  
AUXILIARY**

“Best of Luck” in your future



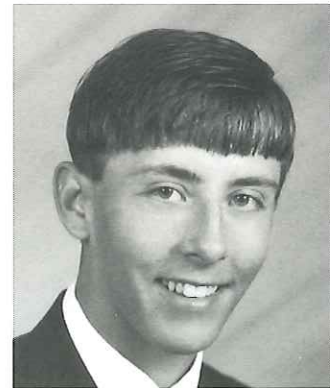
#22 Michael Keith



#64 Bill Raab



#63 Josh Robison



#2 Chris Tekely

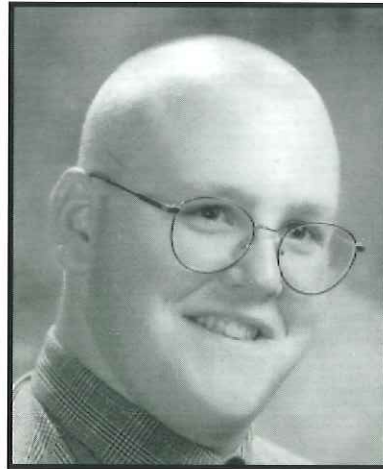
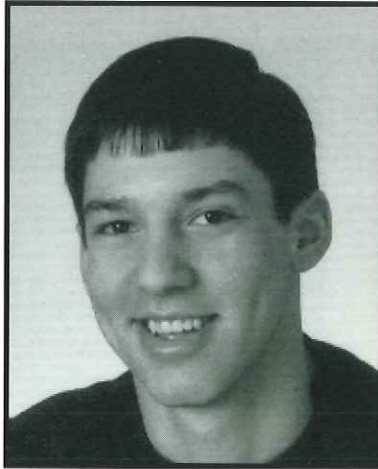
# The Bellwood-Antis Quarterback Club

# Salutes

These Two Outstanding Athletes  
From Bellwood-Antis High School



**Go Blue**



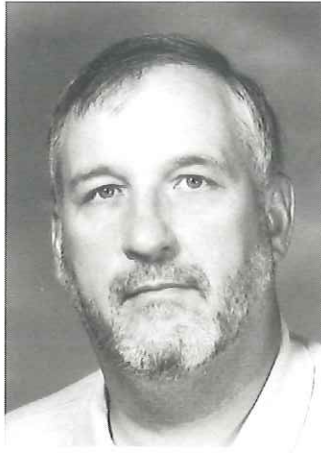
**BLUE DEVIL  
COACHING STAFF:**  
HEAD COACH: John Hayes  
ASSISTANTS: Jim Torsell, Gene  
Yingling, Bill Crowell, John  
Garritano, Randy Miller, Charlie  
Burch, Galen Claar, Ken  
Swanson



**1996 Classic**



# Central Pennsylvania Football Coaches Association Salutes Their Outstanding Teams and Coaches



**Howie Camberg, Moshannon Valley  
District V-VI Class A Champs**



**John Franco, Tyrone  
District V-VI Class AA Champs  
PIAA Class AA Runnerup**



**Mike Packer, Lock Haven  
District VI-IX Class AAA Champs**



**Ed Dalton, Altoona  
District VI-IX Class AAAA Champs**

## MEMBER SCHOOLS

ALTOONA  
BALD EAGLE NITTANY  
BALD EAGLE AREA  
BELLEFONTE  
BELLWOOD-ANTIS  
BISHOP GUILFOYLE  
BUCKTAIL  
CENTRAL  
CLAYSBURG-KIMMEL  
CLEARFIELD

CURWENSVILLE  
DUBOIS  
GLENDALE  
HOLLIDAYSBURG  
HUNTINGDON  
INDIAN VALLEY  
JERSEY SHORE  
JUNIATA VALLEY  
LEWISTOWN  
LOCK HAVEN

MOSHANNON VALLEY  
MOUNT UNION  
PENNS VALLEY  
PHILIPSBURG-OSCEOLA  
PUNXSUTAWNEY  
SOUTHERN HUNTINGDON  
STATE COLLEGE AREA  
TYRONE AREA  
WEST BRANCH  
WILLIAMSBURG

# Making a Difference The Big 33 Football Classic...

A Great Pennsylvania Tradition. Celebrating Its 40th Year!

Showcasing Our

- Youth ■ All-Star Band ■ All-Star Cheerleaders ■ Buddies ■ Players
- Host Families and ■ Academic Scholarship Winners!

## Be A Part Of It

**When:** Saturday, July 26, 1997 Kickoff, 7:00 p.m.

**Where:** Hersheypark Stadium, Hershey, PA

Reserved Seats: \$10.00

General Admission: \$5.00

**RESERVATIONS:** Call 717-534-3911

**"Best All-Star  
football game  
in the USA"**  
—Dick Vermeil  
Head Coach of the  
St. Louis Rams

1997 Big 33 Honorary Chairman

*Herb Adderley*

1957

*Selected to the 1st Big 33 Team*

1957-1961

*Michigan State*

1961

*1st Round Draft Pick  
Green Bay Packers*

1961-1969

*Green Bay Packers*

1970-1972

*Dallas Cowboys All Pro Defensive Back*

**Played in Four Super Bowls**

*I, II, IV & V*

1980

*Pro Football Hall of Fame*

