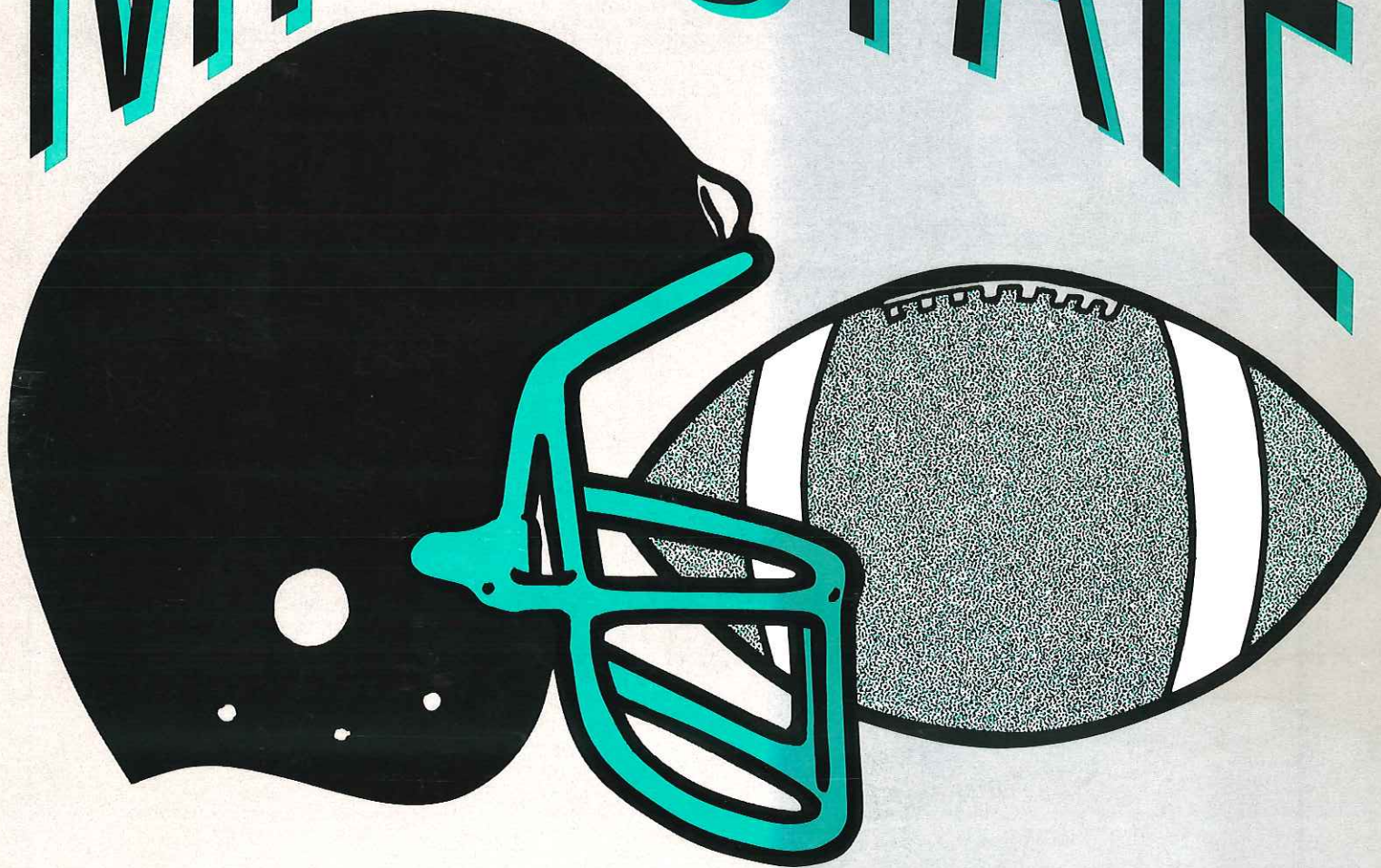


6th Annual

MID-STATE



CLASSIC

Saturday, June 23, 1990

Mansion Park Stadium
Altoona, PA

Sponsored by



A Keystone Community Bank

Co-Sponsored by

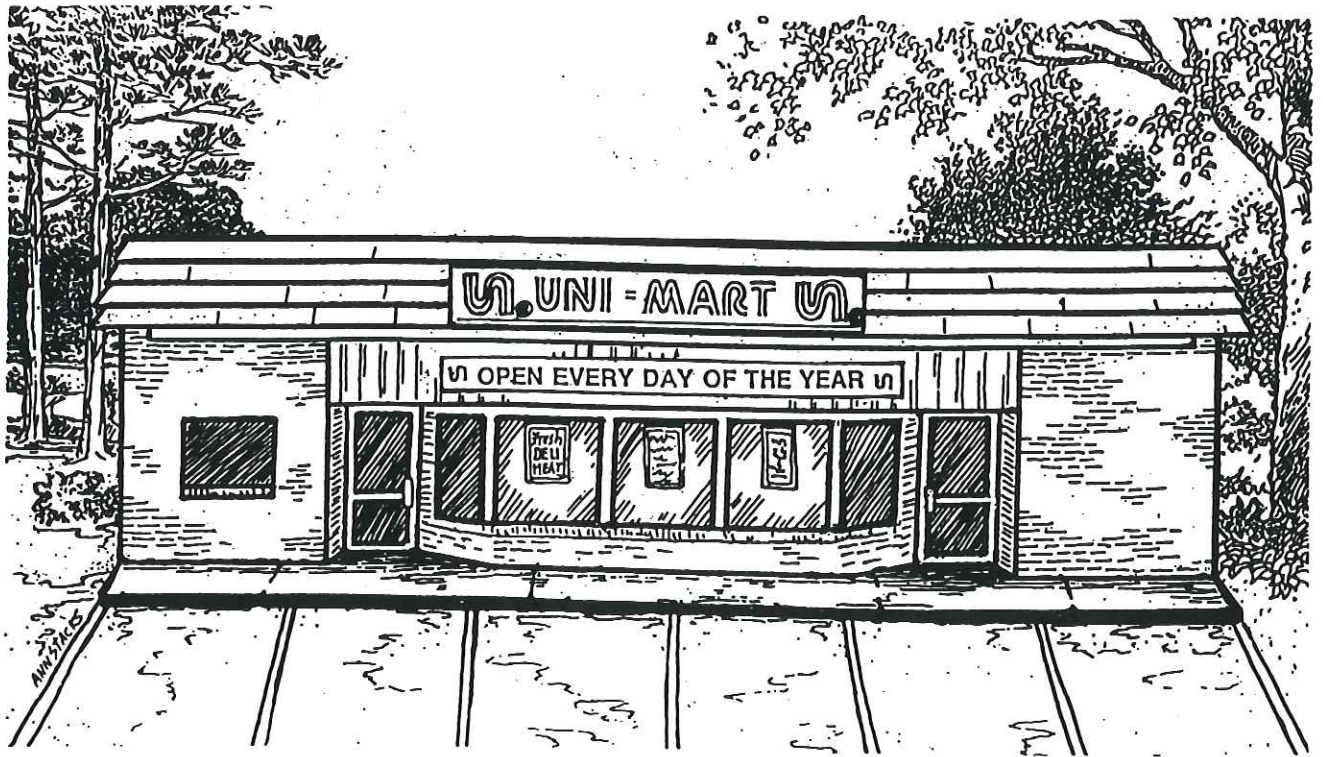
The Centre Daily Times
Joel Confer Pontiac-Toyota-BMW-GMC

Philip H. Sieg

Lake Chevy-Olds-Geo/Lake Lincoln-Mercury-Saab

Bradford Coal Company

Uni-Marts, Inc.



UNI-MARTS

MORE than a convenience store!

MID-STATE CLASSIC REGION



Welcome to the 6th annual Mid-State Football Classic. Thank you for backing the Classic and football in general.

Through your support we have been able to award \$18,000 in scholarships to help 36 outstanding young people start their post high school education. We also are able to conduct monthly football mini-schools and we are considering adding a coaching techniques and safety certification program. This year we added the CPFCA Football Abilities Skills and Techniques School to our activities — increasing exposure for our junior athletes to college recruits and scouts.

We expect a great game. We thank the people and administrators of Altoona for this tremendous facility to play in. Most of all we thank you for supporting and attending.



Thomas Gibboney, President
Central Pennsylvania Football
Coaches Association

Stadium Information

Mansion Park Stadium construction was begun in 1931. It seats just under 11,000. Renovations and addition of Omni-turf playing surface in 1989 make it the most modern stadium in central Pennsylvania — probably in the entire state.

There are ample facilities inside the stadium, so once you leave the stadium, you may not reenter. Alcoholic beverages are prohibited. Automobiles are not permitted inside the gate.

Team Physicals Compliments Of

NORTH
Dr. Stanley Yoder

SOUTH
Dr. Vincent Morgan

The Physical Therapy Departments
Rehab Hospital for Special Services

Pleasant Gap, PA

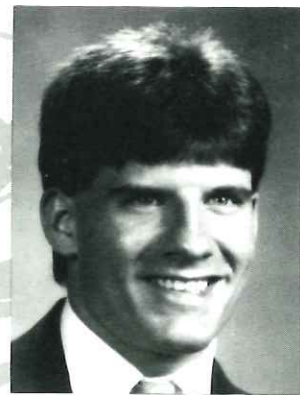
Altoona, PA

Bald Eagle Area Athletic Booster Club

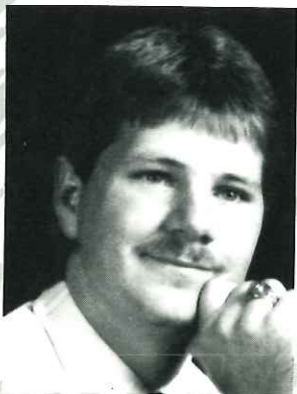
Congratulates Bald Eagle Area's
Mid-State Classic All-Stars



#44 Chad Fisher



#12 David Jones



#71 Todd Peters



#75 Todd Renninger

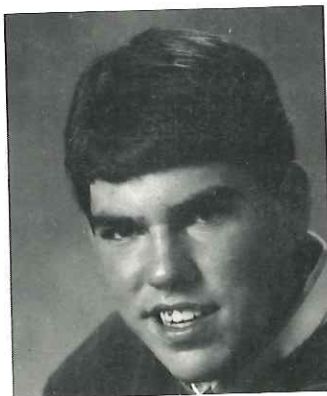
And Wishes Success
To The 1990 Bald Eagles

Mid-State Classic Summaries

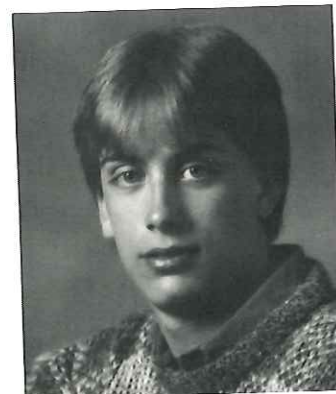
Year	Score	Most Valuable Performance	
		Offense	Defense
1985	South 14 North 13	Joe Irwin <i>Bishop Guilfoyle</i> Keith Powell <i>Phillipsburg-Osceola</i> Bill Hesketh <i>Kishacoquillas</i> John Carey <i>Bishop Guilfoyle</i>	George Zlupko <i>Altoona</i> Bill Andrus <i>Bellefonte Area</i> Bob Shea <i>Curwensville</i> Craig Sellers <i>Huntingdon</i> Tom Bowser <i>State College</i> Cord Ferrari <i>Huntingdon</i> Brent Dunmire <i>Lewistown</i> Mike Cheslock <i>Altoona</i> Bob Oakes <i>State College</i> Mike Koehle <i>Bishop Guilfoyle</i>
1986	North 29 South 20	Doug Sieg <i>Bellefonte Area</i> Rick Hoover <i>Altoona</i> Tim Fritz <i>Lock Haven</i> Matt Koehle <i>Bishop Guilfoyle</i>	
1987	South 23 North 21	Jim Renninger <i>Bald Eagle Nittany</i> Dave Hensor <i>Juniata Valley</i>	
1988	South 28 North 13		
1989	North 12 South 3		

State College High School Football Booster Club

**Congratulates Its 1990 Participants In
The Mid-State Classic**



#55 Bart Cahir



#22 Dave Martin

North And South Vs. The Weather

Doug McDonald
Senior Sports Writer
Centre Daily Times

The North overcame the weather and the South and won the Fifth Annual Mid-State All Star Football Classic at State College's Memorial Field last June 12. The South will take a 3-2 series lead into tonight's game at Altoona's renovated Mansion Park.

Heavy rains hit Happy Valley just in time to make Memorial Field look more like Memorial Lake. But the mud puddles didn't seem to hamper Bill Williams (West Branch) and Jim Renninger (Bald Eagle Nittany) as they scored the game's only touchdowns.

Casey Shore (Lewistown) and Williams combined on a 48-yard scoring play with 3:06 left in the half and then Renninger added an insurance TD from close range with 8:55 remaining in the game.

The South, which came into the game with back-to-back victories, scored on its first possession in the second half when Jon Ruff kicked a 41-yard field goal. The ball hit the crossbar and bounced over for three points with 8:29 to go in the third quarter.

Renninger was named the North's top offensive player

while Bob Oakes of State College was that team's top defensive player.

The media also honored Dave Hensor (Juniata Valley) as the South's top offensive player and Mike Koehle of Altoona Bishop Guilfoyle for his defensive play.

Gary Hubler of West Branch served as head coach of the North while John Hayes of Tyrone piloted the South.

The soggy conditions had a lot to do with keeping both offenses out of sync. The North had 151 yards total, six more than the South.

The annual game, backed by the Central Pennsylvania Coaches Association, has a three-fold purpose — to promote scholastic football, to expose District 6 talent to college coaches and to provide scholarship money for deserving All Star players.

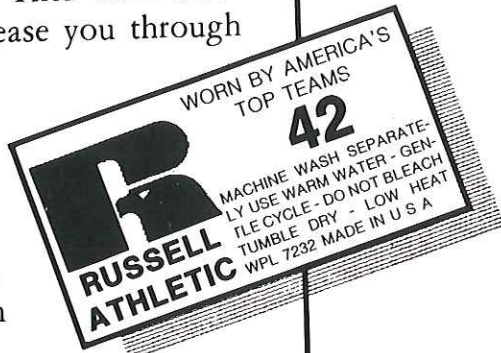
Winners of \$500 scholarship awards in the 1989 game were Phil Lowry of Bellefonte, Steve Dorman of Bald Eagle Area, Doug Stratton of Philipsburg Osceola, James Garver of Claysburg-Kimmel, Jim Foster of Juniata Valley and Dale Frank of Hollidaysburg.



Ironwear.

The Classic T's from Russell Athletic.

Nobody pumps more strength and durability into activewear than Russell Athletic. Their field-tested tees and shorts ease you through the toughest workouts— as well as lighter, more casual times. Come by today. Pick up a dozen or two.



DeMans

295 Main St.
Brookville, PA 15825
814-849-2351
"ATHLETIC TEAM
SPECIALISTS"

CONGRATULATIONS and BEST WISHES

from

THE PROGRESS

Serving Clearfield County And

The Moshannon Valley With

Almost 19,000 Copies Daily.

THE MID-STATE FOOTBALL CLASSIC

Since 1985 the Mid-State Football Classic has been providing a showcase for central Pennsylvania football talent. This game provides a final opportunity for graduating seniors to take part in a football game with and against opponents from high school years.

The game is administered and organized by the Central Pennsylvania Football Coaches Association with sponsorship and advice of local business leaders. The CPFCA selects coaches, and players, organizes, and promotes the game. Those businesses listed on the program cover support the game not only with advice, but also with significant contributions. The program advertizers, player sponsors, and patrons are essential to the continued support of this game.

Over its first five years the Mid-State Classic Scholarship Committee has awarded 36 scholarships worth a total of \$18,000 to worthy young people. Scholarship awards are based on a combination of student achievement and need.

Player Selection

Players are selected for this game by the members of the Central Pennsylvania Football Coaches Association through a multi-step process:

1. Players are nominated in writing in December and January. Each school may nominate no more than five players.
2. Players nominated are polled to ascertain that they will play if selected.
3. Each school's coach is asked to make one "automatic selection." This player will definitely be named for the game.
4. Members of the association select coaching staffs from among schools in each division—North and South.
5. After film review and with advice from the game staff, the balance of the players are selected by consensus of the division selection committee.

CLEARFIELD HIGH CHEERLEADERS for THE NORTH SQUAD



Becky Rumsky
Marlene Gormont
Joanne Trimpey
Amy Chnupa
Amy Kroell

Deb Gavalack
Andrea Toto
Stephanie Briskar
Missy Billett
Amy Yeager

Sue Dickson
Angie Ryan
Franny McClellen
Absent from photo: Michelle
Curry

PRICE SPEAKS



Fact: All Car dealers pay the same for their new cars...However some dealers will take less profit!

At the Lake Dealerships, you can deal practically on your own terms!

LOUDER THAN WORDS

433 S. Main St.,
Lewistown, PA
17044

LAKE

717-248-7848

CHEVROLET • OLDSMOBILE • GEO



101 S. Logan Blvd.,
Burnham, PA
17009

LAKE

717-248-9633

LINCOLN • MERCURY • SAAB



JOSTENS

PRINTING & PUBLISHING



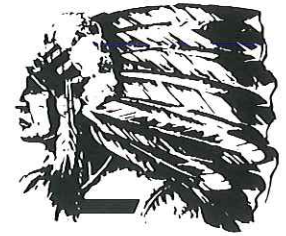
Your Pennsylvania Plant, State College, PA

Jostens Printing &
Publishing Plant
401 Science Park Road
State College, PA 16801
(814) 237-5771

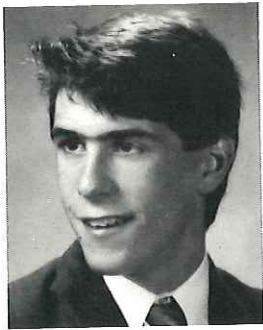
Beverly A. Harader
Sales Representative
Box 967
Lemont, PA 16851
(814) 234-1938

*The Best Days of
Your Life
Preserved For You
By JOSTENS*

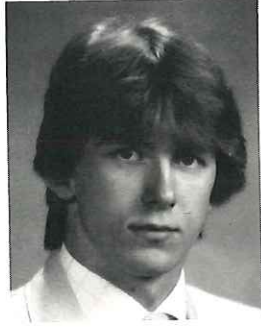
The Red Raider Booster Club



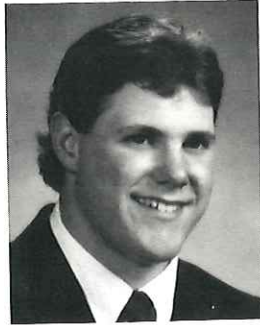
Congratulates Bellefonte's District VI Champions



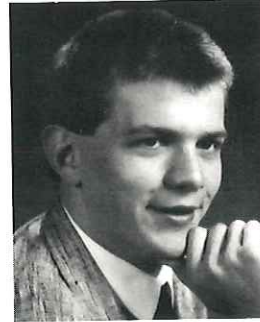
#21 Mike Weaver



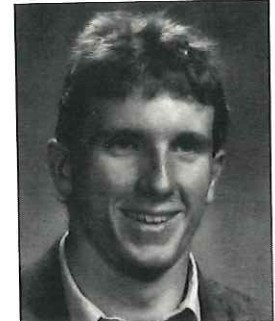
#25 Rich Rogers



#47 Todd Hardy



#50 Duffy Besch



#52 Jeff Donoughe

And Wishes Good Luck To The North Squad

Scholarships

1985

North

Bryon Comly
Bellefonte Area

Kevin Shaw
Philipsburg-Osceola

Lester Smeal
West Branch

South

Chris Davis
Hollidaysburg

Greg Ferner
Tyrone

Tim Franco
Bishop Guilfoyle

1986

North

Jacque DeMatteo
Clearfield

Brian Dimmick
Curwensville

Rob Ewing
Penns Valley

Marc McMullin
Bellefonte Area

Tom Shirey
Philipsburg-Osceola

South

Adam Claar
Bellwood-Antis

Rich Dodson
Hollidaysburg

Scott Kerr
Claysburg-Kimmel

Craig Sellers
Huntingdon

Shawn Wesner
Bishop Guilfoyle

1987

North

Cary Dimmick
Bellefonte Area

Dave Boal
Penns Valley

Dave Eisenhooth
Bald Eagle Area

Terry Powers
Philipsburg-Osceola

South

Mark Chamberlain
Huntingdon

Mark Smith
Southern-Huntingdon

Bill Weyandt
Altoona

Rich Lang
Glendale

1988

North

David Domico
Curwensville

Aaron Gustkey
Philipsburg-Osceola

Don Mansfield
Lock Haven

South

Mike Burket
Huntingdon

Jerry DeLucia
Moshannon Valley

Newt Holobinko
Altoona

1989

North

Steve Dorman
Bald Eagle Area

Phil Lowry
Bellefonte Area

Doug Stratton
Philipsburg-Osceola

South

Jim Foster
Juniata Valley

Dale Frank
Hollidaysburg

James Garver
Claysburg-Kimmel

NORTH SQUAD

School Division

Bald Eagle Area
 Bald Eagle Nittany
 Bellefonte
 Chief Logan
 Clearfield
 Curwensville
 DuBois
 Kishacoquillas
 Lewistown
 Lock Haven
 Penns Valley
 Philipsburg-Osceola
 State College
 West Branch



Tim Janocko
 Head Coach
 Clearfield



Forest Campman
 Clearfield



Mike Flickinger
 Penns Valley



Mike Packer
 Lock Haven



Jerry Moore
 Clearfield



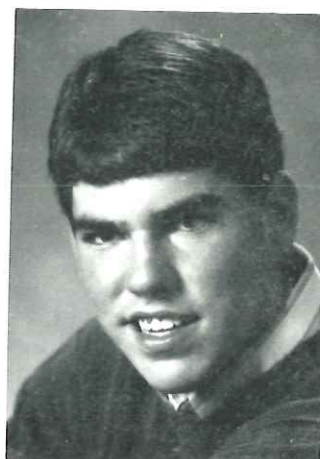
**Charles "Chook"
 Howe**
 West Branch, Trainer



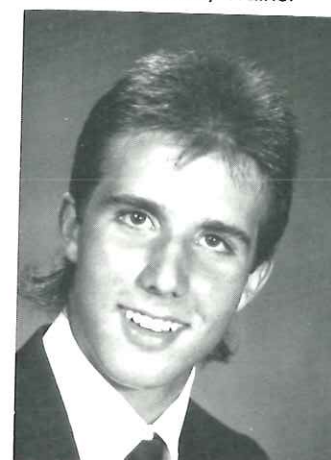
**Norman J. "Tut"
 Bailey**
 Philipsburg-Osceola
 Walter Hopkins &
 Company



Duffy Besch
 Bellefonte Area
 Pennsylvania Financial
 Group

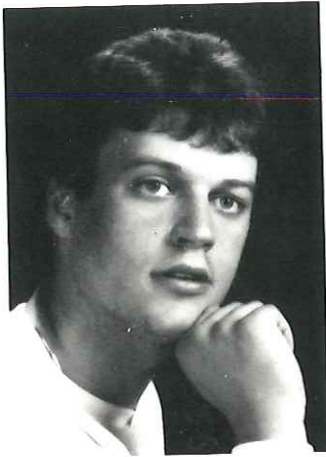


Bart Cahir
 State College
 Dean Blythe
 Insurance

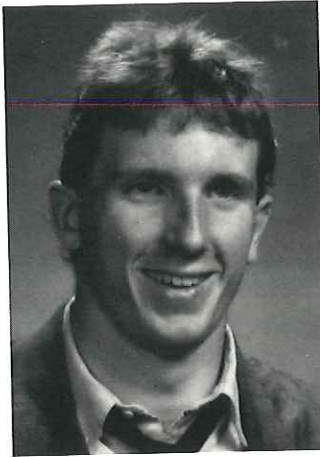


Jason J. Clark
 DuBois
 Mancuso's
 Restaurant,
 Reynoldsville

Reynoldsville Area Chamber of Commerce



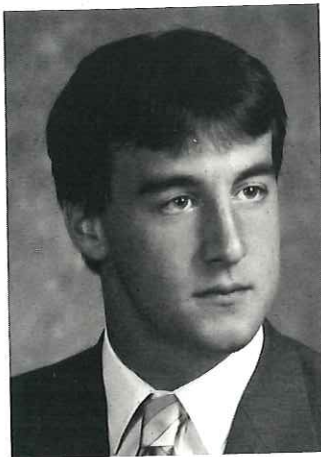
Charles E. Cruse
 Lock Haven
 Baltimore Life
 Insurance Co.



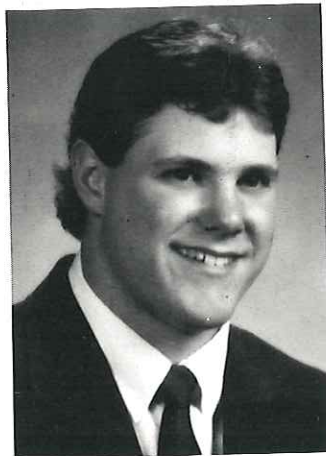
Jeff Donoughe
 Bellefonte Area
 L.T. Donoughe, DMD



Chad Fisher
 Bald Eagle Area
 Valley Home Supply



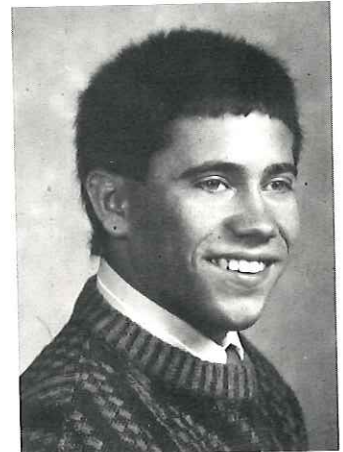
Bruce Graham
 Clearfield
 Rich Chiropractic
 Clinic, P.C.



J. Todd Hardy
 Bellefonte Area
 Erin Enterprises



Matt Henry
 Lewistown
 All Star Ford Inc.



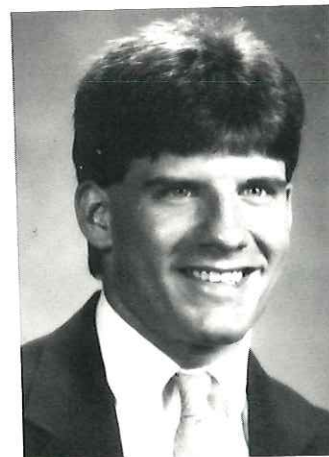
Ken Holden
 Philipsburg-Osceola
 Ken Long Motors



Fred Ironside
 Penns Valley
 Sweitzer Electric



Fred Johnson
 Penns Valley
 Penns Valley Athletic
 Booster Club



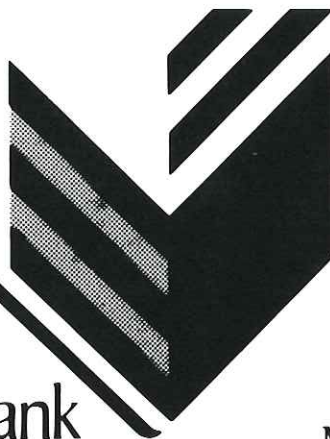
David Jones
 Bald Eagle Area
 Con-Coal, Inc.

Any banker
will lend money.

Your
shirt-sleeve
banker will
lend a hand.



Mid-State
Bank



A Keystone Community Bank

Member FDIC.

Mid-State Football Classic Game Rules

OFFENSIVE RESTRICTIONS:

Must play with balanced line. There must be three men on the line to either side of center. Each team must attempt at least 15 passes during the game.

DEFENSIVE RESTRICTION:

Must align in basic 5-2 with a man on the center, a man on each tackle, a man on each end (or outside the defensive tackle to the side of a split end).

Linebackers must be over the guards and deeper than the heels of the defensive tackles.

Secondary may be man or zone in any desired scheme.

Defensive end (one or both may drop for pass coverage but must start in alignment outside defensive tackle on or off the line. There shall be no blitzing or shooting linebackers or secondary.

SPECIAL FOR KICKING GAME:

In kicking situations the linebackers may move up onto the line of scrimmage, and the secondary may move up (but must stay outside the defensive end); however no more than 7 may rush on any one play.

SPECIAL FOR GOAL-LINE:

Anytime the offense has less than three yards to go for a first down or a touchdown, the linebackers may move as close to the line as desired, and the secondary may place two men on the line (secondary men must be outside the defensive end).

SCORING DIFFERENTIAL RULE:

After a score by either team, a team that is behind by 9 or more points will have the choice to kick-off or receive.

PLAYING TIME:

Each player must participate for at least 15 plays.

TIE-BREAKER:

If the score is tied at the end of regulation play it will stand as a tie.

**Need 10,000
Xerox® copies
tomorrow?**

***The King
can do it!***

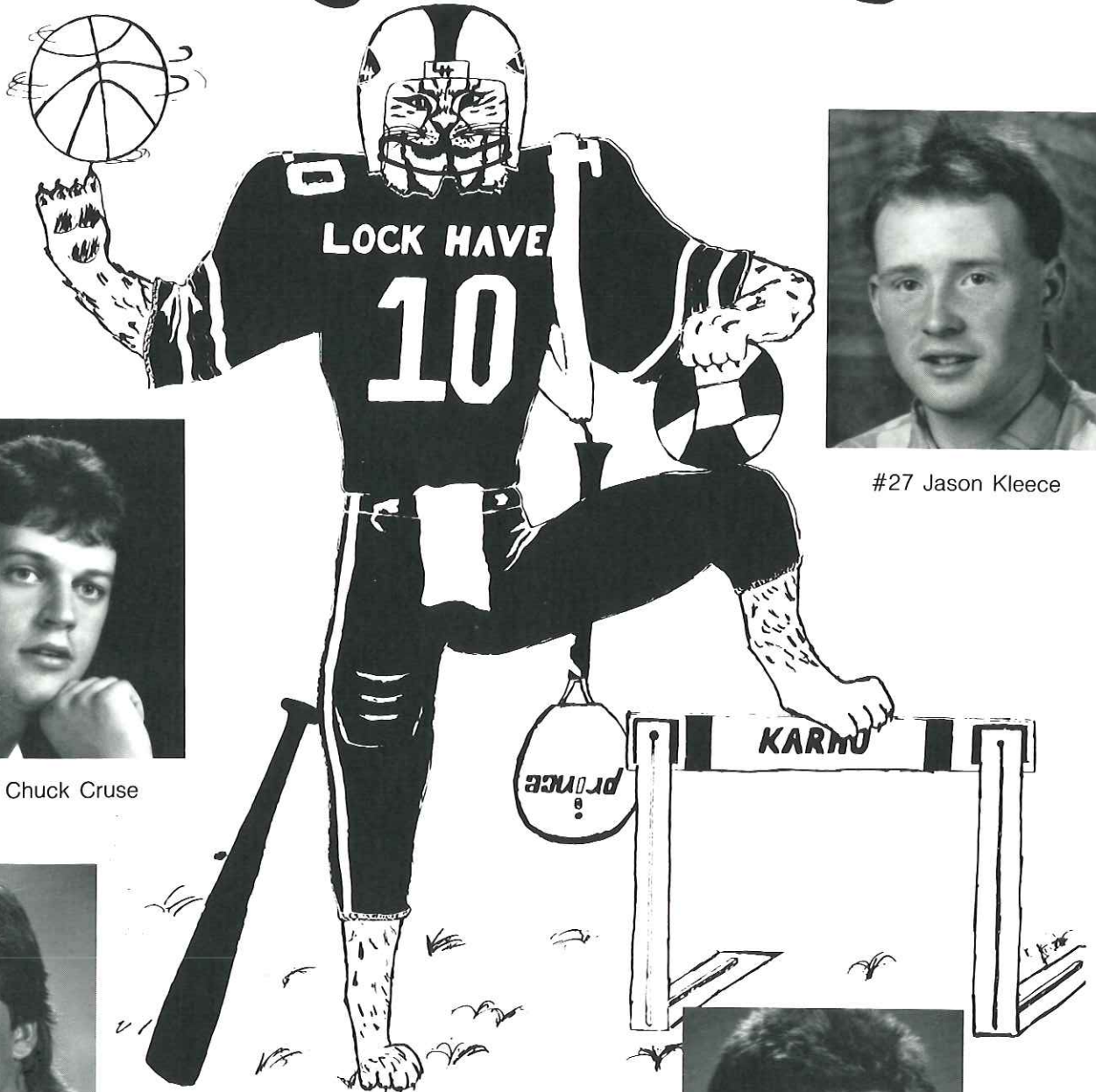


**King
Printing**

1305 W. College Ave., State College, PA 16801
(814) 238-2536

• OFFSET PRINTING • QUICK PRINTING • XEROX COPIES

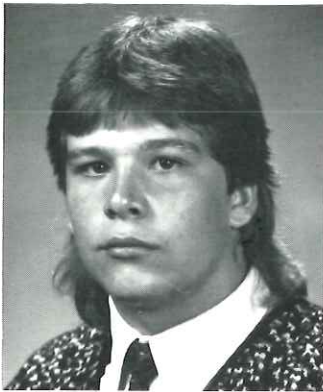
Lock Haven Bobcat Booster Club



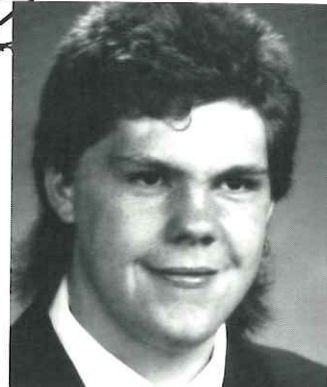
#87 Chuck Cruse



#27 Jason Kleece



#77 Chris Wilt

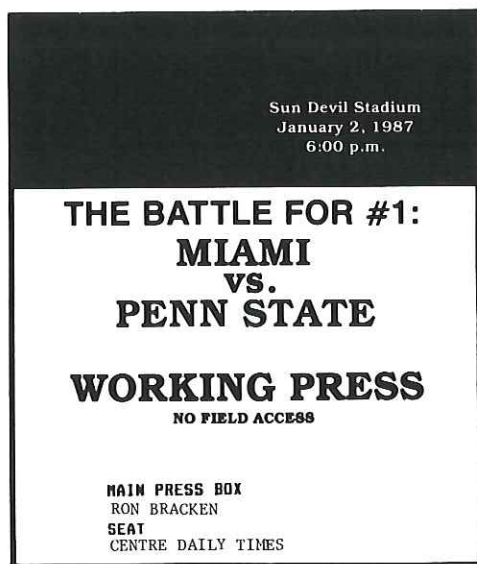


#91 Bud Yost

**GOOD LUCK
BOBCATS
AND
NORTH SQUAD**

We've got a TICKET TO WRITE

Our ticket to write is your ticket to lively and comprehensive sports coverage. Our award-winning sports writers bring you all the action. Whatever your sport, whatever the season, you can count on the Centre Daily Times for complete sports news and commentary.



CENTRE DAILY TIMES

For complete coverage of today's game, pick up a copy of the Centre Daily Times at any newsstand or convenience store. Or call, 814-237-3800 for home delivery.



GMCTRUCK®

JOEL

Pontiac - GMC

1101 N. Atherton, State College

237-1215

North Team Physician: Dr. Stanley Yoder

MID-STATE FOOTBALL CLASSIC NORTH SQUAD ROSTER

JERS NO.	FIRST NAME	LAST NAME	SCHOOL	HEIGHT	WEIGHT	OFF	DEF
1	Ken	Holden	Philipsburg-Osceola	5' 4"	130	E	DB
3	Troy	Lenhart	Clearfield	6' 0"	180	RB	OLB
9	Fred	Johnson	Penns Valley	6' 1"	205	RB	LB
10	Tim	Walker	Bald Eagle Nittany	5' 11"	170	RB	S
11	Tut	Bailey	Philipsburg-Osceola	5' 11"	185	QB	S
12	David	Jones	Bald Eagle Area	6' 0"	205	QB	LB
14	Jason	Clark	DuBois	6' 5"	180	QB	
15	Bruce	Graham	Clearfield	5' 11"	180	QB	S
16	Sean	London	Curwensville	5' 10"	180		LB
20	Steve	Putt	Clearfield Area	5' 11"	210	FB	T
21	Mike	Weaver	Bellefonte	5' 11"	180	TE	SS
22	Dave	Martin	State College	5' 6"	135	SE	DB
23	Fred	Ironside	Penns Valley	5' 8"	155	RB	DB
24	Matt	Henry	Lewistown	6' 0"	170	FL	OLB
25	Rich	Rogers	Bellefonte	5' 10"	165	RB	
27	Jason	Kleece	Lock Haven	5' 8"	160	RB	DB
34	Randy	Peachey	Indian Valley	6' 0"	180	FB	LB
44	Chad	Fisher	Bald Eagle Area	6' 0"	205	FB	LB
45	Tim	Schnarrs	Philipsburg-Osceola	6' 0"	215	FB	LB
47	Todd	Hardy	Bellefonte	6' 2"	215	FB	LB
50	Duffy	Besch	Bellefonte	6' 1"	200	C	DE
52	Jeff	Donoughe	Bellefonte	6' 1"	200	T	T-E
55	Bart	Cahir	State College	6' 1"	215	C/T	T
60	Ryan	Wilson	Clearfield	6' 1"	196	EE	
62	Travis	LaVelle	Bald Eagle Nittany	6' 2"	255		DE
71	Todd	Peters	Bald Eagle Area	6' 3"	215	G	DL
72	Rob	Steward	Philipsburg-Osceola	6' 0"	180	G	NG
74	Brian	Potts	West Branch	6' 4"	255	T	T
75	Todd	Renninger	Bald Eagle Area	6' 1"	200	T	T
76	Dave	Magnuson	Clearfield	6' 3"	240	T	T
77	Chris	Wilt	Lock Haven	6' 3"	235	T	T
78	Mike	Stone	Philipsburg-Osceola	6' 0"	225	T	T
87	Chuck	Cruse	Lock Haven	6' 3"	220	TE	E
89	Nate	Searer	Lewistown	6' 2"	205	FB	LB
91	Bud	Yost	Lock Haven	6' 6"	261	TE	DL

Sponsored by: Mid-State Bank

Co-sponsored by: The Centre Daily Times, Uni-Marts, Inc., Joel Confer Pontiac-Toyota-BMW-GMC, Lake Chevy-Olds-Geo-Lincoln-Mercury-Saab, Bradford Coal Company, Philip H. Sieg

CONFER



Toyota - BMW

120 E. Clinton St., State College

237-5713



South Team Physician: Dr. Vincent Morgan

MID-STATE FOOTBALL CLASSIC SOUTH SQUAD ROSTER

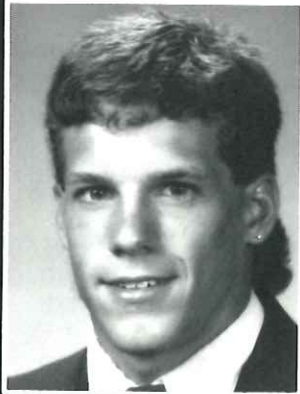
JERS NO.	FIRST NAME	LAST NAME	SCHOOL	HEIGHT	WEIGHT	OFF	DEF
1	Jonathan	Shields	Southern Huntingdon	5' 10"	165	QB/TB	DB
2	Dan	Casillo	Bishop Guilfoyle	6' 2"	183	WR/QB/RB	DB
9	Leverne	House	Mount Union	5' 9"	155	TB	DB
10	Lew	Tress	Mount Union	5' 11"	160	E	DB
11	Erik	Klingner	Hollidaysburg	5' 9"	145	WR	DB
12	Mike	Coulter	Bellwood-Antis	5' 10"	175	WR	DB
19	TJ	Keith	Altoona	5' 11"	170	QB	
20	Matt	Baker	Williamsburg	5' 10"	160	WR	DB
21	Mike	Mock	Central	5' 10"	165	RB	DB
22	Dave	Wyland	Hollidaysburg	6' 2"	185	RB	DB
23	Louie	Lang	Williamsburg	5' 11"	195	QB	
24	Joel	Musselman	Central	5' 9"	165	RB	LB
25	Shawn	Ivie	Juniata Valley	6' 0"	170	RB	DB
30	Tim	Beals	Tyrone	5' 9"	150		DB
34	T. Jay	Hileman	Altoona	5' 9"	165	WR	DB
38	Eric	Hufford	Central	5' 10"	170	WR	DB
41	Brad	Snyder	Bellwood-Antis	6' 0"	190	TE	LB
44	Kurt	Border	Huntingdon	5' 11"	185	RB	LB
51	Steve	Mock	Williamsburg	5' 10"	185	G	
52	Jason	Weaver	Hollidaysburg	5' 11"	195	G	LB
54	John	Colton	Moshannon Valley	5' 11"	215	C	DL
58	Scott	Harrington	Hollidaysburg	6' 4"	215	C	DE
62	John	Garner	Huntingdon	6' 2"	210	G	DE
63	Jeff	Parks	Southern Huntingdon	5' 10"	225	T	DL
64	Brian	Bettwy	Bellwood-Antis	5' 9"	160	G	DL
65	Kevin	Dodson	Central	5' 9"	210	G	DL
70	Doug	Claycomb	Claysburg-Kimmel	5' 10"	230	T	DL
72	Paul	Elder	Huntingdon	6' 5"	210	T	DL
73	Matt	Sankey	Altoona	6' 4"	260	C/T	DL
74	Darren	Stiffler	Hollidaysburg	6' 4"	260	T	DL
75	Pat	Steel	Mount Union	5' 7"	175	G	LB
76	Clinton	Gresh	Moshannon Valley	6' 4"	250	T	DL
77	John Paul	Wensel	Juniata Valley	6' 2"	220	T	DL
78	Jamie	Brumbaugh	Mount Union	6' 4"	265	T	DL
81	Shant	Aposhian	Bellwood-Antis	5' 10"	175	WR	DE

Crew of Officials: Referee - Jim Andrews, Head Linesman - Chris Rickens, Line Judge - Ron Rickens, Umpire - Mike Brown, Field Judge - Greg Hoover, Back Judge - Ted Beam

Hollidaysburg Area Golden Tigers Booster Club Congratulates



#11 Eric Klinger



#22 Dave Wyland



G
o
o
d

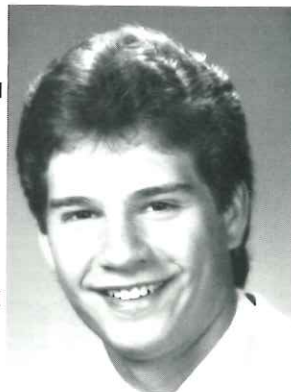
L
u
c
k

G
o
l
d
e
n

T
i
g
e
r
s

H
o
l
l
i
d
a
y
s
b
u
r
g

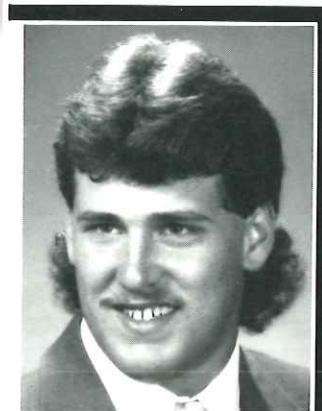
B
o
o
s
t
e
r
s



#52 Jason Weaver



#58 Scott Harrington



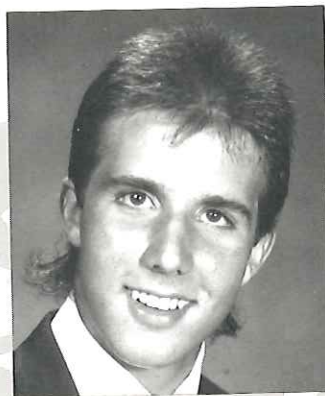
#74 Darren Stiffler



1989
Western Conference
AAAA Champions
District VI
AAAA Champions

DuBois Area Booster Club

Sends Best Wishes
For Success
To



#15 Jason J. Clark

**And The
North
Squad '90**

SOUTH SQUAD

School Division

Altoona
 Bellwood Antis
 Bishop Guilfoyle
 Central
 Claysburg-Kimmel
 Glendale
 Hollidaysburg
 Huntingdon
 Juniata Valley
 Southern Huntingdon
 Moshannon Valley
 Punxsutawney
 Tyrone
 Williamsburg



Alan Hartman
 Head Coach
 Mount Union



David Baker
 Williamsburg



William Clouse
 Juniata Valley



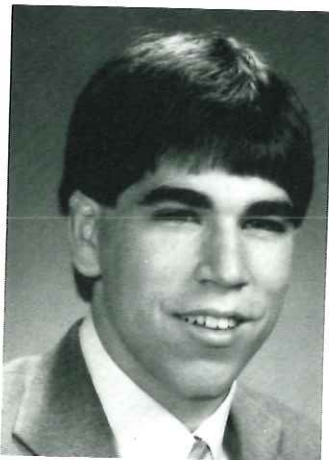
David Hummel
 Mount Union



Rick Wilson
 Mount Union



John Garritano
 Bellwood-Antis, Trainer



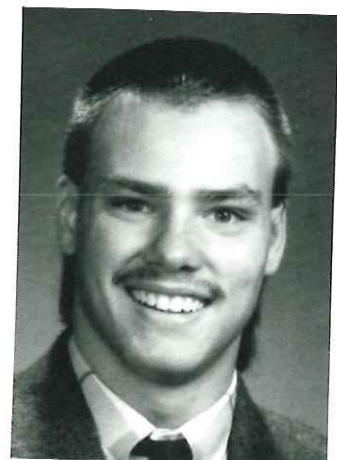
Shant Aposhian
 Bellwood-Antis
 Del Grosso Foods,
 Inc.



Matthew A. Baker
 Williamsburg
 A. Brady Appleman
 L.U.T.C.F./Prudential



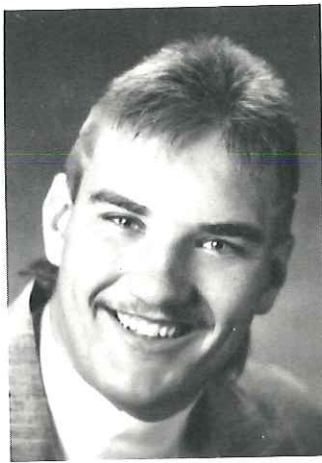
Tim Beals
 Tyrone
 P.P.G. Industries
 Blazing Arrow Hook
 & Ladder Co.



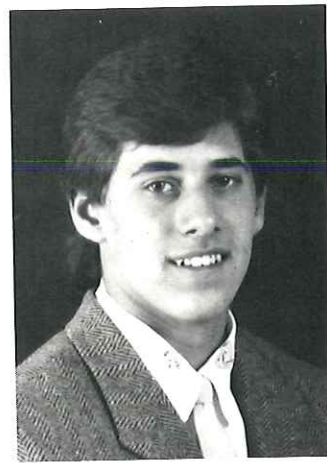
Brian Bettwy
 Bellwood-Antis
 Boyer Refrigeration
 Sales & Service



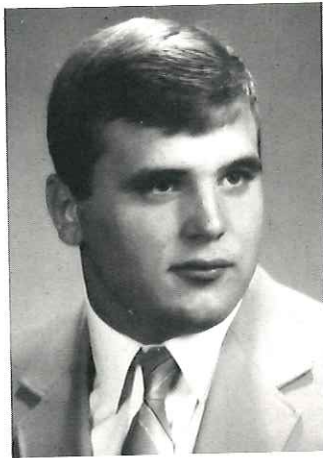
Kurt G. Border
Huntingdon
Garner Lmbr., Inc.



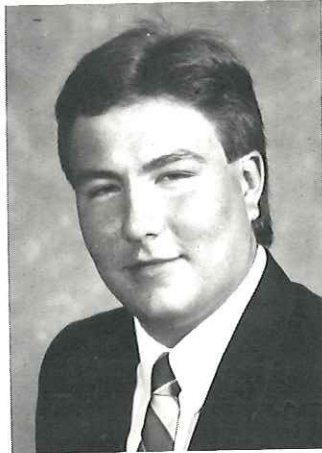
Jamie Brumbaugh
Mount Union
U.S. Silica Company
Moore's Used Cars &
Garage
Kountry Kitchen
Restaurant



Dan Casillo
Bishop Guilfoyle
Dean Patterson
Mazda



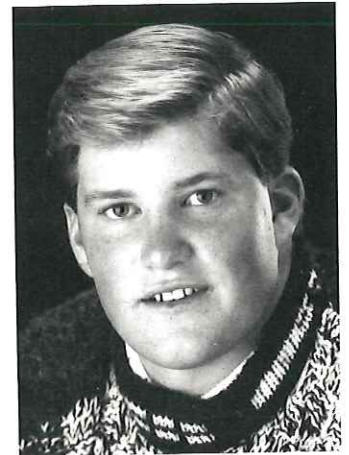
Doug Claycomb
Claysburg-Kimmel
John W. Yingling
Insurance Agency



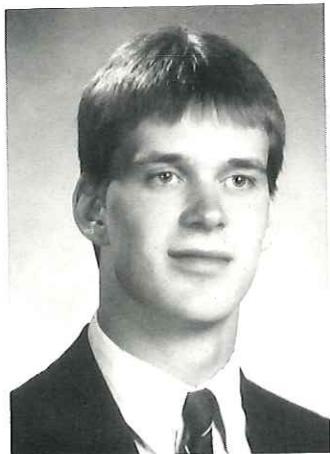
John Cotton
Moshannon Valley
Kitko Wood Products,
Inc.



Michael Coulter
Bellwood-Antis
Martin Oil Company



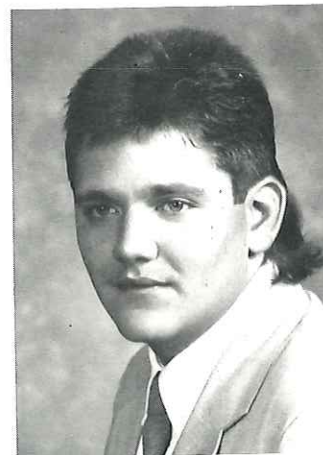
Kevin L. Dodson
Central
G. Mitchell Grace
Construction



Paul Elder
Huntingdon
J.C. Blair Memorial
Hospital



John M. Garner
Huntingdon
Penn Central National
Bank



Clinton Gresh
Moshannon Valley
Jacob George Ford
Sales, Inc.

CENTRAL PENNSYLVANIA FOOTBALL COACHES ASSOCIATION

A Short History And Update

On August 6, 1960, the Central Counties Conference All-Star game was played at Bellefonte. Forty-three players representing 14 schools participated. This first local All-Star game was sponsored entirely by Bellefonte Area businesses to raise money for the YMCA and the Community Betterment Fund.

In 1977 and again in 1978, the Lewistown Area Lions Club sponsored a regional All-Star game that involved Blair, Centre, Clinton, and Huntingdon county schools. Those were "great football games" but less than successful financially.

The Central Pennsylvania Football Coaches Association membership instituted the Mid-State Football Classic in 1985. This game was initiated to promote football, to recognize excellence in regional football performance, and to fund a program of scholarships and ongoing football education.

To date, \$18,000, in the form of 36 scholarships, has been awarded to help young people continue their educations. The CPFCA holds monthly mini-clinics for high school and youth league coaches. Players talk about playing in the Mid-State Football Classic as they prepare for their senior seasons. It would seem that our goals are being approached.

The degree to which the game and the CPFCA can continue working toward these goals will depend upon the support we continue to receive. Our gratitude is extended to our co-sponsors and business advertisers, to individual player sponsors and patrons, and to football fans. You make it all work!

CPFCA Officers

President: Tom Gibbony-Huntingdon

Vice President: Terry Styers
Lewistown

Secretary-Treasurer: Jack Bailey
Philipsburg-Osceola

Physical Exams

North: Dr. Stanley Yoder

Coaches Clinic

J. Gawen Stoker Terry Styers

Game Committees

Game Director: J. Gawen Stoker
Bald Eagle Area

Game Site: John Franco
Altoona

Game Manager: Barry Abbott
DuBois Athletic Director

Scholarship Committee Chairmen:

North: Mike Flickinger

South: Tom Gibboney

South: Dr. Vincent Morgan

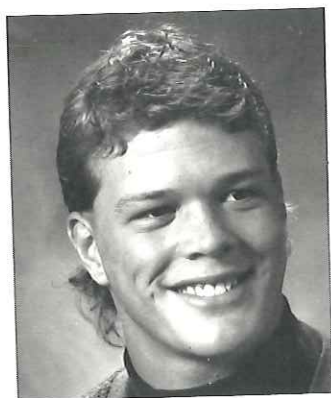
Ron Myers John Cryder

MT. UNION HIGH CHEERLEADERS for THE SOUTH SQUAD



Front row left to right - Alison Knable, Staci Smith, Traci Laird, **Back** - Dee Gergel, Shani Yetter, Heidi Todaro, Dawn Harman, **Absent from photo** - Courtney Secret. **Thanks for your help:** Tonya DeVecchis, Candace McNitt and Andrea Prough

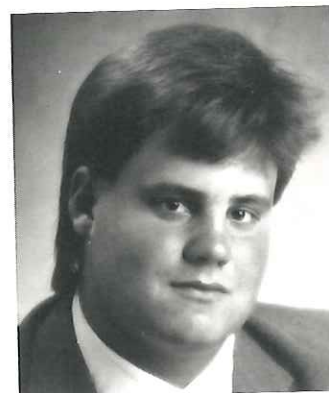
Best Of Luck TO THE Mountain Lions



#34 T.J. Hileman



#19 T.J. Keith



#73 Matt Sankey

AND THE MID-STATE CLASSIC

FROM THE
BIG

A

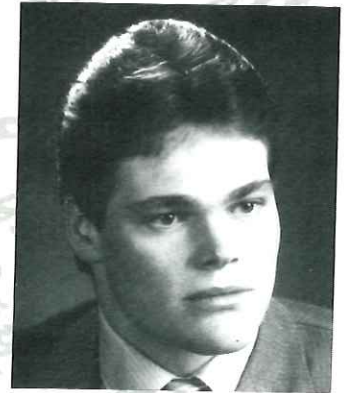
BOOSTER
CLUB

HUNTINGDON HIGH FOOTBALL BOOSTER CLUB WISHES GOOD LUCK TO

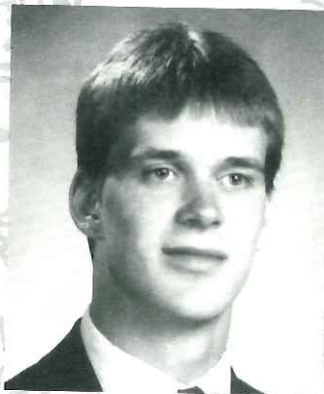


#44 Kurt Border

**Bearcat
All-Stars**



#62 John Garner

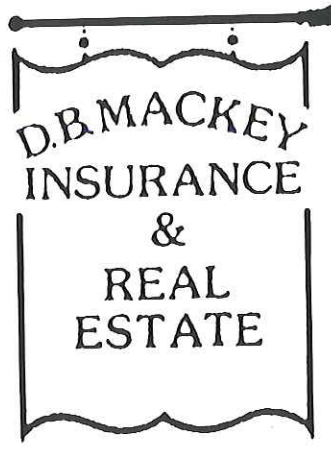


#72 Paul Elder

**Congratulations to
Coach George Weaver
on his selection to
The Pennsylvania Scholastic
Football Coaches Hall of Fame**

Patron Sponsors

Gary and Sheila Potts
Jack and Carla Bailey
Bill and Kerry Sankey
Mr. and Mrs. William D. Lang
Dr. and Mrs. Robert E. Steward,
Jr. and Family
Chelsea and Sean Sullivan



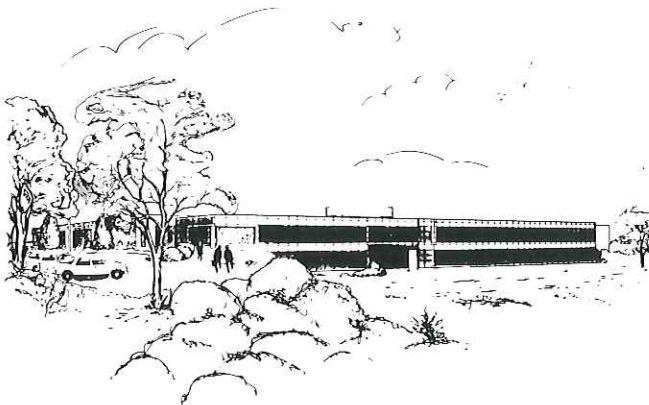
Good
Luck
To
South All
Stars

“GO BLUE”

620 S. Cambria St.
Bellwood, PA

814-742-8765

814-742-9036



Compliments of

 **SUPELCO**
SEPARATIONS TECHNOLOGIES GROUP
DIVISION OF ROHM AND HAAS
SUPELCO, INC. • Supelco Park • Bellefonte, PA 16823-0048

LEWISTOWN
PANTHER CLUB

GOOD LUCK

MATT HENRY

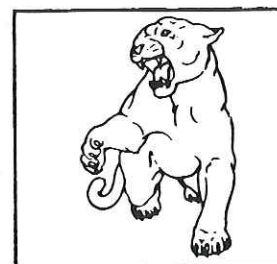
NATE SEARER

&

BEST WISHES

IN YOUR COLLEGE

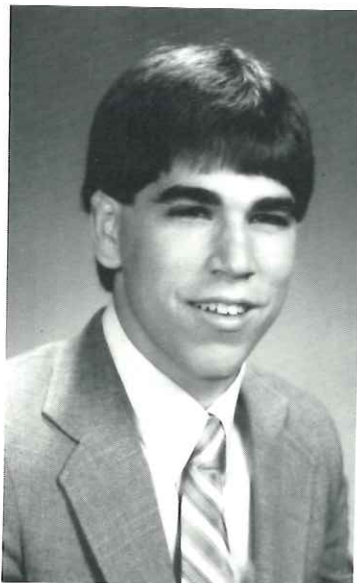
PURSUITS



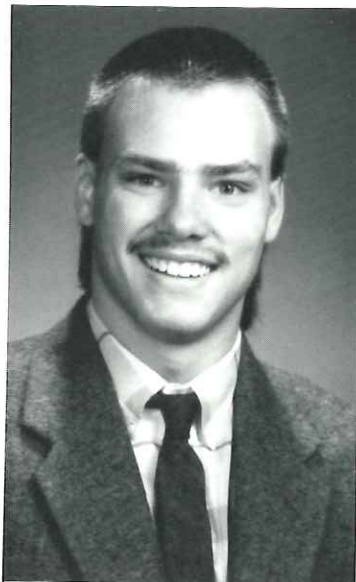
BELLWOOD-ANTIS QUARTERBACK CLUB

Salutes

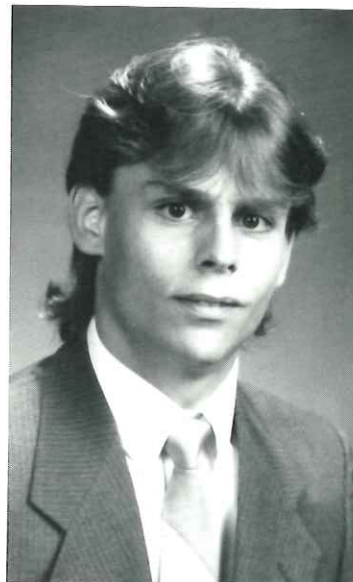
THE REPRESENTATIVES FROM BELLWOOD-ANTIS HIGH SCHOOL



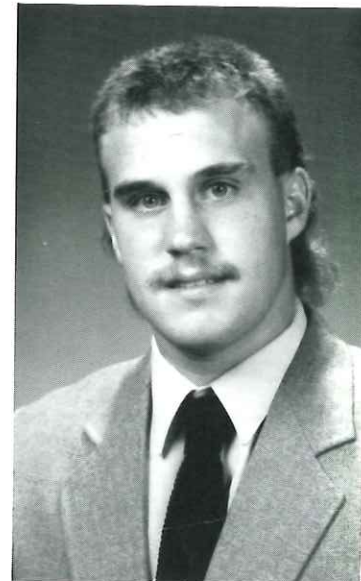
SHANT APOSHIAN
#81



BRIAN BETTWY
#64



MIKE COULTER
#12



BRAD SNYDER
#41



BLUE DEVILS COACHING STAFF
HEAD COACH JOHN HAYES
ASSISTANTS JIM TORSSELL
GENE YINGLING
CHET DILLEN
BILL CROWELL

BEST OF LUCK TO THE SOUTH SQUAD

Championship SPORTS COVERAGE

7 days a week
in the

Altoona Mirror



JIM LANE
Sports Editor



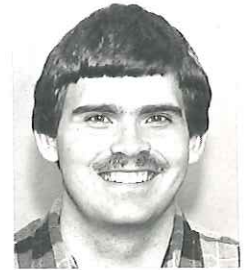
NEIL RUDEL
Associate Sports Editor



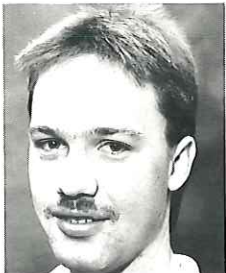
FRANK POLITO
Sports Writer



BOB KASUN
Sports Writer



JOHN HARTSOCK
Sports Writer



MIKE EMERY
Sports Writer



PAUL SINGER
Chief Photographer



DAVE LOVE
Photographer



JOHN CAVRICH
Photographer



GARY BARANEC
Photographer

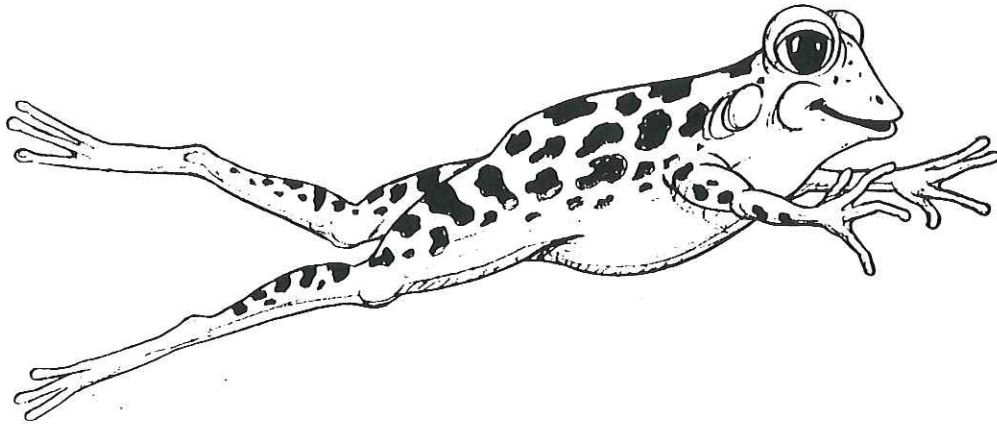
Best Of Luck To Both Teams

**The Clearfield Bison
Quarterback Club
and
The Red & Black Club
Sends Best Wishes to
The North Squad
and**



Players: Dave Magnuson, Steve Putt, Bruce Graham, Troy Lenhart and Ryan Wilson
and
Coaches: Tim Janocko, Forrest Campman and Jerry Moore

Congratulations All-★ Players & Coaches!



Jumping into a Fundraiser?

Call LeapFrog™ Technologies for some winning ideas:

1-800-HI-FROGS (443-7647).

Or send the coupon below to:

LeapFrog™ Technologies
1408 Eleventh Avenue, Suite 2
Altoona, PA 16601

GO BLUE!



YES!

I'd like to know more about LeapFrog™'s winning fundraising products and ideas.

Your Name: _____

Company: _____

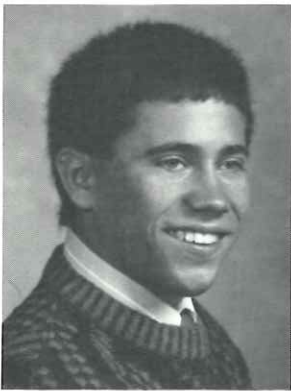
Address: _____

City/State/Zip: _____

Phone: () _____

WE'RE MOUNTIE PROUD OF

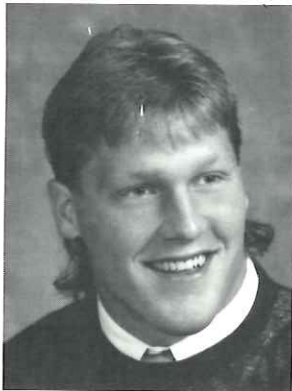
**Wishing Continued Success
To The
Mid-State Classic
And
Good Luck
To The '90 Mounties**



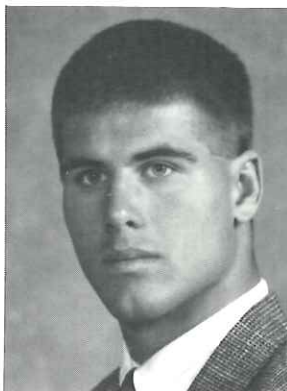
#1 Ken Holden



#11 Tut Bailey



#45 Tim Schnarrs



#72 Rob Steward



#78 Mike Stone

COMPLIMENTS OF
PHILIPSBURG-
OSCEOLA
QUARTERBACK
CLUB
AND MOM'S CLUB



Best Wishes

to Athletes and Coaches

from the

Clearfield County/Moshannon Valley Area

who are participating in the

Mid-State Football Classic



Bradford Coal Co., Inc.

Bigler, PA 16825

THE GAME

THE TRADITION

THE HONORED

*The 33rd Anniversary
of the*



Football Classic



Tony Dorsett

1990 Honorary Chairman • 33rd Anniversary

1973 Big 33 Alumnus

Pitt • Dallas Cowboys • Denver Broncos

Major Sponsor Professional Insurance Agents of PA, MD and DE



PENNSYLVANIA vs MARYLAND

**Hershey Stadium 7:30 p.m.
Saturday, July 28, 1990**

\$5 General Admission \$7 Reserved

Hersheypark Box Office 717- 534- 3911

Big 33 Office 717- 774- 3303